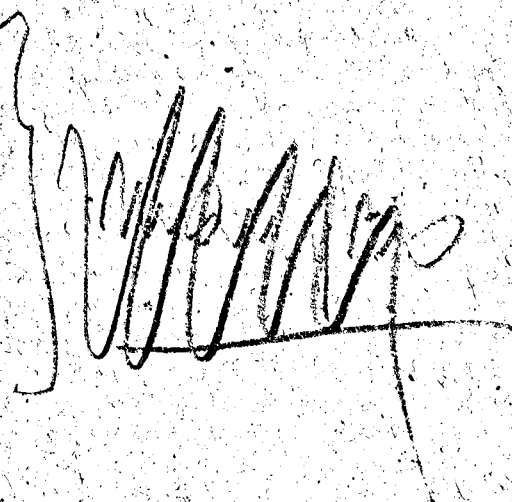


Teil KARTE (14)

- 1) 1
- 2) 2
- 3) ——— mian/ps
- 4) 4/1-2
- 5) 5/1-2
- 6) 6/1-2
- 7) 7/1
- 8) 7/2
- 9) 8/1
- 10) 8/2
- 11) 9/1
- 12) 9/2
- 13) 10/1-2
- 14) 10/3-4

(3) Karte minge



1

a

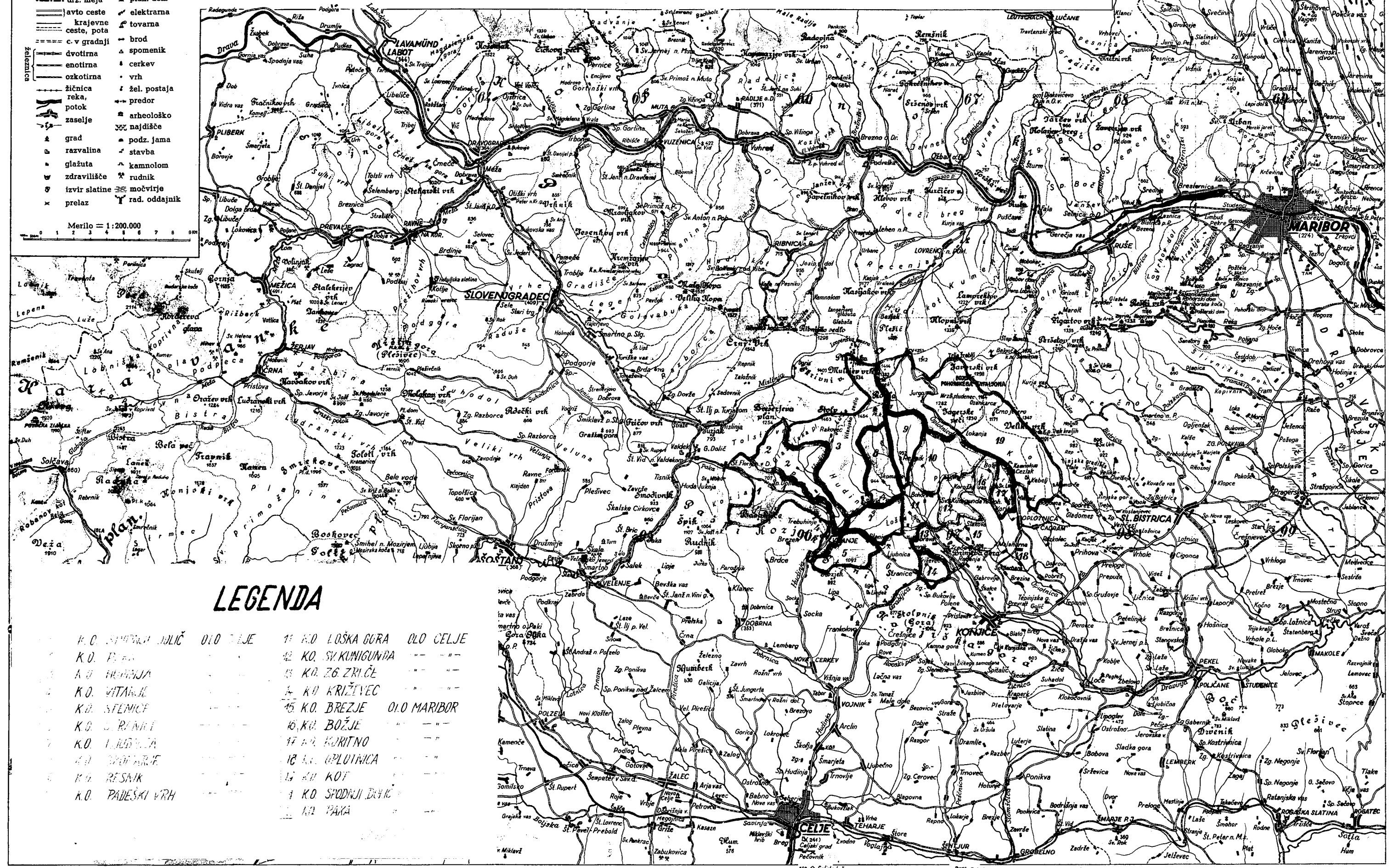
POHORJE

(DRAVSKA DOLINA, KOBANSKO, MISLINJSKA IN MEZIŠKA DOLINA)

Izdela: MILAN VERK, MARIBOR 1954 · Založila ZALOZBA OBZORJA · LITOGRAFIJA IN TISK: MARIBORSKA TISKARNA MARIBOR

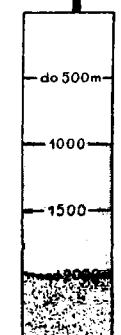
19° 30' VZHDNO OD GREENWICH

- LEGENDA**
- državna meja
 - avto ceste
 - krajevne ceste, pota
 - c. v gradnji
 - dvotirna železnica
 - enotirna železnica
 - ozkotirna železnica
 - reka
 - potok
 - zaselje
 - grad
 - razvalina
 - glazuta
 - završilisce
 - izviri slatine
 - prelaz
 - plan. dom
 - elektrarna
 - tovarna
 - brod
 - spomenik
 - cerkev
 - vrh
 - žel. postaja
 - predor
 - arheološko najdišče
 - podz. jama
 - stavba
 - kamnolom
 - rudnik
 - močvirje
 - rad. oddajnik
- Merilo = 1:200.000



LEGENDA

- 1. K.O. SLOVENJ GRAD
- 2. K.O. P. ...
- 3. K.O. ...
- 4. K.O. VITANJE
- 5. K.O. SLEMICE
- 6. K.O. ...
- 7. K.O. ...
- 8. K.O. ...
- 9. K.O. ...
- 10. K.O. ...
- 11. K.O. ...
- 12. K.O. ...
- 13. K.O. ...
- 14. K.O. ...
- 15. K.O. ...
- 16. K.O. ...
- 17. K.O. ...
- 18. K.O. ...
- 19. K.O. ...
- 20. K.O. ...
- 21. K.O. ...
- 22. K.O. ...
- 23. K.O. ...
- 24. K.O. ...
- 25. K.O. ...
- 26. K.O. ...
- 27. K.O. ...
- 28. K.O. ...
- 29. K.O. ...
- 30. K.O. ...
- 31. K.O. ...
- 32. K.O. ...
- 33. K.O. ...
- 34. K.O. ...
- 35. K.O. ...
- 36. K.O. ...
- 37. K.O. ...
- 38. K.O. ...
- 39. K.O. ...
- 40. K.O. ...
- 41. K.O. ...
- 42. K.O. ...
- 43. K.O. ...
- 44. K.O. ...
- 45. K.O. ...
- 46. K.O. ...
- 47. K.O. ...
- 48. K.O. ...
- 49. K.O. ...
- 50. K.O. ...
- 51. K.O. ...
- 52. K.O. ...
- 53. K.O. ...
- 54. K.O. ...
- 55. K.O. ...
- 56. K.O. ...
- 57. K.O. ...
- 58. K.O. ...
- 59. K.O. ...
- 60. K.O. ...
- 61. K.O. ...
- 62. K.O. ...
- 63. K.O. ...
- 64. K.O. ...
- 65. K.O. ...
- 66. K.O. ...
- 67. K.O. ...
- 68. K.O. ...
- 69. K.O. ...
- 70. K.O. ...
- 71. K.O. ...
- 72. K.O. ...
- 73. K.O. ...
- 74. K.O. ...
- 75. K.O. ...
- 76. K.O. ...
- 77. K.O. ...
- 78. K.O. ...
- 79. K.O. ...
- 80. K.O. ...
- 81. K.O. ...
- 82. K.O. ...
- 83. K.O. ...
- 84. K.O. ...
- 85. K.O. ...
- 86. K.O. ...
- 87. K.O. ...
- 88. K.O. ...
- 89. K.O. ...
- 90. K.O. ...
- 91. K.O. ...
- 92. K.O. ...
- 93. K.O. ...
- 94. K.O. ...
- 95. K.O. ...
- 96. K.O. ...
- 97. K.O. ...
- 98. K.O. ...
- 99. K.O. ...
- 100. K.O. ...



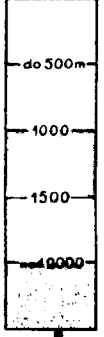
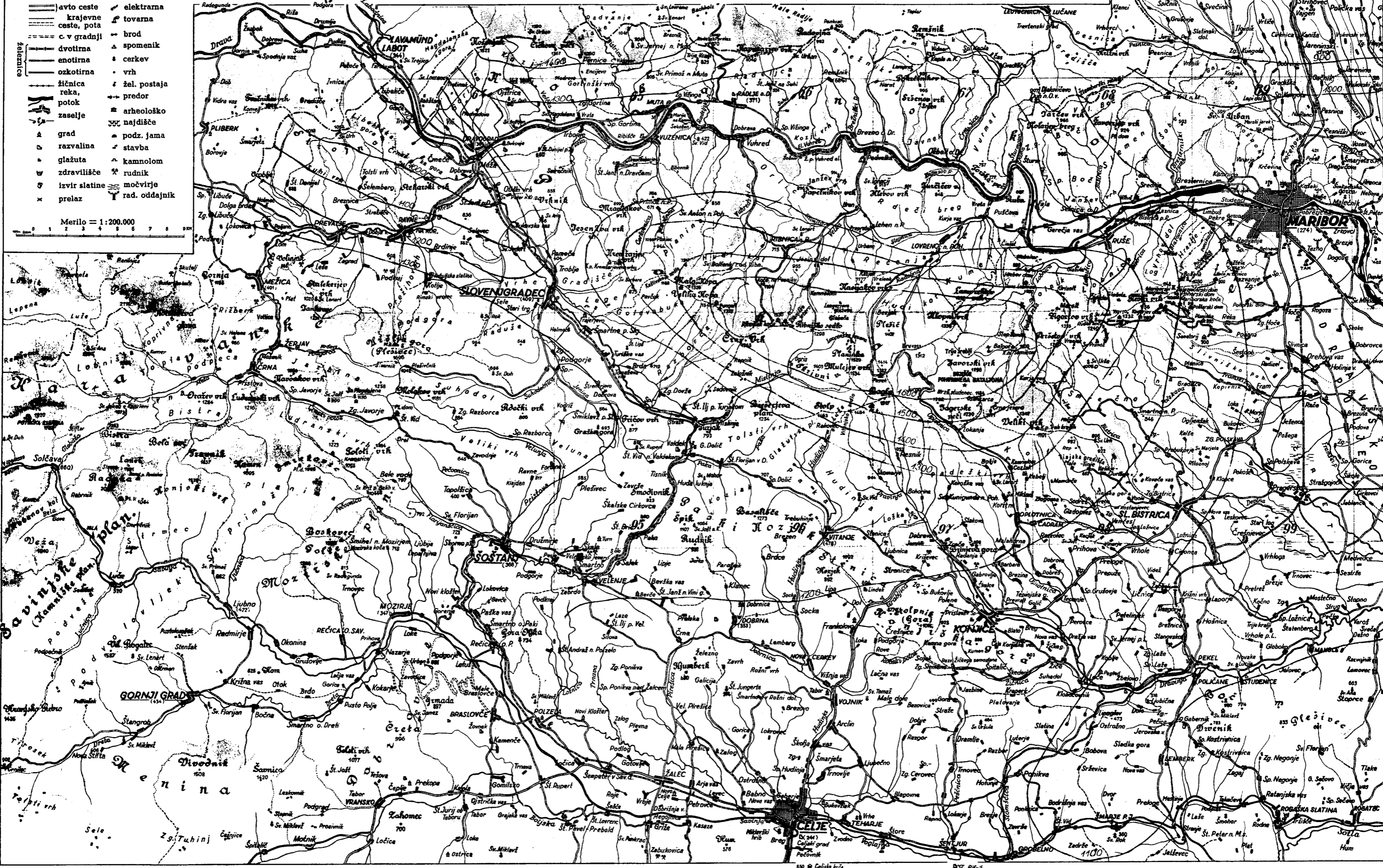
POHORJE

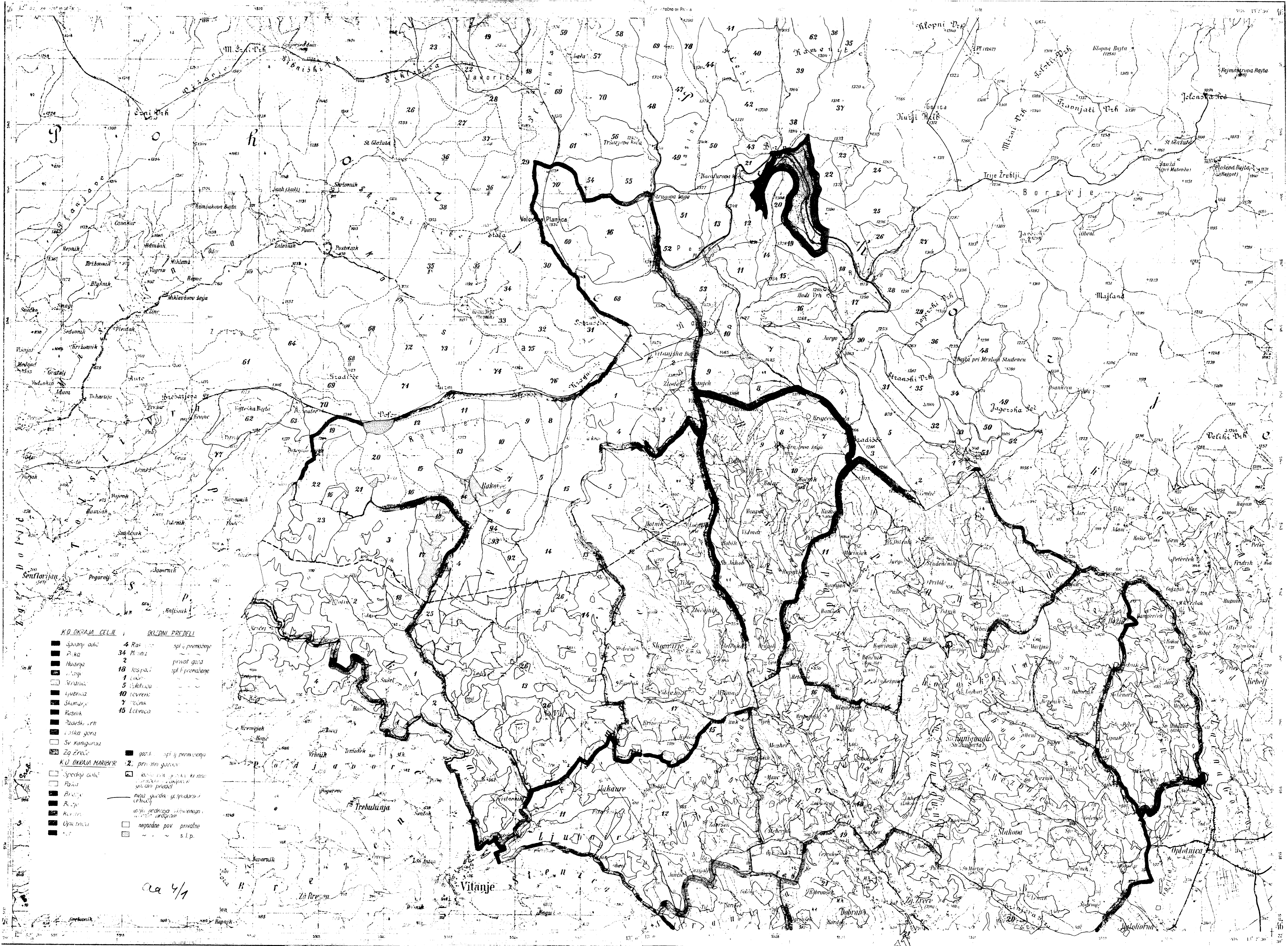
(DRAVSKA DOLINA, KOBANSKO, MISLINJSKA IN MEZIŠKA DOLINA)

Izdalal: MILAN VERK, MARIBOR 1954 · Založila ZALOZBA OBZORJA · LITOGRAFIJA IN TISK: MARIBORSKA TISKARNA MARIBOR

- dr. meja
- avto ceste
- krajevne ceste, pota
- c. v gradnji
- dvotirna
- enotirna
- ozkotirna
- žičnica
- reka
- potok
- zaselje
- grad
- razvalina
- glažuta
- zdravilišče
- izvir slatine
- prelaz
- plan. dom
- elektrama
- tovarna
- brod
- spomenik
- cerkev
- vrh
- žel. postaja
- predor
- arheološko najdišče
- podz. jama
- stavba
- kamnolom
- rudnik
- močvirje
- rad. oddajnik

Merilo = 1:200.000

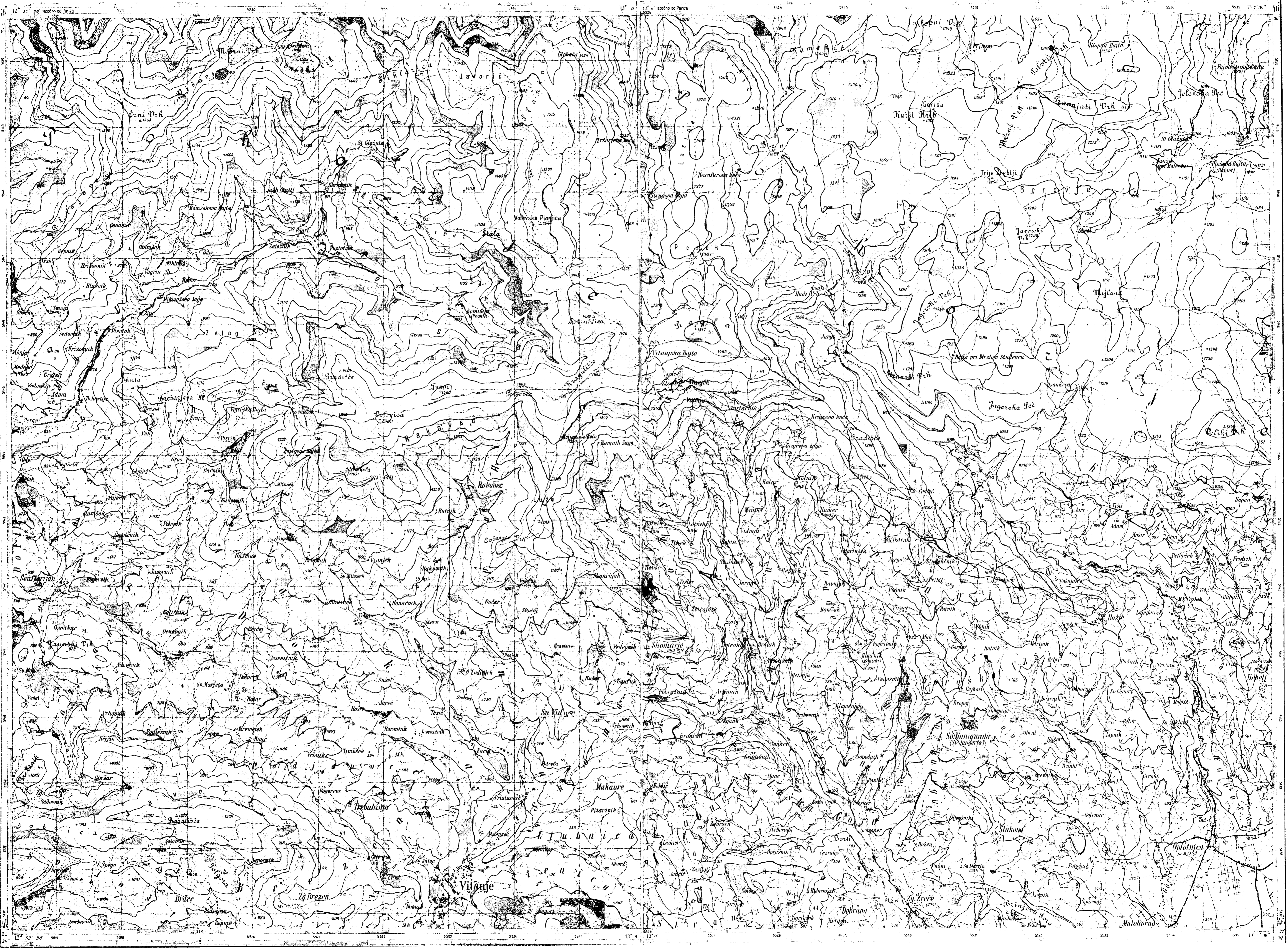


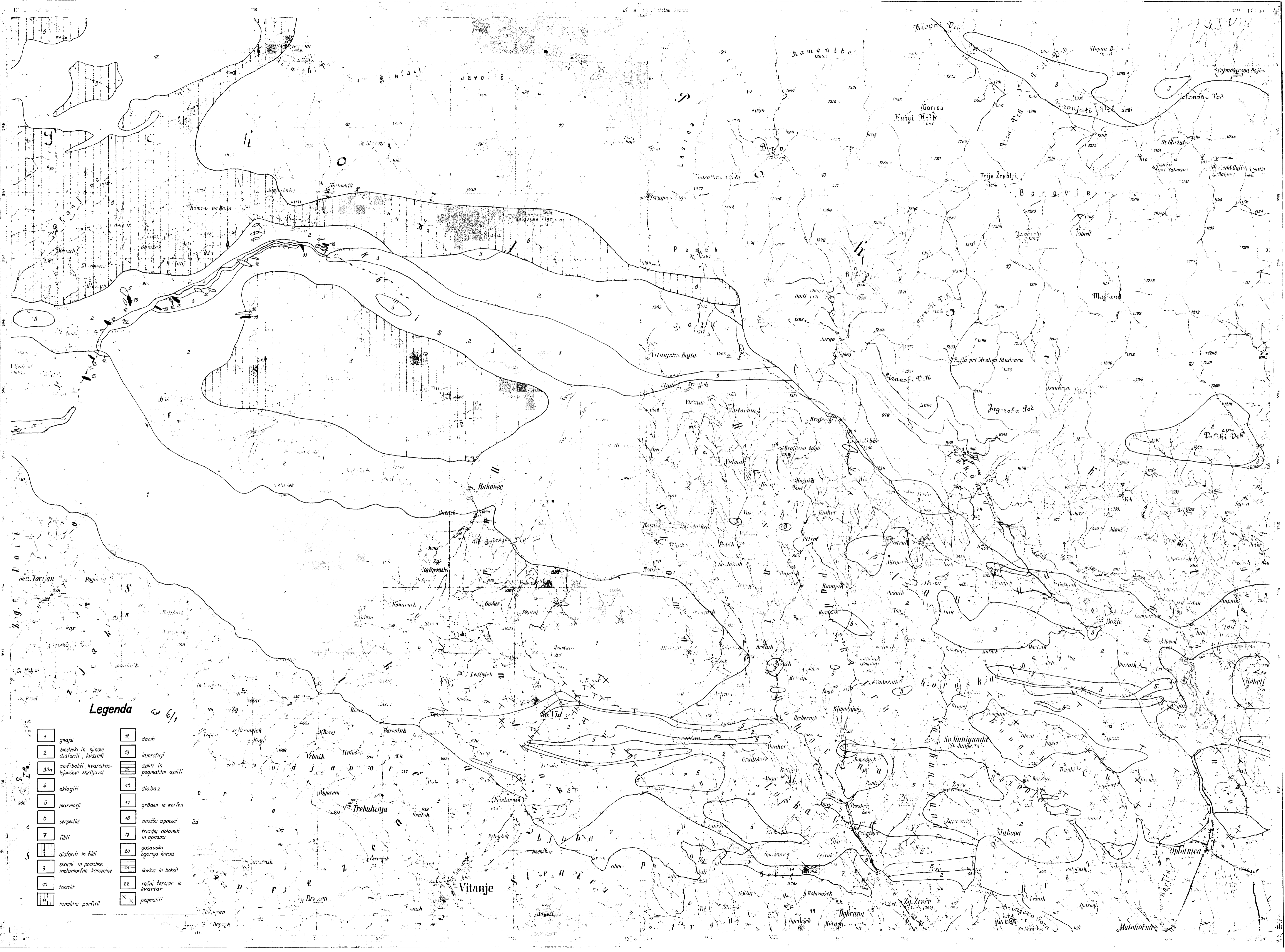


- K.O. OKRAJA CELJE**
- Spodnji ožič
 - P. ka
 - Hladna
 - Stranica
 - Ljubina
 - Šumarji
 - Resnik
 - Ploščki vrh
 - Jaska gora
 - Sv. Kungurca
 - Zg. Zrce
- BOVDNI PREDELI**
- 4 Rai
 - 34 Mala
 - 2
 - 18 lesnati
 - 1
 - 5 voharica
 - 10 tovrski
 - 7 točnik
 - 15 letnica

- K.O. OKRAJA MARIBOR**
- Spodnji ožič
 - P. ka
 - Br. je
 - R. je
 - K. je
 - Opatovci
- BOVDNI PREDELI**
- 902.1
 - 2. prijetni gozdovi
 - 102.1
 - 102.2
 - 102.3
 - 102.4
 - 102.5
 - 102.6
 - 102.7
 - 102.8
 - 102.9
 - 102.10
 - 102.11
 - 102.12
 - 102.13
 - 102.14
 - 102.15
 - 102.16
 - 102.17
 - 102.18
 - 102.19
 - 102.20
 - 102.21
 - 102.22
 - 102.23
 - 102.24
 - 102.25
 - 102.26
 - 102.27
 - 102.28
 - 102.29
 - 102.30
 - 102.31
 - 102.32
 - 102.33
 - 102.34
 - 102.35
 - 102.36
 - 102.37
 - 102.38
 - 102.39
 - 102.40
 - 102.41
 - 102.42
 - 102.43
 - 102.44
 - 102.45
 - 102.46
 - 102.47
 - 102.48
 - 102.49
 - 102.50
 - 102.51
 - 102.52
 - 102.53
 - 102.54
 - 102.55
 - 102.56
 - 102.57
 - 102.58
 - 102.59
 - 102.60
 - 102.61
 - 102.62
 - 102.63
 - 102.64
 - 102.65
 - 102.66
 - 102.67
 - 102.68
 - 102.69
 - 102.70
 - 102.71
 - 102.72
 - 102.73
 - 102.74
 - 102.75
 - 102.76
 - 102.77
 - 102.78
 - 102.79
 - 102.80
 - 102.81
 - 102.82
 - 102.83
 - 102.84
 - 102.85
 - 102.86
 - 102.87
 - 102.88
 - 102.89
 - 102.90
 - 102.91
 - 102.92
 - 102.93
 - 102.94
 - 102.95
 - 102.96
 - 102.97
 - 102.98
 - 102.99
 - 102.100

ca 4/1





Legenda

6/7

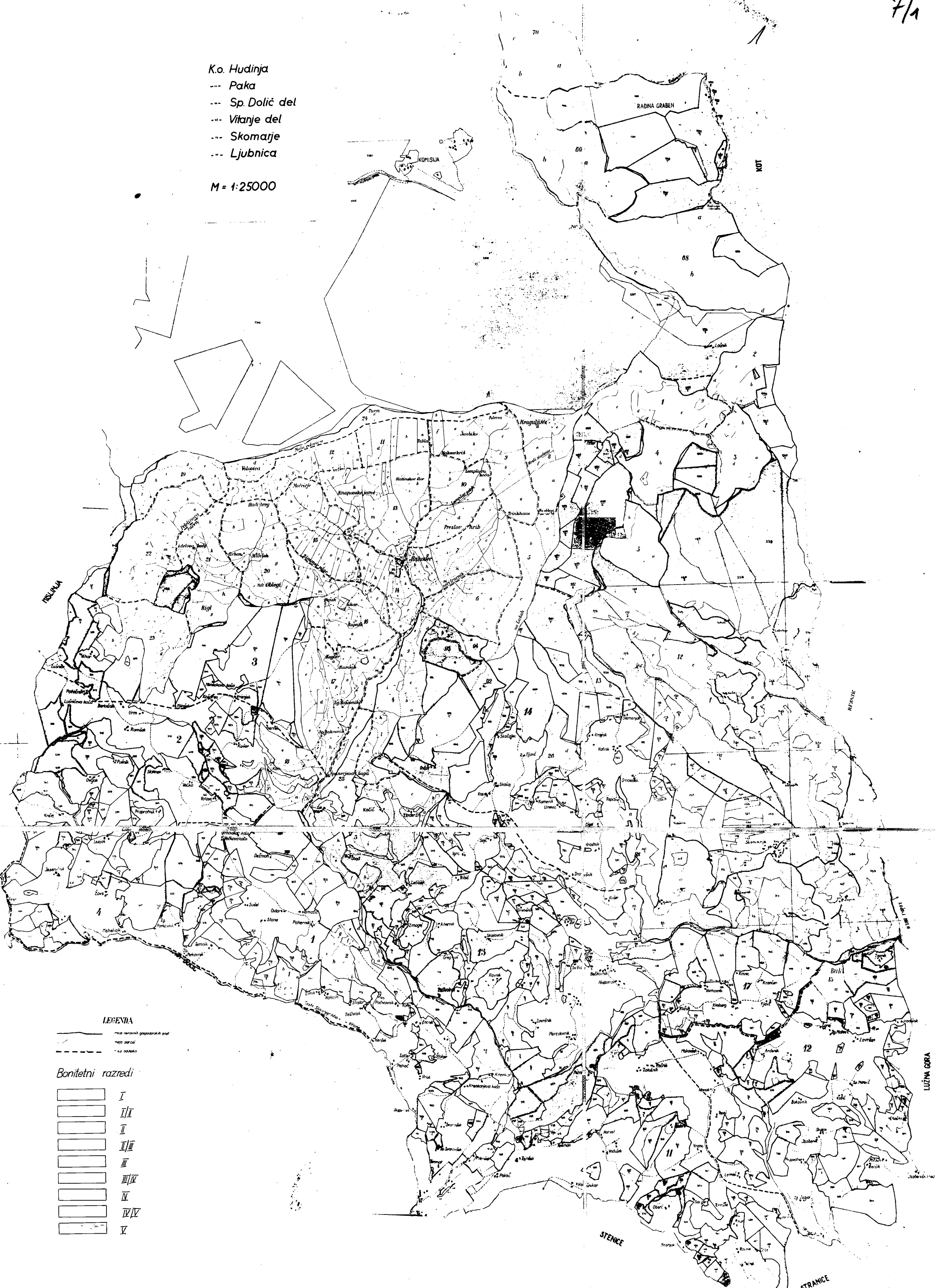
- | | |
|--|---------------------------------|
| 1 gnajsi | 12 dachi |
| 2 blestniki in njihovi diaforiti, kvarciti | 13 lamprofirji |
| 3a amfiboliti, kvarcito-lojevčevi skriljavci | 14 apeliti in pegmatiti apeliti |
| 4 eklogiti | 15 diabaz |
| 5 marmorji | 16 grōden in verfen |
| 6 serpentin | 17 onzični apnenici |
| 7 filiti | 18 triadni dolomiti in apnenici |
| 8 diaforiti in filiti | 19 gosavska zgornja kreča |
| 9 skarni in podobne metamorfne kamnine | 20 ilovica in boksit |
| 10 tonalit | 22 rečni terasir in kvartar |
| 11 tonaltni porfirni | X pegmatiti |

7/1



K.o. Hudinja
 --- Paka
 --- Sp. Dolič del
 --- Vitanje del
 --- Skomarje
 --- Ljubnica

M = 1:25000

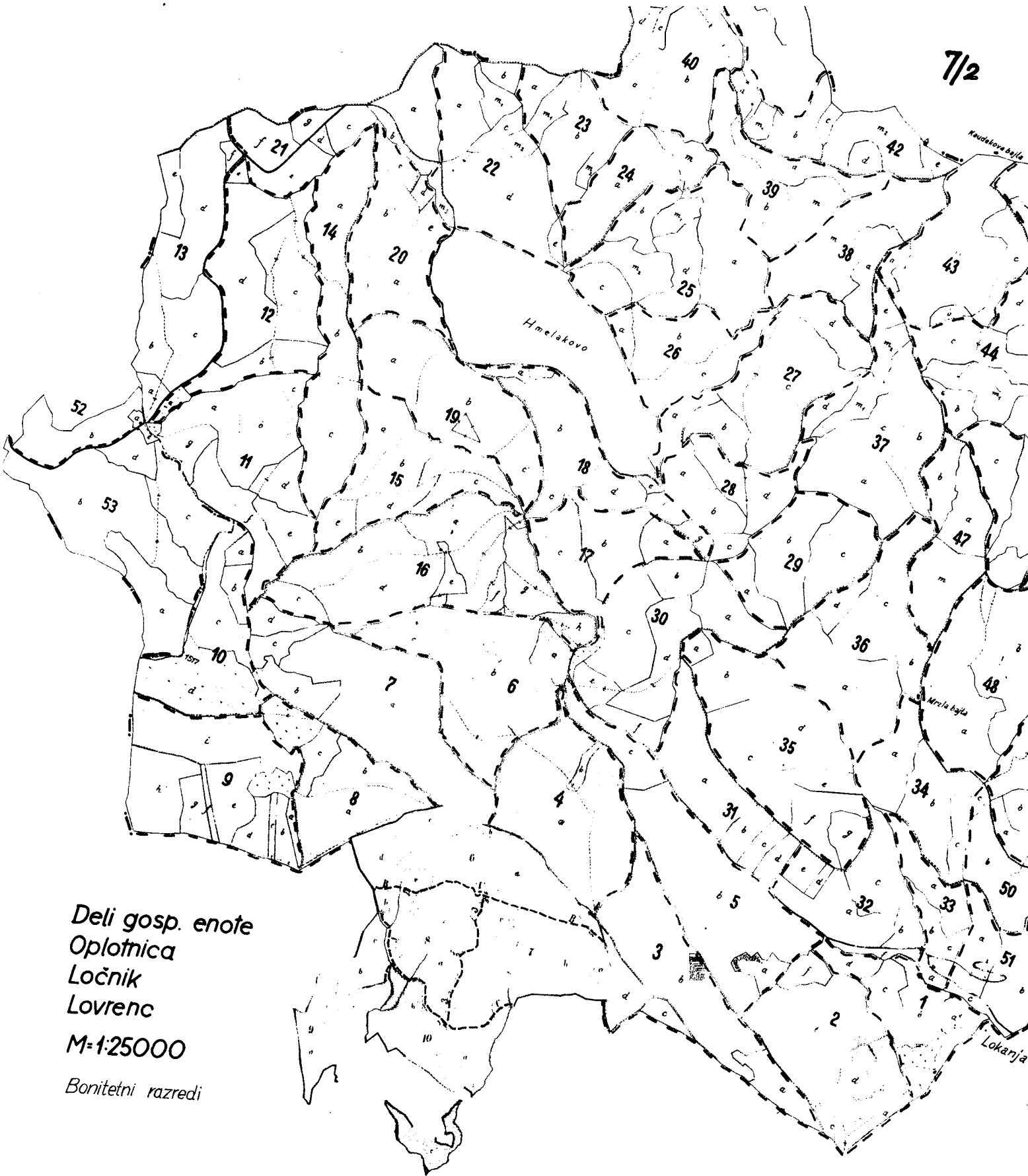


LEGENDA

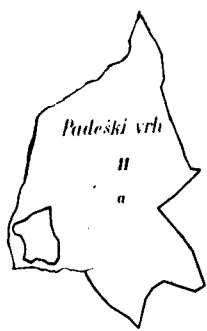
- meje katastrskih parcel in sosesk
- - - - - meje parcel
- - - - - meje soseske

Bonitetni razredi

- I
- II
- III
- IV
- V
- VI
- VII
- VIII
- IX
- X



Deli gosp. enote
 Oplotnica
 Ločnik
 Lovrenc
 M:1:25000
 Bonitetni razredi



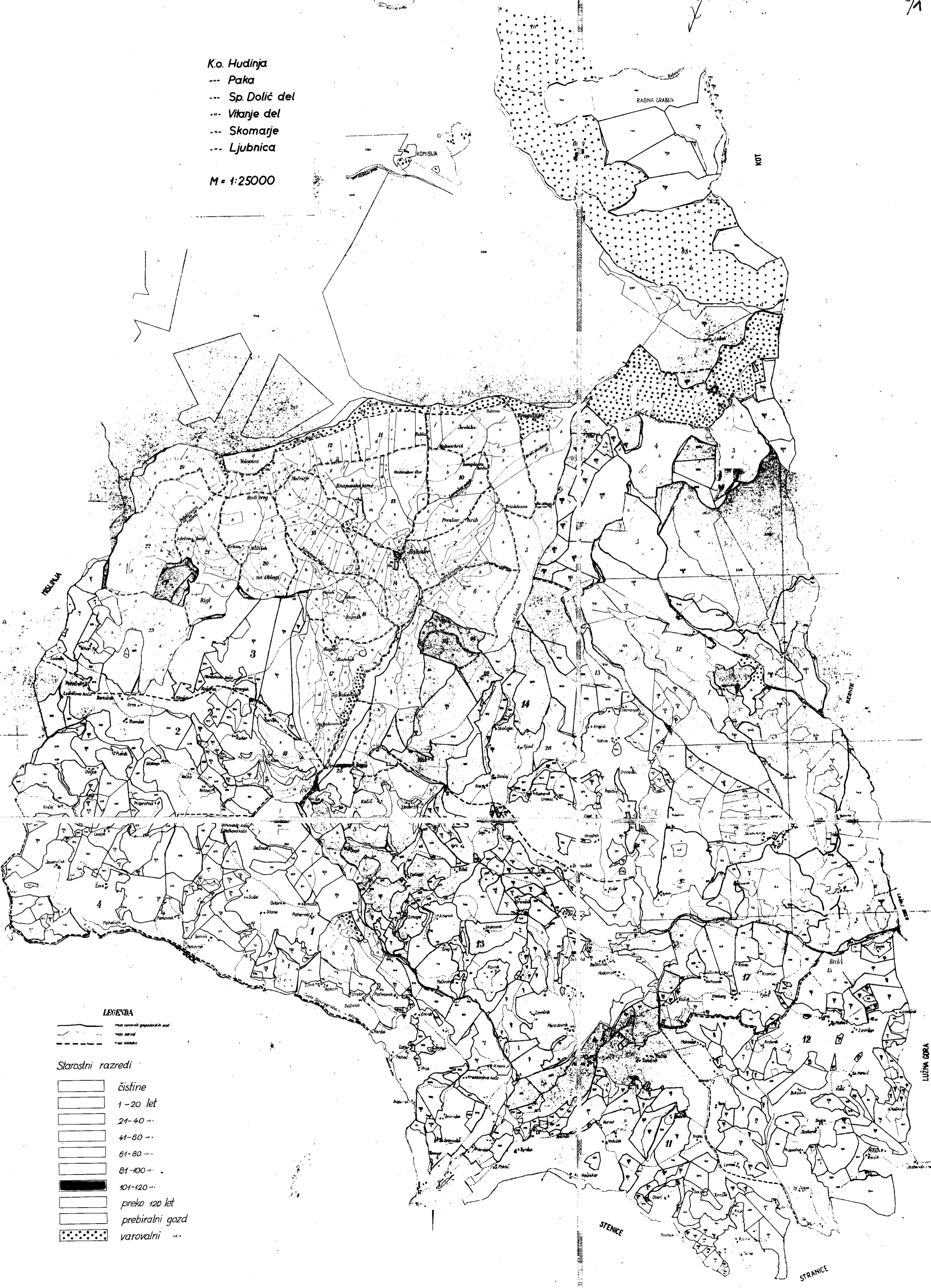
ca

Arguel

8/1

K.o. Hudinja
 --- Paka
 --- Sp. Dolič del
 --- Vitanje del
 --- Skomarje
 --- Ljubnica

M = 1:25000



LEGENDA

- meje občin in gospodarskih enot
- meje parcel
- meje oddelkov

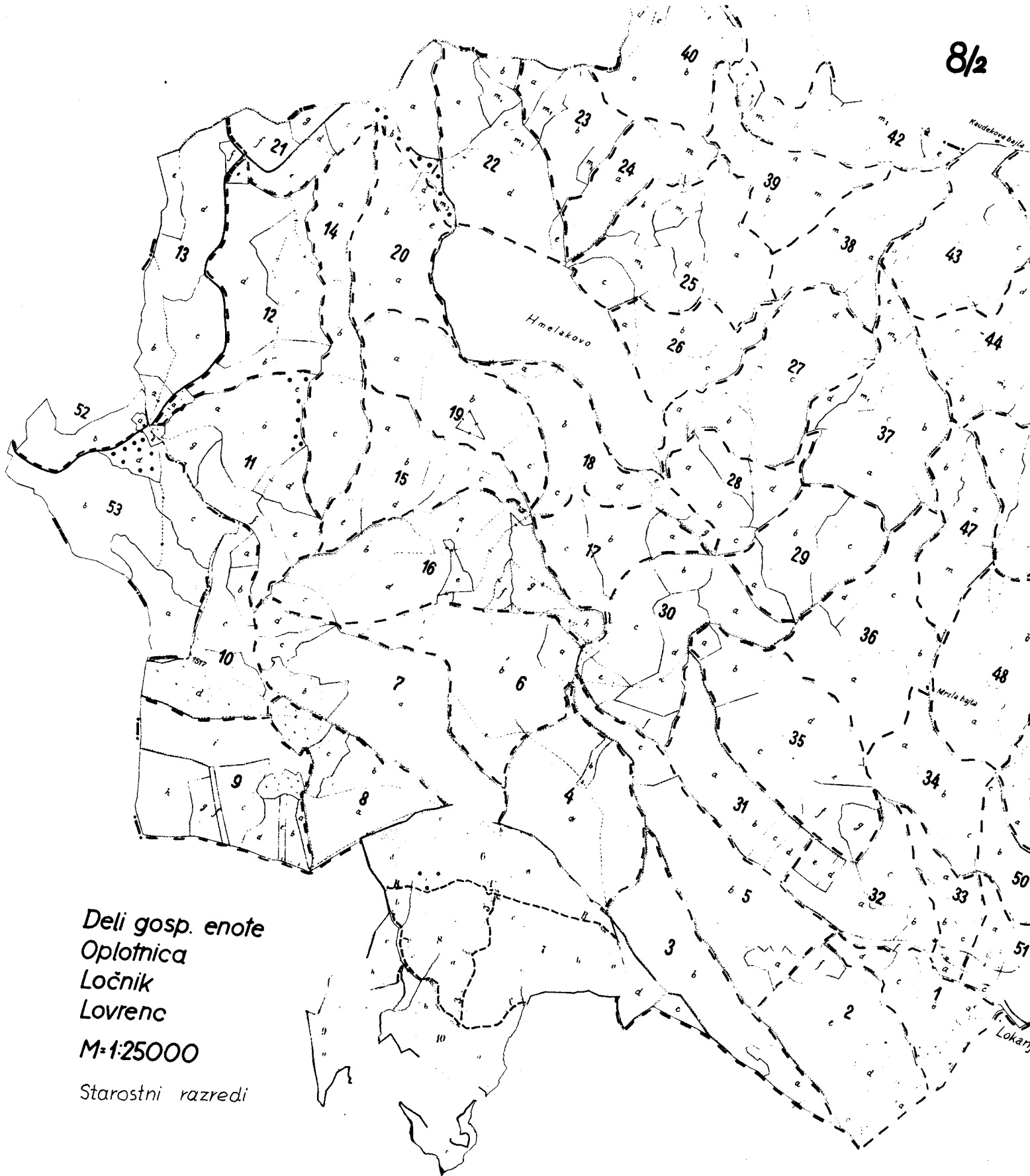
Starostni razredi

- čistine
- 1-20 let
- 21-40 "
- 41-60 "
- 61-80 "
- 81-100 "
- 101-120 "
- preko 120 let
- prebiralni gozd
- varovalni "

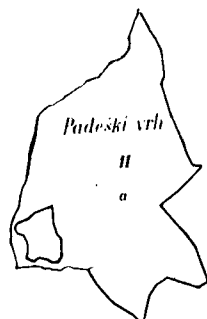
STENCE

STRANCE

LUZNA GORA

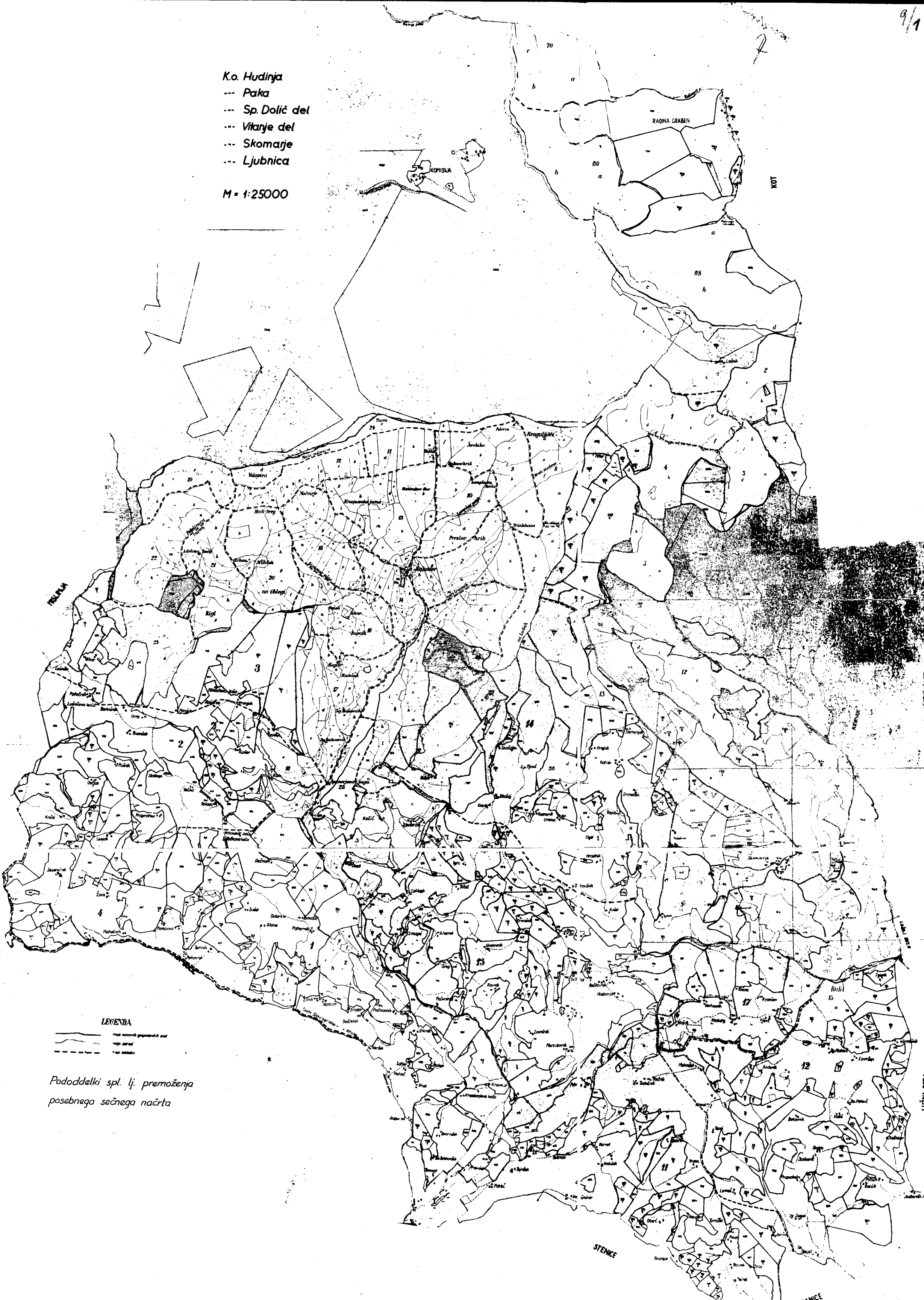


Deli gosp. enote
 Oplotnica
 Ločnik
 Lovrenc
 M:1:25000
 Starostni razredi



a

K.o. Hudinja
 --- Paka
 --- Sp. Dolič del
 --- Vitanje del
 --- Skomarje
 --- Ljubnica
 M = 1:25000



LEGENDA

- mapa osnovnih gospodarskih površin
- mapa parcel
- - - - - meja obkroga

Pododdelki spl. lj. premoženja
 posebnega sečnega načrta

STENCE

STRANCE

LUZNA GORA

TRAVNA

KOT

KOPISKA

RADINA GRABEN

7

70

Turn

Bigl

2

4

1

13

11

12

15

17

18

20

21

22

23

24

25

26

27

28

29

30

31

32

33

34

35

36

37

38

39

40

41

42

43

44

45

46

47

48

49

50

51

52

53

54

55

56

57

58

59

60

61

62

63

64

65

66

67

68

69

70

71

72

73

74

75

76

77

78

79

80

81

82

83

84

85

86

87

88

89

90

91

92

93

94

95

96

97

98

99

100

101

102

103

104

105

106

107

108

109

110

111

112

113

114

115

116

117

118

119

120

121

122

123

124

125

126

127

128

129

130

131

132

133

134

135

136

137

138

139

140

141

142

143

144

145

146

147

148

149

150

151

152

153

154

155

156

157

158

159

160

161

162

163

164

165

166

167

168

169

170

171

172

173

174

175

176

177

178

179

180

181

182

183

184

185

186

187

188

189

190

191

192

193

194

195

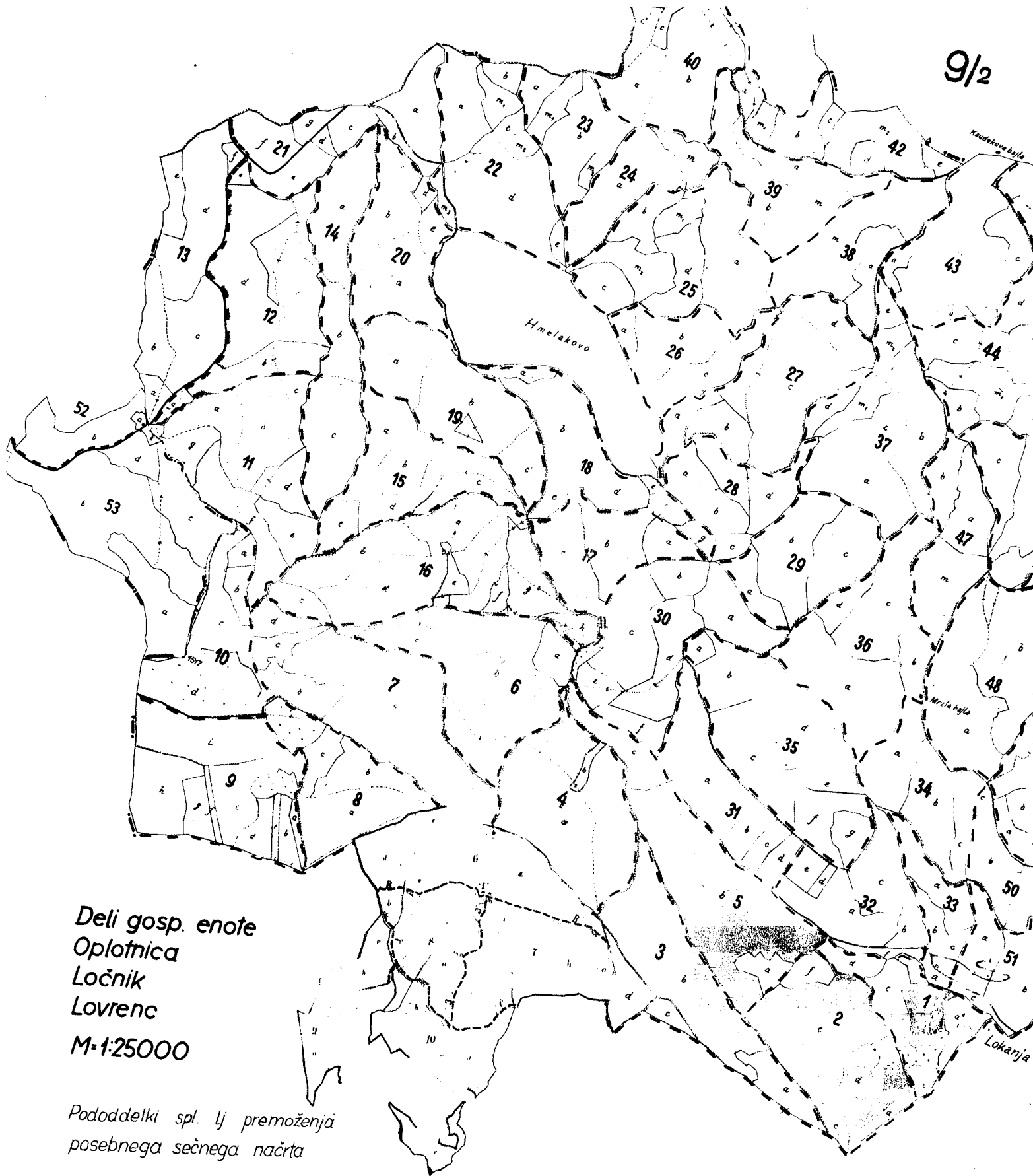
196

197

198

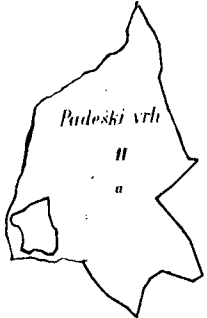
199

200



Deli gosp. enote
Oplotnica
Ločnik
Lovrenc
M=1:25000

Pododdelki spl. lj premoženja
posebnega sečnega načrta



a

