

CULINARY TRAIL



Website Content Management Guide

Tomaž Jakša, Anže Štepec, dr. Nika Brili

Rudolfovo - Science and Technology Centre Novo mesto, Slovenia

May 2026

Project title: Culinary Route of Ethnic and Local Cuisine in the Danube Region

Duration: 1.1.2024 - 1.7.2026

Project acronym: Culinary Trail

Project coordinator: School of Advanced Social Studies, Slovenia

Partners: 19 consortium partners

Type of project: Development and research project

Short description of the project:


The project focuses on the ethnic and local cultural heritage of the Danube region and promotes economic opportunities in rural areas. It will revitalise tourism, promote local development, create employment and foster innovation. The key activities of the project are the collection, digitisation and protection of the culinary heritage of 30 ethnic groups, the development of a transnational route, a strategy for the protection of culinary heritage and the establishment of a joint demonstration and training centre. It will contribute significantly to the implementation of the European Strategy for the Danube Region and strengthen the capacities of the 250 participating organisations.

Welcome

This documentation explains how to create, manage, review, and explore Culinary Trail content, including heritage units, restaurants, trails, the Digital Catalogue, and interactive maps.

 Ask a question...

Welcome to the Culinary Trail Documentation

 Estimated time: 10 minutes.

Welcome to the official documentation for the **Culinary Trail platform**. This documentation explains how registered users, contributors, and visitors can use the platform to create, manage, browse, and explore culinary heritage content from the Danube Region.

The guides are organized by the main sections of the platform and provide step-by-step instructions for working with Units of Culinary Heritage, restaurants, trails, the Digital Catalogue, and the Transnational Trails maps.

What You Can Find in This Documentation

Managing Units of Culinary Heritage

Learn how registered users can create and manage Units of Culinary Heritage through their account dashboard. This guide explains how to add a new unit, complete the submission form, use the Overview, Food, Beverage, Technique, Tradition, and Media tabs, and understand the approval process before publication.

Managing Restaurants

Learn how users can add, view, edit, and delete restaurants connected to the Culinary Trail platform. This section explains the restaurant submission form, the approval process, and how published restaurants appear on the Transnational Trails map.

Managing Trails

Learn how users can create and manage trails by selecting restaurants as trail stops. This guide explains how to add a new trail, complete the trail creation form, select trail types, add restaurant stops, and view published trails on the platform.

Using the Digital Catalogue

Learn how visitors can browse published Units of Culinary Heritage in the Digital Catalogue. This section explains how to search, filter, and open individual unit detail pages, as well as how logged-in users can leave ratings and comments.

Using the Transnational Trails Pages

Learn how users can explore culinary heritage entries, partner restaurants, published trails, and EuroVelo cycling routes on interactive maps. This guide explains the difference between the Transnational Trails map and the Trails Map page, including how to filter map content and open detail pages.

Review and Publication Process

Content submitted by users is not published immediately. New Units of Culinary Heritage, restaurants, and trails are first saved with the status **Pending**.

A Content Manager reviews the submitted content. Once approved, the status changes to **Published**, and the content becomes visible on the public areas of the platform, such as the Digital Catalogue, restaurant pages, trail pages, or interactive maps.

Who This Documentation Is For

This documentation is intended for:

- Registered users contributing culinary heritage content
 - Project partners managing local or regional entries
 - Content Managers reviewing submitted content
 - Visitors who want to understand how to browse the Digital Catalogue and Transnational Trails maps
-

Getting Started

To begin contributing content, create an account or sign in to the Culinary Trail platform. After logging in, open **My Account** to access your dashboard. From there, you can manage your Culinary Units, Restaurants, Trails, and account details.

For browsing published content, visitors can use the **Digital Catalogue** and **Transnational Trails** sections without creating new entries.



Units of Culinary Heritage

Learn how to create and manage new Units of Culinary Heritage.



Restaurants

Learn how to create and manage new Restaurants.



Trails

Learn how to create and manager new Culinary Trails.

Getting Started

Digital Catalogue


This page explains how users can browse, search, filter, and view published Units of Culinary Heritage in the Digital Catalogue.



Digital Catalogue
Culinary Trail



Using the Digital Catalogue

 **Estimated time: 5 minutes.**

The **Digital Catalogue** allows visitors to browse published Units of Culinary Heritage from the Danube Region. It presents culinary heritage items in a visual grid and provides filtering options to help users quickly find specific dishes, beverages, techniques, traditions, or other submitted units.

Unlike the account dashboard sections, the Digital Catalogue is intended for viewing and exploring published content. Users do not create, edit, or delete units from this page.

Digital Catalogue

A collection of units of unique culinary heritage from the Danube Region

Dear visitor, become part of the Culinary Trail story! We invite you to co-create the Digital Catalogue by sharing your culinary heritage. Click "Add New Unit" to contribute.



Roma Serbia

**Ciganski kadaif –
Roma-style Kadaif
Tart**

Vujadin Vujadinovic



Roma Serbia

**Ciganska pljeskavica –
Gipsy pljeskavica**

Vujadin Vujadinovic



Bunjevci Serbia

**Bunjevački kolač od
maka – Bunjevac
Poppy Seed Cake**

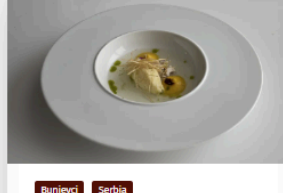
Vujadin Vujadinovic



Roma Serbia

**Pohovane crvene
paprike na kajmaku -
Breaded Red Peppers
with Kajmak**

Vujadin Vujadinovic



Bunjevci Serbia

**Bistra čorba sa griz
gnedlama – Bunjevac
Broth with Semolina
Dumplings**

Vujadin Vujadinovic



Roma Serbia

**Letnje sarmice od
kelja – Summer Kale
Rolls**

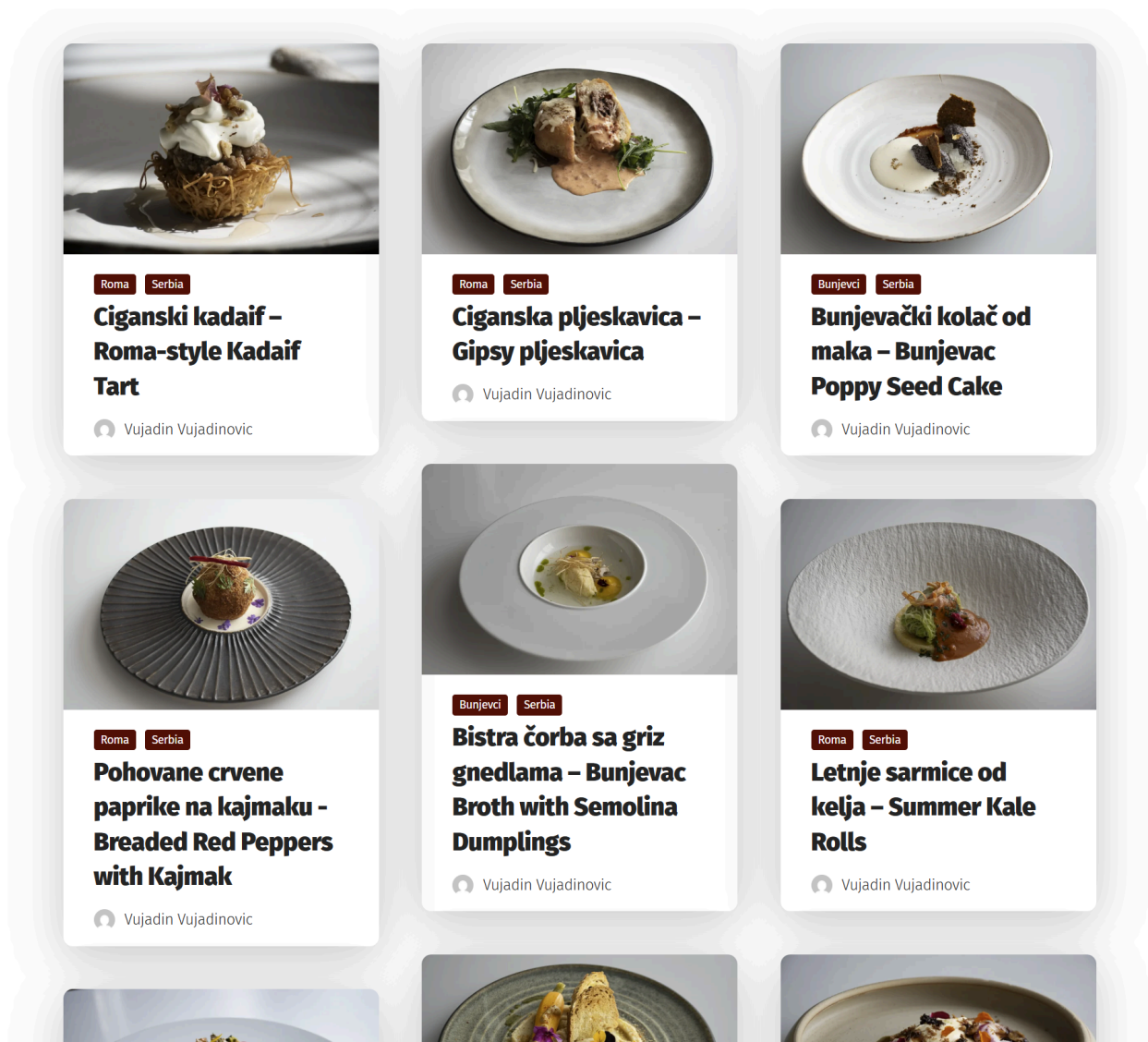
Vujadin Vujadinovic



Browsing the Catalogue

The catalogue displays published Units of Culinary Heritage as cards in a grid layout. Each card includes a featured image, basic classification labels, the title of the unit, and the name of the contributor.

Users can scroll through the catalogue to explore available culinary heritage entries.



Using the Search Bar

At the top of the catalogue, users can search for a specific unit by typing a keyword or title into the search bar.

As the user types, the catalogue automatically updates and displays matching results.

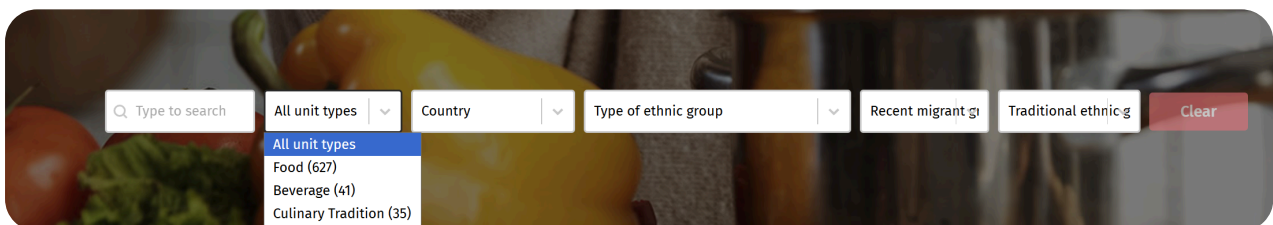
Filtering Catalogue Results

The Digital Catalogue includes dynamic filtering options. When a user selects an option from any dropdown field, the grid is automatically updated to show only the matching units.

Users can filter the catalogue by:

- **Unit Type**
- **Country**
- **Type of Ethnic Group**
- **Recent Migrant Group**
- **Traditional Ethnic Group**

Multiple filters can be combined to narrow the results further. For example, a user can filter by unit type, country, and ethnic group at the same time.



Clearing Filters

To reset the catalogue view, users can click the **Clear** button.

This removes all selected filter values and search terms, returning the catalogue to its default view with all available published units displayed.

Viewing Unit Details

Users can open a unit by clicking on its card in the catalogue grid.

This opens the unit details page, where users can view all available information about the selected Unit of Culinary Heritage. Depending on the unit type, the details page may include information such as the description, recipe, preparation process, location, ethnic group, project partner, references, images, and other relevant content.



Vanilice

Overview

Unit Type: Food	Country: Slovenia
Type of ethnic group: Traditional / Autochthonous ethnic groups	Traditional / Autochthonous ethnic groups: Serbs
Project Partner(s): PP 15 - RUDOLFOVO - Science and Technology Centre Novo mesto	

Food Details

Short description of the dish:

Vanilice are traditional Serbian bite-sized sandwich cookies, made with a buttery dough and filled with jam, then rolled in powdered sugar. They're a festive treat, often prepared during holidays.

Location (City): Novo mesto

Recipe:

Ingredients:

- 250g butter
- 100g powdered sugar
- 2 egg yolks
- 1 tsp vanilla extract
- 400g all-purpose flour

Leaving a Rating and Comment

On the unit details page, logged-in users can leave a rating and comment.

Users can select a star rating, write their message, and submit the comment. This allows visitors to share feedback or impressions about the selected unit.

Leave a Comment

Logged in as Tomaz Jakša. [Edit your profile.](#) [Log out?](#) Required fields are marked *

YOUR RATING

*

4 stars

Your Message

Save my name, email and website in this browser for the next time I comment.

Send Comment

Transnational Trails

This page explains how users can explore Culinary Trail markers, partner restaurants, published trails, and EuroVelo routes on the Transnational Trails maps.



Transnational Trails
Culinary Trail



Trails map
Culinary Trail



Using the Transnational Trails Pages

 **Estimated time: 15 minutes.**

The **Transnational Trails** section allows users to explore Units of Culinary Heritage, partner restaurants, culinary trails, and EuroVelo cycling routes on interactive maps. These pages are intended for browsing and exploring published content, rather than creating or editing entries.

The section is divided into two main pages:

1. **Transnational Trails page** – displays Units of Culinary Heritage and restaurants on a map.
2. **Trails Map page** – displays created trails together with EuroVelo routes.

Transnational Trails Page

The **Transnational Trails** page introduces visitors to the Culinary Trail routes and shows an interactive map with culinary markers from across the Danube Region.

On this map, users can view published **Units of Culinary Heritage** and **partner restaurants**. Each marker represents a published item that has been added to the platform.

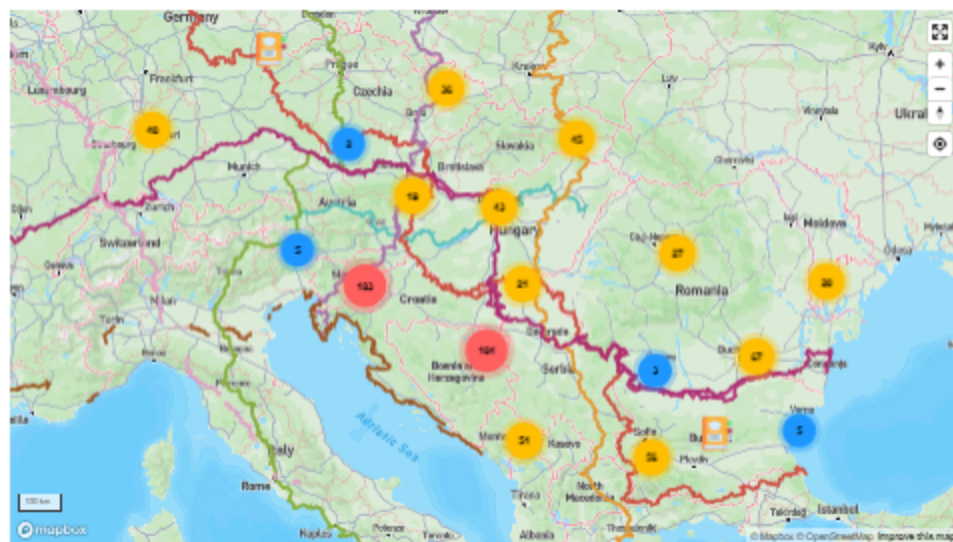


The Culinary Trail's **Transnational Trails** guide you through authentic culinary experiences across the Danube Region. Built on the rich data of our **Digital Catalogue**, they connect Units of Culinary Heritage from different countries, showcasing local and ethnic traditions in a seamless journey. The **interactive map** highlights individual culinary heritage regions and sites, featuring local producers, recipes, traditions, and unique experiences. Each site links to broader thematic and cycling routes, combining culinary discovery with sustainable, cross-regional travel.

Designed with **green mobility** in mind, the trails encourage responsible exploration through cycling paths and other eco-friendly options.

Whether you are a food enthusiast, cultural explorer, or curious traveller, the Transnational Trails help you plan memorable culinary tours while experiencing the richness of the region's heritage sustainably.

View the trails



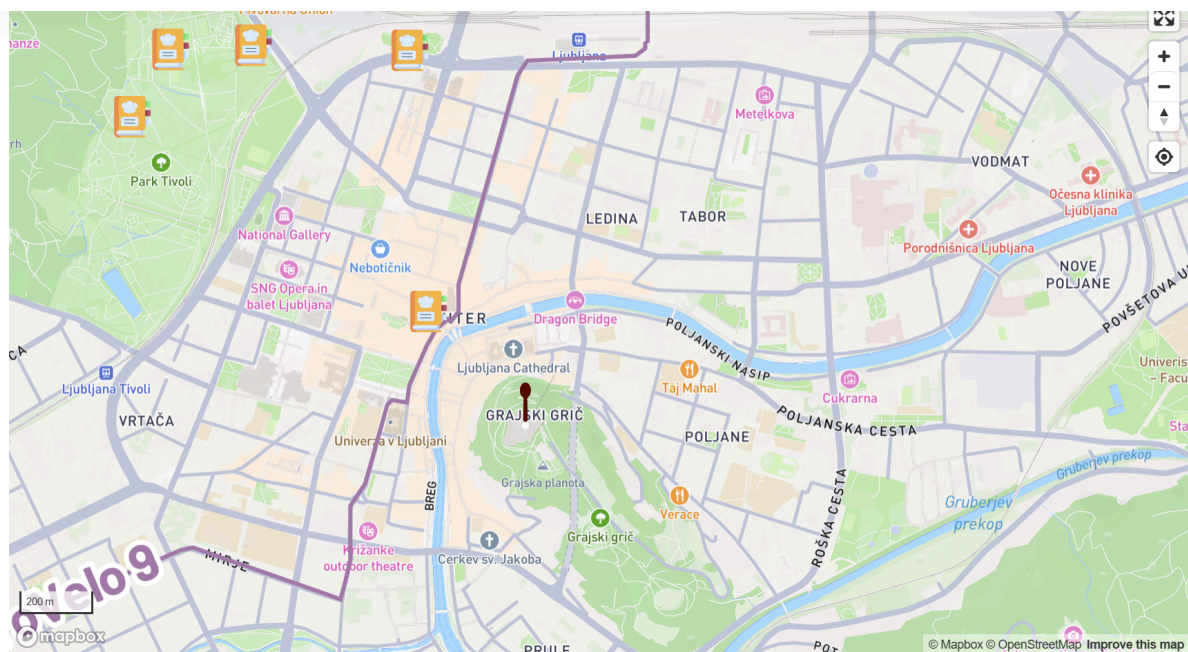
Culinary Markers on the Map

The map uses different markers to help users understand what type of content is displayed.

The available culinary markers include:

- **Unit of Culinary Heritage** – marks a culinary heritage entry, such as a recipe, story, tradition, beverage, or culinary practice.
- **Partner Restaurant** – marks a verified restaurant connected to the Culinary Trail.

Users can click on a marker to open a popup with basic information about that item.



Culinary Markers



Unit of Culinary Heritage

Marks a culinary heritage entry, recipe, story, or location.



Partner restaurant

A verified restaurant partner connected to the trail.

Cycling Routes



Amazon of Europe Trail



EuroVelo 5



EuroVelo 6



EuroVelo 7



EuroVelo 8

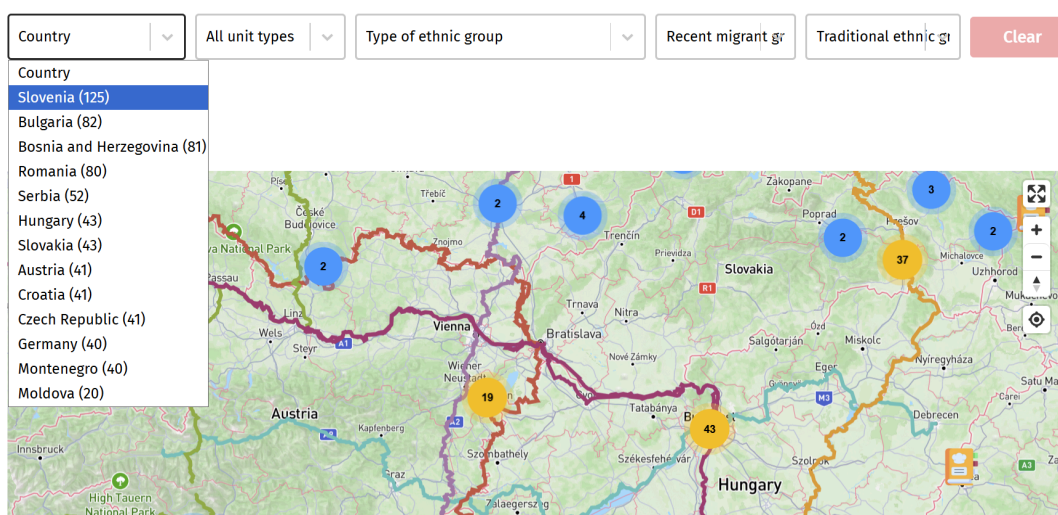
Filtering Units on the Map

The Transnational Trails map includes dynamic filtering options above the map. These filters work similarly to the filters on the Digital Catalogue page.

Users can filter displayed Units of Culinary Heritage by:

- **Country**
- **Unit Type**
- **Type of Ethnic Group**
- **Recent Migrant Group**
- **Traditional Ethnic Group**

When a filter is selected, the map automatically updates and displays only the matching units. The **Clear** button resets all selected filters and returns the map to its default view.



Viewing Unit Details from the Map

When users click on a Unit of Culinary Heritage marker, a popup appears with a short preview of the unit. The popup may include the unit image, title, country, ethnic group, and contributor information.

By clicking the unit popup or its title, users can open the full details page for that unit. On the details page, users can view the complete information, such as overview details, descriptions, recipes, traditions, location information, references, and other unit-specific content.



Gailtal Cheese Festival



Overview

Unit Type: Culinary Tradition	Country: Austria
Type of ethnic group: Traditional / Autochthonous ethnic groups	Traditional / Autochthonous ethnic groups: Slovenes
Project Partner(s): PP 07 - Carinthia University of Applied Sciences	

Culinary Tradition

Name of culinary tradition: Gailtal Cheese - Festival

Type of tradition: Festivals

Description of the tradition:

The Cheese-Festival in Kötschach-Mauthen, held annually on the last weekend of September, is a delightful culinary celebration in the heart of Carinthia. This festival showcases the region's rich cheese-making heritage, particularly the award-winning Gailtaler Almkäse, a European Protected Designation of Origin product. Visitors can indulge in a variety of cheeses, local delicacies, and regional wines, all set against the backdrop of the picturesque Gailtal Alps. The event also features traditional music, folk dances, and a vibrant market, appealing to food enthusiasts and culture seekers alike.

Location (City): Kötschach-Mauthen/Koče-Muta, Carinthia (AT)

Owner of activity:

Verein "So viel mehr Kötschach-Mauthen" - contact: info@kaesefest.at

References:

Viewing Restaurant Details from the Map

Partner restaurants can also be displayed on the map. When users click on a restaurant marker, a popup opens with basic restaurant information.

From the restaurant popup, users can open the restaurant details page or access directions, depending on the available options.



Trails Map Page

The **Trails Map** page displays published trails together with EuroVelo cycling routes. This page helps users explore culinary, wine, hiking, and cycling-related routes in connection with sustainable travel across the Danube Region.

Users can access this page from the **Transnational Trails** page by clicking the **View the trails** title or section.



View the trails

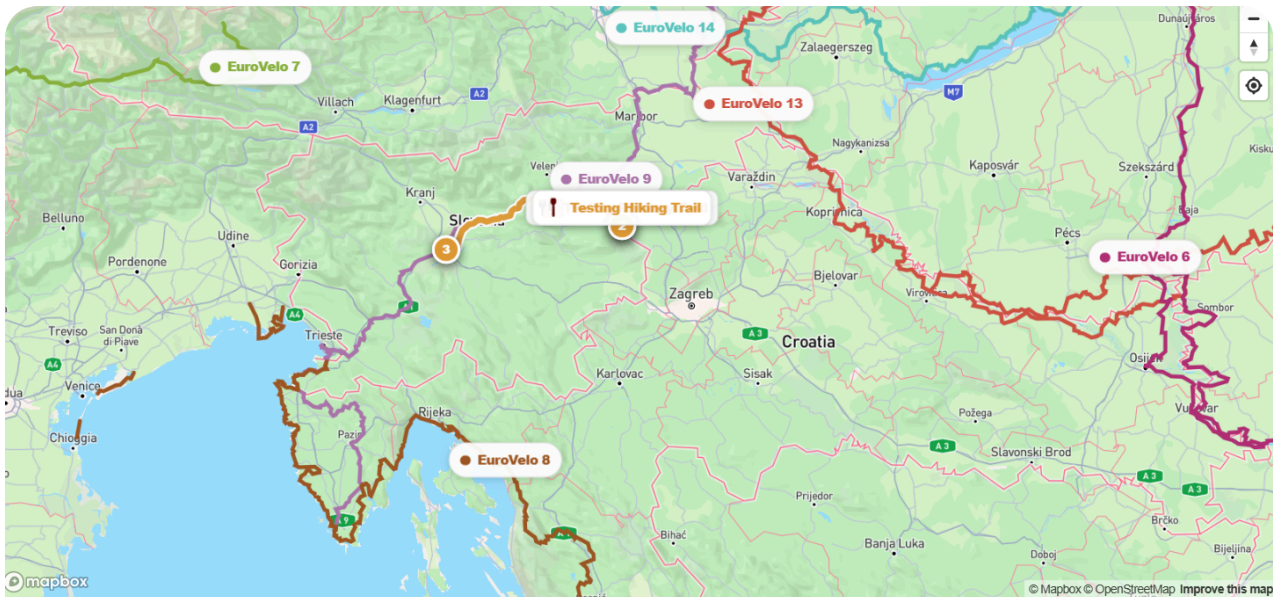
Exploring Trails and EuroVelo Routes

On the Trails Map page, users can view different published Culinary Trail routes on an interactive map. The map also displays EuroVelo cycling routes, allowing users to understand how culinary experiences connect with wider cycling and mobility routes.

The map includes lists of:

- **Culinary Trails**
- **Cycling Routes**

Each route is displayed with its own visual style, making it easier to distinguish between different trail types and cycling routes.



Culinary Trails

Wine Trail

Testing Wine trail

Cycling routes

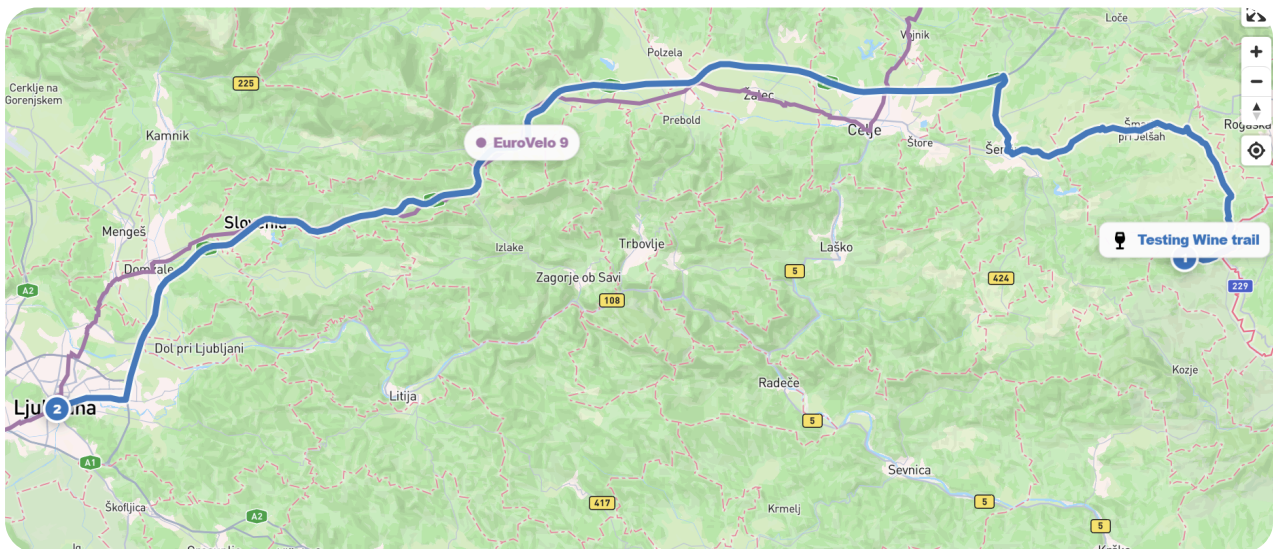
EuroVelo 5

EuroVelo 6

Viewing a Specific Trail

Users can select a trail from the list to focus on that route on the map. The selected trail is highlighted, and its route and stops become easier to follow.

Users can also open the trail details page from the trail list or map. The trail details page shows the trail title, type, featured image, description, route map, and restaurant stops.



Viewing Trail Details

The trail details page provides a full overview of the selected trail.

It includes:

- Trail title
- Trail type
- Featured image
- Trail description
- Trail map
- Restaurant stops

The restaurant stops are displayed both on the map and as cards below the map. Each stop card may include useful actions, such as viewing the restaurant details page, opening directions in Google Maps, or visiting the restaurant website.

Testing Wine trail

Wine Trail



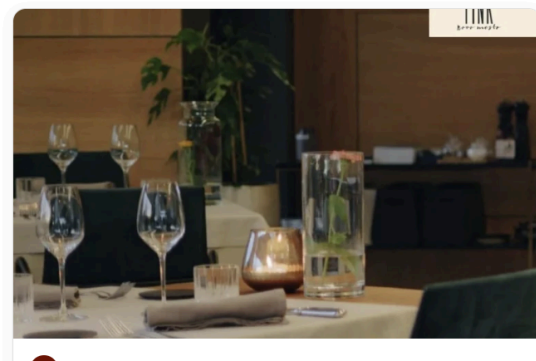
About this trail

this is a test

Trail map



Restaurant stops



Guides

Units of Culinary Heritage

This page explains how users can create, manage, and submit Units of Culinary Heritage for review in the Culinary Trail Digital Catalogue.

✔ **Estimated time: 15 minutes.** All you need is a created account.

Manage Units of Culinary Heritage

Users can contribute to the Culinary Trail Digital Catalogue by creating and managing **Units of Culinary Heritage**. These units may include traditional dishes, recipes, beverages, culinary techniques, traditions, stories, or other forms of culinary heritage connected to a community or region. The catalogue supports the project's goal of safeguarding and recording traditional recipes, practices, and food-related rituals in the Danube Region.

Accessing Your Account

After creating an account and signing in, users can access their personal account area through the **My Account** page.

The account dashboard allows users to manage their submitted content, including:

- Culinary Units
- Restaurants
- Trails
- Account details

To manage Units of Culinary Heritage, select **My Culinary Units** from the account menu.

Dashboard
My Culinary Units
My Restaurants
My Trails
Account details
Log out

My Culinary Units

[Add new Unit](#)

Title	Status	Date	Actions
Bobiči – Minestra de Bobiči	Pending	24.02.2026	Edit Delete
Gottscheer Potato Spiral Roll – Earpfitsäutle	Pending	24.02.2026	Edit Delete
Polenta con Fegatini – Polenta with Livers	Pending	24.02.2026	Edit Delete
Baccalà mantecato – Salt Cod Spread	Pending	24.02.2026	Edit Delete
Fuži – Thin Hand Rolled Pasta	Pending	24.02.2026	Edit Delete
Adjapsandal – Vegetable lecho	Pending	24.02.2026	Edit Delete

Viewing Existing Culinary Units

In the **My Culinary Units** section, users can see a list of all Units of Culinary Heritage they have already created.

Each unit is displayed with the following information:

- **Title**
- **Status**
- **Date**
- **Available actions**, such as editing or deleting the unit

Newly submitted units are marked with the status **Pending** until they are reviewed by a Content Manager.

Title	Status	Date
Bobiči – Minestra de Bobiči	Pending	24.02.2026

Adding a New Unit

To create a new Unit of Culinary Heritage, click the **Add new Unit** button.

This opens the unit submission form, where users can enter information about the culinary heritage item they want to contribute.



Add new Unit

Completing the Unit Submission Form

The submission form is divided into several sections.

Co-create the Culinary Trail Digital Catalogue

Join us in co-creating a living digital catalogue by contributing units of culinary heritage, such as traditional food and beverage recipes, culinary practices, stories, and traditions that represent the culinary heritage of your community.

TITLE *

FEATURED IMAGE



CLICK OR DRAG TO UPLOAD A FEATURED IMAGE JPG OR PNG, MIN. 800x600 RECOMMENDED

Izberite datoteko Nobena datoteka ni izbrana

UNIT TYPE *

COUNTRY *

PROJECT PARTNER

TYPE OF ETHNIC GROUP

TRADITIONAL / AUTOCHTHONOUS ETHNIC GROUPS

The Unit Submission Form is organized into several tabs to make the submission process easier to follow.

Each tab contains a specific group of fields related to the selected type of culinary heritage. Users should first complete the Overview tab, then select the appropriate Unit Type.

Depending on the selected type, the corresponding tab — Food, Beverage, Technique, or Tradition — becomes available for entering detailed information.

The Media tab can be used to add images and video content for the submitted unit.

Overview Tab

Overview Tab


In the **Overview** tab, users enter the basic information about the unit.

This includes general details such as the unit title, country, project partner, ethnic group information, and other required classification fields.

Fields marked with an asterisk are mandatory and must be completed before the unit can be submitted.

TITLE *

FEATURED IMAGE

 CLICK OR DRAG TO UPLOAD A FEATURED IMAGE JPG OR PNG, MIN. 800x600 RECOMMENDED

Izberi datoteko | Izbrana ni nobena datoteka.

Overview Food Beverage Technique Tradition **Media**

UNIT TYPE *

COUNTRY *

PROJECT PARTNER

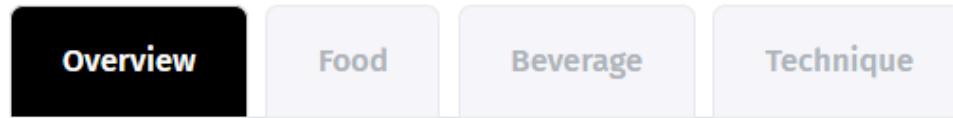
TYPE OF ETHNIC GROUP

TRADITIONAL / AUTOCHTHONOUS ETHNIC GROUPS

The user must select a **Unit Type**.

After a unit type is selected, an additional tab becomes available. For example, if the user selects **Food**, the **Food** tab is enabled.

The user should then open this tab and complete the required details related to the selected unit type.



UNIT TYPE *

C

Culinary Tradition

Select...

Beverage

Culinary Technique

Culinary Tradition

Food

T

Food Tab

Food Tab

If the selected unit type is **Food**, the user should fill in all relevant information about the dish or food item.

This may include descriptive details, ingredients, preparation information, cultural background, and any other required fields provided in the form.

SHORT DESCRIPTION OF THE DISH

RECIPE

Visual Code

B ***I*** **U** “ ” ABC ☰ ☷ ☹ ☺ ☻ ☼ ↶ ↷ 🔗 ✕

COOKING TECHNIQUES AND APPLIANCES USED

LOCATION (CITY)

GEOLOCATION (LAT,LNG)

47.5018, 19.0285

OWNER OF ACTIVITY

REFERENCES AND/OR LINK

Submit Unit of Culinary Heritage

Beverage Tab

Beverage Tab

If the selected unit type is **Beverage**, the **Beverage** tab becomes available. In this section, users should provide detailed information about the beverage they are submitting.

Users can enter the type of beverage, its classification, a short description, and information about the preparation process or techniques used. This section should clearly describe the beverage's cultural, traditional, or local significance, especially if it is connected to a specific community, region, or preparation method.

TYPE OF BEVERAGE

Select...

CLASSIFICATION OF BEVERAGE

SHORT DESCRIPTION OF THE BEVERAGE

PROCESS AND TECHNIQUES OF PREPARATION

LOCATION (CITY)

GEOLOCATION (LAT,LNG)

47.5018, 19.0285

OWNER OF ACTIVITY

REFERENCES

Technique Tab

Technique Tab

If the selected unit type is **Technique**, the **Technique** tab becomes available. This section is used to document culinary methods, preparation processes, or traditional kitchen practices.

Users should provide the name of the culinary technique, describe how it is performed, and list any appliances, tools, or equipment used. If the technique includes an innovative, sustainable, or resource-efficient approach, this can be described in the **Identified Frugal Innovation** field.

Tradition Tab

Tradition Tab

If the selected unit type is **Tradition**, the **Tradition** tab becomes available. This section is intended for documenting culinary customs, rituals, stories, celebrations, or other food-related traditions.

Users should select the type of tradition, enter the name of the culinary tradition, and provide a clear description of its meaning, background, and relevance. The description should explain how the tradition is practiced and why it is important for the local community or cultural heritage.

TYPE OF TRADITION

NAME OF CULINARY TRADITION

DESCRIPTION OF THE TRADITION

LOCATION (CITY)

GEOLOCATION (LAT,LNG)

OWNER OF ACTIVITY

REFERENCES

Media Tab

Media Tab

In the **Media** tab, users can add visual and multimedia content for the unit.

Users can:

- Add a video URL, such as a YouTube link
- Upload additional gallery images

Gallery images are displayed under the unit description and help present the culinary item more clearly in the Digital Catalogue.

VIDEO URL (YOUTUBE/VIMEO)

GALLERY IMAGES



CLICK OR DRAG TO UPLOAD MULTIPLE IMAGES HOLD CTRL/CMD TO SELECT MULTIPLE FILES

Izberi datoteke Nobena datoteka ni izbrana

Submit Unit of Culinary Heritage



Common Fields in All Unit Forms

Several fields appear across all unit types, including **Location**, **Geolocation**, and **References**.

The **Location** field should be used to enter the city or place connected to the submitted unit. This may be the location of a restaurant, producer, local community, event, or other place where the dish, beverage, technique, or tradition can be experienced.

The **Geolocation** field can be used to enter latitude and longitude coordinates, helping to place the unit accurately on a map.

The **References** field should include any relevant sources, such as a restaurant website, official webpage, publication, article, or other link that provides additional information about the submitted unit.

Based on the References data, the Content Manager creates a new Restaurant and saves it to the Database. It is very important that Content manager also goes to the Unit's details and connects it to the newly created restaurant (this is done in the wordpress dashboard).

Submitting the Unit

After completing all required fields, the user can submit the unit.

Once submitted, the unit will appear in the **My Culinary Units** list with the status **Pending**.

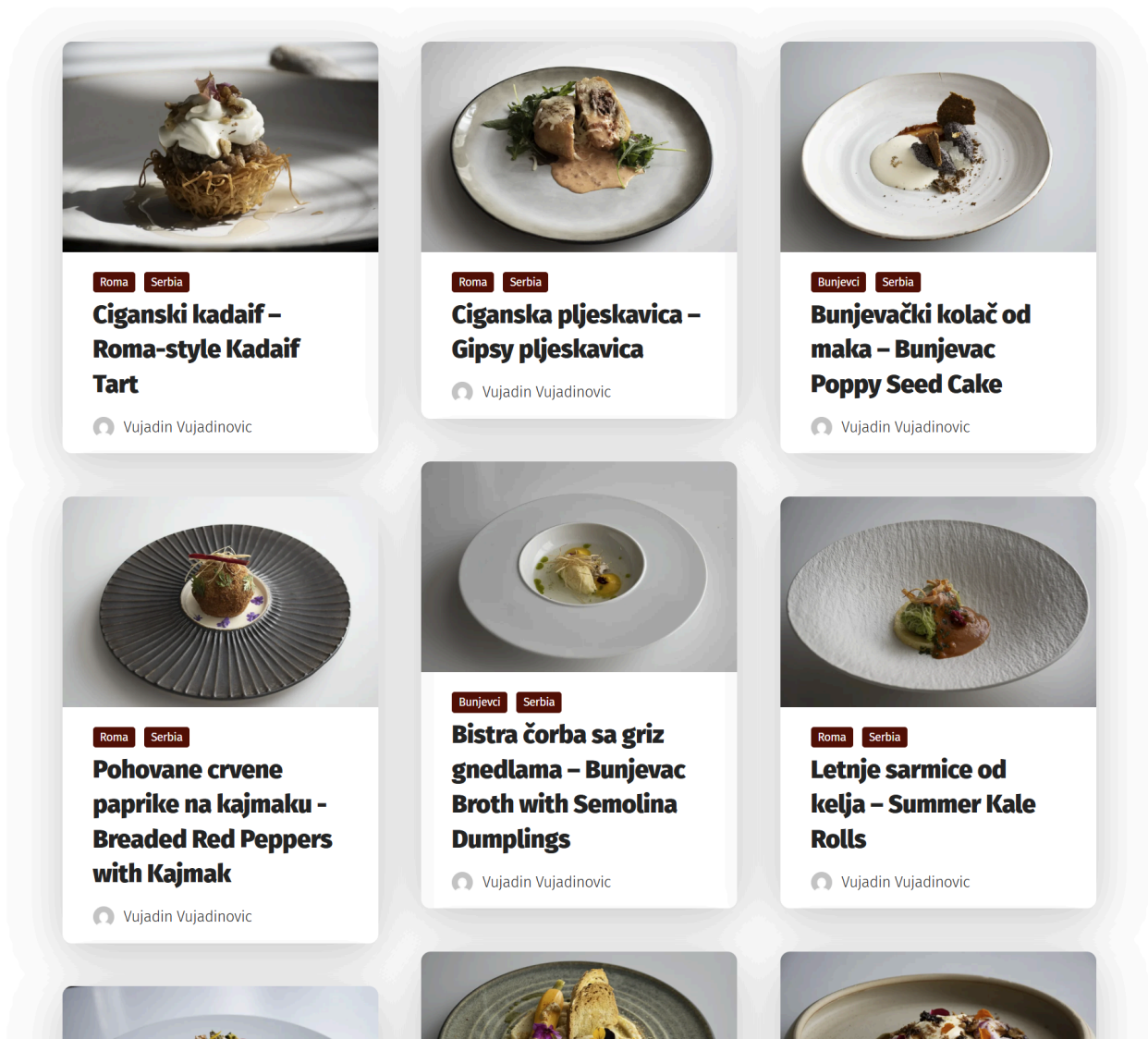
This means the unit has been saved successfully and is waiting for review.

Approval and Publication

All submitted units must be reviewed by a Content Manager before they are published.

When the Content Manager approves the unit, its status changes from **Pending** to **Published**.

After publication, the unit becomes visible in the **Digital Catalogue** and can be viewed by other users as part of the Culinary Trail collection.



Editing or Deleting a Unit

Users can manage their submitted units from the **My Culinary Units** list.

Available actions may include:

- **Edit** – update or correct the information in an existing unit
- **Delete** – remove a unit from the user's list

If a published unit is edited, it may require another review before the changes are visible publicly, depending on the approval process.

Restaurants

This page explains how users can create, manage, view, edit, and submit restaurants for publication on the Culinary Trail platform.

✔ **Estimated time: 15 minutes.** All you need is a created account.

Managing Restaurants

Registered users can add and manage restaurants through the **My Restaurants** section of their account dashboard. Restaurants added to the system can later appear on the Transnational Trails map once they have been reviewed and approved by a Content Manager.

Accessing My Restaurants

After signing in, users can open the **My Account** page and select **My Restaurants** from the account menu.

This section displays all restaurants created by the user. Each restaurant is shown in a table with the following information:

- **Title**
- **Status**
- **Date**
- **Actions**

The available actions allow users to **view**, **edit**, or **delete** a restaurant.

Dashboard
My Culinary Units
My Restaurants
My Trails
Account details
Log out

My Restaurants

[Add new Restaurant](#)

Title	Status	Date	Actions
Hiša Fink	Published	20.05.2026	View Edit Delete
Gostišče jelenov greben	Published	18.05.2026	View Edit Delete
Restavracija Strelec	Published	18.05.2026	View Edit Delete

Restaurant Status

When a restaurant is first submitted, its status is set to **Pending**. This means that the restaurant has been saved successfully and is waiting for review.

After the restaurant is approved by a Content Manager, its status changes to **Published**. Published restaurants become visible on the **Transnational Trails map** and are marked with the Culinary Trail restaurant icon, shown as a spoon in the Culinary Trail style.



Adding a New Restaurant

To create a new restaurant, users should click the **Add new Restaurant** button in the **My Restaurants** section.

This opens the restaurant submission form, where users can enter the main information about the restaurant.

Add new Restaurant

Completing the Restaurant Submission Form


The restaurant form contains the key details needed to present the restaurant in the system.

RESTAURANT NAME ***DESCRIPTION**

Visual Code

B *I* U “ ” ABC

FEATURED IMAGE

 **CLICK OR DRAG TO UPLOAD A FEATURED IMAGE** JPG OR PNG RECOMMENDED

Izberite datoteko Nobena datoteka ni izbrana**ADDRESS ***

Example: Olimje 90, 3254 Olimje, Slovenija

LATITUDE ***LONGITUDE *****PHONE NUMBER****WEBSITE****COUNTRY****Submit Restaurant**

Users should complete the following fields:

✓ **Restaurant Name**

Enter the official name of the restaurant. This is a required field and will be displayed as the restaurant title.

✓ **Description**

Use this field to provide a short description of the restaurant. The description may include information about the restaurant's offer, culinary focus, local connection, or relevance to the Culinary Trail.

✓ **Featured Image**

Upload a featured image that represents the restaurant. This image will be displayed on the restaurant page and should clearly present the restaurant, its interior, exterior, food, or visual identity.

✓ **Address**

Enter the full address of the restaurant. This helps users locate the restaurant and supports accurate map display.

✓ **Latitude and Longitude**

Enter the restaurant's geographic coordinates. These coordinates are used to place the restaurant on the map.

✓ **Phone Number**

Enter the restaurant's contact phone number, if available.

✓ **Website**

Add the restaurant's official website or another relevant link where users can find more information.

✓ **Country**

Select the country where the restaurant is located.

Fields marked with an asterisk are required and must be completed before submitting the restaurant.

Submitting a Restaurant

After all required information has been entered, users can click **Submit Restaurant**.

The restaurant will then appear in the **My Restaurants** list with the status **Pending**. Once it has been reviewed and approved by a Content Manager, the status will change to **Published**.

Viewing a Restaurant

Users can click **View** to open the public restaurant page.

On this page, users can see the restaurant's details, including its featured image, address, contact information, website, map location, and description. The page may also display ratings and user comments.

Logged-in users can leave a review and rating for the restaurant.



Hiša Fink

Location & Contact

Address:

Irča vas 13, 8000 Novo mesto, Slovenia

Phone: 051333999

Website: <https://hisafink.si/>



About This Place

Test restaurant frontend

Rating Overview





1 Comment



Tomaz Jakša

20.05.2026



If you can read this, you can read

REPLY EDIT

Leave a Comment

Logged in as Tomaz Jakša. [Edit your profile](#). [Log out?](#) Required fields are marked *

Editing or Deleting a Restaurant

From the **My Restaurants** list, users can manage their restaurants using the available action buttons.

The **Edit** button allows users to update restaurant information.

The **Delete** button removes the restaurant from the user's list.

If changes are made to a restaurant, they may need to be reviewed again before appearing publicly.

Trails

This page explains how users can create, manage, view, edit, and submit trails with selected restaurant stops for publication on the Culinary Trail platform.

✔ **Estimated time: 15 minutes.** All you need is a created account.

Managing Trails

Registered users can create and manage trails through the **My Trails** section of their account dashboard. Trails allow users to connect selected restaurants into a themed route, such as a culinary trail, wine trail, hiking trail, or bike trail.

Once a trail is approved and published, it becomes visible on the platform and can be explored on the Transnational Trails map.

Accessing My Trails

After signing in, users can open the **My Account** page and select **My Trails** from the account menu.

This section displays all trails created by the user. Each trail is shown in a table with the following information:

- **Title**
- **Status**
- **Date**
- **Actions**

The available actions allow users to **view**, **edit**, or **delete** a trail.

Dashboard
My Culinary Units
My Restaurants
My Trails
Account details
Log out

My Trails

[Add new Trail](#)

Title	Status	Date	Actions
Testing Wine trail	Published	20.05.2026	View Edit Delete
Testing Culinary Trail	Published	20.05.2026	View Edit Delete
Testing Hiking Trail	Published	22.10.2025	View Edit Delete

Adding a New Trail

To create a new trail, click the **Add new Trail** button.

This opens the trail creation form, where users can enter the main information about the trail and select the restaurants that should be included as stops.

[Add new Trail](#)

Completing the Trail Creation Form


The trail creation form contains the required information needed to create and display the trail.

TRAIL NAME ***TRAIL DESCRIPTION ***

Visual Code

B *I* U “ ” ABC ☰ ☷ ☹ ☺ ☻ ↶ ↷ 🔗 ✕

FEATURED IMAGE

 **CLICK OR DRAG TO UPLOAD A FEATURED IMAGE** JPG OR PNG RECOMMENDED

Izberite datoteko Nobena datoteka ni izbrana**TRAIL TYPE ***

- BIKE TRAIL
- CULINARY TRAIL
- HIKING TRAILS
- WINE TRAIL

RESTAURANT STOPS *

Select the restaurants that should appear as stops on this trail.

- GOSTIŠČE JELENOV GREBEN (PUBLISHED)
- HIŠA FINK (PUBLISHED)
- RESTAVRACIJA STRELEC (PUBLISHED)

Users should complete the following fields:

✓ **Trail Name**

Enter the name of the trail. This is a required field and will be displayed as the trail title.

✓ **Trail Description**

Use this field to describe the trail. The description can include information about the theme of the route, the culinary experience, the region, and what visitors can discover by following the trail.

✓ **Featured Image**

Upload a featured image that represents the trail. This image will be displayed on the trail details page.

✓ **Trail Type**

Select the appropriate trail type. Available options may include:

- Bike Trail
- Culinary Trail
- Hiking Trail
- Wine Trail

✓ **Restaurant Stops**

In the **Restaurant Stops** section, users can select restaurants that are already saved in the system. Selected restaurants will become stops on the trail and will be displayed on the trail map and in the list of restaurant stop cards.

Submitting a Trail

After completing the required fields and selecting the restaurant stops, users can submit the trail.

Once submitted, the trail status is set to **Pending**. This means the trail has been saved successfully and is waiting for review by a Content Manager.

After the Content Manager approves the trail, its status changes to **Published**. Published trails become visible on the platform and can be viewed by users.

Viewing a Trail

Users can click **View** to open the trail details page.

The trail details page displays the main information about the trail, including its title, type, featured image, and description. It also includes a trail map showing the selected restaurant stops.

Under the map, the restaurant stops are displayed as individual cards. Each card provides useful information about the stop and includes action buttons that allow users to:

- Open the restaurant details page
- Get directions in Google Maps
- Visit the restaurant website

Testing Culinary Trail

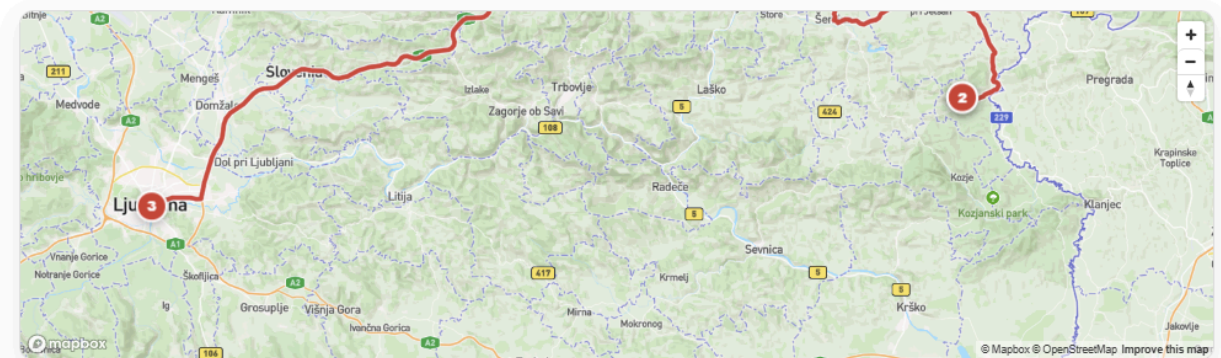
Culinary Trail



About this trail

This trial was created for testing purposes. The Culinary Trail's Transnational Trails guide you through authentic culinary experiences across the Danube Region. Built on the rich data of our Digital Catalogue, they connect Units of Culinary Heritage from different countries, showcasing local and ethnic traditions in a seamless journey. The interactive map highlights individual culinary heritage regions and sites, featuring local producers, recipes, traditions, and unique experiences. Each site links to broader thematic and cycling routes, combining culinary discovery with sustainable, cross-regional travel. Designed with green mobility in mind, the trails encourage responsible exploration through cycling paths and other eco-friendly options. Whether you are a food enthusiast, cultural explorer, or curious traveller, the Transnational Trails help you plan memorable culinary tours while experiencing the richness of the region's heritage sustainably.

Trail map



Restaurant stops



1

Gostišče jelenov greben

Address:

Olimlje 90, 3254 Olimlje, Slovenija

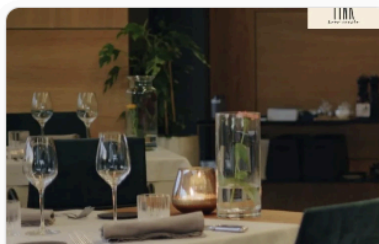
Phone: 00386 (0)3 5829 046

Frontend edit

[View restaurant](#)

[Directions](#)

[Website](#)



2

Hiša Fink

Address:

Irča vas 13, 8000 Novo mesto, Slovenia

Phone: 051333999

Test restaurant frontend

[View restaurant](#)

[Directions](#)

[Website](#)

STRELEC
RESTAVRACIJA
LJUBLJANSKI GRAD

3

Restavracija Strelec

Address:

Grajska planota 1, 1000 Ljubljana, Slovenija

Phone: 031 687 648

Testna restavracija

[View restaurant](#)

[Directions](#)

[Website](#)

Editing or Deleting a Trail

From the **My Trails** list, users can manage their created trails using the available action buttons.

The **Edit** button allows users to update trail information, such as the description, image, trail type, or selected restaurant stops.

The **Delete** button removes the trail from the user's list.

If changes are made to a published trail, they may need to be reviewed again before appearing publicly.

Viewing Trails on the Transnational Trails Map

Published trails can also be viewed from the main website navigation.

To access the public trails map, open the **Transnational Trails** page and click **View the trails**. This opens the **Transnational Trails Map**, where users can explore the available trails displayed on an interactive map.

Transnational Trails

Follow the Transnational Trails to discover the rich culinary traditions of the Danube Region.

The Culinary Trail's **Transnational Trails** guide you through authentic culinary experiences across the Danube Region. Built on the rich data of our **Digital Catalogue**, they connect Units of Culinary Heritage from different countries, showcasing local and ethnic traditions in a seamless journey. The **interactive map** highlights individual culinary heritage regions and sites, featuring local producers, recipes, traditions, and unique experiences. Each site links to broader thematic and cycling routes, combining culinary discovery with sustainable, cross-regional travel.

Designed with **green mobility** in mind, the trails encourage responsible exploration through cycling paths and other eco-friendly options.

Whether you are a food enthusiast, cultural explorer, or curious traveller, the Transnational Trails help you plan memorable culinary tours while experiencing the richness of the region's heritage sustainably.



View the trails

Transnational Trails Map

Explore Culinary Trail routes and EuroVelo corridors across the Danube Region.

Reset map SHOW CULINARY TRAILS SHOW CYCLING ROUTES

Culinary Trails

- Wine Trail
- Testing Wine trail
- Culinary Trail

Cycling routes

- EuroVelo 5
- EuroVelo 6
- EuroVelo 7

The map shows different Culinary Trail routes together with EuroVelo cycling routes, allowing users to view culinary experiences in connection with broader sustainable travel routes.

News

Go from sign-up to your first deploy in under five minutes.



News

Culinary Trail



Estimated time: 5 minutes.

This documentation page is yet to be edited.

Events

Go from sign-up to your first deploy in under five minutes.



Events

Culinary Trail



Estimated time: 5 minutes.

This documentation page is yet to be edited.