



Fig. S1. Photographs of watermelons from the surveyed field: watermelon sample infected with watermelon crinkle leaf-associated virus 1 (WCLaV-1) and WCLaV-2 showing necrosis, drying, leaf wilting (A) and leaf mosaic symptoms (B), and leaf of the plant without obvious virus-like symptoms (C).

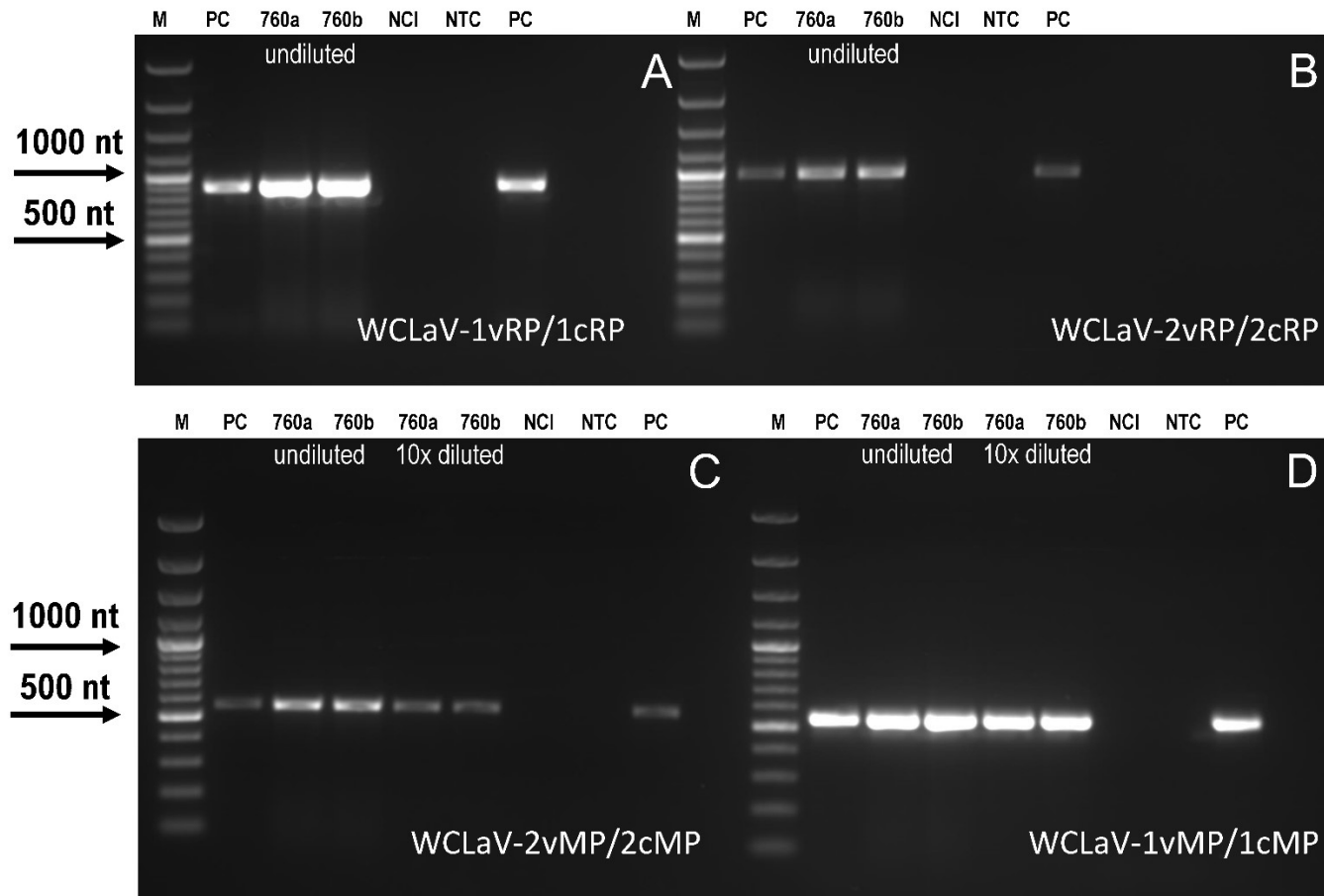


Fig. S2. Detection of watermelon crinkle leaf-associated virus 1 (WCLaV-1) and WCLaV-2 by reverse transcription–polymerase chain reaction (RT-PCR): RNA-dependent RNA polymerase gene sequences A) of WCLaV-1 with primers WCLaV-1vRP/1cRP, B) of WCLaV-2 with primers WCLaV-2vRP/2cRP; movement protein gene sequences C) of WCLaV-2 with primers WCLaV-2vMP/2cMP, and D) of WCLaV-1 with primers WCLaV-1vMP/1cMP. M - GeneRuler 100bp Plus DNA Ladder (Thermo Scientific), PC - positive control, NCI - negative control of extraction, NTC - no template control, 760 – sample D760/24, a and b – technical replicates.

Supplementary Table S1. The PCR, qPCR and RT-PCR conditions, primers, and probes used for the detection of for tomato leaf curl New Delhi virus (ToLCNDV), other begomoviruses and the watermelon crinkle leaf-associated virus 1 (WCLaV-1) and WCLaV-2.

Virus tested	Primer	Sequence (5' → 3') ^a	Cycling conditions	NA used for testing	Amplicon size (bp)	Reference
ToLCNDV	ToLA-up	CATTATTGCACGAATTTCCG	50°C 2 min, 95°C 10 min, 45x (95°C 15 s, 60°C 60 s)	DNA	109	Simon et al. 2018
	ToLA-low	ATCGTAGCCGACTGTGTCTG				
	ToLA-probe	FAM-CATGCACCTTAGACCATGGACGCT-BHQ1				
	B-Rev	CAAGCAGAATTCACAATTCCAATC	50°C 2 min, 95°C 10 min, 45x (95°C 15 s, 60°C 60 s)	DNA	91	Luigi et al. 2020
	B-Fow	TCCAAGGATTCTTATCCTTKAGAGAG				
	B-Probe	HEX-TGAGGAAGAGTAGTAGTGGAGGTTACAGT-BHQ1				
begomoviruses	SPG1	CCCCKGTGCGWRAATCCAT	94°C 2 min, 11x (94°C 15 s, ramping 61°C + 1°C to 72°C 40 s, 72°C 90s), 24x (94°C 40 s, 60°C 40 s, 72°C 90s), 72°C 10 min	DNA	912	Li et al. 2004
	SPG2	ATCCVAAYWTYCAGGGAGCTAA				
	Beg-CP-F	GCCCATGTAYMGRAARCC	94°C 3 min, 35x (94°C 30 s, 58°C 35 s, 72°C 30s), 72°C 7 min	DNA	580 or 950	Saison and Gentit 2015
	Beg-580-R	GGRTTAGARGCATGMGTACA				
WCLaV-1	WCLaV-1vRP	GGTGAGTTAGTGTGTCTGAAGG	50°C 30 min, 95°C 15 min, 35x (94°C 60 s, 50°C 30 s, 72°C 60 s), 72°C 10 min	RNA	881	Hernandez et 2021
	WCLaV-1cRP	GAGGTTGCCTGAGGTGATAAG				
	WCLaV-1vMP	GAAGGTTTGCTCCCTTGAAATG				
	WCLaV-1cMP	GACTGTGGCTGAAGAGTCTATG				
WCLaV-2	WCLaV-2vRP	GTCTCACATTCTGCACTAACT			968	
	WCLaV-2cRP	ATCGGTCCTGGGTATTTGTATC				
	WCLaV-2vMP	GACTTCAGAACCTCAACATCCA				
	WCLaV-2cMP	CAAGGGAGAGTGCTGACAAA				

^a .Y = C or T; R = A or G; M = A or C; W = A or T, D = A or G or T; H = A or C or T.

References:

Hernandez, R. N., et al. 2021. *Plant Dis.* 105:2025. <https://doi.org/10.1094/PDIS-02-21-0249-PDN>

Li, Z. H., et al. 2004. *Arch. Virol.* 149:1721–1732. <https://doi.org/10.1007/s00705-004-0334-7>

Luigi, M., et al. 2020. *Eur. J. Plant Pathol.* 157:969–974. <https://doi.org/10.1007/s10658-020-02038-1>

Saison, A., and Gentit, P. 2015. TESTA–EPPO Conference on diagnostics for plant pests, Angers, France.

Simón, A., et al. 2018. *Plant Dis.* 102:165–171. <https://doi.org/10.1094/PDIS-06-17-0840-RE>