

Towards Integrated Research Support Services in the Era of Open Science

dr. Alenka PRINČIČ, Univerzitetna knjižnica Univerze v Leidnu

Ljubljana in online, Centralna tehniška knjižnica Univerze v Ljubljani,
Predstavitev za konzorcijske partnerje in širšo javnost, 13. 6. 2024



Towards Integrated Research Support Services in the Era of Open Science

Alenka Prinčič | Leiden University Libraries | June 2024

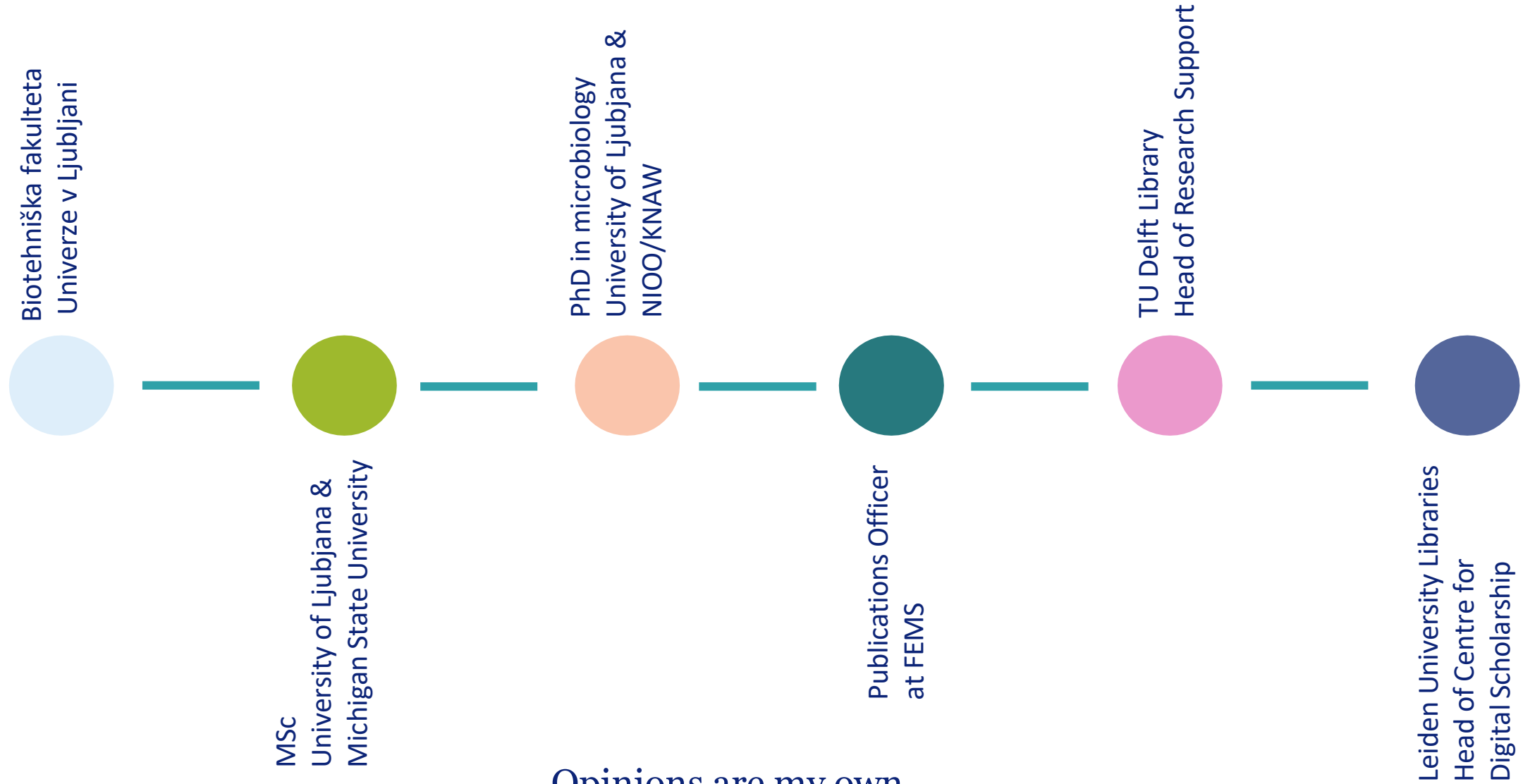
With contributions from the team members CDS



**Universiteit
Leiden**

Leiden University Libraries

About the speaker: Alenka Prinčič in a nutshell....



Opinions are my own.

Leiden University & the Libraries – UBL

Leiden University, including a library, was founded in 1575. Latest numbers:

33,500 students

4980 FTE staff members

1900 Academic staff members

878 FTE PhD candidates

2885 FTE researchers

6700 academic publications per year (in 2022)

515 PhD awarded (in 2022)

Leiden University has seven faculties, situated in Leiden and The Hague

- Archaeology
- Governance and Global Affairs
- Humanities
- Law
- Medicine/Leiden University Medical Center
- Science
- Social and Behavioural Sciences

And more than 30 faculty- and interfaculty institutes.



Leiden University & the Libraries – UBL

We are the oldest and largest university library in the Netherlands.

We have 10 locations:

- University Library Leiden (main)
- Asian Library
- Law Library
- Science Library
- Social and Behavioural Sciences Library
- NINO Library (Ancient Near East)
- Walaeus Library (Medical Library)
- Wijnhaven Campus The Hague
- KITLV Jakarta
- NIMAR Rabat



Centre for Digital Scholarship

Leiden University



Leiden University Libraries



Centre for Digital Scholarship

- Centre for Digital Scholarship established in 2016
- Focus areas: **Open Access, Research Data Management, Software Management***, Use of Digital Data, Copyright
- Policy priority: **Open Science**
- The core: 10 employees

Centre for Digital Scholarship

The Centre for Digital Scholarship (CDS) supports Open Science by providing information, consultancy, and training on the following topics.

- Copyright Information Office**
For all your queries on copyright
- Data management**
Training, advice and instruction
- Open Access**
Publication advice and hands on help
- Research Software & Data Engineering**
Text/data mining, tools, and FAIR research software
- Open Science**
FAIR data, Open Access and citizen science
- Events and workshops**
Training, tutorials, workshops

<https://www.library.universiteitleiden.nl/about-us/centre-for-digital-scholarship>

Contents of this presentation:

About Research Support in Dutch Universities:

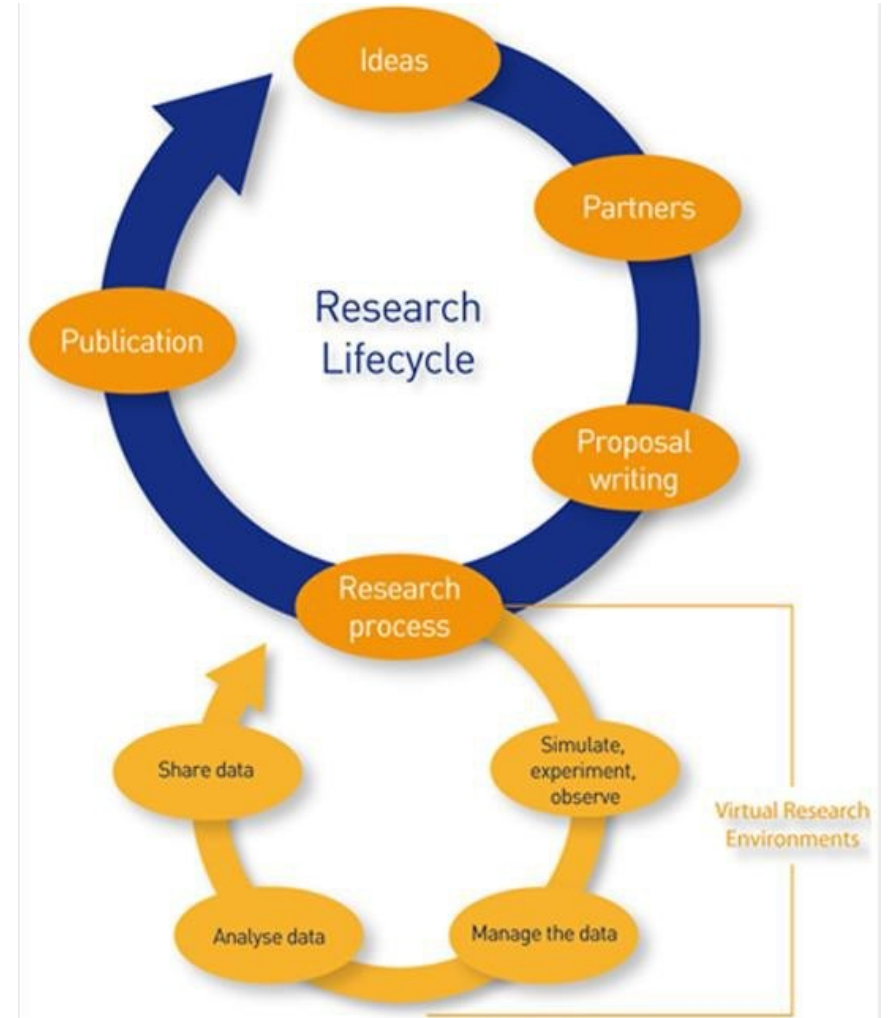
- 
- Reorganizing services along research lifecycle
 - Open science within research lifecycle: national approach → NPOS, SURF, UNL (VSNU)
 - Digital Competence Centers (DCCs & TDCCs)
 - How do universities (libraries) organize research support for open science

About Research Support at Leiden University:

- Leiden Research Support (Network, Offices)
- Leiden Digital Competence Center (LDCC)
- Centre for Digital Scholarship & Research Data Management
- What's on a horizon - Open Publishing Policy and implementation; Barcelona Declaration

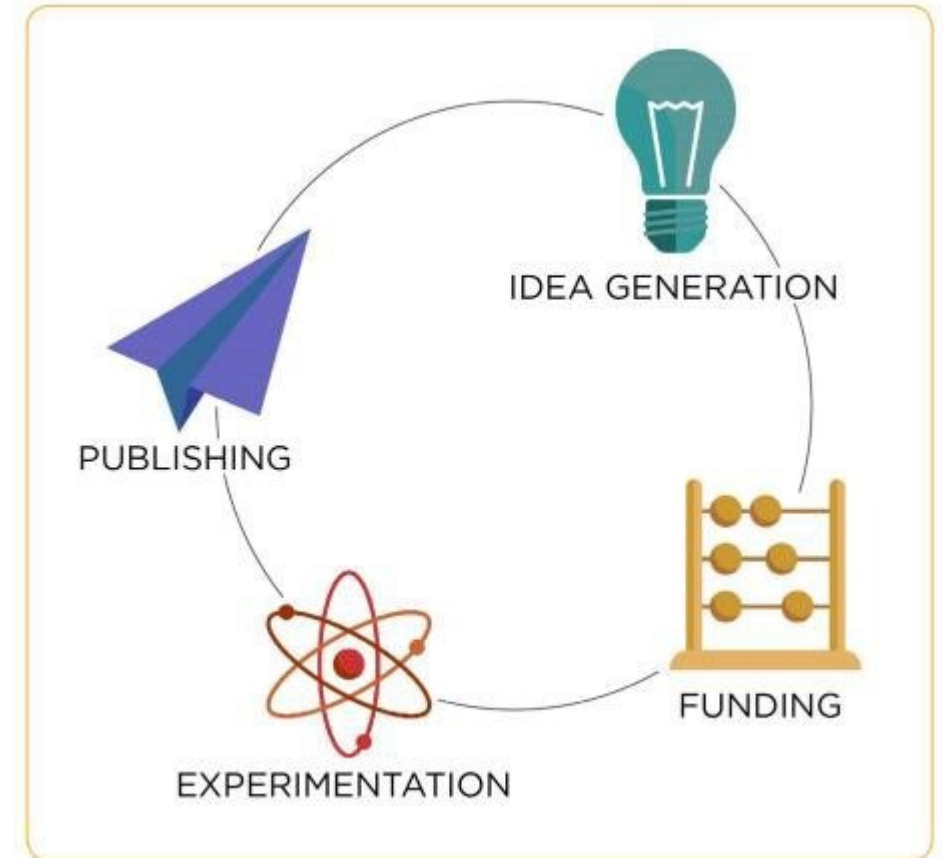
Research Support in Dutch Universities:

- Reorganizing services along research lifecycle
- A model for integrated research support is 'old'. Already back in 2010-2012 several Dutch university libraries found inspiration in some Anglo-Saxon university libraries models of RS.
- University libraries stepped away from the 'passive' Products and Services Catalogue' but rather organized their research-related support questions along the stages of the primary process – the research lifecycle.




Research Support in Dutch Universities:





- First adoption of research lifecycle & research support in the Netherlands was by the Library of University of Maastricht (the library page displaying only library services related to research practice at the university)
- Almost simultaneously was the launch of the new **Research Support Portal** at TU Delft in 2014 that adopted an integrated, central 'one-stop-shop' including all corporate offices' support

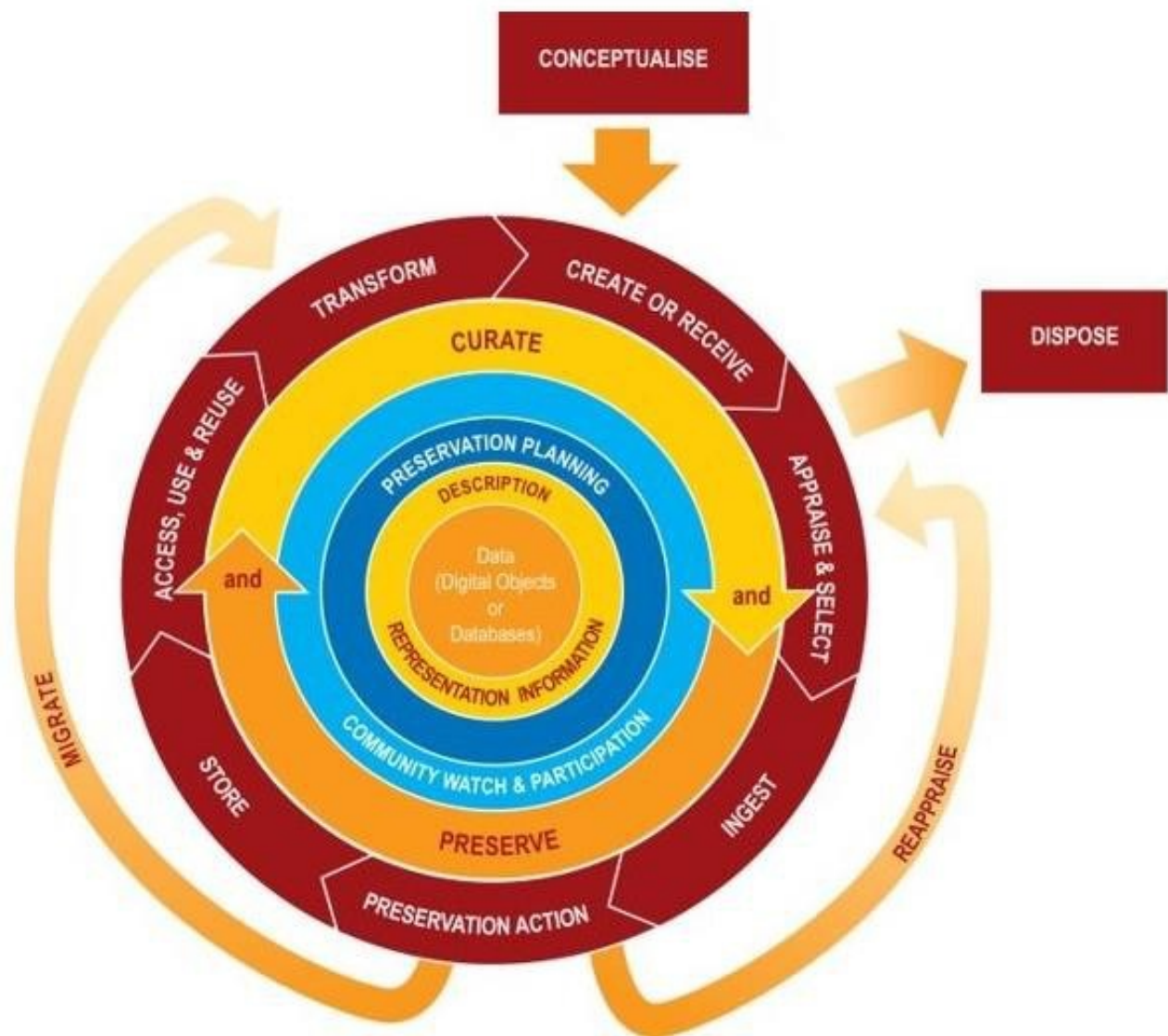


Research Support in Dutch Universities: TU Delft Library's Research Support Portal


/ RESEARCH SUPPORT PORTAL
FEEDBACK

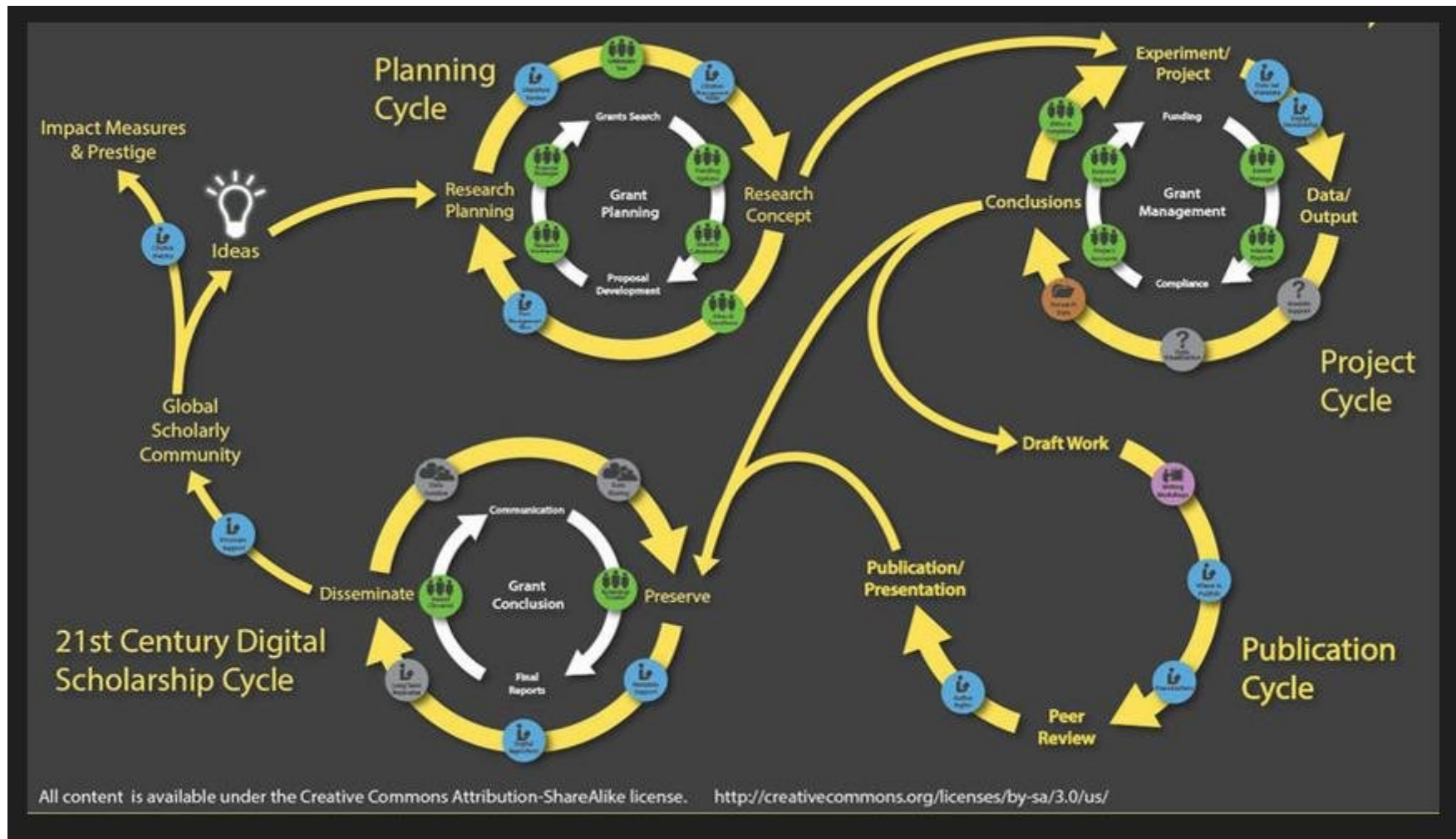
I am looking for
Q

 IDEA GENERATION	Online collaboration	Make your Data Management Plan	Make your Data Management Plan <p>Why? A data management plan will help you to properly manage your data for your own use and reduces the risk of data loss or of the threats to data through software obsolescence over time. A data management plan describes data generated or used for a given project and states how that data will be created, managed, stored, accessed, and shared during and after a research project.</p> <p>Moreover, many research funders (like Horizon 2020, NWO, etc.) expect you to comply with their requirements for formal management and sharing of your research results. You are asked to provide a data paragraph along with your proposal. When your project is granted you will <input type="text"/> to provide a full data management plan as an early deliverable.</p> <p>Download a Data Management Plan Template using the LINKS below.</p> <div> LINKS CONTACT COMMENTS HIDE </div> <p> Data Management Plan Template Guidelines on Data Management in Horizon 2020 Guidelines on Open Access to Scientific Publications and Research Data in Horizon 2020 More Information on Data Management Plan </p>
	Manage & archive your research data	Set-up a Data Lab	
 FUNDING	Get technical and laboratory support	Do it yourself - store your datasets	
	Get ICT support	Do it together - store data collections	
 EXPERIMENTATION	Organising events	Obtain a DOI for your datasets	
	Advice on patents	Publish your data in a data journal	
 PUBLISHING			



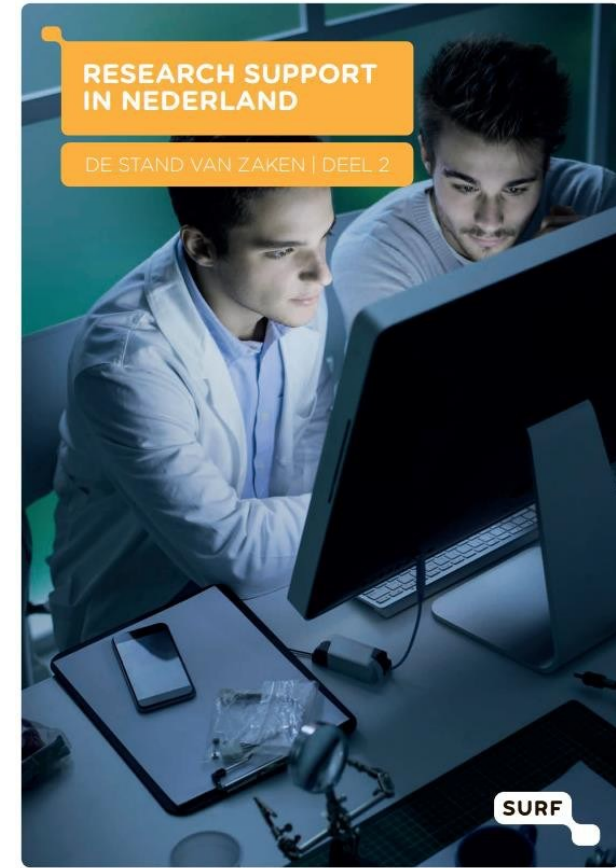
Data Curation model of
UK's Data Curation Centre

Univ of Florida Research Lifecycle



Research Support in Dutch Universities:

- Study by SURF (in 2016) on Support for Research including the chapter on TU Delft Research Support model.
<https://repository.tudelft.nl/record/uuid:0bbc2ab8-bf31-4a0b-b7b2-ef988ba49895>



Contents of this presentation:

About Research Support in Dutch Universities:

- Reorganizing services along research lifecycle
-  • Open science within research lifecycle: national approach → NPOS, SURF, UNL (VSNU)
- Digital Competence Centers (DCCs & TDCCs)
- How do universities (libraries) organize research support for open science

About Research Support at Leiden University:

- Leiden Research Support (Network, Offices)
- Leiden Digital Competence Center (LDCC)
- Centre for Digital Scholarship & Research Data Management
- What's on a horizon - Open Publishing Policy and implementation; Barcelona Declaration

NPOS – (Netherlands) National Plan Open Science 2017

& Open science within the research lifecycle



The key ambitions are:

- ➔ **Full open access to publications in 2020**
Continue the Dutch approach for all Dutch research organisations and research areas whilst recognising their differences and similarities.
- ➔ **To make research data optimally suited for reuse**
To set clear and agreed technical and policy-related preconditions to facilitate reuse of research data, including provision of the necessary expertise and support.
- ➔ **Recognition and rewards**
To examine together how open science can be an element of the evaluation and reward system for researchers, research groups and research proposals.
- ➔ **To promote and support**
To establish a 'clearing house' for all information regarding all available research support.

Ambition 4: 1) “to create a broadly supported portal for researchers and support staff”. All information concerning the available research support should be readily accessible in this ‘clearing house’. This requires organized cooperation and multi-faceted approach among research support staff.
2) “to make discipline-specific agreements concerning the development of research support.

https://pure.tudelft.nl/ws/portalfiles/portal/11203564/National_Plan_Open_Science_The_Netherlands_February_2017_EN_.pdf

Contents of this presentation:

About Research Support in Dutch Universities:

- Reorganizing services along research lifecycle
- Open science within research lifecycle: national approach → NPOS, SURF, UNL (VSNU)
- • **Digital Competence Centers (DCCs & TDCCs)**
- **How do universities (libraries) organize research support for open science**

About Research Support at Leiden University:

- **Leiden Research Support (Network, Offices)**
- **Leiden Digital Competence Center (LDCC)**
- **Centre for Digital Scholarship & Research Data Management**
- **What's on a horizon - Open Publishing Policy and implementation; Barcelona Declaration**

Digital Competence Centers in the Netherlands

- NWO initiative to fund Digital Competence Centers – DCCs (kick-start funding)
 - 2020 Local Digital Competence Centers – Local DCCs
 - 2022 Thematic Digital Competence Centers – TDCCs

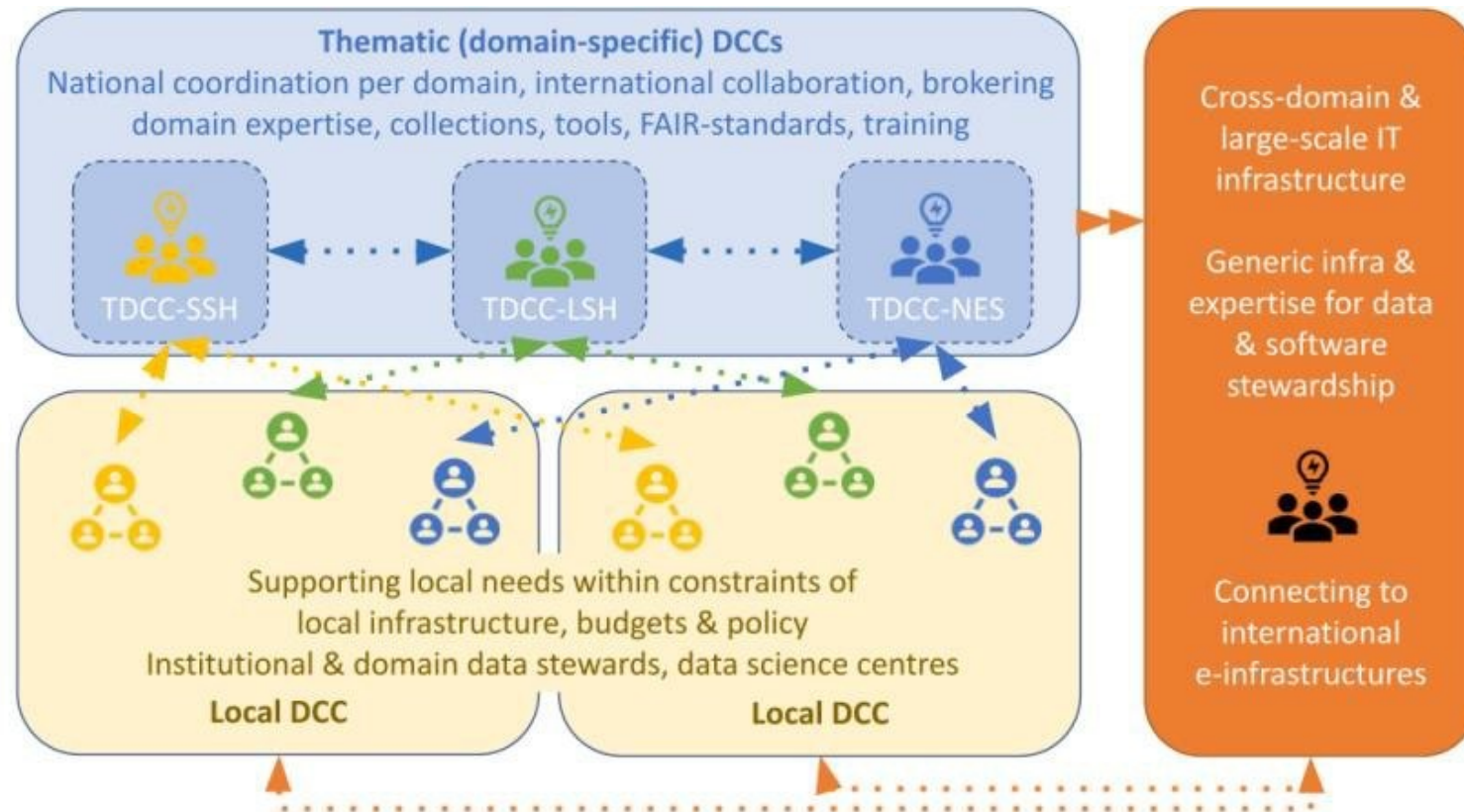
Excellent research increasingly depends on computer- and digital skills. Being able to share and use each other's data, designing smart algorithms that analyze experimental data and can subsequently input these into a supercomputer – researchers from all disciplines, make increasing use of computers and digital skills. In response to this, institutes and universities have set up Digital Competence Centers (local DCCs).

DCCs are virtual network organizations, and many (but not all) are embedded within the central library, or in the IT department and/or the Research Support Office.’ (in Leiden within SAZ – BB – IM department).

The **DCCs** have established an **implementation network** within the National Coordination Point Research Data Management ([LCRDM](#)). This is housed at SURF and brings together research support staff, policymakers, ICT specialists and managers from a variety of research institutions and research funding bodies. This is organized by LCRDM, which facilitates the collaboration between different stakeholders.



Thematic Digital Competence Centers in the Netherlands



3 Roadmaps, each with Bottleneck projects and Challenge projects.

TDCC-NES Bottleneck Projects

TDCC-NES Challenge Projects

1. Social Sciences & Humanities (SSH),
2. Natural and Engineering Sciences (NES)
3. Life Sciences & Health (LSH).

TDCCs are network-based initiatives set up by NWO and the Dutch academic community to broker investments into open science **projects**. The three TDCCs are **national** and **discipline based**. In the coming 5-10 years, the network will formulate and fund projects designed to promote the **adoption of open data, software and research practices**, alongside the development of the necessary **expertise**.

An impression of the Project ideas for the TDCC's Challenge projects:

TDCC-SSH Challenge Projects			
	Time of online presentation		
<u>Artwork Interviews Made FAIR (AIM FAIR)</u>	12 June 2024, 09.00-09.30	<u>FAIR record linkage for a scattered data landscape</u>	12 June 2024, 13.30-14.00
<u>Creating a repository of variables from survey data</u>	12 June 2024, 09.30-10.00	<u>SYNOPSIS 1.0: Synergy Platform for Integrating Audiovisual Data Archiving & Analytics for the Social Sciences.</u>	12 June 2024, 14.00-14.30
<u>TSH - Bringing Open Science to life: Empowering academics</u>	12 June 2024, 10.00-10.30	<u>Peer-to-peer skills building in scholarly communication</u>	12 June 2024, 14.30-15.00
<u>Towards FAIRifying legal software for data extraction, exploration, and annotation</u>	12 June 2024, 11.00-11.30	<u>Identifying and indexing multimodal and artistic research outputs for interoperability and re-use: towards a community of practice for non-textual data (3i).</u>	12 June 2024, 15.00-15.30
<u>Towards a Modular Infrastructure for Comprehensive RDM</u>	12 June 2024, 11.30-12.00	<u>Stories of Arrival: Amsterdam Diaries (STAD)</u>	12 June 2024, 16.00-16.30
<u>Establishing a Linked Open Data Ecosystem Integrating Community, Technology and Literacy to Support the Digital Heritage Landscape in the Netherlands</u>	12 June 2024, 12.00-12.30	<u>Twixl 2.0 - Extending Possibilities for Cross-Media Research in the Netherlands</u>	12 June 2024, 16.30-17.00
<u>RIGHTS: Responsible Implementation of Gathering, Handling, and Treating Sensitive Individual Digital Traces</u>	12 June 2024, 13.00-13.30	<u>A Music Data Hub - FAIR data for Musicology</u>	12 June 2024, 17.00-17.30

Contents of this presentation:

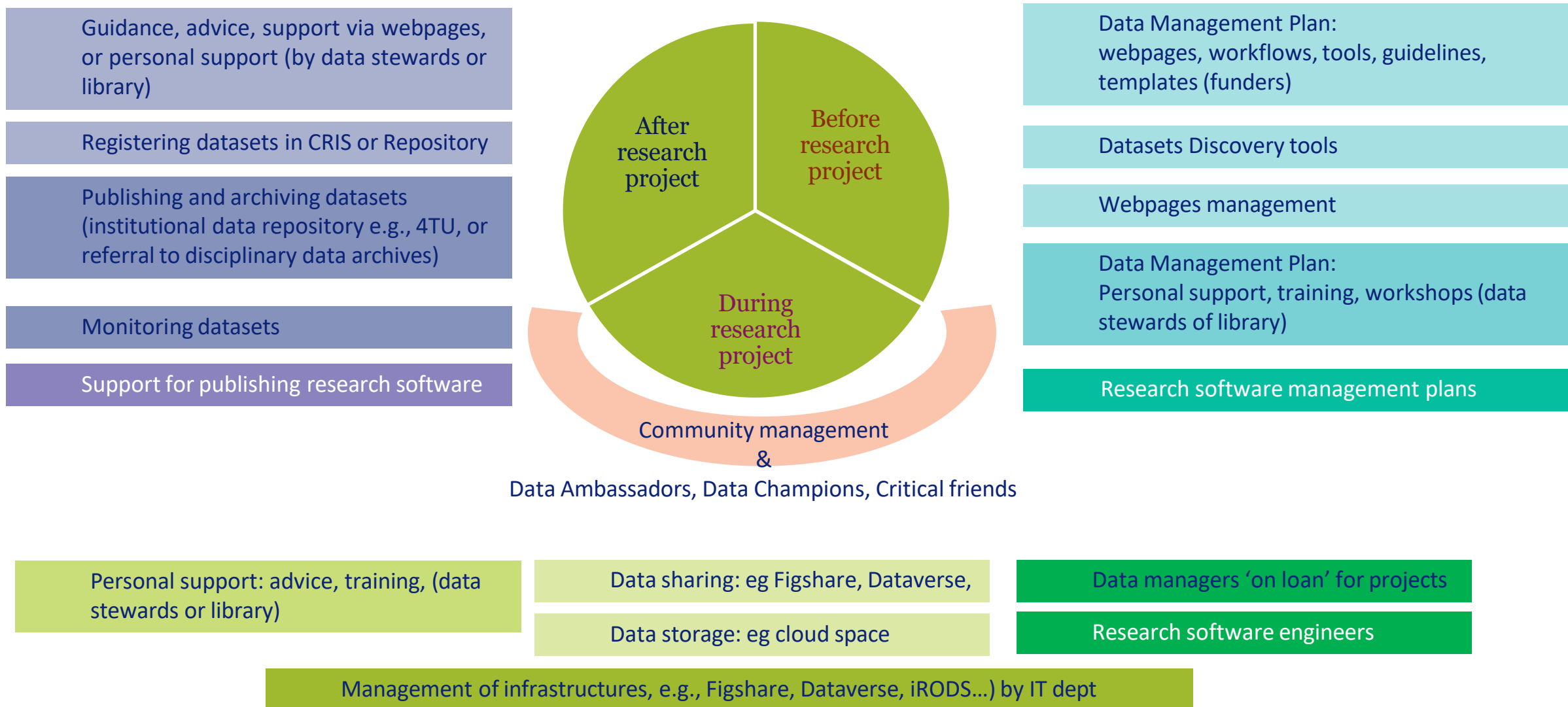
About Research Support in Dutch Universities:

- Reorganizing services along research lifecycle
- Open science within research lifecycle: national approach → NPOS, SURF, UNL (VSNU)
- Digital Competence Centers (DCCs & TDCCs)
- ➔ • **How do universities (libraries) organize research support for open science**

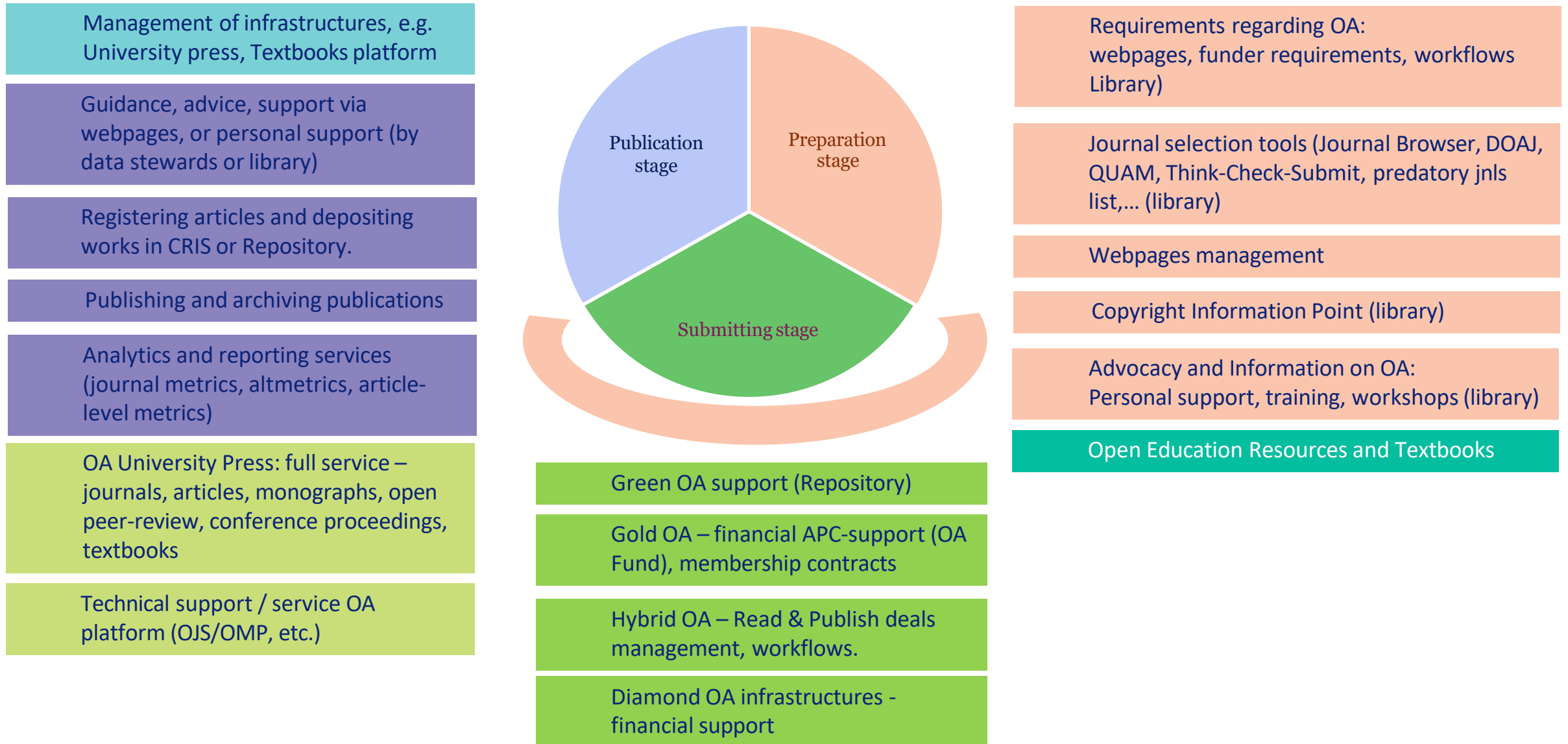
About Research Support at Leiden University:

- **Leiden Research Support (Network, Offices)**
- **Leiden Digital Competence Center (LDCC)**
- **Centre for Digital Scholarship & Research Data Management**
- **What's on a horizon - Open Publishing Policy and implementation; Barcelona Declaration**

RDM lifecycle infrastructure & services



Open Access infrastructures & services



Contents of this presentation:

About Research Support in Dutch Universities:

- Reorganizing services along research lifecycle
- Open science within research lifecycle: national approach → NPOS, SURF, UNL (VSNU)
- Digital Competence Centers (DCCs & TDCCs)
- How do universities (libraries) organize research support for open science

About Research Support at Leiden University:

- 
- **Leiden Research Support (Network, Offices)**
 - **Leiden Digital Competence Center (LDCC)**
 - **Centre for Digital Scholarship & Research Data Management**
 - **What's on a horizon - Open Publishing Policy and implementation; Barcelona Declaration**

How does Leiden University organize its research support for open science

LEIDEN RESEARCH SUPPORT (LRS)



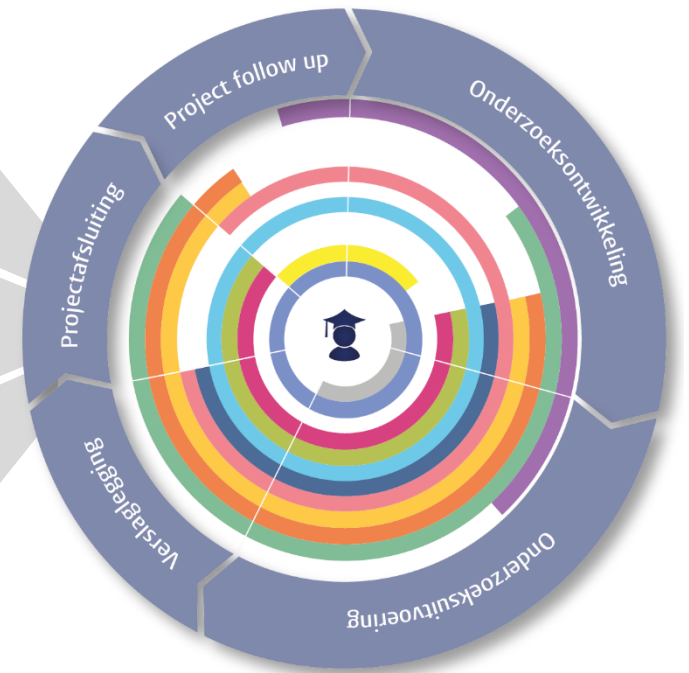
1. Effective and efficient collaboration within research support



2. Building and securing funding opportunities



3. Compliance with laws and regulations, codes of conduct and requirements of funders



How does Leiden University organize its research support for open science



Research Support Portal



Select Discipline

Administration and Central Services



Select Support Area

Support Area



Select Research Phase

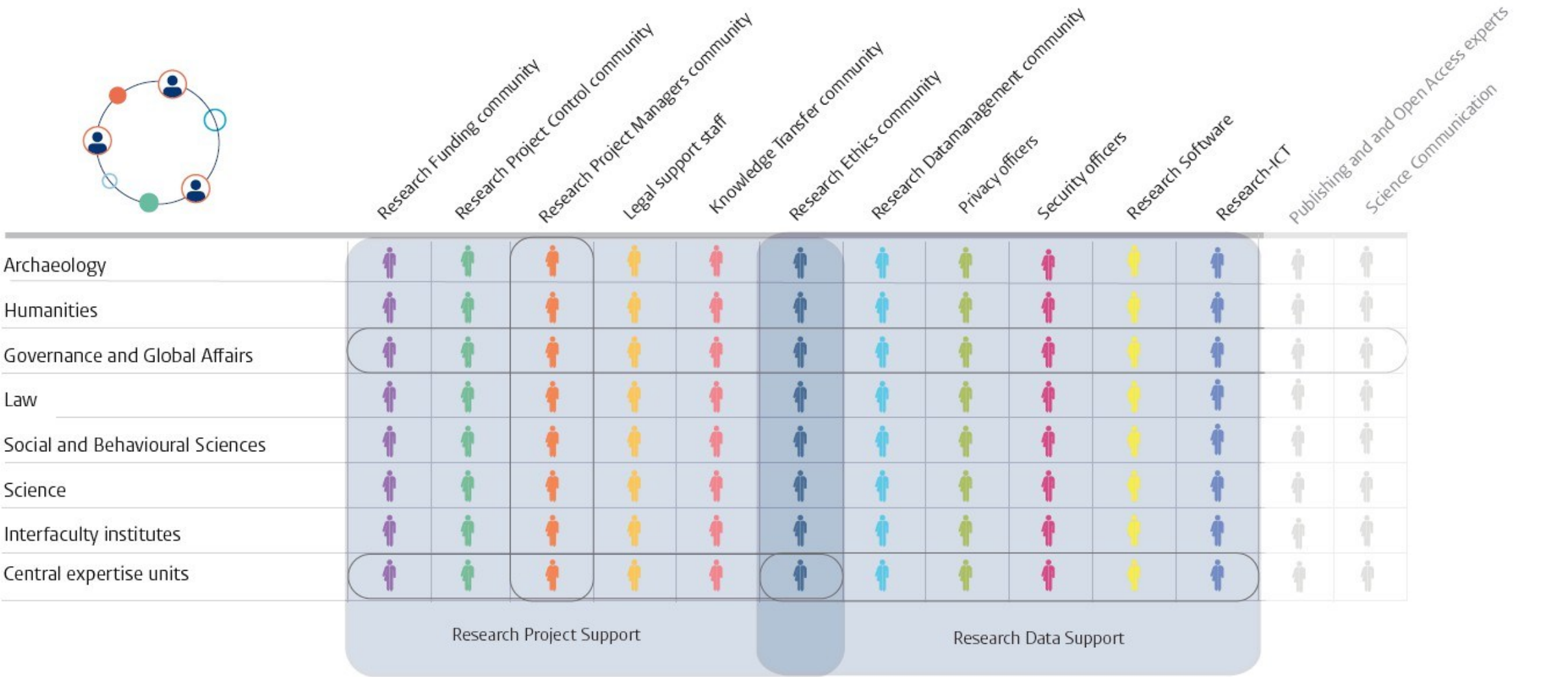
All research phases



Go

www.researchsupport.universiteitleiden.nl

Leiden Research Support Network



How does Leiden University organize its research support for open science

HOW IT WORKS

Local
Research
Support
Office of
Archaeology



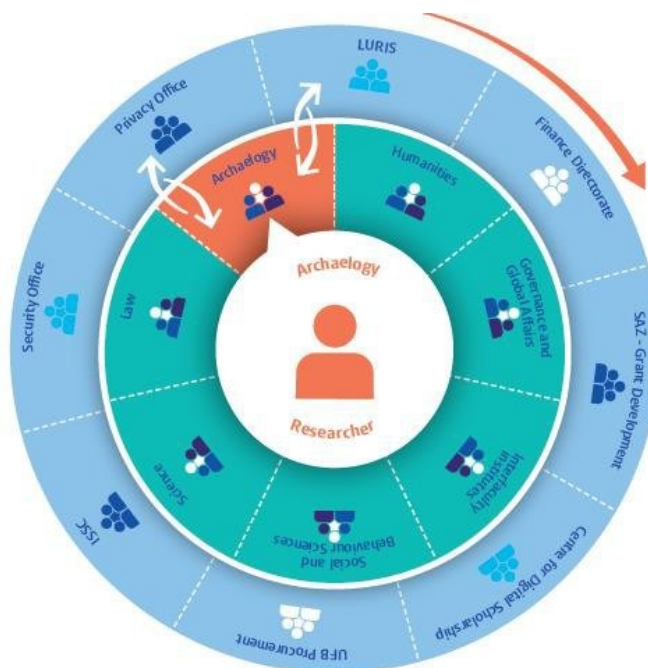
1 Researcher Archeology has a research question and contacts the local Research Support Office of Archaeology.



2 1st and 2nd lines of support coordinate efforts to support researchers.



3 Research Support Professionals work together across faculties



RESEARCH SUPPORT NETWORK

Support domains are organized in communities that work closely together. In this way you always get the best possible expertise:

Research Project Support

- Research Funding community
- Research Project Control community
- Research Project Managers community
- Legal support staff
- Knowledge Transfer community
- Research Ethics community

Research Data Support

- Research Data Management community
- Privacy officers
- Security officers
- Research Software Engineers
- Research-ICT

Contents of this presentation:

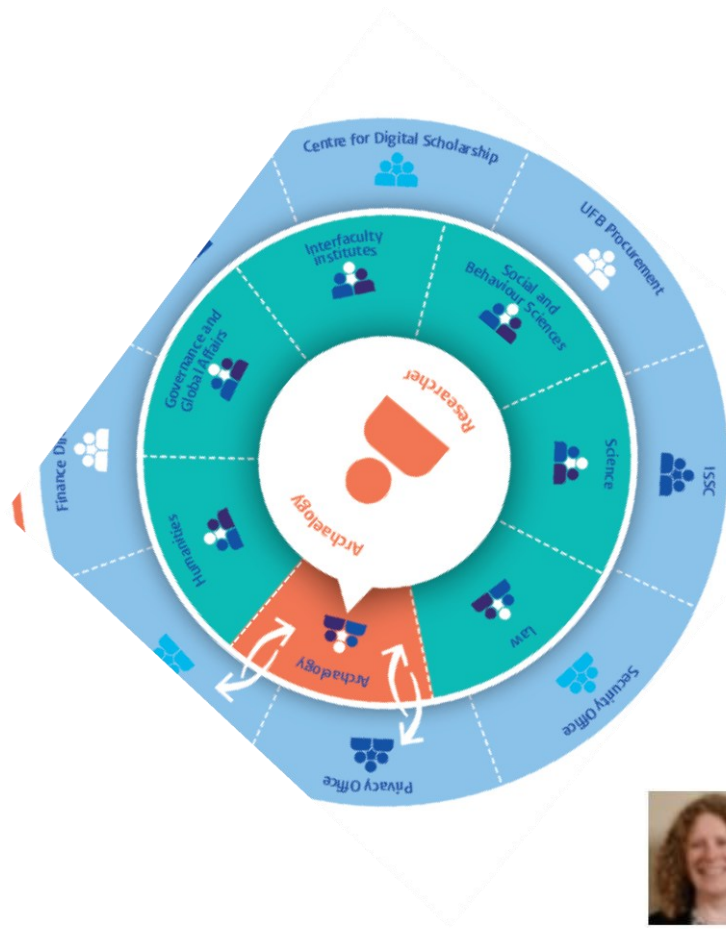
About Research Support in Dutch Universities:

- Reorganizing services along research lifecycle
- Open science within research lifecycle: national approach → NPOS, SURF, UNL (VSNU)
- Digital Competence Centers (DCCs & TDCCs)
- How do universities (libraries) organize research support for open science

About Research Support at Leiden University:

- Leiden Research Support (Network, Offices)
- Leiden Digital Competence Center (LDCC)
- • **Centre for Digital Scholarship – expertise areas:**
 - **Research Data Management - Status quo at Leiden University Libraries**
 - **Open Access**
 - **Copyright Information Point**
 - **Use of Digital Data**
- **What's on a horizon - Open Publishing Policy and implementation; Barcelona Declaration**

Centre for Digital Scholarship = expertise center



Femmy Admiraal
Digital Scholarship Librarian



Fleur Praal
Scholarly Communications Librarian



Kristina Hettne
Digital Scholarship Librarian



Ben Companjen
Digital Scholarship Librarian



Pascal Flohr
Digital Scholarship Librarian



Peter Verhaar
Digital Scholarship Librarian



Tessa de Roo
Digital Scholarship Librarian



Erna Sattler
Copyright Expert



Heleen Palmen
Coordinator Open Access



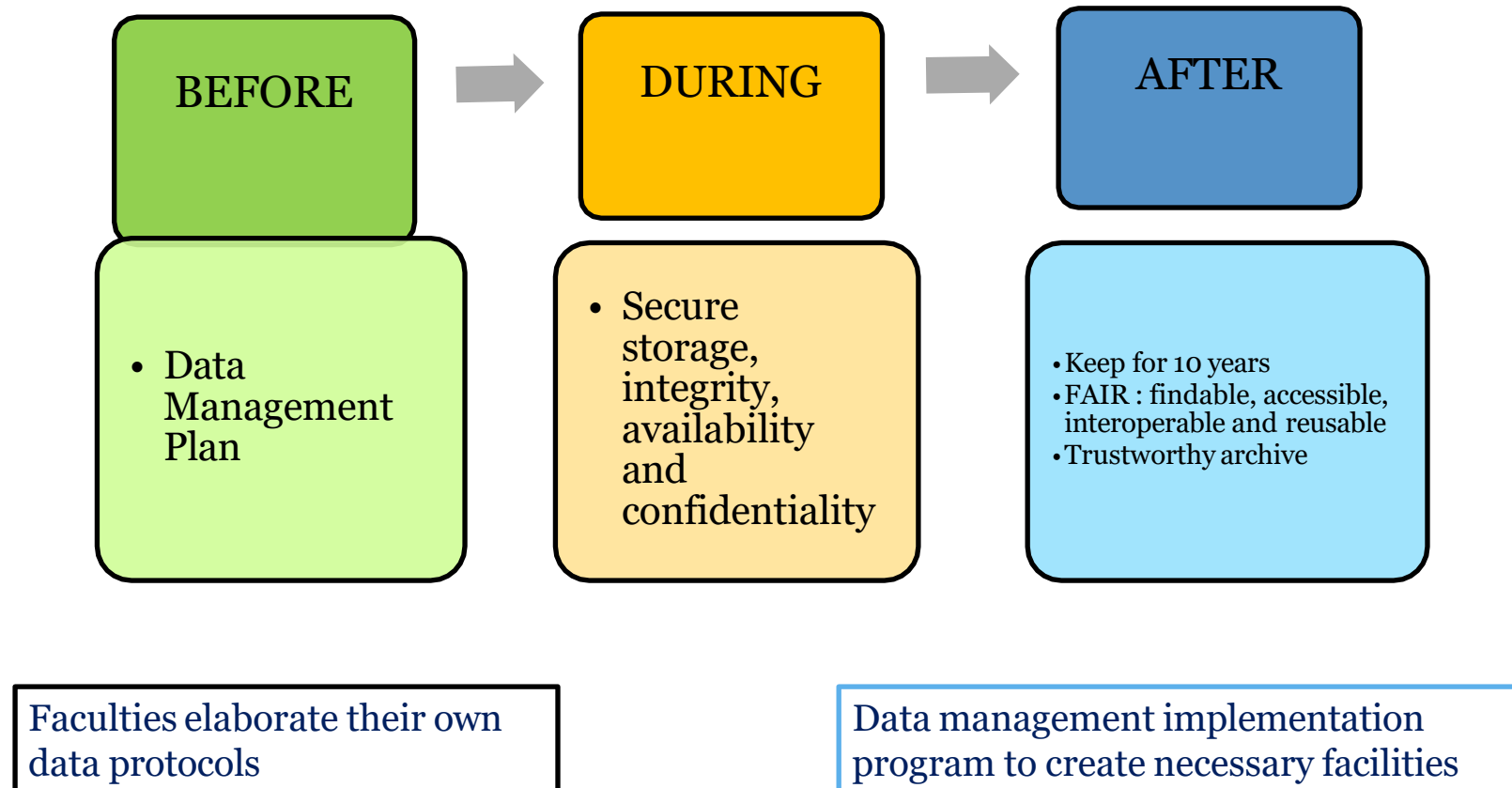
Alenka Princic
Head Centre for Digital Scholarship

Open Access, Research Data Management, Software Management, Use of Digital Data, Copyright, Open Science

Expertise area: Research data management

- Research Data Management (RDM) policy
- RDM services Centre for Digital Scholarship
 - Training
 - Data Management Plan (DMP) Services
 - Questions and advice
 - Research Services Catalogue
 - Data Management Network
- Building further and professionalizing Research Support for RDM
 - Projects
 - Networks
 - Leiden Research Support
 - Leiden Digital Competence Center
 - Professionalizing Data Stewardship

Regulations Data Management (2016; revision 2021)



<https://www.staff.universiteitleiden.nl/announcements/2022/03/new-data-management-regulations-for-leiden-university>

Research data management support at CDS

- Training and workshops
 - Tailor-made RDM training for PhD students
 - Workshop 'How to write a DMP', open to all employees
 - FAIRification workshops
 - Data / Software carpentries
 - Many lectures and workshops on demand
- DMP advice/consultation: help with writing data paragraphs and DMPs for grant applications and new projects
- Information: website, blog, reference materials, services catalogue, mailbox



DMP Services / Consultation

National funders require that researchers consult data management expert at their institution

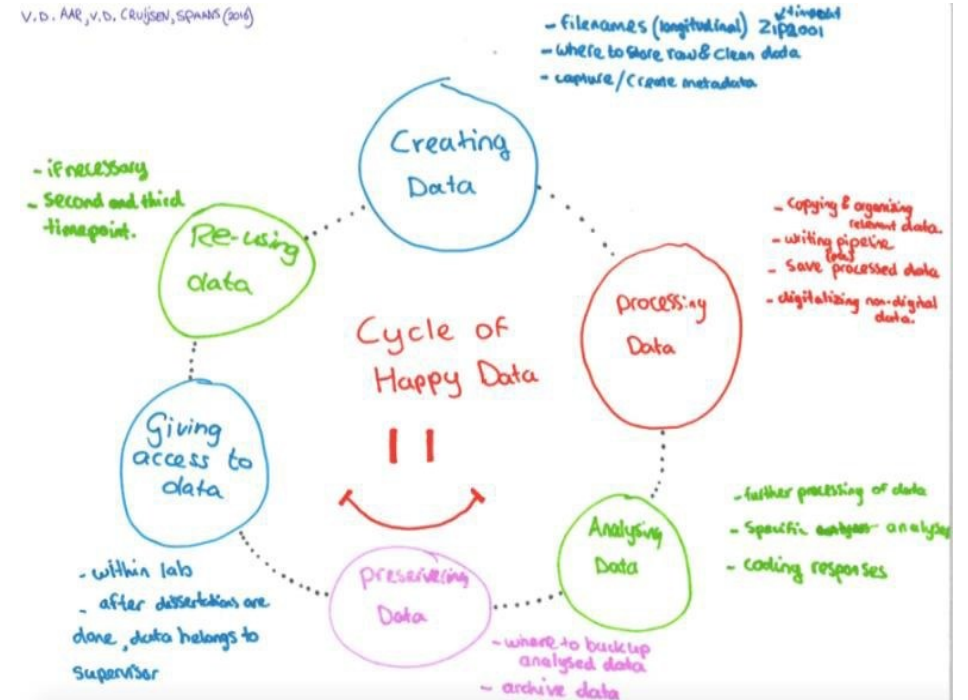
Leiden Researchers can use the Leiden DMP template to write a DMP for national funders [ZonMW](#) and [NWO](#)



https://www.scienceeurope.org/media/jezkhnoo/se_rdm_practical_guide_final.pdf

Tailor-made training for PhD students

- In collaboration with senior researcher(s) and faculty data stewards
- Presentations, demonstrations, homework
- Hands-on exercises
 - Design your own data life cycle
 - How FAIR is data underlying publication
 - Informed consent
 - Anonymizing data, etc.
- Students present their DMP
- Participants can register course for ECTS credits



Research Data Services Catalogue

Leiden University ResearchDrive

Last updated: 3 April 2020 at 10:06.

A working group cloud storage service to securely store, synchronise and share files from various external file systems, such as local file servers, SURFdrive, Dropbox, and Google Drive, whilst accessing the total environment from one common workspace.

General information

Type of service: Cloud storage, Data storage

Service homepage:

<https://universiteit.leiden.data.surfsara.nl/index.php/login>

Provider: SURF

Provider homepage: <https://www.surf.nl/en/research-drive-securely-and-easily-store-and-share-research-data>

Provides end-user support: supported

Administrative information

Data curation strategy: None

Metrics: Unknown

Funding source: Leiden University

Intellectual property: Leiden University

User agreement: Service agreement with Leiden University.

Contact: b.van.dijk@issc.leidenuniv.nl

Target group

Target audience(s): Faculty of Archaeology, Faculty of Governance and Global Affairs, Faculty of Humanities, Faculty of Law, Faculty of Medicine/Leiden University Medical Center, Faculty of Science, Faculty of Social and Behavioural Sciences



Useful information for researchers:

- ☐ Which services can I use during the various stages of my research project?
- ☐ Which services are suitable for my discipline?
- ☐ Which services adhere my institutions data management policy?

<https://digitalscholarship.nl/rds/service/>

Community building

Leiden University Data Management Network

All University staff involved or interested in research data management is invited to join Leiden University Data Management Network.

GET TO KNOW THE
Data Management community

DATA STEWARDS AT THE FACULTIES / INSTITUTES

"DIGITAL SCHOLARSHIP LIBRARIANS" AT THE CENTRE FOR DIGITAL SCHOLARSHIP (LIBRARY)

OTHERS: RESEARCH ICT, PRIVACY OFFICERS, INTERESTED RESEARCHERS, AND MORE

WHAT WE DO

- ADVICE ON DATA MANAGEMENT
- TRAINING IN DATA MANAGEMENT
- DATA MANAGEMENT PLAN CONSULTATION
- POLICY: WRITING FACULTY DATA PROTOCOLS
- ORGANISING EVENTS AND WORKSHOPS
- TAKING PART IN (RESEARCH) PROJECTS

HOW DO WE SUPPORT EACH OTHER

- MONTHLY 'DATA STEWARD' MEETINGS
- MONTHLY ONLINE 'CONNECT &' EVENT
- DATA MANAGEMENT COMMUNITY IN TEAMS & A DATA STEWARDS CHANNEL
- SUPPORTING EACH OTHER WITH ADVICE AND HELP WITH TRAINING

UPCOMING EVENTS

- 10-14 JUNE | CDS SUMMER TRAINING WEEK
- 13 JUNE | CONNECT & DISCOVER
- NOVEMBER | DATA REUSE WORKSHOP

COMMUNITY MANAGER

PASCAL FLOHR
P.FLOHR@LIBRARY.LEIDENUNIV.NL

QUESTIONS?



<https://www.library.universiteitleiden.nl/researchers/data-management/leiden-university-data-management-network>

Research data management support anno 2024

1st line: local support at the faculty

Data Stewards, Data Managers

- Close proximity to the researchers with discipline-specific expertise
- Advise and provide information and training
- Proactively approach researchers
- Develop faculty/institute protocols

2nd line: central support staff

Data Management Experts@CDS

- Generic knowledge and pooled expertise
- Training and support for all researchers
- Support and training for 1st line staff (also taking forward complex questions)
- Coordinating policy across the university and with national/international counterparts & coordinating thematic networks



1st line faculty support - full list of data stewards by institute/faculty: <https://www.staff.universiteitleiden.nl/ict/help-and-support/helpdesks-and-contact/data-stewards/>

2nd line: Centre for Digital Scholarship: datamanagement@library.leidenuniv.nl; Femmy Admiraal, Kristina Hettne, Pascal Flohr

RDM: some data support roles in more detail



Data Manager
Data Steward Social Sciences
Data Steward Political Sciences
Data Steward
Data Steward



Policy officer research data
Information manager
Consultant ICT
Lab manager



Research Data and Information
Manager

Roles at CDS: **Research Data Experts** 2,4 FTE

RDM coordinator, Data librarian / Generic Data Steward, Community Manager Research Data

<https://www.medewerkers.universiteitleidennl/ict/hulp-en-ondersteuning/helpdesks-en-contactpersonen/data-stewards/bestuursbureau-expertisecentra/universitaire-bibliotheken-leiden?cf=bestuursbureau-expertisecentra&cd=universitaire-bibliotheken-leiden>

Research Data Management support at Leiden University: Landscape Analysis - Survey

Centre for Digital Scholarship, Leiden University
Hannah DeLacey & Femmy Admiraal

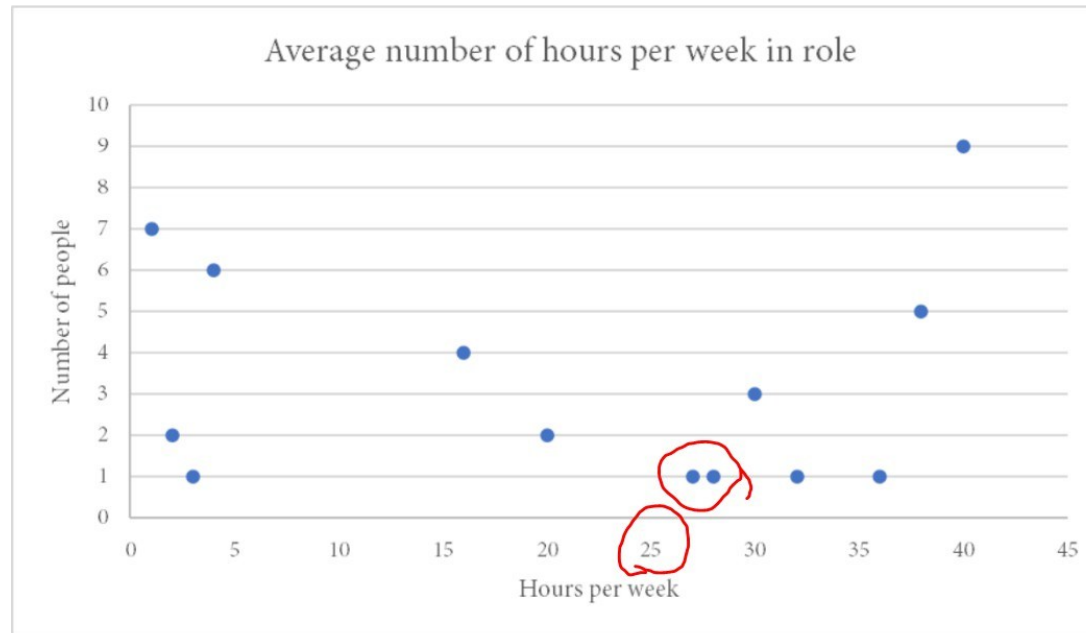


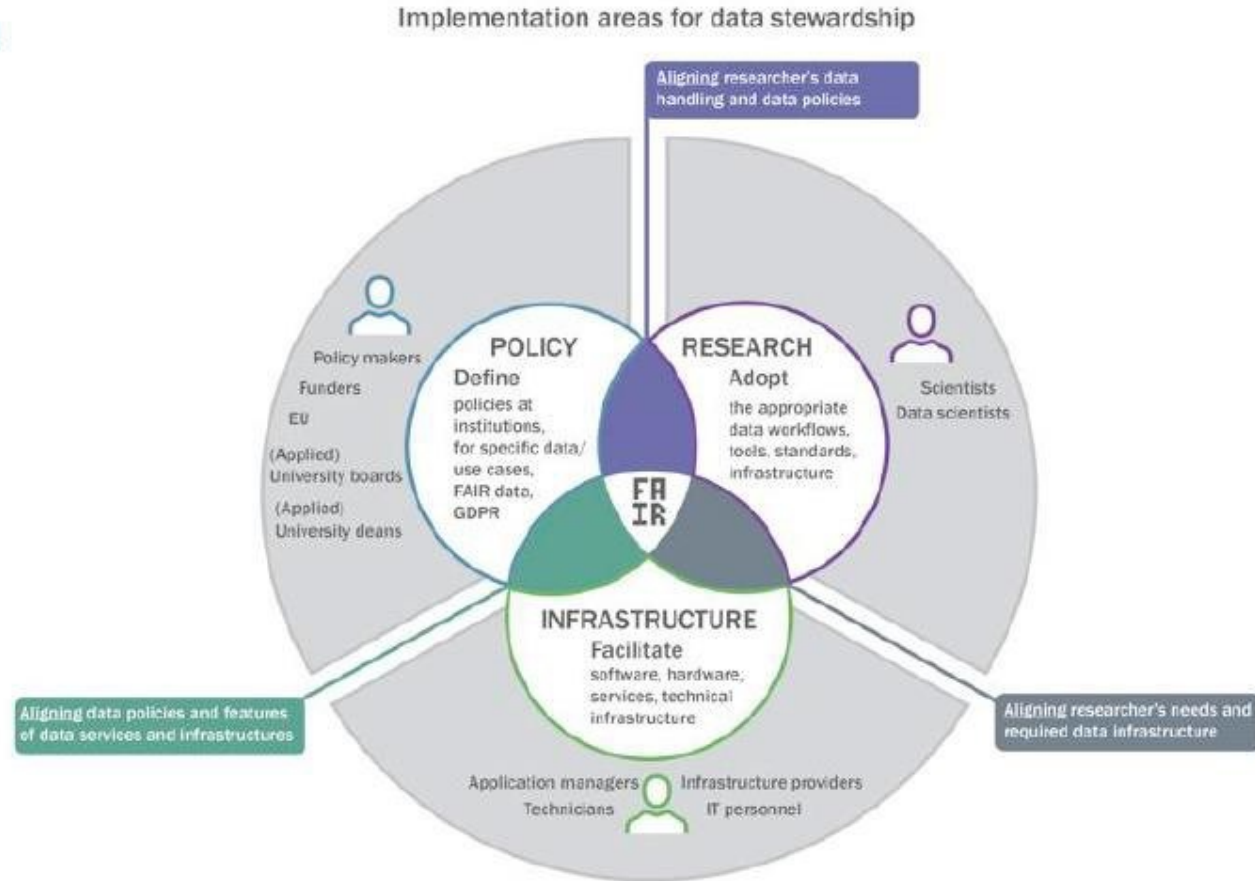
Figure 2: Average number of hours per week in RDM support role (N=44/50).

Professionalising data stewardship

Data stewards come in many flavours!

Knowledge areas

- Policy / strategy
- Compliance
- Alignment with FAIR
- Services
- Infrastructure
- Knowledge management
- Networking
- Data archiving
- (soft skills)



<https://zenodo.org/record/34747895>

Professionalising data stewardship

Universities now have an official job profile for data stewards.

The CDS contributed to this body of literature on data stewardship in the Netherlands:

- Professionalising data stewardship in the Netherlands. Competences, training and education. Dutch roadmap towards national implementation of FAIR data stewardship. Nationaal Plan Open Science project. (185 pages) <https://zenodo.org/record/4623713>
- Data Stewardship on the map: A study of tasks and roles in Dutch research institutes. Report of National Coordination Point Research Data Management. <https://zenodo.org/record/2669150>
- Towards FAIR data steward as profession for the life sciences. ZonMW-funded report. <https://zenodo.org/record/34747895>

Technical competence areas related to RDM library services

Knowledge about the structures of higher education and about how research and researchers work (a background in research might be required)

Composition of research datasets
Data policies (institutional, funder, national)
FAIR data principles
Data life cycle
Data Management Plans
Research integrity, ethics and GDPR regulations
Pseudonymization and anonymization of data
Knowledge of the landscape of data repositories and data archives
Metadata of datasets

Data creation and interoperability
Searching data sources

Metadata for digital collections and datasets

Institutional infrastructures for storing and saving data

Knowledge about cleaning data
Data curator competences (related to (2) and (10))

Data analysis and visualisation

Archiving and preserving data

Copyright and intellectual property
Licensing of research datasets
Reproducibility and reuse of data
Data discovery tools

Source: DOI [10.5281/zenodo.8060242](https://doi.org/10.5281/zenodo.8060242)

Personal competences & soft skills for RDM support professionals

- Communication skills (including a certain robustness when encountering resistance/reluctance from researchers)
- Advisory skills
- Pedagogical competences
- Service orientation
- Ability to translate practical issues into protocols, services, and policies
- Connecting role, ability to build and maintain/manage networks

Source: DOI [10.5281/zenodo.8060242](https://doi.org/10.5281/zenodo.8060242)



RDM service: Consultancy and collaboration



LE
RU

Leids Universitair
Medisch Centrum

Landelijk
Coördinatiepunt
Research Data
Management

rdnl
research
data
netherlands

UKB

Knowledge Exchange

RDA
RESEARCH DATA ALLIANCE

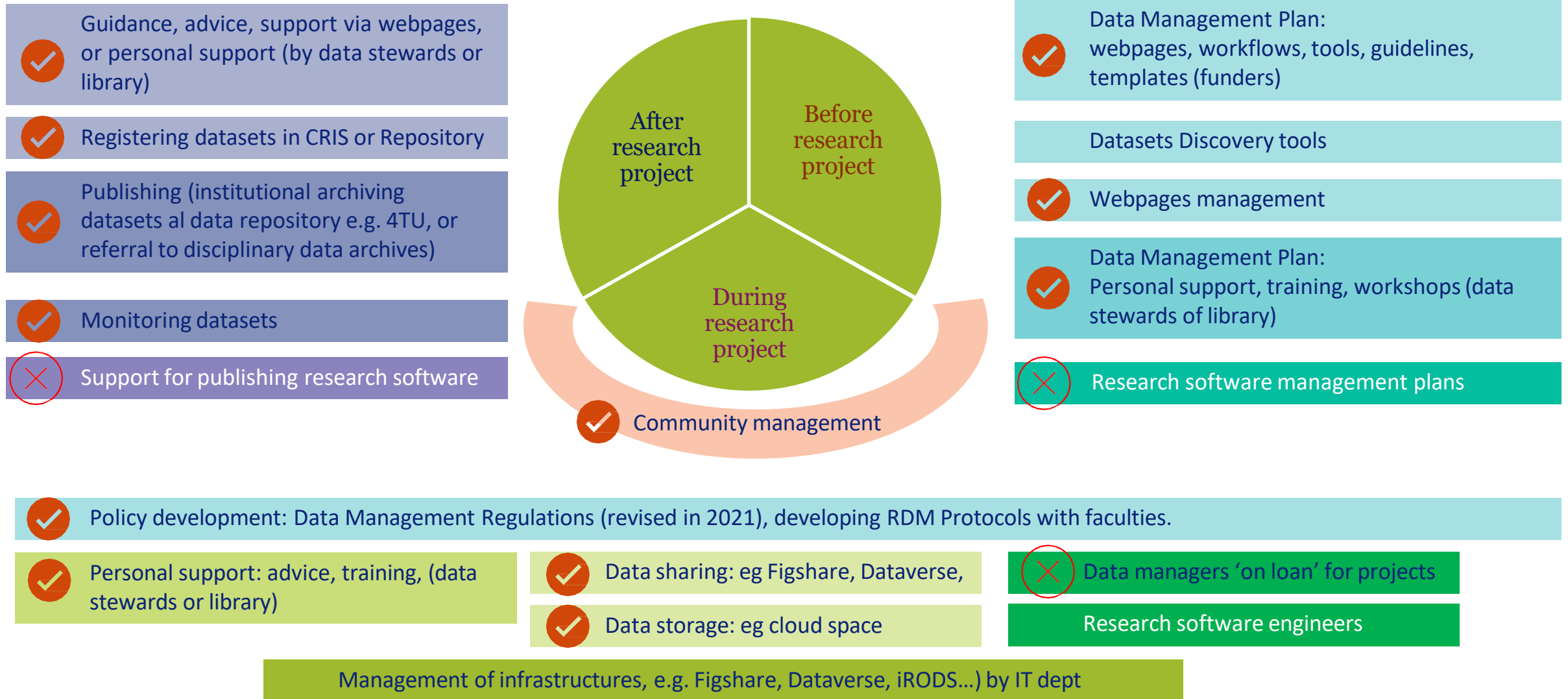
nationaal
plan
open
science

REGIEORGAAN
OPEN
SCIENCE
NL

- Advise faculties and institutes on protocols and facilities
- Consultancy projects on FAIRifying data from research groups
- (Inter)national collaboration & projects:
UKB WG Research Data,
LCRDM,
Research Data Alliance,
Knowledge Exchange,
National Platform Open Science,
GO FAIR, etc..

GO FAIR

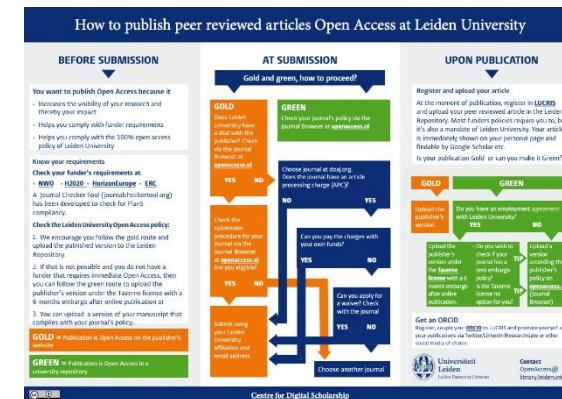
RDM lifecycle infrastructure & services – status quo at Leiden University



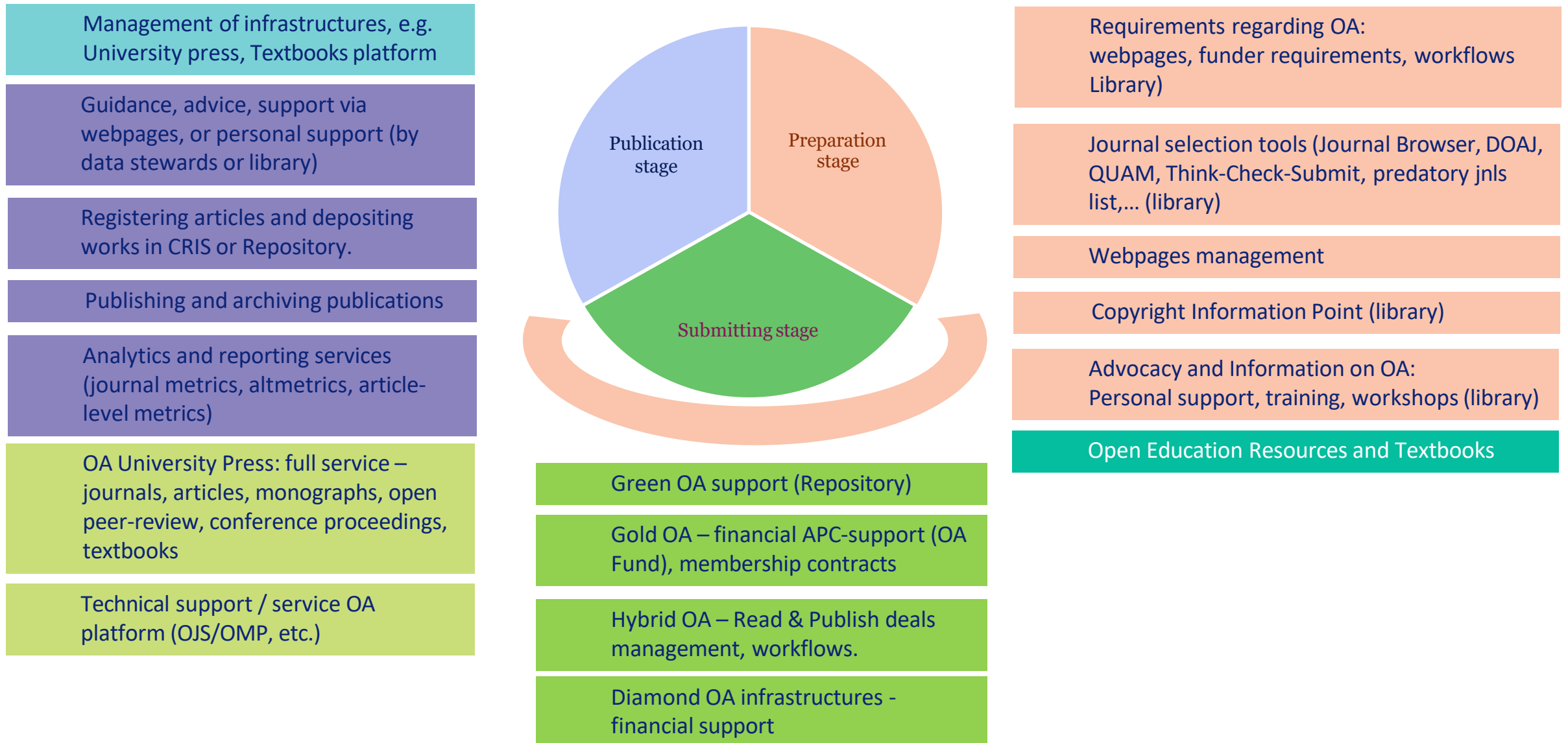
Expertise area: Open Access publishing & support at UBL / CDS

- ❑ Policy Leiden University: publish in open access
- ❑ Different ways to publish open access:
 - a) with a publisher check terms/conditions
 - b) upload a version in the Leiden Repository (embargo? which version?)
- ❑ Courses and workshops available
- ❑ CDS helps you choose and decide:
openaccess@library.leidenuniv.nl
- ❑ Website: <https://www.library.universiteitleiden.nl/researchers/open-access>

2,4 FTE



Open Access infrastructures & services - status quo at Leiden University



Expertise area: Copyright

0,6 FTE

- Copyright Information Office:
- Questions on copyright matters?
Contact us at
auteursrecht@library.leidenuniv.nl



By OpenClipart-Vectors, Pixabay License



By Mohamed Hassan, Pixabay License

<ul style="list-style-type: none"> ▼ Researchers <ul style="list-style-type: none"> Open Science > Open Access > Data management > Use of digital data ▼ Copyright Information Office <ul style="list-style-type: none"> Copyright basics Copyright and Brightspace Copyright and FeedbackFruits Copyright and web lectures Copyright on teaching materials Copyright for authors Copyright and your PhD thesis Plagiarism Terms of use licensed digital resources LUCRIS and Scholarly Publications Submitting your PhD dissertation Manage your identity with ORCID Persistent identifiers: DOI Workplaces for researchers Leiden University Press Help on conducting a (systematic) review
--

Copyright Information Office

Copyright is important when writing, publishing or (re-)using academic publications. The Copyright Information Office helps Leiden University staff with copyright related questions.



Copyright basics

An introduction to copyright in an academic setting



Copyright for authors

Copyright is designed to protect you as the author of your work



Copyright for teachers

Presentations, web lectures, and digital learning environments

Copyright in practice

Copyright basics

Plagiarism

Linking to library resources

Terms of use licensed digital resources

For authors

Copyright for authors

Copyright and your PhD thesis

Submitting your PhD dissertation

Open Access

Copyright in teaching

Copyright and Brightspace

Copyright and FeedbackFruits

Copyright and web lectures

Copyright on teaching materials

Copyright matters: which matters?

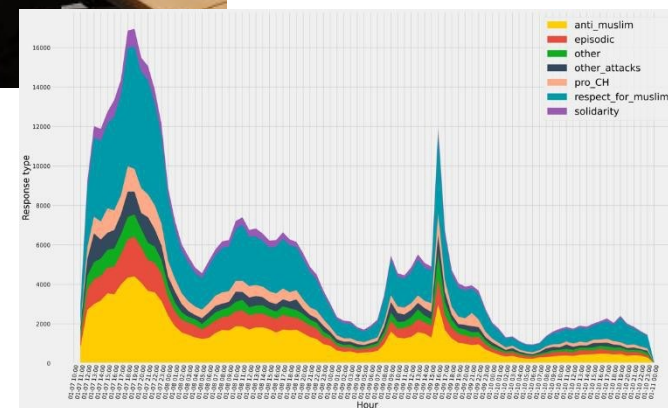
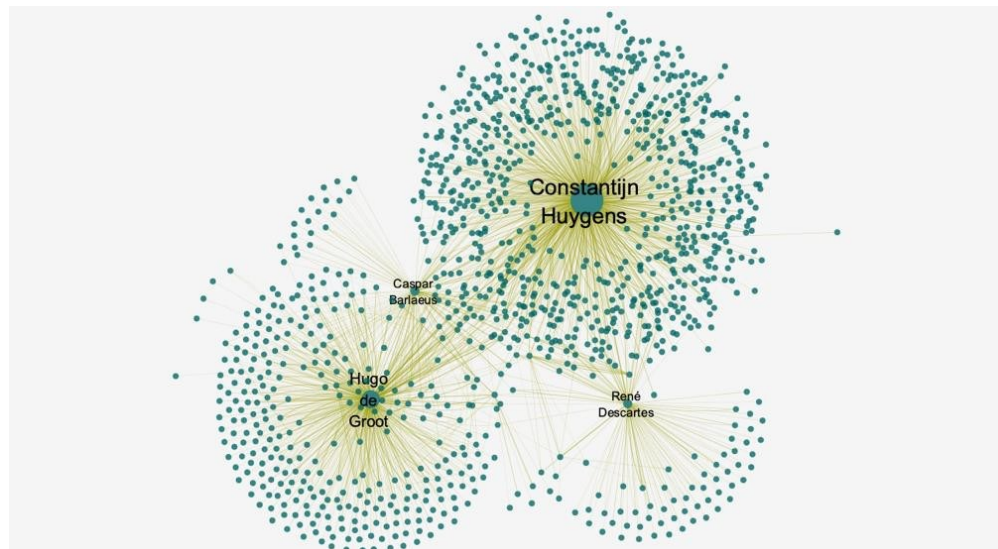
- General: duration of copyright, who owns copyright (employer or employee?), plagiarism, portrait right
- For researchers: reviewing contracts with publishers, copyright with TDM, meaning and use of Creative Commons licenses, use of images in publications, citation right
- For teachers: copyright with placing material on the electronic learning environment, copyright in using teaching tools, weblectures, placing publications, dissertations & theses in the Leiden repository, open educational resources
- For support staff: copyright in making collections available online

(INTER)NATIONAL NETWORKS

- National Network of copyright experts (AIPs/CIOs) at Dutch universities
- Legal Committee of National Network of Libraries (FOBID)
- Copyright Working Group of National Heritage Institutions
- Data Expert Group of LERU (League of European Research-intensive Universities)
- LIBER Copyright & Legal Matters Working Group

Expertise area: Use of Digital data

1,5 FTE




Expertise area: Research Software Support* at Leiden

Research Software Community Leiden

Search Dashboard Login or Signup


HOME ABOUT GUIDES INFRASTRUCTURES EVENTS BIBLIOGRAPHY



Leiden Research Software Accord

by Dan Rudmann, Ben Companjen, Femmy Admiraal, Céline Richard, Gerhard Burger, Lieke de Boer, Katie Hudson, Vincent Traag, and 17 more

Published: Mar 21, 2024




Glossary for Research Software

by Dan Rudmann, Andrew Hoffman, and Peter Verhaar

Published: Apr 18, 2023

A Lexicon of Foundational Definitions



Research Software Management Workflow

by Dan Rudmann

Published: Oct 11, 2022

An in-process sketch of stages and elements to consider when managing software for research

CONNECTIONS

Comments (1): Dan Rudmann

Research Software Directory - eScience Center

Research Software Directory

Search or jump to...

Software Projects Organisations

Sign in

Improving the impact of research software

To promote the visibility, reuse and impact of research software, the Netherlands eScience Center has developed the Research Software Directory, a content management system tailored to software.

Discover Software

Register your Organisation

191 Software

199 Projects

189 Organisations

Contents of this presentation:

About Research Support in Dutch Universities:

- Reorganizing services along research lifecycle
- Open science within research lifecycle: national approach → NPOS, SURF, UNL (VSNU)
- Digital Competence Centers (DCCs & TDCCs)
- How do universities (libraries) organize research support for open science

About Research Support at Leiden University:

- Leiden Research Support (Network, Offices)
- Leiden Digital Competence Center (LDCC)
- Centre for Digital Scholarship – expertise areas:
 - Research Data Management - Status quo at Leiden University Libraries
 - Open Access
 - Copyright Information Point
 - Use of Digital Data



- **What's on a horizon - Open Publishing Framework and implementation; Barcelona Declaration**

What's on a horizon

- From Open Access towards Open Scholarly Communication
- Institutional strategic publishing framework, giving room to new forms of scholarly communication
- Towards open and inclusive open research infrastructures (Barcelona Declaration on Open Research Information)
- Continuous development and professionalization of support, thus becoming an integral part of a research – towards Open Science Hub

Fit-for-purpose We publish our work in ways that are fit-for-purpose. Depending on the nature of our work and the audiences that we aim to engage with, we may publish our work in a variety of different ways, for instance as an article in a peer-reviewed journal, as a preprint, as a book, as a policy report, as a blog post, etc. We may publish our work in Dutch, in English, and in other relevant languages.	Open We publish our work as openly as possible. We make our work, and ideally also the underlying materials (e.g., data and software), openly accessible without unnecessary delays. We foster open dialogues about our work (e.g., by sharing preliminary results and by supporting open peer review and other forms of open feedback) and try to improve our work based on what we learn from these dialogues. We do not give away the ownership of our work.
Sustainable We publish our work in ways that are sustainable. We support sustainable career trajectories for our academic staff by recognizing and rewarding their publishing activities. We recognize the cost of publishing. We support publishing models that are financially sustainable for all stakeholders involved.	Equitable We have a broader responsibility to contribute to equitable publishing models. To optimize the exchange of scientific knowledge, everyone in the world should ideally have the same possibilities to publish scientific work. We support publishing models that promote global equity in scholarly publishing.

The last slide 😊

While open science services (RDM, research software, and Open Access) in Leiden are in a developed to advanced stage, there are other aspects of open science that need developing of policies and services, such as research evaluation, rewards and recognition, citizen science. Open science services at Leiden need to make a steps **towards more integrated services** and support in open science.

We need to work together on:

- **Human potential**, invest in human capital & professional development; moving from Data Steward or Publishing Steward towards **Open Science Steward**.
- Bringing the services **closer to researcher**: Contact points for all support should be maintained at faculties or institutes.
- **Connecting** - A good connection between 1st and 2nd line support is important to be able to access all expertise within the demand-handling process. This is worked out within the domains.
- **Coordination** ('regie' in Dutch) through institutional and national bodies (OSNL, UNL).

Finally, libraries have rich experience with service provision. Libraries have been the very first advocate of open access, and later open science. Libraries are the place for curation of research output and managing collection. Libraries also expanded on their IT development capacities and set up their own IT departments. So, I would say **Power to the Librarian!**

Thank you!

Alenka Prinčič



Head of [Centre for Digital Scholarship](#) | [Leiden University Libraries](#) | Witte Singel 27 | 2300 RA Leiden |
The Netherlands | +31 6 1434 6498 | orcid.org/0000-0002-0203-8710 | a.princic@library.leidenuniv.nl |

Read our news and other posts on the **Blog:** digitalscholarship.leiden.nl



Universiteit
Leiden

Leiden University Libraries