

Preoperative intensity-modulated chemoradiation therapy with simultaneous integrated boost in rectal cancer: 2-year follow-up results of phase II study

Jasna But-Hadzic, Vaneja Velenik

Department of Radiotherapy, Institute of Oncology Ljubljana, Ljubljana, Slovenia

Radiol Oncol 2018; 52(1): 23-29.

Received: 8 September 2017
Accepted: 17 September 2017

Correspondence to: Assoc. Prof. Vaneja Velenik, M.D., Ph.D., Institute of Oncology Ljubljana, Zaloška 2, SI-1000 Ljubljana, Slovenia.
Phone: +386 1 5879 503; Fax: +386 1 5879 416; E-mail: jbut@onko-i.si

Disclosure: No potential conflicts of interest were disclosed.

Background. The aim of the study was to investigate the feasibility and safety of experimental fractionation using intensity modulated radiation therapy with a simultaneous integrated boost (IMRT-SIB) to shorten the overall treatment time without dose escalation in preoperative radiochemotherapy of locally advanced rectal cancer.

Patients and methods. Between January 2014 and November 2015, a total of 51 patients with operable stage II-III rectal adenocarcinoma were treated. The preoperative treatment with intensity modulated radiation therapy (IMRT) and a pelvic dose of 41.8 Gy and simultaneously delivered 46.2 Gy to T2/3 and 48.4 Gy to T4 tumour in 22 fractions, with standard concomitant capecitabine, was completed in 50 patients out of whom 47 were operated. The median follow-up was 35 months.

Results. The rate of acute toxicity $G \geq 3$ was 2.4%. The total downstaging rate was 89% and radical resection was achieved in 98% of patients. Pathologic complete response (pCR) was observed in 25.5% of patients, with 2-year local control (LC), disease free survival (DFS), and overall survival (OS) of 100% for this patient group. An intention-to-treat analysis revealed pN to be a significant prognostic factor for DFS and OS ($P = 0.005$ and 0.030 , respectively). LC for the entire group was 100%, and 2-year DFS and OS were 90% (95% CI 98.4–81.6) and 92.2% (95% CI 99.6–84.7), respectively.

Conclusions. The experimental regime in this study resulted in a high rate of pCR with a low acute toxicity profile. Excellent early results translated into encouraging 2-year LC, DFS, and OS.

Key words: rectal cancer; intensity modulated radiation therapy; simultaneous integrated boost; preoperative radiochemotherapy; acute toxicity; pathologic complete response

Introduction

With standard preoperative treatment of locally advanced rectal cancer (LARC), we can achieve excellent local control; but long term survival is still poor due to a high rate of distant metastases.^{1,2} To target distant microscopic disease, an additional drug has been added to the preoperative treatment in several studies, but with conflicting results of treatment outcome and high acute toxicity.³⁻⁵

Since dosimetric studies on preoperative intensity-modulated radiotherapy (IMRT) showed a better sparing of organs at risk compared with standard 3-dimensional conformal radiotherapy (3D CRT) in rectal cancer⁶⁻⁹, this novel radiation technique has been used in several prospective phase II studies with the aim of improving the treatment outcome in LARC. The treatment intensification consisted of a dose escalation with a simultaneous integrated boost (SIB), with or without the use of

an additional drug alongside standard concomitant capecitabine.¹⁰⁻¹⁵ Researchers report an encouraging rate of pathologic complete response (pCR) and local control (LC), but with substantial acute toxicity with oxaliplatin addition¹² and non-negligible late toxicity with dose escalation.¹¹

Because of a promising impact on clinical outcome, but, conflicting toxicity results with dose escalation in preoperative treatment of LARC, we conducted a phase II trial, testing the experimental fractionation with the use of IMRT-SIB in order to shorten the overall treatment time with a biologically effective dose (BED) similar to the one used in standard 3D CRT. In recently published early results from our trial, we demonstrated that preoperative radiochemotherapy with IMRT-SIB without dose escalation, concomitantly with capecitabine, can achieve a high rate of pCR, a downstaging with a very low acute toxicity profile, and excellent compliance.¹⁶ After the 2-year follow-up, we analysed the impact of experimental fractionation on LC, disease-free survival (DFS), and overall survival (OS).

Patients and methods

Study design and inclusion criteria

The trial design, eligibility criteria, and treatment details have been published previously in detail.¹⁶ In brief, patients had to present with histologically confirmed, operable adenocarcinoma, located within 15 cm from the anal verge. Patients with locally advanced, non-metastatic disease (cT ≥ 3 and/or cN ≥ 1 on magnetic resonance imaging (MRI) and M0 on CT thorax/abdomen) without contraindications for chemotherapy were included.

TABLE 1. Biologic effective dose (BED) comparison for standard 3-dimensional conformal radiotherapy (3D CRT) and intensity modulated radiotherapy with simultaneous boost (IMRT-SIB) as experimental fractionation

Treatment	Pelvis TD/d/BED (Gy)	Tumour T3 TD/d/BED (Gy)	Tumour T4 TD/d/BED (Gy)
3D CRT	45 / 1.8 / 37.5	50.4 / 1.8 / 40.9	54 / 1.8 / 43.9
IMRT-SIB	41.8 / 1.9 / 35.9	46.2 / 2.1 / 42.1	48.4 / 2.2 / 45.2

BED is calculated as $BED = TD \times (d + \alpha/\beta) / (2 + \alpha/\beta) - (T - t) \times D_{\text{ref}}$ in which TD is the total dose, d dose (Gy) per fraction, α/β is the common linear-quadratic quotient (set to 10 Gy), D_{ref} is the dose recovered due to proliferation (set to 0.6 Gy/day), T = total treatment time and t = initial delay time (days, set to 7 days) data from 36 prospective studies, 7 retrospective studies and 17 other articles were used. A total of 131 scientific articles are included, involving 25 351 patients. The results were compared with those of a similar overview from 1996 including 15 042 patients. The conclusions reached can be summarized thus: The results after rectal cancer surgery have improved during the past decade. It is likely that local failure rates after 5 years of follow-up at hospitals adopting the TME-concept (TME = total mesorectal excision,²⁰ Standard fractionation for preoperative rectal cancer treatment with 3D CRT consists of 45 Gy in 25 fractions to the tumour and regional lymph nodes (pelvis) and additional boost 3 x 1.8 Gy (TD 50.4 Gy) in T3 and 5 x 1.8 Gy (TD 54 Gy) in T4 tumour.

Prior to treatment, all patients received detailed oral and written information, and signed an informed consent form. The trial was approved by the National Medical Ethics Committee of the Republic of Slovenia (No. 41/12/13) and was in agreement with the Declaration of Helsinki. The study was registered in the ClinicalTrials.gov database (NCT02268006).

Treatment protocol

The target volumes and dose prescription were defined according to ICRU Reports 50, 62¹⁷, and 83.¹⁸ The gross tumour volume (GTV) encompassed all visible primary tumours. GTV + 1 cm represented a boost volume (CTV2), and the clinical target volume 1 (CTV1) contained CTV2, mesorectum, and regional lymph nodes from L5/S1 to 4 cm below the tumour or *musculus levator ani*. The nodes along *arteria iliaca externa* were included in case of substantial genitourinary structure infiltration, and the *ischiorectal fossa* and anal canal in the case of *musculus levator ani* or anal canal involvement. The internal target volume (ITV) extended up to 0.5 cm anteriorly in the lower half and up to 1.5 cm anteriorly in the upper half of the mesorectum.¹⁹ The planning target volume (PTV) was extended from ITV for 7 mm posteriorly and laterally, and 10 mm in other directions.

PTV 1 received 41.8 Gy in 22 fractions and SIB was prescribed to tumour (PTV 2) concomitantly to doses of 46.2 Gy and 48.4 Gy to T ≤ 3 and T4 tumours in 22 fractions, respectively, 5 times per week (Monday to Friday) (Table 1). The main constraints for organs at risk were: $V_{45\text{Gy}} < 195$ cc and $D_{\text{max}} \leq 50$ Gy; anal canal $V_{40\text{Gy}} \leq 40\%$ and $D_{\text{max}} \leq 55$ Gy; iliac crests $V_{30\text{Gy}} < 50\%$, $V_{40\text{Gy}} < 35\%$; bladder $V_{30\text{Gy}} < 50\%$ and $V_{35\text{Gy}} < 35\%$; and penile bulb $D_{90\%} < 50$ Gy [16] (Figure 1).

The treatment was delivered on Clinac 2100 CDI (Varian, Palo Alto, USA) using the dynamic multi-leaf collimator technique with 6MV photons and a daily position verification (ExacTrac X-ray 6D system, BrainLAB AG, Feldkirchen, Germany).

Patients received concomitant chemotherapy with capecitabine from the first to last day of the radiation treatment (including weekends) at a daily dose of 825 mg/m²/12 h. One dose was taken 1 hour prior to irradiation. The treatment compliance and acute toxicity were evaluated weekly according to the common terminology criteria for adverse events (CTCAE) v.4.0.²¹

Surgery was scheduled 6–8 weeks after the completion of chemoradiotherapy, pathologic stage

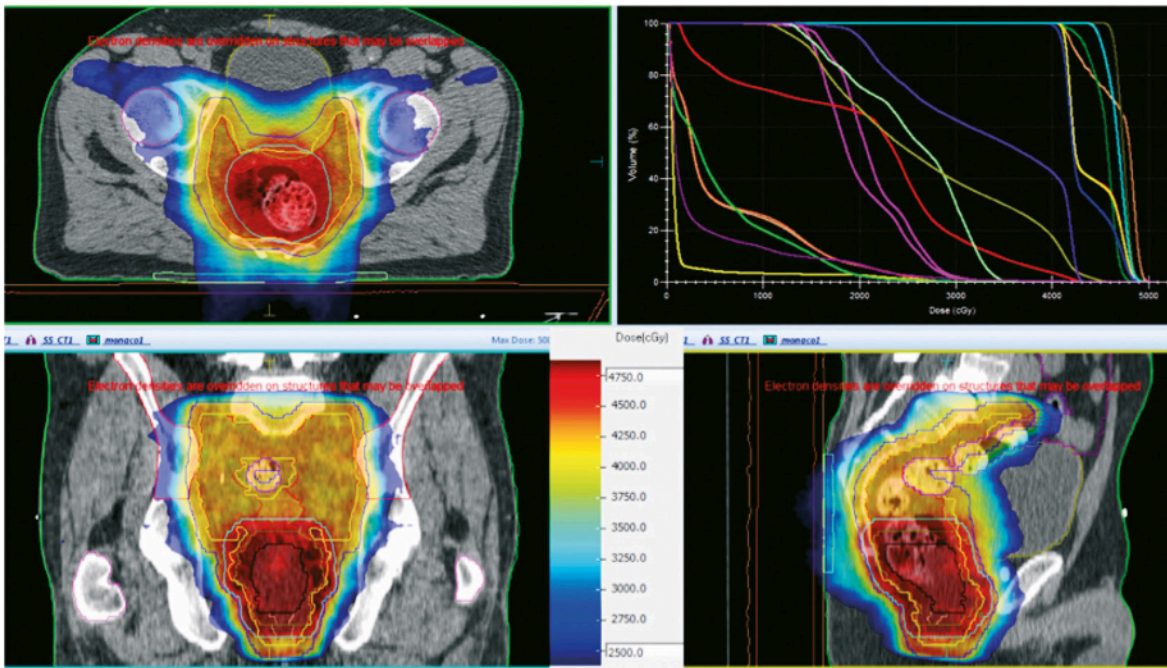


FIGURE 1. Intensity modulated radiation therapy plan met the planning goals.

recorded according to the AJCC 7th edition²², and tumour regression grade according to the criteria by Dworak *et al.*²³

Six cycles of adjuvant chemotherapy with capecitabine were offered to patients with residual tumour on pathologic examination. After treatment, the follow-up consisted of clinical and serum CEA evaluation every 3 months for two years, and later on a bi-annual basis with abdominal ultrasound every 6 months and a chest radiograph annually.

Statistics

This was a prospective phase II study on patients with locally advanced rectal cancer, designed to evaluate the pathologic complete response after experimental preoperative treatment as a primary endpoint. The key secondary endpoints were to evaluate the acute toxicity of preoperative treatment, tumour response, LC, DFS, and OS. Late toxicity and the quality of life will be analysed after a 5-year follow-up.

All time intervals were calculated from the date of operation or date of chemoradiotherapy completion (for non-operated patients). The end dates for time calculations were the dates of the last follow-up or death for OS, and for DFS the dates of detected local/distant relapse, last follow-up, or death. In the patient with primary lung metastasis and in

non-operated patients, we counted the DFS time as 0 months.

A statistical analysis was performed using the Statistical Package for the Social Sciences, version 22.0 (SPSS Inc., Chicago, IL, USA). Descriptive statistics were used for presenting general data. Patients surgically treated after chemoradiotherapy completion (N = 47) entered treatment response analysis. Fisher's exact test was used for tumour regression grade prognostic group comparison. The survival curves were calculated with the Kaplan-Maier method and the influence of the possible prognostic factors on survival was verified by means of the log-rank test.

Results

Between January 2014 and November 2015, a total of 51 patients were treated (Figure 2). Patients and tumour characteristics were described in detail elsewhere¹⁶, but, briefly – the median age of the group was 66 years (range, 30–81 years) and two thirds were men. Nearly half of the tumours were located in the lower third of the rectum and 20 patients had positive mesorectal fascia (MRF+). According to AJCC 7th edition²², the clinical stages of the disease were as follows: T2N1M0 (n = 1), T3N0M0 (n = 6), T3N1M0 (n = 15), T3N2M0 (n = 22), T4N1M0 (n = 4), T4N2M0 (n = 2), and T3N1M1 (n = 1). One patient had a small lung lesion prior to

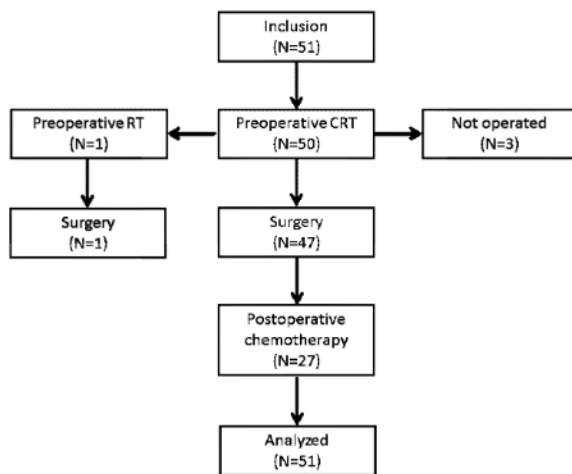


FIGURE 2. Distribution of patients through the trial.

CRT = radiochemotherapy; RT = radiotherapy

treatment, but control CT following the treatment revealed a primary metastatic disease with lung metastasis in his case.

Treatment

Preoperative radiochemotherapy according to protocol was completed by 50 patients in a median of 31 days (range 29–36 days), and one received preoperative short-course radiotherapy (25 Gy in 5 fractions) due to ischemic stroke in the first week of experimental treatment. The acute toxicity of

TABLE 2. Influence of potential prognostic factors on overall survival (OS) and disease free survival (DFS)

Prognostic factor	OS	DFS
Age	ns	ns
Gender	ns	ns
WHO PS	ns	ns
Tumour grade	ns	ns
cTumour stage ^a	ns	ns
cNodal stage ^a	ns	ns
TRG	ns	ns
TRG prognostic group	ns	ns
pTumour stage ^a	ns	ns
pNodal stage ^a	p = 0.005	p = 0.039
pCR ^f		
Adjuvant chemotherapy ^g	ns	ns
5-6 vs. ≤4 cycles*	p = 0.009	p = 0.012

TRG = tumour regression grade²³; WHO PS = WHO performance status; f – pathologic complete response; g – chemotherapy; * calculated for 36 patients with indication for adjuvant chemotherapy; ns = not specific (p > 0.05).

^a according to the AJCC, 7th edition²²

preoperative treatment was mild, with only two G3 acute adverse events with infectious enterocolitis and radiodermatitis.

Surgery was performed in 48 patients and operation was omitted in three due to the patient's refusal, metachronous pancreatic carcinoma, and serious bleeding from rectal varices. Low anterior resection was performed in 40 patients, abdominoperineal resection in 7, and pelvic exenteration in 1. Radical resection (R0) was achieved in 47 patients and one had a microscopic carcinoma focus in the circumferential margin (R1). Major complications (CTCAE v.4.0 G ≥ 3) occurred in 4 out of 48 patients. A rescue surgery with pelvic exenteration was performed in the patient with rectal varices due to tumour progression 35 months after chemoradiotherapy completion. She is disease-free 4 months after R0 resection.

Adjuvant chemotherapy was given to patients who did not achieve pCR. In four patients, adjuvant treatment was omitted due to preoperative adverse events (ischemic stroke in two patients and infectious enterocolitis G3 in one), and one patient refused it.

Treatment response

Among 47 operated patients who completed preoperative treatment according to protocol, 12 achieved pathologic complete response (25.5%). The total downstaging rate was 89% (42 of 47 patients), with a decrease in T and N stages observed in 32 (68%) and in 39 (83%) patients, respectively. According to the Dworak criteria²³, the tumour regression grades (TRG) were TRG 4, TRG 3, TRG 2, TRG 1, and TRG 0 in 12, 16, 13, 6, and 0 patients, respectively.

Survival

An intention-to-treat analysis was performed on all 51 patients. In the median follow-up time of 35 months (range, 14–43 months), we recorded no local relapses and 4 distal relapses (two patients with lung metastases and two with both liver and paraaortic lymph node metastases). To date, 44 patients are alive without rectal cancer; two patients are alive with primary disease (one with an intact primary tumour and one with liver metastases). Three patients have died because of primary rectal cancer disease and two of other causes (myocardial infarction and pancreatic cancer).

Cumulative 2-year LC, DFS, and OS were 100%, 90% (95% CI 98.4–81.6), and 92.2% (95% CI 99.6–

TABLE 3. Comparison of tumour regression grade in patients with R0 resection

	IMRT-SIB But-Hadzic <i>et al.</i> ¹⁴ N = 46	3D CRT Focas <i>et al.</i> ³² N = 385	p	IMRT-SIB But-Hadzic <i>et al.</i> ¹⁴ N = 46	IMRT-SIB Li <i>et al.</i> ¹⁰ N = 58	p
TRG 4	12 (26%)	40 (10%)	0.004	12 (26%)	19 (33%)	0.302
TRG 2-3	29 (63%)	254 (66%)	0.404	29 (63%)	20 (35%)	0.003
TRG 0-1	5 (11%)	91 (24%)	0.031	5 (11%)	19 (32%)	0.007

3D CRT = 3D conformal radiotherapy; IMRT-SIB = intensity modulated radiation therapy with simultaneous boost; TRG = tumour regression grading²²

84.7), respectively. The possible influence of potential prognostic factors on OS and DFS was determined by means of the log-rank test (Table 2). There was no link between gender, age, performance status, cT, cN, pT, or TRG and survival. Patients with pN2 had significantly worse OS and DFS (Figure 3). In the group of 36 patients that had an indication for adjuvant chemotherapy, we found that the patients who received 5–6 cycles of chemotherapy had significantly better OS and DFS compared with ≤ 4 cycles of chemotherapy (Figure 3). We found a trend toward different OS for patients in different TRG prognostic group, although non-significant. Two-year OS's for good (TRG 4), intermediate (TRG 2–3,) and bad (TRG 0–1) prognostic groups were 100%, 93.3%, and 83.3%, respectively ($p = 0.426$). Local control, 2-year OS, and 2-year DFS were all 100% for 12 patients with pCR.

Discussion

The main limiting factor in the preoperative treatment of locally advanced rectal cancer is acute toxicity – mainly gastrointestinal – which has been preventing the intensification of standard radiochemotherapy for rectal cancer in the last decade. To date, only few prospective studies have used the dosimetric advantage of IMRT-SIB for preoperative treatment intensification of locally advanced rectal cancer.¹⁰⁻¹⁵ With our experimental preoperative fractionation regime without dose escalation, with standard capecitabine, we report lower acute toxicity rates and comparable treatment results to these dose-escalated studies.

In a previous publication, we reported a very low acute toxicity profile with only 2.4% G3 acute toxicities¹⁶, which is lower than two comparable studies with capecitabine. In a Chinese study, 41.8 Gy was delivered to an elective volume in 22 fractions and the tumour-involved lymph nodes received 50.6 Gy.¹⁰ The pelvis received 46 Gy in 23 fractions in a Spanish study with simultaneous

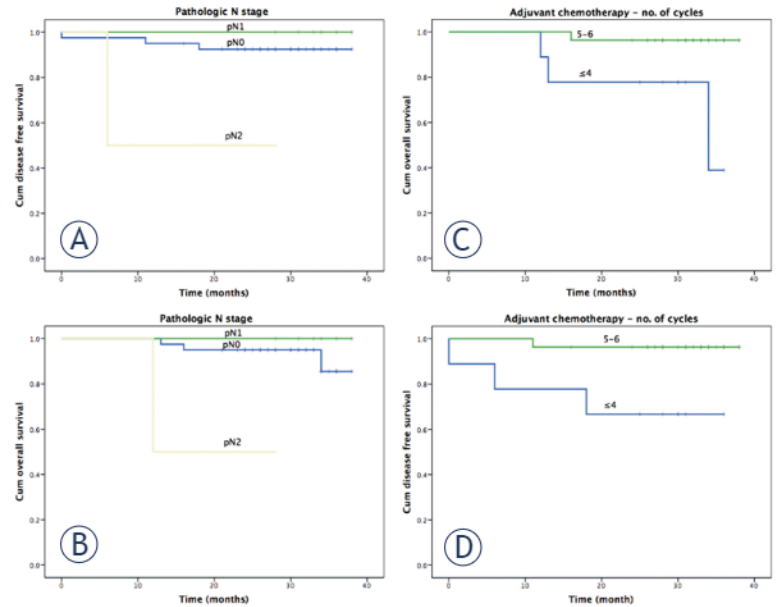


FIGURE 3. Prognostic significance of pathologic nodal stage (pN) on 2-year disease-free survival^a, overall survival^b, prognostic significance of the received number of adjuvant chemotherapy cycles in patients without pCR on 2-year disease-free survival^c, and overall survival^d in rectal cancer after preoperative radiochemotherapy and surgery.

dose escalation to 57.5 Gy to macroscopic disease.¹² Authors reported 14% and 7.6% $G \geq 3$ acute toxicity rates, respectively. In two drug concomitant chemotherapy (oxaliplatin/capecitabine) dose-escalation trials, the toxicity rates were even higher, up to 44.4%.¹³⁻¹⁵

The shorter treatment time in our trial resulted in 25.5% pCR and excellent downstaging rates of 68% and 83% for T and N stages, respectively. In our historic cohort with 3D CRT rates of pCR, T, and N downstaging were 9%, 40%, and 52.9%, respectively.²⁴ Our pCR rate did not significantly differ from the 31% and 30.6% rates in the Chinese and Spanish trials, but was significantly higher compared to our historic cohort.

We observed improved results with a BED similar to standard preoperative treatment. Because of a strong positive correlation between pCR and the

dose of radiation²⁵, we believe that there are multiple factors positively influencing the results of our trial. Firstly, if the time factor in our calculations is underestimated due to a short lag-period²⁶, the BED of our fractionation regime is higher and improvement is achieved due to a steep dose response curve. Secondly, in historic 3D CRT trials, pretreatment pelvic MRI was not mandatory²⁷ and the clinical stage was unreliable. Even in the era of MRI, only recently has cN begun being determined according to morphology.²⁸ Thirdly, there was a huge improvement in the precision of the radiotherapy process in recent years. In our study protocol, we tried to minimize the dosimetric impact of inter-observer variability²⁹ by using detailed contouring guidelines and a co-registered planning MRI³⁰ when available. A non-uniform safety margin was applied and IGRT was used. In our previous 3D CRT trial, the contouring guidelines were more loose and GTV was contoured according to CT, since MRI was done only in 5% of patients.²⁴ A uniform 1 cm safety margin was used, not counting for organ motion, and the patient position was verified with weekly portal films only. Consequently, systematic errors were substantial and could have contributed to poorer results.

Our tumour downstaging rate is comparable to the Chinese trial; but in a Spanish trial, the rate was higher (76.4%) with a higher dose escalation.^{10,12} In both studies, an additional boost was applied to the involved lymph nodes with only a 5 mm margin and position verification with weekly portal films in the Chinese and a daily cone beam CT in the Spanish trial. Our N-downstaging rate is similar to that in the Chinese research and higher than the Spanish trial despite lower BED, which suggests that an additional boost to the involved lymph nodes is not mandatory. Another explanation of these results would be that the 5 mm margin around the nodal GTV that was used in both of the other trials was not sufficient to adequately cover the affected nodes with the boost dose and the N downstaging rate could have been higher.

Since the pCR rate has a poor treatment prognostic value³¹ and the downstaging comparison with historic trials is not reliable, we performed a comparison of three prognostic groups according to late results of CAO/ARO/AIO-94 trial. They found a significant impact on 10-year DFS for the good (TRG 4), intermediate (TRG 2–3), and bad (TRG 0–1) response groups. We compared the proportions from our study to comparable preoperative studies with concomitant capecitabine (Table 3). In comparison to 3D CRT³², we achieved a higher

pCR rate (TRG 4; $p = 0.004$) and observed less bad responses to treatment (TRG 0–1; $p = 0.031$) with an equal proportion of patients in the intermediate prognostic group. In comparison with dose-escalation IMRT-SIB preoperative treatment¹⁰, we didn't find a significant difference in the good prognostic group, but the proportion of patients with an intermediate response was higher ($p = 0.003$) with fewer patients exhibiting a bad response in our study ($p = 0.007$), which could be a consequence of a more precise radiotherapy procedure.

We report an excellent 2-year LC of 100%, and 2-year DFS and OS of 90% and 92.2%, respectively. The results are comparable to more intensified preoperative treatment regimes with reported 2–3-year LC 70–100%, DFS 86–95% and OS 64–96%. In concordance with other studies, we found pN to be the main prognostic factor on OS and DFS²⁷; no association between pCR and survival; and an excellent prognosis for pCR group of patients (2-year LC, DFS, and OS all 100%). The main limitations of our study are the lack of randomization, the small sample size, and no long-term follow-up. Longer follow-up of the patients is needed to determine if excellent early results will translate to improved long-term results, and to determine the impact of our treatment protocol on late toxicity and QoL.

In conclusion high rate of pCR and downstaging after preoperative treatment of LARC with IMRT-SIB in 22 fractions without dose escalation, concomitant with capecitabine, translated into excellent 2-year LC, DFS, and OS (100%, 90%, and 92.2%, respectively). With the presented results, we have confirmed the superiority of our study to the conventional preoperative regimen.^{5,24} Because of similar results to other IMRT trials and lower acute toxicity profile, our experimental regime is eligible for testing treatment intensification with a second drug in order to further improve the treatment efficacy.

References

1. Bujko K, Michalski W, Kepka L, Nowacki MP, Nasierowska-Guttmejer A, Tokar P, et al. Association between pathologic response in metastatic lymph nodes after preoperative chemoradiotherapy and risk of distant metastases in rectal cancer: an analysis of outcomes in a randomized trial. *Int J Radiat Oncol Biol Phys* 2007; **67**: 369–77. doi: 10.1016/j.ijrobp.2006.08.065
2. Leibold T, Shia J, Ruo L, Minsky BD, Akhurst T, Gollub M J, et al. Prognostic implications of the distribution of lymph node metastases in rectal cancer after neoadjuvant chemoradiotherapy. *J Clin Oncol* 2008; **26**: 2106–11. doi: 10.1200/JCO.2007.12.7704
3. Gérard JP, Azria D, Gourgou-Bourgade S, Martel-Lafay I, Hennequin C, Etienne PL, et al. Clinical outcome of the ACCORD 12/0405 PRODIGE 2 randomized trial in rectal cancer. *J Clin Oncol* 2012; **30**: 4558–65. doi: 10.1200/JCO.2012.42.8771

4. Rödel C, Liersch T, Becker H, Fietkau R, Hohenberger W, Hothorn T, et al. Preoperative chemoradiotherapy and postoperative chemotherapy with fluorouracil and oxaliplatin versus fluorouracil alone in locally advanced rectal cancer: initial results of the German CAO/ARO/AIO-04 randomised phase 3 trial. *Lancet Oncol* 2012; **13**: 679-87. doi: 10.1016/S1470-2045(12)70187-0
5. Velenik V, Ocvirk J, Music M, Bracko M, Anderluh F, Oblak I, et al. Neoadjuvant capecitabine, radiotherapy, and bevacizumab (CRAB) in locally advanced rectal cancer: results of an open-label phase II study. *Radiat Oncol*. 2011; **6**: 105. doi: 10.1186/1748-717X-6-105
6. Arbea L, Ramos LI, Martínez-Monge R, Moreno M, Aristu J. Intensity-modulated radiation therapy (IMRT) vs. 3D conformal radiotherapy (3DCRT) in locally advanced rectal cancer (LARC): dosimetric comparison and clinical implications. *Radiat Oncol* 2010; **5**: 17. doi: 10.1186/1748-717X-5-17
7. Guerrero Urbano MT, Henrys AJ, Adams EJ, Norman AR, Bedford JL, Harrington KJ, et al. Intensity-modulated radiotherapy in patients with locally advanced rectal cancer reduces volume of bowel treated to high dose levels. *Int J Radiat Oncol Biol Phys* 2006; **65**: 907-16. doi: 10.1016/j.ijrobp.2005.12.056
8. Engels B, De Ridder M, Tournel K, Sermeus A, De Coninck P, Verellen D, et al. Preoperative helical tomotherapy and megavoltage computed tomography for rectal cancer: impact on the irradiated volume of small bowel. *Int J Radiat Oncol Biol Phys* 2009; **74**: 1476-80. doi: 10.1016/j.ijrobp.2008.10.017
9. Mok H, Crane CH, Palmer MB, Briere TM, Beddar S, Delclos ME, et al. Intensity modulated radiation therapy (IMRT): differences in target volumes and improvement in clinically relevant doses to small bowel in rectal carcinoma. *Radiat Oncol* 2011; **6**: 63. doi: 10.1186/1748-717X-6-63
10. Li JL, Ji JF, Cai Y, Li XF, Li YH, Wu H, et al. Preoperative concomitant boost intensity-modulated radiotherapy with oral capecitabine in locally advanced mid-low rectal cancer: a phase II trial. *Radiother Oncol* 2012; **102**: 4-9. doi: 10.1016/j.radonc.2011.07.030
11. Engels B, Platteaux N, Van den Begin R, Gevaert T, Sermeus A, Storme G, et al. Preoperative intensity-modulated and image-guided radiotherapy with a simultaneous integrated boost in locally advanced rectal cancer: report on late toxicity and outcome. *Radiother Oncol* 2014; **110**: 155-9. doi: 10.1016/j.radonc.2013.10.026
12. Hernando-Requejo O, López M, Cubillo A, Rodríguez A, Ciervide R, Valero J, et al. Complete pathological responses in locally advanced rectal cancer after preoperative IMRT and integrated-boost chemoradiation. *Strahlenther Onkol* 2014; **190**: 515-20. doi: 10.1007/s00066-014-0650-0
13. Picardi V, Macchia G, Guido A, Giaccherini L, Deodato F, Farioli A, et al. Preoperative chemoradiation with VMAT-SIB in rectal cancer: a phase II study. *Clin Colorectal Cancer* 2016. doi: 10.1016/j.clcc.2016.06.004
14. Hong TS, Moughan J, Garofalo MC, Bendell J, Berger AC, Oldenburg NBE, et al. NRG Oncology Radiation Therapy Oncology Group 0822: a phase 2 study of preoperative chemoradiation therapy using intensity modulated radiation therapy in combination with capecitabine and oxaliplatin for patients with locally advanced rectal cancer. *Int J Radiat Oncol Biol Phys* 2015; **93**: 29-36. doi: 10.1016/j.ijrobp.2015.05.005
15. Zhu J, Liu F, Gu W, Lian P, Sheng W, Xu J, et al. "Concomitant boost IMRT-based neoadjuvant chemoradiotherapy for clinical stage II/III rectal adenocarcinoma: results of a phase II study. *Radiat Oncol* 2014; **9**: 70. doi: 10.1186/1748-717X-9-70
16. But-Hadzic J, Anderluh F, Breclj E, Edhemovic I, Secerov-Ermenc A, Hudej R, et al. Acute toxicity and tumor response in locally advanced rectal cancer after preoperative chemoradiation therapy with shortening of the overall treatment time using intensity-modulated radiation therapy with simultaneous integrated boost: a phase 2 trial. *Int J Radiat Oncol Biol Phys* 2016; **96**: 1003-10. doi: 10.1016/j.ijrobp.2016.08.031
17. ICRU. Prescribing, recording and reporting photon beam therapy (ICRU report 50). *ICRU Report* 1993: 357-60. doi: 10.2307/3578862
18. Gregoire V, Mackie TR. Dose prescription, reporting and recording in intensity-modulated radiation therapy: a digest of the ICRU Report 83. *Imaging Med* 2011; **3**: 367-73. doi: 10.2217/iim.11.22
19. Van Triest B, Nijkamp J, van Herk M, Sonke JJ, de Jong R, Hollmann B, et al. Repeat CT assessed CTV variation and PTV margins for short- and long-course pre-operative RT of rectal cancer. *Radiother Oncol* 2012; **102**: 399-405. doi: 10.1016/j.radonc.2011.11.011
20. Glimelius B, Gronberg H, Jarhult J, Wallgren A, Cavallin-Stahl E, Grönberg H, et al. A systematic overview of radiation therapy effects in rectal cancer. *Acta Oncol* 2003; **42**: 476-92.
21. U. S. Department of Health and Human Services, National Institutes of Health, National Cancer Institute. Common terminology criteria for adverse events (CTCAE), Version 4.0 (CTCAE). May 28, 2009: Available at: https://www.eortc.be/services/doc/ctc/CTCAE_4.03_2010-06-14_QuickReference_5x7.pdf. [Cited 2017 Jun 15].
22. Edge SB, Compton CC. The American Joint Committee on Cancer: the 7th edition of the AJCC cancer staging manual and the future of TNM. *Ann Surg Oncol* 2010; **17**: 1471-4. doi: 10.1245/s10434-010-0985-4
23. Dworak O, Keilholz L, Hoffmann A. Pathological features of rectal cancer after preoperative radiochemotherapy. *Int J Colorectal Dis*. 1997; **12**: 19-23.
24. Velenik V, Oblak I, Anderluh F. Long-term results from a randomized phase II trial of neoadjuvant combined-modality therapy for locally advanced rectal cancer. *Radiat Oncol* 2010; **5**: 88. doi: 10.1186/1748-717X-5-88
25. Burbach JPM, den Harder AM, Intven M, van Vulpen M, Verkooyen HM, Reerink O. Impact of radiotherapy boost on pathological complete response in patients with locally advanced rectal cancer: a systematic review and meta-analysis. *Radiother Oncol* 2014; **113**: 1-9. doi: 10.1016/j.radonc.2014.08.035
26. Suwinski R, Taylor JM, Withers HR. Rapid growth of microscopic rectal cancer as a determinant of response to preoperative radiation therapy. *Int J Radiat Oncol Biol Phys* 1998; **42**: 943-51. doi: [http://dx.doi.org/10.1016/S0360-3016\(98\)00343-5](http://dx.doi.org/10.1016/S0360-3016(98)00343-5)
27. Fokas E, Liersch T, Fietkau R, Hohenberger W, Beissbarth T, Hess C, et al. Tumor regression grading after preoperative chemoradiotherapy for locally advanced rectal carcinoma revisited: updated results of the CAO/ARO/AIO-94 trial. *J Clin Oncol* 2014; **32**: 1554-62. doi: 10.1200/JCO.2013.54.3769
28. Brown G, Richards CJ, Bourne MW, Newcombe RG, Radcliffe AG, Dallimore NS, et al. Morphologic predictors of lymph node status in rectal cancer with use of high-spatial-resolution MR imaging with histopathologic comparison. *Radiology* 2003; **227**: 371-7. doi: 10.1148/radiol.2272011747
29. Lobefalo F, Bignardi M, Reggiori G, Tozzi A, Tomatis S, Alongi F, et al. Dosimetric impact of inter-observer variability for 3D conformal radiotherapy and volumetric modulated arc therapy: the rectal tumor target definition case. *Radiat Oncol* 2013; **8**: 176. doi: 10.1186/1748-717X-8-176
30. O'Neill BD, Salerno G, Thomas K, Tait DM, Brown G. MR vs CT imaging: low rectal cancer tumour delineation for three-dimensional conformal radiotherapy. *Br J Radiol* 2009; **82**: 509-13. doi: 10.1259/bjr/60198873
31. Glynne-Jones R, Mawdsley S, Pearce T, Buyse M. Alternative clinical end points in rectal cancer - are we getting closer? *Ann Oncol* 2006; **17**: 1239-48. doi: 10.1093/annonc/mdl173
32. Rödel C, Martus P, Papadopoulos T, Füzesi L, Klimpfinger M, Fietkau R, et al. Prognostic significance of tumor regression after preoperative chemoradiotherapy for rectal cancer. *J Clin Oncol* 2005; **23**: 8688-96. doi: 10.1200/JCO.2005.02.1329