

## RESEARCH ARTICLE

# Environmental factors influence cross-talk between a heat shock protein and an oxidative stress protein modification in the lizard *Gallotia galloti*

Edward Gilbert<sup>1,2</sup>, Anamarija Žagar<sup>3,4</sup>, Marta López-Darias<sup>5</sup>, Rodrigo Megía-Palma<sup>4,6,7</sup>, Karen A. Lister<sup>8</sup>, Max Dolton Jones<sup>9</sup>, Miguel A. Carretero<sup>4,7,10</sup>, Nina Serén<sup>4,7,10</sup>, Pedro Beltran-Alvarez<sup>8‡\*</sup>, Katharina C. Wollenberg Valero<sup>1,11‡\*</sup>

**1** School of Natural Sciences, The University of Hull, Hull, United Kingdom, **2** Energy and Environment Institute, The University of Hull, Hull, United Kingdom, **3** National Institute of Biology, Ljubljana, Slovenia, **4** CIBIO Research Centre in Biodiversity and Genetic Resources, InBIO, Universidade do Porto Campus de Vairão, Vairão, Portugal, **5** Instituto de Productos Naturales y Agrobiología (IPNA-CSIC), La Laguna, Tenerife, Canary Islands, Spain, **6** Universidad de Alcalá (UAH), Biomedicine and Biotechnology, Alcalá de Henares, Madrid, Spain, **7** BIOPOLIS Program in Genomics, Biodiversity and Land Planning, CIBIO, Campus de Vairão, Vairão, Portugal, **8** Biomedical Institute for Multimorbidity, Centre for Biomedicine, Hull York Medical School, The University of Hull, Hull, United Kingdom, **9** Department of Fish and Wildlife Conservation, Virginia Tech, Blacksburg, VA, United States of America, **10** Departamento de Biologia, Faculdade de Ciências, Universidade do Porto, Porto, Portugal, **11** School of Biology and Environmental Science, University College Dublin, Belfield Campus, Dublin, Ireland

‡ PBA and KCWV contributed equally as corresponding authors to this work.

\* [pedro.beltran-alvarez@hymns.ac.uk](mailto:pedro.beltran-alvarez@hymns.ac.uk) (PBA); [katharina.wollenbergvalero@ucd.ie](mailto:katharina.wollenbergvalero@ucd.ie) (KCWV)



## OPEN ACCESS

**Citation:** Gilbert E, Žagar A, López-Darias M, Megía-Palma R, Lister KA, Jones MD, et al. (2024) Environmental factors influence cross-talk between a heat shock protein and an oxidative stress protein modification in the lizard *Gallotia galloti*. PLoS ONE 19(3): e0300111. <https://doi.org/10.1371/journal.pone.0300111>

**Editor:** Patrick R. Stephens, Oklahoma State University, UNITED STATES

**Received:** July 19, 2023

**Accepted:** February 21, 2024

**Published:** March 12, 2024

**Copyright:** © 2024 Gilbert et al. This is an open access article distributed under the terms of the [Creative Commons Attribution License](https://creativecommons.org/licenses/by/4.0/), which permits unrestricted use, distribution, and reproduction in any medium, provided the original author and source are credited.

**Data Availability Statement:** All relevant data are within the manuscript and its [Supporting Information](#) files. Data used in analysis and R code is available at: <https://github.com/RepTed/Proteins-in-G.-galloti.git>.

**Funding:** EG, PBA and KVV were supported by the Leeds-York-Hull Natural Environment Research Council (NERC) Doctoral Training Partnership (DTP) Panorama under grant NE/S007458/1 <https://panorama-dtp.ac.uk/> KVV acknowledges

## Abstract

Better understanding how organisms respond to their abiotic environment, especially at the biochemical level, is critical in predicting population trajectories under climate change. In this study, we measured constitutive stress biomarkers and protein post-translational modifications associated with oxidative stress in *Gallotia galloti*, an insular lizard species inhabiting highly heterogeneous environments on Tenerife. Tenerife is a small volcanic island in a relatively isolated archipelago off the West coast of Africa. We found that expression of GRP94, a molecular chaperone protein, and levels of protein carbonylation, a marker of cellular stress, change across different environments, depending on solar radiation-related variables and topology. Here, we report in a wild animal population, cross-talk between the baseline levels of the heat shock protein-like GRP94 and oxidative damage (protein carbonylation), which are influenced by a range of available temperatures, quantified through modelled operative temperature. This suggests a dynamic trade-off between cellular homeostasis and oxidative damage in lizards adapted to this thermally and topologically heterogeneous environment.

## 1. Introduction

The molecular mechanisms underlying environmental adaptation are complex and constrained by fundamental biochemistry, especially concerning thermal adaptation and water

funding by the European Union (ERC, MolStressH2O, 101044202). <https://erc.europa.eu/homepage> AZ fieldwork was funded by FCT - Fundação para a Ciência e Tecnologia (project num. 28014 02/SAICT/2017) and by ARIS - Slovenian Research and Innovation Agency (programme P1-0255). This work was also funded by MINECO/ERDF (CGL2015-67789-C2-1-P) and FCT (CEECIND/04084/2017). AZ acknowledges funding by ARIS under project grant J1-2466 during article writing. There was no additional external funding received during this study.

**Competing interests:** The authors have declared that no competing interests exist.

**Abbreviations:** PTM, Post translational modification; HSP, Heat shock protein; 3-NT, 3-Nitrotyrosine; ER, Endoplasmic reticulum;  $T_e$ , operative temperature; TBST-, Tris buffered saline with Tween 20; SDS-PAGE, Sodium dodecyl sulfate-polyacrylamide gel electrophoresis; PVDF, Polyvinylidene difluoride; BSA, Bovine serum albumin; HRP, Horseradish peroxidase; DNP, Dinitrophenyl; DEM, Digital elevation model; AICc, Akaike information criterion corrected; GLZ, Generalised linear model.

balance [1]. Genes involved with the expression of physiological traits relating to environmental change can be differentially regulated in response to periods of cellular stress [2], and so can constitutive (baseline) protein expression levels [3], which can reach optima through evolutionary adaptation [4–6]. Amongst these mechanisms, are “frontloading” [7, 8] or “preparation for oxidative stress” [9, 10], which act to physiologically prepare organisms for frequently encountered environmental stressors. This reduces the requirement for an inducible stress response [7, 11], and links plastic responses to evolutionary processes [2, 10]. In the context of climate change, more rapid plastic responses are vital for survival, with extreme weather events happening outside of evolutionary time-scales [12]. Heat tolerance has been linked to adaptive evolution in populations of *Anolis* lizards via differentially expressed genes [13], demonstrating that the frequency of stressors can lead to environment-mediated selection at phenotypic, genomic, and regulatory levels.

Of relevance to environmental optima and cellular stress, heat-shock proteins (HSPs) play a vital role, protecting proteins from denaturation, misfolding, and aggregation [14]. HSPs occur both at constitutive levels as housekeeping molecular chaperones, and can be induced during stressful events [15], 2–6 hours after stressor exposure [16] and depending on stressor duration [6, 17]. While they are regarded as important biomarkers for responses to acute thermal and other environmental stressors, studies outside of laboratory conditions are less common [6, 18] and laboratory studies may only incompletely reflect conditions experienced in nature [19]. A member of the Heat Shock protein family, relevant to environmental settings, is GRP94 (Heat Shock Protein 90 Beta Family Member 1, also called endoplasmic, GP96, or TRA1, and coded by the *HSP90B1* gene). GRP94 is a glucose-regulated protein specifically found in the endoplasmic reticulum (ER) of cells, where it acts as a molecular chaperone folding secretory proteins and regulating protein-protein interactions [20]. These functions are vital to ER quality control pathways, with GRP94 expression linked to ER stress (leading to a global unfolded protein response) and to cellular immune response, amongst others. This makes GRP94 a relevant marker for whole-organism physiological stress [20, 21]. The expression of GRP94 has also been linked to regulating oxidative stress and protein carbonylation in cell lines and tissue models in the laboratory [22, 23]. Oxidative stress occurs during conditions in which oxidative load outweighs antioxidative mechanisms, potentially leading to cell damage and death [24]. Besides genetic and disease-related causes, oxidative stress can be caused by environmental factors and induced by several mechanisms, including pollutants, different forms of radiation, nutrition, and other environmental interactions [25]. Oxidative stress markers include, for example protein post-translational modifications (PTMs) such as 3-nitrotyrosine (3-NT) [26, 27] and carbonylation [28–30]. Some evidence exists for cross-talk between protective molecular chaperone activity and oxidative stress markers, where HSPs and HSP-like molecules play a role in protection against oxidative damage [31–33] and this evidence extends to natural populations (e.g., HSP70, HSP60, HSP90, HSC70, GRP75) [34].

Squamate reptiles are vulnerable to climate change, with extinction rates accelerating [35–39], and their capacity to adapt remains unclear [40–43]. Among these, lizards provided an early model for linking behavioural thermoregulation to physiology and performance [44–46] and remain relevant as a model to investigate adaptation to different environmental conditions at the molecular level [47]. For example, to link ectotherm thermoregulation to the environmental thermal profile, the operative temperature ( $T_e$ ) can be calculated, which estimates a steady-state body temperature based on available microclimates according to a biophysical model [48]. By calculating a  $T_e$ , a more accurate picture of thermal tolerance limits to thermal stressors can be estimated, which can exceed environmental temperatures [49]. If operative temperatures can exceed physiological safety-margins, and can additionally be influenced by

other stressors such as dehydration [50], then behavioural thermoregulation opportunities influenced by the microclimate are vital for the survival of small ectotherms such as lizards.

In ectotherms, behavioural thermoregulation can act to shield physiological traits from selection [42]; however, behavioural thermoregulation does not come without costs [51–54]. For example, hard physiological boundaries may constrain adaptation beyond certain thermal limits, which are not modulated by natural selection [55, 56]. An animal's thermal sensitivities involve behavioural traits associated with reaching optimal performance, and physiological traits influencing thermal resilience. These are often accompanied by trade-offs, like to fitness [57–59], and are subject to differential evolvability [60]. However, the molecular basis of how adaptation to environmental optima is achieved, is less explored [47]. *Gallotia galloti* is a basal lacertid lizard endemic to the Canary Islands (Spain). In Tenerife it is abundant, and occupies all types of habitats, from the endemic coastal scrub up to the high mountain vegetation, including the top of El Teide stratovolcano, at 3,715 m a.s.l. The species inhabits remarkably diverse environments, including varying thermal and hydric parameters, making this species an ideal model to study environmental adaptation [61, 62].

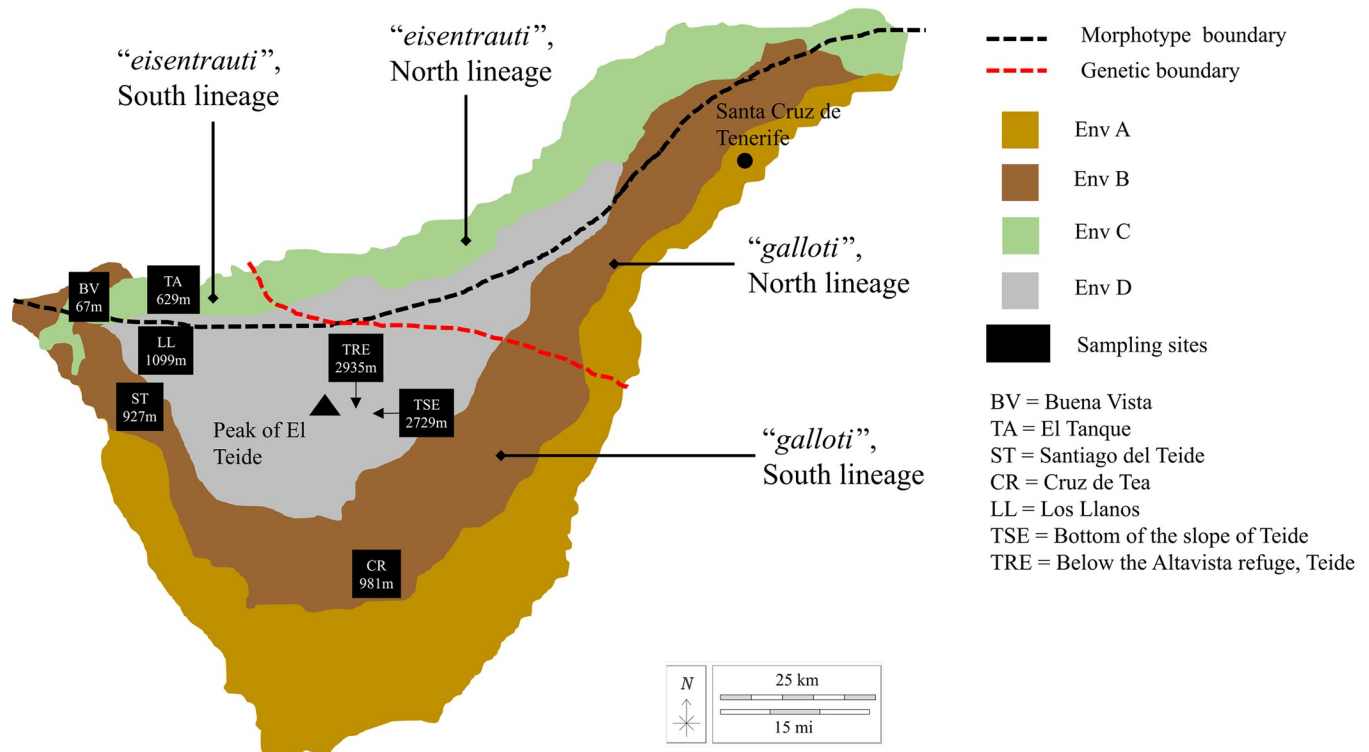
The macrohabitat of Tenerife comprises four main bioclimatic zones, ranging from hot and dry (Env A) at low elevations (average monthly temperature range 17.7–23.6°C, annual rainfall ~100 mm), to wetter and cooler mid-elevations further inland in the South (Env B) (average monthly temperature range 9.7–15.6°C, annual rainfall ~105 mm). In the Northern side of the island, slopes are characterised by higher rainfall and humidity (Env C) (average monthly temperature range 17.8–23.8°C, annual rainfall ~128 mm). The highest elevations around Teide experience highly variable temperatures and precipitation patterns (Env D) (average monthly temperature range 6.7–14.3°C) [61]. Further, contrasting microclimates within and between these environmental zones are vitally important in lizard ecology [63–65]. Diversification across Tenerife resulted in two subspecies with contrasting phenotype, *G. g. galloti* in the South slopes of the island and *G. g. eisentrauti* in the Northern slopes. However, two phylogenetic clades [66, 67] bisect each of these two subspecies into a North-Eastern and a South-Western lineage. Laboratory experiments indicate that preferred temperature remains similar across altitudes and that water loss is size-related within phylogenetic lineages, but that *G. g. eisentrauti* selects lower temperatures and has higher evaporative water loss than *G. g. galloti* [68]. This suggests a combination of ecophysiological conservativeness (and, hence, phenotypic plasticity) at shallow evolutionary levels and selection on both thermal and hydric traits at deeper evolutionary levels [68].

This study aimed to establish baseline expression of heat shock proteins GRP94 and HSP70, and levels of protein carbonylation and 3-NT modifications, indicative of oxidative stress, in both *G. galloti* subspecies across contrasting environments and microclimates on Tenerife. We hypothesised that: 1) higher levels of constituent chaperones (HSP70 and GRP94) are present in tail tips of *G. galloti* at higher altitude (with associated greater radiation, and lower temperature and humidity) or coastal lowlands (due to hotter temperatures); and 2) changes in the expression of chaperones correlate with changes in the levels of oxidative stress biomarkers (carbonylation and 3-NT). Specifically, we explore cross-talk between GRP94 and carbonylation, and if proxies of thermoregulatory ability ( $T_e$ ) align with biomarker expression.

## 2. Materials & methods

### 2.1 Tissue sampling

Ethics approval was obtained for the study of preserved lizard tissues by the University of Hull (FEC\_2022\_17) and for fieldwork tissue collection from the Cabildo Insular de Tenerife and the Teide National Park (AFF 160/18 (2018–02258) and MDV/gap (28860)). Tail tips from



**Fig 1. Map showing the approximate separation of the two morphotypes (subspecies) on the island, and approximate genetic separation, with labels showing the expected morphotype and clade in each area, based on Brown et al. [67].** Environmental zoning approximated from Algar & López-Darias [61], showing the different environment types quantified on Tenerife. Environment C (green) occupies a similar distribution as the "eisenrauti" morphotype. Black squares indicate sampling sites with elevation in metres above sea level. Map outline and landmark features "El Teide" and "Santa Cruz de Tenerife" were traced from arcGIS (Esri, "Topographic" [basemap]). "World Topographic Map").

<https://doi.org/10.1371/journal.pone.0300111.g001>

*Gallotia galloti* were acquired from seven localities across the island of Tenerife during July 2018, covering various elevations and bioclimates (excluding Env A in Fig 1), and both subspecies (12 from *G. g. eisenrauti* and 16 from *G. g. galloti*), from just the "South" phylogenetic lineage (Fig 1). The tail tips consisted of scales, skin, muscle, blood vessels, and some bone and cartilage. Four biological replicates were obtained from each locality to yield 28 samples. Since these samples were involved in other research [68], we could not ensure balanced design of males and females, with the two highest-elevation populations sampled from females only. However, to account for this factor, sex was included as a predictor in statistical analysis. Tissues were snap frozen and stored at  $-80^{\circ}\text{C}$ , and time-to-processing was included as another factor in statistical analysis (see S3 and S4 Tables in S1 File).

## 2.2 Protein extraction and antibody testing

Proteins were extracted from tail tip tissue, quantified with a Pierce BCA protein assay (ThermoFisher Scientific, Waltham, USA, 23225), and all samples were then normalised to a protein concentration of  $1\ \mu\text{g}/\mu\text{l}$ . We first tested the performance of antibodies against GRP94 and HSP70 for species cross-reactivity in reptiles, on a protein lysate from the gecko species *Hemidactylus turcicus*, and used this same lysate as a positive control for standardisation purposes on all membranes. Western blotting was then performed on all samples (detailed Methods are given in Supplementary Material 1 in S1 File).

To detect carbonylation, an Abcam Protein Carbonyl Assay Kit (Western blot, Cambridge, UK, ab178020) was used on new membranes for each set of biological replicates, with *H.*

*turcicus* and negative controls. The manufacturer's instructions were followed for derivation of the protein mixture plus controls, and samples were loaded, ran through SDS-PAGE, and transferred as above. Membranes were incubated with DNP primary antibody and HRP conjugated secondary antibodies included in the kit and visualised as above. To detect 3-NT, the above steps were followed except that a PVDF membrane activated in methanol was used and blocked using 5% BSA/TBST. The membrane was incubated with 3-NT antibody in 5% BSA/TBST at 1:1,000 dilution and signals visualised as above.

### 2.3 Band densitometry and standardisation

First, bands for each biomarker from each western blot image, as well as the associated total protein density (from Ponceau staining), were measured in ImageJ [69] for each lane. To standardise bands, a lane standardisation factor (see Supplementary Methods in [S1 File](#)) was calculated by dividing the lane value over the highest lane value on that membrane [70]. Biomarker band density was then divided by that lane standardisation factor. All bands present for the two candidate proteins, (GRP94 and HSP70) were quantified. Protein carbonylation was investigated at 250, 130, and 120 kDa bands, as well as the sum of these bands (described as "total carbonylation"). 3-NT bands were analysed at approximately 65, 55, 30, and 18 kDa, as well as the sum of these bands (described as "total nitrated tyrosine").

### 2.4 Microclimate data

To obtain microclimatic parameters as predictors for biomarker expression, microclimate values at the scale of the individual lizard at each locality were modelled using *NicheMapR* and *microclima* packages in R [71], specifically using the *micro\_ncep* function of the *NicheMapR* v.3.2.1 [72] R package. A raster object of site-specific elevation was accessed via the *get\_dem* function of the *microclima* v.0.1.0 R package [71], which was used to generate microclimate temperature surfaces at 3 cm above ground ( $hgt = 0.03$ ) using the *run\_auto* function. 3 cm was chosen as a biologically relevant height given the size, vagility, and behaviours of *G. galloti* [72]. Modelled microclimatic variables at each locality are shown in S5 Fig in [S1 File](#). Microclimate variables are adjusted when modelled, which represent different patterns compared with other bioclimate layers (e.g. solar radiation).

Microclimate temperature for each site was modelled separately for each locality on the date of collection, with mean, maximum, and minimum daily temperature generated from the temperature layers. The investigated biomarkers change in the timeframe of hours [16] to no more than a few days [73, 74]. We did not detect any sudden changes in environmental parameters before the sampling day (see S3, S4 Tables in [S1 File](#)), providing additional justification for modelling microclimate on the day of collection. Furthermore, the cardinal aspect and the slope angle for each site were extracted from a DEM layer of Tenerife [75] using ArcGIS pro (Version 2.8.0, ESRI).

### 2.5 Lizard hourly operative temperature

To put our results in the context of lizard thermal ecology, we modelled the hourly operative temperature ( $T_e$ ) of lizards at each locality using the *TrenchR* package [76] in R.  $T_e$  estimates a steady-state body temperature based on available microclimates according to a biophysical model [48].

To consolidate factors related to solar radiation and topology into a biologically relevant metric, and to investigate thermoregulatory opportunity for *G. galloti*, we modelled mean (over 24 h)  $T_e$  and investigated its relationship with GRP94 expression and total protein carbonylation. Variables used for the computation of  $T_e$  included: longitude and latitude,

elevation, minimum and maximum air and soil temperature, wind speed, body temperature assumption (35.75°C, [77], date, average mass and average snout vent length, with all other values calculated in the package, using the model parameters set by [78].

## 2.6 Statistical analysis

In addition to the individual-scale microclimate data, additional predictor variables considered for statistical analysis were sex, elevation, subspecies, population ID, macroenvironmental category and sample processing time from field to tissue collection. To prevent model overfitting and statistical and computational viability, all candidate predictor variables were then checked for collinearity using the R package *corrplot* [79], and only one of two correlated variables greater than a Pearson's correlation coefficient threshold of 0.9 were included (see S2 and S3 Figs in [S1 File](#) for variable selection). Final variables included in statistical analysis were slope angle, sex, morphotype (subspecies), elevation, population, daily average temperature, environment category, relative humidity, soil surface wetness, solar radiation, and sky radiant temperature.

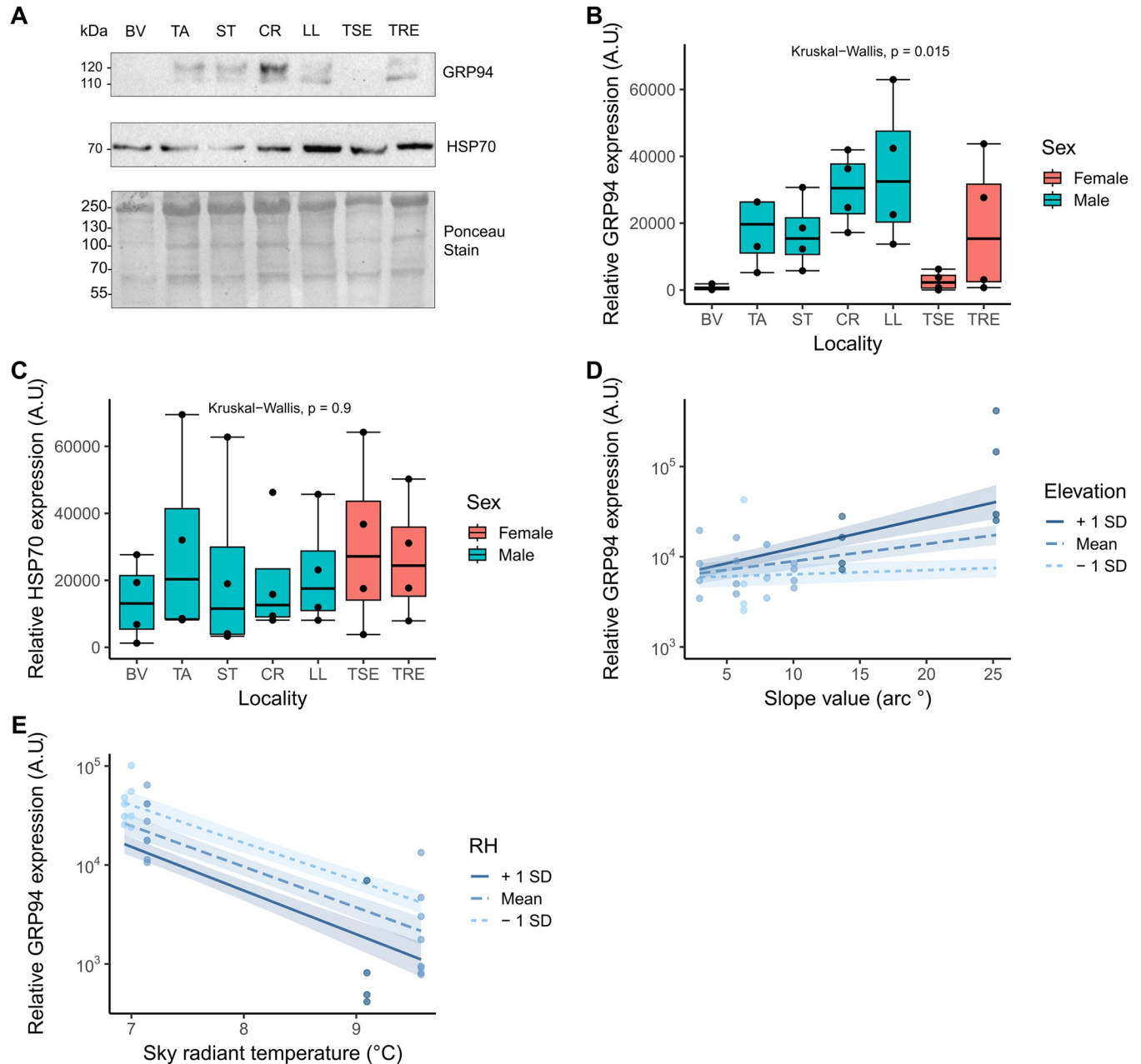
In order to test the effect of these 11 variables on the expression of biomarkers, the R package *glmulti* [80] was first used to determine the best explanatory model for each biomarker as follows: Lowest Akaike Information Criterion (AICc) score was used as an initial selection criterion, firstly running an exhaustive algorithm for each biomarker without interactions, and then repeating the search with only variables in the top selected models from the exhaustive search ( $\Delta\text{AICc} = 2$ ), and the top four model-averaged terms. Model selection was then re-run allowing for interactions between predictors using the selected terms, and the final model was selected based on inclusion of variables in the top selected models within a  $\Delta\text{AICc}$  of 2 [81], and those occurring within the top ranked model-averaged predictor terms [82].

Due to non-normality of the biomarker response variables, generalised linear models (GLM) were run with the best model for each biomarker followed by pairwise Wilcoxon tests in R. Significant variables included in the final models were visualised using the *interactions* package [83], and *post-hoc* estimated marginal means (*emmeans*), [84] were calculated for any predictor variables included in each best model. We also explored the relationship between biomarker expression across locality, between proteins and PTMs, and between mean  $T_e$  and biomarker expression through Spearman's rank correlations and Kruskal-Wallis tests.

## 3. Results

### 3.1 Expression levels of GRP94, but not of HSP70, vary with environmental factors

The aim of this study was to shed light into the biochemical underpinnings of lizard physiological response to different environmental conditions. We first tested for local variation in the levels of GRP94 and HSP70, using western blot. GRP94 was typically identified as two protein bands appearing at 120 and 110 kDa, and HSP70 appeared as a single band at 70 kDa ([Fig 2A and 2B](#)). We found a general increase in median GRP94 expression with elevation, except for the two highest elevation sites, where samples showed reduced expression ([Fig 2B](#)). Samples from these two highest sites were from female animals only. There was a statistically significant difference in GRP94 levels between the localities (KW-H = 15.82,  $df = 6$ ,  $p = 0.015$ ), however, multiple Wilcoxon pairwise comparisons did not reveal significant differences between specific localities after Benjamini-Hochberg adjustment which accounts for multiple comparisons. Two-sample Wilcoxon tests showed no statistically significant differences between the two sexes (S4 Fig in [S1 File](#)). Median HSP70 expression did not change between the localities (KW-H = 2.19,  $df = 6$ ,  $p = 0.90$ , [Fig 2C](#)).



**Fig 2.** A) Representative western blot for HSPs with two bands appearing for GRP94, and one for HSP70. Molecular weights are labelled, and Ponceau S staining from the same membrane as a loading control is included in the lower panel. B) GRP94 and C) HSP70 expression measured in arbitrary units (A.U.) in *G. galloti* across different localities in Tenerife, from the lowest to the highest elevation. Sex is indicated by colour, where blue = males and red = females. D) and E) show significant interaction terms determined from model selection for GRP94 expression. GRP94 expression is plotted on the log<sub>10</sub> scale. The main predictor is plotted on the x-axis and the moderating predictor, relative humidity (RH) is plotted as three separate lines, with a mean and ± 1 standard deviation (SD), with 50% confidence intervals. Points plotted are partial residuals which account for all variables in the model. The shade of the points corresponds to the moderator variable value.

<https://doi.org/10.1371/journal.pone.0300111.g002>

We then used GLZs to describe our data. The best GLZ selected for GRP94 expression included two statistically significant interaction terms (where the effect of one variable on the outcome was different depending on the values of the other variable). These were slope angle (steepness), given elevation, and radiant sky temperature given relative humidity (Table 1).

**Table 1. Generalised linear models (GLZs) for the best set of predictors against the standardised expression of two HSPs and the two oxidative stress related PTM biomarkers.** Model information includes all predictors, estimates, confidence intervals at 95% (CI), and p-value. Statistically significant predictors of  $\leq 0.05$  are shown in bold. The “.” indicated an interaction effect between two variables. “Slope” is the slope angle (measured in arc degrees) and elevation is measured in m a.s.l. TSKYC refers to radiant sky temperature ( $^{\circ}\text{C}$ ) and RH refers to relative humidity (%). SOLR refers to solar radiation ( $\text{W}/\text{m}^2$ ) (unshaded, adjusted for slope, aspect, and horizon angle). General model information includes the degrees of freedom (DF), the  $R^2$  (Nagelkerke’s pseudo  $R^2$  value), and AICc score. All models include all data points ( $n = 28$  observations).

Biomarker	Predictor	Estimate	CI	p-value	DF	$R^2$	AICc
GRP94	Intercept	16.3	14.5–18.0	<0.001	25	0.74	583.75
	Slope: Elevation	0.00003	0.000044–0.000016	<0.001			
	TSKYC: RH	-0.019	-0.023 -- 0.014	<0.001			
Carbonylation	Intercept	25.0	10.3–41.0	<0.001	24	0.34	592.93
	Sex	-7.11	-13.3 -- -1.33	<b>0.013</b>			
	TSKYC	-0.90	-2.0–0.123	0.076			
	SOLR: Elevation	-0.00001	-0.000012--0.000082	<b>0.013</b>			
HSP70	Intercept	10.07	9.7–10.4	<0.001	28	<0.001	623.13
3-NT	Intercept	15105.1	12975.6–17234.6	<0.001	28	<0.001	565.14

<https://doi.org/10.1371/journal.pone.0300111.t001>

We found that GRP94 expression increased with site steepness (slope angle), and this effect was more prominent at higher elevations (Fig 2D). On the other hand, as sky radiant temperature increased, GRP94 expression decreased, with lower expression when interacting with higher relative humidity (Fig 2E). The GLZ for HSP70 expression data was an intercept-only model, meaning none of the predictors explained the observed expression (Table 1).

### 3.2 Levels of protein carbonylation, but not of 3-NT, vary with environmental factors

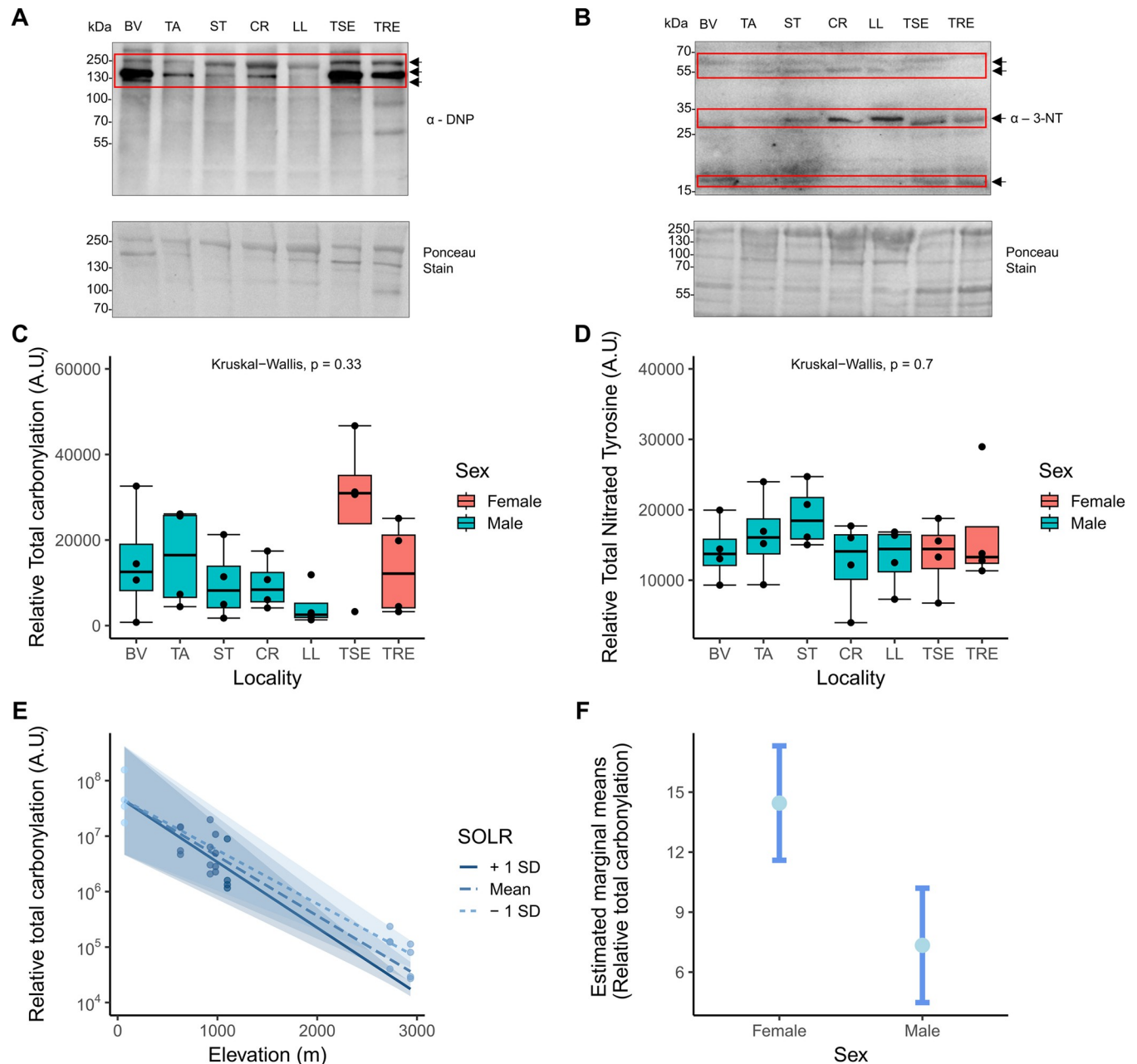
Next, to test for local variation in protein post-translational modifications associated with oxidative stress, we compared the standardised levels of protein carbonylation and 3-NT across localities (Fig 3A and 3B). Total carbonylation appeared to decrease slightly in median values with elevation, with exception of samples from the highest sites (taken from female animals) which were elevated, (Fig 3C), although this apparent decrease was not statistically significant (KW-H = 6.92, df = 6, p = 0.330). Total 3-NT remained constant across all localities (K-W = 3.83, df = 6, p = 0.700).

The selected GLZ for total carbonylation revealed aspect and slope-corrected solar radiation given elevation, and sex as statistically significant predictors (*post-hoc emmeans* table in S1 and S2 Tables in S1 File) (Table 1). Sky radiant temperature was also included in the final model, which showed a trend towards statistical significance (Table 1). The significant interaction term between elevation and solar radiation showed a decrease in total carbonylation with ascending elevation, at all levels of solar radiation ( $\text{W}/\text{m}^2$ ), which is unshaded, and adjusted for slope, aspect, and horizon angle (Fig 3E). Therefore, while solar radiation generally increases with elevation, in the case of our SOLR variable this was counteracted by steep sites receiving less radiation at the microclimatic scale, with vegetation also playing a role [71]. *Emmeans Post-hoc* analysis of the categorical variable “sex” as predictor within the total carbonylation model showed Tukey-adjusted estimated marginal means were higher in females than in males (Fig 3F). The final model selected for 3-NT was an intercept-only model, therefore none of the variables included were relevant to explain any variation in levels of total 3-NT.

### 3.3 Cross-talk between levels of carbonylation and GRP94

Next, we tested the hypothesis that GRP94 expression was inversely correlated with levels of protein carbonylation. We found a statistically strong negative association ( $R = -0.75$ ,

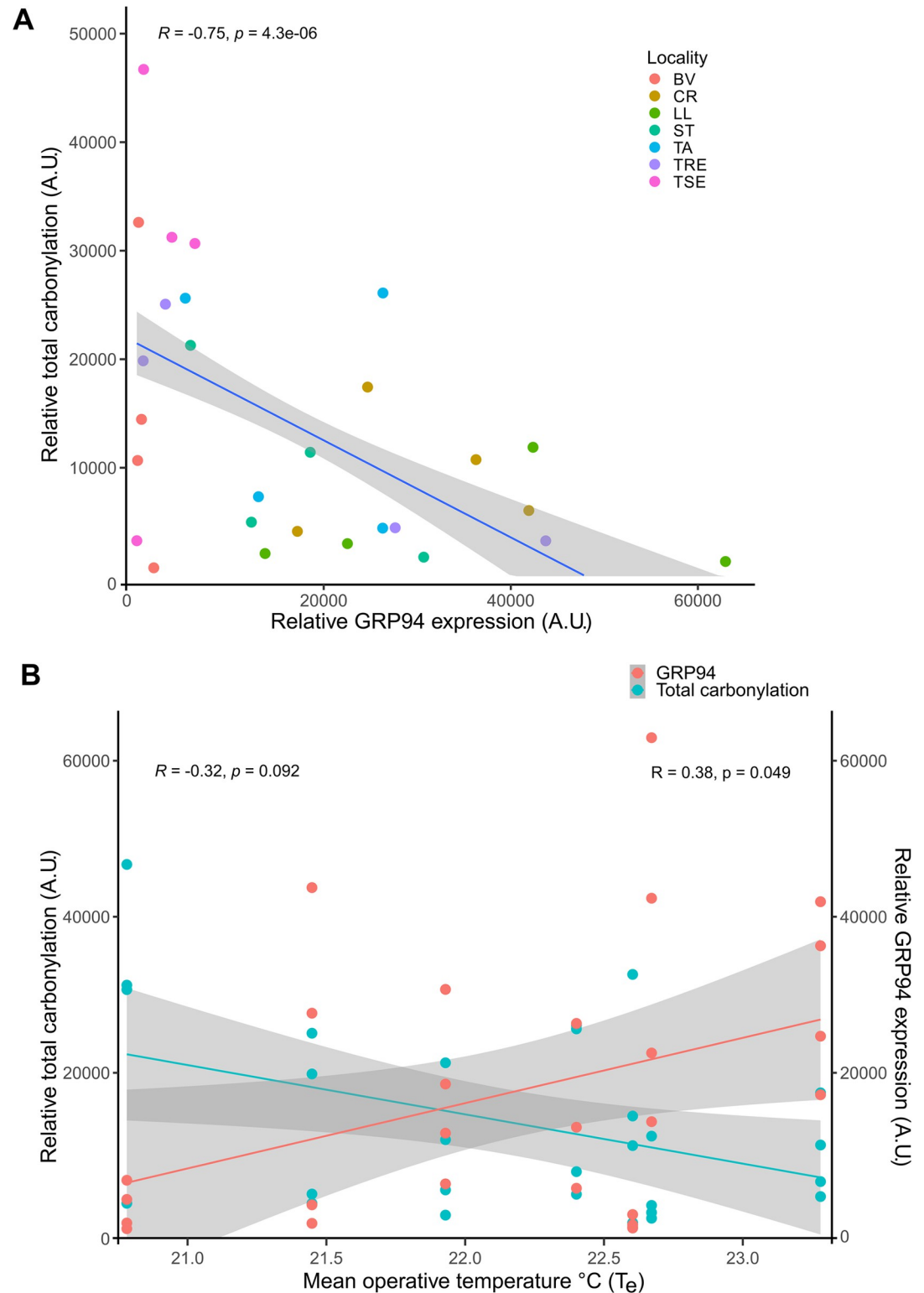




**Fig 3.** Representative Western blots (one of four biological replicates) for total carbonylation (A) and total 3-NT (B), labelled with molecular weights, and corresponding Ponceau S stain used as a loading control in the lower panel. Arrows and red boxes represent the bands quantified and the antibodies are labelled ( $\alpha$ -DNP for the carbonylation assay and  $\alpha$ -3-NT for 3-NT). C) Total carbonylation and D) 3-NT levels measured in arbitrary units (A.U) in *G. galloti* across different localities in Tenerife, from lowest to highest elevation. Sex is indicated by colour, where blue = males and red = females. E) Significant interaction terms determined from model selection for carbonylation, plotted on the  $\log_{10}$  scale. Elevation is plotted on the x-axis and the moderating predictor (solar radiation) is plotted as three separate lines, with a mean and  $\pm 1$  standard deviation (SD), with 50% confidence intervals. Points plotted are partial residuals which account for all variables in the model. The shade of the points corresponds to the moderator variable value. F) Estimated marginal means for total carbonylation, where the central light blue point indicates the estimated marginal mean, and the error bars represent the standard error of estimate.

<https://doi.org/10.1371/journal.pone.0300111.g003>

$p < 0.001$ ), where total carbonylation was high when GRP94 expression was low, and *vice versa*, when plotted as a linear fit (Fig 4A). We then explored whether  $T_e$  on the day of collection could help explain the respective levels of carbonylation and GRP94. We found a trend



**Fig 4.** A) Negative correlation between relative total carbonylation and relative GRP94 expression with a linear fit and a 95% confidence interval. Raw observations are plotted with colours referring to localities Spearman correlation coefficient and p-value are calculated. B) Total carbonylation and GRP94 expression plotted against modelled mean (24 h) operative temperature °C ( $T_e$ ). Observed values for each protein are plotted and coloured, and linear fit show 95% confidence intervals. R correlation coefficient and p-value calculated from Spearman's correlation coefficient for total carbonylation (left) and GRP94 (right).

<https://doi.org/10.1371/journal.pone.0300111.g004>

towards decreased carbonylation at higher  $T_e$ , and increased carbonylation at lower  $T_e$ , ( $R = -0.32$ ,  $p = 0.092$ ). Contrarily, GRP94 was elevated at higher  $T_e$  and decreased with lower  $T_e$  ( $R = -0.38$ ,  $p = 0.049$ ) mirroring the relationship seen in Fig 4A. These results, when taken together, suggest that a delicate interplay between protein homeostasis (through GRP94 expression levels) and oxidative stress load (protein carbonylation levels) relate to available microclimates, with  $T_e$  values demonstrating lizards occupying different habitats face different challenges in balancing GRP94 and oxidative damage.

#### 4. Discussion

The aim of this study was to shed light into the biochemical underpinnings of lizard physiological response to different environmental conditions. Ecological and phenotypic variation in *G. galloti* across Tenerife is well-studied and provided several examples of local adaptation across the island's diverse microhabitats [61, 68, 85–90]. When combined with phylogenetic studies detailing relatedness of populations on the island [66, 67, 91–93], a picture begins to emerge of how this species has evolved to cope with the varying environments on Tenerife. Despite this, a gap in knowledge remains regarding the molecular underpinnings of *G. galloti*'s adaptability.

Our results showed that the increase in GRP94 expression was determined by steeper slopes in the landscape, given higher elevations, and lower sky radiant temperature given lower relative humidity. Wind, drainage (leading to unsuitable vegetation and subsequent food sources associated with it [94]), sun exposure (with a  $-0.84$  collinearity score against zenith angle), and shelter site availability may all be affected by the steepness of a site and are important microhabitat parameters for lizards [95]. Sky radiant temperature describes the amount of radiation emitted from the atmosphere, which subsequently affects organisms on the surface [96]. Sky radiant temperature is determined by particles in the air and atmosphere, including water, on which it can scatter and be re-emitted, altering the amount of radiation reaching the surface [97]. Solar radiation can induce HSP expression to protect cells *via* its role in the protein folding response [98]. Decreased GRP94 expression with higher sky radiant temperature and lower humidity may put lizards experiencing these conditions at risk of cellular stress, which is supported by the observation of higher protein carbonylation in localities with low GRP94 expression. GRP94 is upregulated in response to ultraviolet (UV) irradiation and plays a key role in mammalian melanogenesis—a key protective mechanism from solar activity [99]. Its role in squamate melanogenesis is not studied, however, lizards tend to be darker at higher elevations [100–102], where it helps thermoregulation and protects against UV radiation [103, 104], and *G. galloti* itself has black coloration [105]. This is consistent with a trade-off between the metabolic cost of maintaining higher GRP94 expression and accumulating oxidative damage. Solar radiation and elevation have previously been described as pertinent variables regarding thermal stress in ectotherms, with greater exposure leading to more stress events [106]. Complex combinations of environmental stressors can be matched with equally complex physiological cascades, including heat shock proteins, to promote organism survival [107, 108]. If stronger radiative variables can cause cellular damage and protein degradation within more complex landscapes, a response from molecular chaperones repair mechanisms will be elicited, thus explaining the relationship in our data.

The decrease in total carbonylation levels was determined by the interaction of solar radiation with elevation and by sex. The gradient of the solar radiation modulator was unexpected, since it typically increases at high elevations. However, solar radiation at the micro level is corrected by topography and obstructing vegetation, as previously mentioned [71]. Regarding sex, females can be more sensitive to oxidative damage than males in unfavourable environments, with subsequent effects on their immune system [90, 109–111]. Our results show that

this is specific for protein carbonylation because there were no differences in the levels of 3-NT, which is associated with different oxidative stress pathways [112]. Females could be redirecting resources from maintaining constitutive GRP94 which, being glucose-regulated, comes at a metabolic cost. Protein expression can evolve to be “optimal” [4], therefore if resources are scarce such as at higher elevations there may be a cost to maintain constituent GRP94 [113–115]. This increases reproductive females vulnerability to extreme weather events in already stressful environments with limited resources [90, 116], as females may be unable to maintain GRP94 levels to a satisfactory extent to protect them against oxidative stress and protein carbonylation when supporting developing embryos [117]. Future research with a balanced design of males and females across localities is warranted for a more detailed assessment of such factors. The pattern of protein carbonylation observed here in a North-Western transect, matches that observed in *G. galloti* males in Southern elevational transects of *G. galloti* [68]. There, lowest total carbonylation was likewise observed in high elevation populations. Further support to this pattern comes from another lacertid species (*Psammodromus algirus*), which exhibited levels of oxidative stress decreasing at higher elevation [118] and higher elevations (with higher UV radiation) not inducing significantly more oxidative damage or an antioxidant response [119]. A high threshold level of solar radiation may be required for oxidative stress to occur, and that may also depend on other stressors [120].

A clear inverse relationship was found between GRP94 and carbonylation levels. Molecular chaperones or stress proteins can prevent protein carbonylation and cell death through calcium homeostasis [22, 121, 122]. In fish, it was demonstrated that HSPs directly protect against oxidative stress in natural populations [34, 123], highlighting their functional role in protein folding at both constitutive and inducible levels for organisms in stressful environments. [23] presented experimental evidence in mouse tissue of how GRP94 specifically plays a foundational role in protection against, and active reduction of oxidative stress (carbonylation) biomarkers in muscle tissues, highlighting its role as a cytoprotective agent. The role of GRP94 as a member of the HSP90 family is well characterised [20, 21]. However this is the first study to our knowledge linking its cytoprotective abilities with lower total carbonylation levels in natural populations of lizards. Our results demonstrate that molecular chaperones such as GRP94 not only play a role in the restoration of cellular homeostasis through its role as a protective agent, but also interact with evolutionary processes. These molecules can also act as a buffer to selection through their role in cellular stabilisation, which in turn can regulate the release of genetic variants [6, 124–126], impacting the evolvability of traits involving these molecules. The onset of expression of these markers should also be considered when studying acute and chronic stressors. Because we sampled lizards from wild populations, we must consider that they may have experienced different environmental stressors at different timescales, even within the same locality. Indeed, *G. galloti* may live up to 11 years in the populations analysed [68]. This may manifest as differences in the age and composition of studied tissues, depending on the longevity of markers following more acute stressors.

While HSP70 has been found to increase following heat stress in other lizard species [127–130], the uniform expression of HSP70 observed in this study can be explained by the lack of an acute cellular stress stimulus [131, 132], which aligns with reports that HSP70 baseline expression without being subjected to heat-shock experiments can be constant [127, 129, 133, 134].

By modelling mean  $T_e$ , we estimated average temperatures of an inanimate ‘lizard’, with zero heat capacity exposed to the same microclimate, which is regarded as a meaningful proxy of thermoregulatory opportunities [78, 135]. This was done for each population, over a 24 hour period.  $T_e$  does not account for behavioural thermoregulation and is therefore a distinct measurement from body temperature. Other metabolic regulators such as glucocorticoids have been shown to vary with  $T_e$ , [136]. However, it is important to acknowledge the potential

for long-term stability or baseline fluctuations in these biomarkers, which could be influenced by various factors such as daily and seasonal variation, or reproductive status, for which we currently lack information. As the  $T_e$  model includes data from all localities, it does not consider intraspecific differences in thermal preference and water loss between localities or subspecies [68], but serves as a guiding principle of the relationship between experienced  $T_e$  and biomarkers. The modelled values of  $T_e$  suggest an equilibrium point (at 21.9°C in our model, but note section in Methods on the interpretation of this parameter) around which lizards may undergo a trade-off between the metabolically costly maintenance of GRP94 at higher mean  $T_e$  to lower oxidative cell damage, and decreased metabolic rate at lower mean  $T_e$  through lower GRP94 baseline expression, leading to accumulation of oxidative damage [9]. Given the narrow thermal range either side of the equilibrium point, this gives importance to behavioural thermoregulation which can help keep the balance between these alternatives. Thermoregulatory behaviour may also be driven by factors other than energy expenditure [63], and the overall cost of oxidative stress and cellular protection is not well quantified. Despite this, there is strong evidence that lizards experiencing high temperatures vastly exceed their metabolic capacity [137]. Hydration is also an important factor to consider influencing thermoregulation [138, 139] which was not included in  $T_e$  modelling. However, relative humidity is considered in the GLZ as a significant predictor for GRP94 expression, interacting with sky radiative temperature, supporting the salience of hydric, as well as thermal pressures in *G. galloti* [90, 140, 141].

## 5. Conclusions

Molecular chaperones can exhibit plastic patterns in the physiological and metabolic response to environmental stressors [142], impacting evolutionary processes with respect to the environment [143]. The differences in constitutive biomarker expression across *G. galloti* populations (from the same phylogenetic lineage and independently of subspecific status) here may be an example for such plastic responses, and contribute to “frontloading”, “preparation for oxidative stress” or “pre-adaptation” [7–10]. GRP94 may even have survival consequences due to its involvement in melanogenesis, [99], with darker individuals better able to thermoregulate given levels of solar radiation [144]. Further investigation is required to explore the relationship between thermal-adapted phenotypes and behaviours, with molecular chaperones and cellular stress, and if there is an impact on evolutionary processes or population dynamics. The role of molecular chaperones are key in addressing adaptive capacity not just at the physiological level, but at the evolutionary level [6, 145]. These plastic responses we observed here may incur a cost, leading to equilibrium dynamics around energy use vs. cellular protection trade-offs at different operative temperatures. Our findings not only highlight GRP94 and carbonylation as useful biomarkers when assessing cellular stress and protection in wild populations, but also demonstrate that thermoregulatory behaviours (through operative temperature) provided by a range of microclimates are critical in maintaining a balanced internal biochemistry. This may assist in conservation of vulnerable lizards when measuring individual health and managing habitats.

## Supporting information

**S1 File. Supplementary methods, five supplementary figures, four supplementary tables, supplementary references.**

(DOCX)

**S1 Raw images. Original, raw western blot images.**

(DOCX)

## Acknowledgments

For support in the lab regarding protocols, techniques and troubleshooting, we thank Antonia Barry, Lucie Bilton, and Quentin Rodriguez-Barucg.

## Author Contributions

**Conceptualization:** Anamarija Žagar, Pedro Beltran-Alvarez, Katharina C. Wollenberg Valero.

**Data curation:** Edward Gilbert, Pedro Beltran-Alvarez, Katharina C. Wollenberg Valero.

**Formal analysis:** Edward Gilbert, Pedro Beltran-Alvarez, Katharina C. Wollenberg Valero.

**Funding acquisition:** Anamarija Žagar, Pedro Beltran-Alvarez, Katharina C. Wollenberg Valero.

**Investigation:** Edward Gilbert, Anamarija Žagar, Marta López-Darias, Rodrigo Megía-Palma, Max Dolton Jones, Miguel A. Carretero, Nina Serén, Pedro Beltran-Alvarez, Katharina C. Wollenberg Valero.

**Methodology:** Edward Gilbert, Anamarija Žagar, Marta López-Darias, Rodrigo Megía-Palma, Karen A. Lister, Max Dolton Jones, Miguel A. Carretero, Nina Serén, Pedro Beltran-Alvarez, Katharina C. Wollenberg Valero.

**Project administration:** Pedro Beltran-Alvarez, Katharina C. Wollenberg Valero.

**Resources:** Anamarija Žagar, Marta López-Darias, Rodrigo Megía-Palma, Karen A. Lister, Max Dolton Jones, Miguel A. Carretero, Nina Serén, Pedro Beltran-Alvarez, Katharina C. Wollenberg Valero.

**Software:** Edward Gilbert, Pedro Beltran-Alvarez, Katharina C. Wollenberg Valero.

**Supervision:** Pedro Beltran-Alvarez, Katharina C. Wollenberg Valero.

**Validation:** Edward Gilbert, Pedro Beltran-Alvarez, Katharina C. Wollenberg Valero.

**Visualization:** Edward Gilbert, Pedro Beltran-Alvarez, Katharina C. Wollenberg Valero.

**Writing – original draft:** Edward Gilbert, Pedro Beltran-Alvarez, Katharina C. Wollenberg Valero.

**Writing – review & editing:** Edward Gilbert, Anamarija Žagar, Marta López-Darias, Rodrigo Megía-Palma, Miguel A. Carretero, Nina Serén, Pedro Beltran-Alvarez, Katharina C. Wollenberg Valero.

## References

1. Hochachka PW, Somero GN. Biochemical adaptation: mechanism and process in physiological evolution. Oxford university press; 2002.
2. DeBiasse MB, Kelly MW. Plastic and Evolved Responses to Global Change: What Can We Learn from Comparative Transcriptomics? *J Hered*. 2016; 107: 71–81. <https://doi.org/10.1093/jhered/esv073> PMID: 26519514
3. Bradley BP, Shrader EA, Kimmel DG, Meiller JC. Protein expression signatures: an application of proteomics. *Mar Environ Res*. 2002; 54: 373–377. [https://doi.org/10.1016/s0141-1136\(02\)00115-0](https://doi.org/10.1016/s0141-1136(02)00115-0) PMID: 12408590
4. Dekel E, Alon U. Optimality and evolutionary tuning of the expression level of a protein. *Nature*. 2005; 436: 588–592. <https://doi.org/10.1038/nature03842> PMID: 16049495
5. Lu X, Li Y, Thunders M, Cavanagh J, Matthew C, Wang X, et al. Differential protein expression and localization of CYP450 enzymes in three species of earthworm; is this a reflection of environmental

- adaptation? *Chemosphere*. 2017; 171: 485–490. <https://doi.org/10.1016/j.chemosphere.2016.12.052> PMID: 28038420
6. Chen B, Feder ME, Kang L. Evolution of heat-shock protein expression underlying adaptive responses to environmental stress. *Mol Ecol*. 2018; 27: 3040–3054. <https://doi.org/10.1111/mec.14769> PMID: 29920826
  7. Barshis DJ, Ladner JT, Oliver TA, Seneca FO, Traylor-Knowles N, Palumbi SR. Genomic basis for coral resilience to climate change. *Proceedings of the National Academy of Sciences*. 2013; 110: 1387–1392. <https://doi.org/10.1073/pnas.1210224110> PMID: 23297204
  8. Collins M, Clark MS, Spicer JI, Truebano M. Transcriptional frontloading contributes to cross-tolerance between stressors. *Evol Appl*. 2021; 14: 577–587. <https://doi.org/10.1111/eva.13142> PMID: 33664796
  9. Giraud-Billoud M, Rivera-Ingraham GA, Moreira DC, Burmester T, Castro-Vazquez A, Carvajalino-Fernández JM, et al. Twenty years of the “Preparation for Oxidative Stress”(POS) theory: Ecophysiological advantages and molecular strategies. *Comp Biochem Physiol A Mol Integr Physiol*. 2019; 234: 36–49. <https://doi.org/10.1016/j.cbpa.2019.04.004> PMID: 30978470
  10. Rodgers EM, Gomez Isaza DF. The mechanistic basis and adaptive significance of cross-tolerance: a “pre-adaptation” to a changing world? *J Exp Biol*. 2023;226. <https://doi.org/10.1242/jeb.245644> PMID: 37288646
  11. Palumbi SR, Barshis DJ, Traylor-Knowles N, Bay RA. Mechanisms of reef coral resistance to future climate change. *Science*. 2014; 344: 895–898. <https://doi.org/10.1126/science.1251336> PMID: 24762535
  12. Burggren WW, Mendez-Sanchez JF. “Bet hedging” against climate change in developing and adult animals: roles for stochastic gene expression, phenotypic plasticity, epigenetic inheritance and adaptation. *Front Physiol*. 2023; 14: 1245875. <https://doi.org/10.3389/fphys.2023.1245875> PMID: 37869716
  13. Campbell-Staton SC, Winchell KM, Rochette NC, Fredette J, Maayan I, Schweizer RM, et al. Parallel selection on thermal physiology facilitates repeated adaptation of city lizards to urban heat islands. *Nat Ecol Evol*. 2020; 4: 652–658. <https://doi.org/10.1038/s41559-020-1131-8> PMID: 32152530
  14. Dubrez L, Causse S, Borges Bonan N, Dumétier B, Garrido C. Heat-shock proteins: chaperoning DNA repair. *Oncogene*. 2020; 39: 516–529. <https://doi.org/10.1038/s41388-019-1016-y> PMID: 31541194
  15. Whitley D, Goldberg SP, Jordan WD. Heat shock proteins: a review of the molecular chaperones. *J Vasc Surg*. 1999; 29: 748–751. [https://doi.org/10.1016/s0741-5214\(99\)70329-0](https://doi.org/10.1016/s0741-5214(99)70329-0) PMID: 10194511
  16. Murshid A, Prince TL, Lang B, Calderwood SK. Role of heat shock factors in stress-induced transcription. *Chaperones: Methods and Protocols*. 2018; 23–34. [https://doi.org/10.1007/978-1-4939-7477-1\\_2](https://doi.org/10.1007/978-1-4939-7477-1_2) PMID: 29177648
  17. Zhao Y, Luo L, Liu D-L, Huang J-H, Jiang S-G, Zhou F-L, et al. Effect of Acute Salinity Stress on Metabolism, Antioxidant Status, and Histological Structure of *Procambarus clarkii*. *Aquac Res*. 2023;2023.
  18. Sørensen JG. Application of heat shock protein expression for detecting natural adaptation and exposure to stress in natural populations. *Curr Zool*. 2010; 56: 703–713.
  19. Hoffmann AA, Sørensen JG, Loeschcke V. Adaptation of *Drosophila* to temperature extremes: bringing together quantitative and molecular approaches. *J Therm Biol*. 2003; 28: 175–216.
  20. Marzec M, Eletto D, Argon Y. GRP94: An HSP90-like protein specialized for protein folding and quality control in the endoplasmic reticulum. *Biochimica et Biophysica Acta (BBA)-Molecular Cell Research*. 2012; 1823: 774–787. <https://doi.org/10.1016/j.bbamcr.2011.10.013> PMID: 22079671
  21. Eletto D, Dersh D, Argon Y. GRP94 in ER quality control and stress responses. Elsevier; 2010.
  22. Pizzo P, Scapin C, Vitadello M, Florean C, Gorza L. Grp94 acts as a mediator of curcumin-induced antioxidant defence in myogenic cells. *J Cell Mol Med*. 2010; 14: 970–981. <https://doi.org/10.1111/j.1582-4934.2009.00681.x> PMID: 20569277
  23. Vitadello M, Gherardini J, Gorza L. The stress protein/chaperone Grp94 counteracts muscle disuse atrophy by stabilizing subsarcolemmal neuronal nitric oxide synthase. *Antioxid Redox Signal*. 2014; 20: 2479–2496. <https://doi.org/10.1089/ars.2012.4794> PMID: 24093939
  24. Sies H. What is oxidative stress? Springer; 2000.
  25. Schröder P, Krutmann J. Environmental oxidative stress—Environmental sources of ROS. *Reactions, Processes: Oxidants and Antioxidant Defense Systems*. 2005; 19–31.
  26. Radi R. Nitric oxide, oxidants, and protein tyrosine nitration. *Proceedings of the National Academy of Sciences*. 2004; 101: 4003–4008. <https://doi.org/10.1073/pnas.0307446101> PMID: 15020765

27. Ischiropoulos H. Protein tyrosine nitration—an update. *Arch Biochem Biophys.* 2009; 484: 117–121. <https://doi.org/10.1016/j.abb.2008.10.034> PMID: 19007743
28. Sfyri PP, Yuldasheva NY, Tzimou A, Giallourou N, Crispi V, Aburima A, et al. Attenuation of oxidative stress-induced lesions in skeletal muscle in a mouse model of obesity-independent hyperlipidaemia and atherosclerosis through the inhibition of Nox2 activity. *Free Radical Biology and Medicine.* 2018; 129: 504–519. <https://doi.org/10.1016/j.freeradbiomed.2018.10.422> PMID: 30342191
29. Hauck AK, Huang Y, Hertzell AV, Bernlohr DA. Adipose oxidative stress and protein carbonylation. *J Biol Chem.* 2019; 294: 1083–1088. <https://doi.org/10.1074/jbc.R118.003214> PMID: 30563836
30. Aguilar P, Pérez i de Lanuza G, Martínez-Gil H, Dajčman U, Simčič T, Pinho C, et al. Color morphs of the fire salamander are discriminated at night by conspecifics and predators. *J Zool.* 2023. <https://doi.org/10.1111/jzo.13131>
31. Korsloot A, van Gestel CAM, Van Straalen NM. Environmental stress and cellular response in arthropods. CRC press; 2004.
32. Kalmar B, Greensmith L. Induction of heat shock proteins for protection against oxidative stress. *Adv Drug Deliv Rev.* 2009; 61: 310–318. <https://doi.org/10.1016/j.addr.2009.02.003> PMID: 19248813
33. Rodgers KJ, Ford JL, Brunk UT. Heat shock proteins: keys to healthy ageing? *Redox Rep.* 2009; 14: 147–153. <https://doi.org/10.1179/135100009X392593> PMID: 19695121
34. Oksala NKJ, Ekmekçi FG, Özsoy E, Kirankaya Ş, Kokkola T, Emecen G, et al. Natural thermal adaptation increases heat shock protein levels and decreases oxidative stress. *Redox biology.* 2014; 3: 25–28. <https://doi.org/10.1016/j.redox.2014.10.003> PMID: 25462062
35. Chen C, Holyoak M, Xu J, de Oliveira Caetano GH, Wang Y. Range restriction, climate variability and human-related risks imperil lizards world-wide. *Glob Ecol Biogeogr.* 2023; 32: 780–792.
36. Cosendey BN, Rocha CFD, Menezes VA. Climate change, lizard populations, and species vulnerability/persistence: trends in ecological and predictive climate studies. *Environ Dev Sustainability.* 2022. <https://doi.org/10.1007/s10668-022-02427-y>
37. Sinervo B, Méndez-de-la-Cruz F, Miles DB, Heulin B, Bastiaans E, Villagrán-Santa Cruz M, et al. Erosion of lizard diversity by climate change and altered thermal niches. *Science.* 2010; 328: 894–899. <https://doi.org/10.1126/science.1184695> PMID: 20466932
38. Sinervo B, Lara Reséndiz RA, Miles DB, Lovich JE, Rosen PC, Gadsden H, et al. Climate change and collapsing thermal niches of desert reptiles and amphibians: Assisted migration and acclimation rescue from extirpation. *Sci Total Environ.* 2024; 908: 168431. <https://doi.org/10.1016/j.scitotenv.2023.168431> PMID: 37951272
39. Wiens JJ, Camacho A, Goldberg A, Jezkova T, Kaplan ME, Lambert SM, et al. Climate change, extinction, and Sky Island biogeography in a montane lizard. *Mol Ecol.* 2019; 28: 2610–2624. <https://doi.org/10.1111/mec.15073> PMID: 30843297
40. Bodensteiner BL, Agudelo-Cantero GA, Arietta AZA, Gunderson AR, Muñoz MM, Refsnider JM, et al. Thermal adaptation revisited: How conserved are thermal traits of reptiles and amphibians? *J Exp Zool A Ecol Integr Physiol.* 2021; 335: 173–194. <https://doi.org/10.1002/jez.2414> PMID: 32970931
41. Logan ML, Cox RM, Calsbeek R. Natural selection on thermal performance in a novel thermal environment. *Proceedings of the National Academy of Sciences.* 2014; 111: 14165–14169.
42. Muñoz MM. The Bogert effect, a factor in evolution. *Evolution.* 2022; 76: 49–66. <https://doi.org/10.1111/evo.14388> PMID: 34676550
43. Logan ML, Cox CL. Genetic Constraints, Transcriptome Plasticity, and the Evolutionary Response to Climate Change. *Front Genet.* 2020; 11: 538226. <https://doi.org/10.3389/fgene.2020.538226> PMID: 33193610
44. Cowles RB, Bogert CM. A preliminary study of the thermal requirements of desert reptiles. *Bulletin of the AMNH*; v. 83, article 5. 1944. Available: <https://digitallibrary.amnh.org/handle/2246/1237>
45. Huey RB, Bennett AF. Phylogenetic studies of coadaptation: preferred temperatures versus optimal performance temperatures of lizards. *Evolution.* 1987; 41: 1098–1115. <https://doi.org/10.1111/j.1558-5646.1987.tb05879.x> PMID: 28563407
46. Seebacher F, Franklin CE. Physiological mechanisms of thermoregulation in reptiles: a review. *J Comp Physiol B.* 2005; 175: 533–541. <https://doi.org/10.1007/s00360-005-0007-1> PMID: 16047177
47. Wollenberg Valero KC, Garcia-Porta J, Irisarri I, Feugere L, Bates A, Kirchhof S, et al. Functional genomics of abiotic environmental adaptation in lacertid lizards and other vertebrates. *J Anim Ecol.* 2022; 91: 1163–1179. <https://doi.org/10.1111/1365-2656.13617> PMID: 34695234
48. Bakken GS. Measurement and application of operative and standard operative temperatures in ecology. *Am Zool.* 1992; 32: 194–216.



49. Sunday JM, Bates AE, Kearney MR, Colwell RK, Dulvy NK, Longino JT, et al. Thermal-safety margins and the necessity of thermoregulatory behavior across latitude and elevation. *Proc Natl Acad Sci U S A*. 2014; 111: 5610–5615. <https://doi.org/10.1073/pnas.1316145111> PMID: 24616528
50. Herrando-Pérez S, Belliure J, Ferri-Yáñez F, van den Burg MP, Beukema W, Araújo MB, et al. Water deprivation drives intraspecific variability in lizard heat tolerance. *Basic Appl Ecol*. 2020; 48: 37–51.
51. Huey RB. Behavioral thermoregulation in lizards: importance of associated costs. *Science*. 1974; 184: 1001–1003. <https://doi.org/10.1126/science.184.4140.1001> PMID: 4826166
52. Adolph SC, Porter WP. Temperature, activity, and lizard life histories. *Am Nat*. 1993; 142: 273–295. <https://doi.org/10.1086/285538> PMID: 19425979
53. Angilletta MJ. Thermal adaptation: a theoretical and empirical synthesis. 2009.
54. Grant BW, Dunham AE. Thermally imposed time constraints on the activity of the desert lizard *Sceloporus merriami*. *Ecology*. 1988; 69: 167–176.
55. Araújo MB, Ferri-Yáñez F, Bozinovic F, Marquet PA, Valladares F, Chown SL. Heat freezes niche evolution. *Ecol Lett*. 2013; 16: 1206–1219. <https://doi.org/10.1111/ele.12155> PMID: 23869696
56. Camacho A, Rodrigues MT, Jayyusi R, Harun M, Geraci M, Carretero MA, et al. Does heat tolerance actually predict animals' geographic thermal limits? *Sci Total Environ*. 2024; 170165. <https://doi.org/10.1016/j.scitotenv.2024.170165> PMID: 38242475
57. Huey RB, Kingsolver JG. Evolution of thermal sensitivity of ectotherm performance. *Trends Ecol Evol*. 1989; 4: 131–135. [https://doi.org/10.1016/0169-5347\(89\)90211-5](https://doi.org/10.1016/0169-5347(89)90211-5) PMID: 21227334
58. Denlinger DL, Lee RE Jr. *Low Temperature Biology of Insects*. Cambridge University Press; 2010.
59. Megía-Palma R, Barja I, Barrientos R. Fecal glucocorticoid metabolites and ectoparasites as biomarkers of heat stress close to roads in a Mediterranean lizard. *Sci Total Environ*. 2022; 802: 149919. <https://doi.org/10.1016/j.scitotenv.2021.149919> PMID: 34525719
60. Muñoz MM, Stimola MA, Algar AC, Conover A, Rodríguez AJ, Landestoy MA, et al. Evolutionary stasis and lability in thermal physiology in a group of tropical lizards. *Proc Biol Sci*. 2014; 281: 20132433. <https://doi.org/10.1098/rspb.2013.2433> PMID: 24430845
61. Algar AC, López-Darias M. Sex-specific responses of phenotypic diversity to environmental variation. *Ecography*. 2016; 39: 715–725.
62. Albaladejo G, Rodríguez N, Rodríguez-Concepción B, Nogales M, Vences M. Limited ecophysiological variation in *Gallotia galloti* (Oudart, 1839) lizards across an elevational gradient of over 3,500 meters (Squamata: Lacertidae). *Herpetol Notes*. 2022; 15: 87–96.
63. Basson CH, Levy O, Angilletta MJ Jr, Clusella-Trullas S. Lizards paid a greater opportunity cost to thermoregulate in a less heterogeneous environment. *Funct Ecol*. 2017; 31: 856–865.
64. Belasen A, Brock K, Li B, Chremou D, Valakos E, Pafilis P, et al. Fine with heat, problems with water: microclimate alters water loss in a thermally adapted insular lizard. *Oikos*. 2017; 126: 447–457.
65. Jiménez-Robles O, De la Riva I. Lizards in the mist: Thermal niches constrained by habitat and microclimates in the Andes of southern Bolivia. *J Biogeogr*. 2019; 46: 1676–1686.
66. Thorpe RS, Mcgregor D, Cumming AM. Population evolution of western Canary Island lizards (*Gallotia galloti*): 4-base endonuclease restriction fragment length polymorphisms of mitochondrial DNA. *Biol J Linn Soc Lond*. 1993; 49: 219–227.
67. Brown RP, Hoskisson PA, Welton J-H, Báez M. Geological history and within-island diversity: a debris avalanche and the Tenerife lizard *Gallotia galloti*. *Mol Ecol*. 2006; 15: 3631–3640.
68. Serén N, Megía-Palma R, Simčič T, Krofel M, Guarino FM, Pinho C, et al. Functional responses in a lizard along a 3.5-km altitudinal gradient. *J Biogeogr*. 2023; 50: 2042–2056.
69. Schneider CA, Rasband WS, Eliceiri KW. NIH Image to ImageJ: 25 years of image analysis. *Nat Methods*. 2012; 9: 671–675. <https://doi.org/10.1038/nmeth.2089> PMID: 22930834
70. Bass JJ, Wilkinson DJ, Rankin D, Phillips BE, Szewczyk NJ, Smith K, et al. An overview of technical considerations for Western blotting applications to physiological research. *Scand J Med Sci Sports*. 2017; 27: 4–25. <https://doi.org/10.1111/sms.12702> PMID: 27263489
71. Maclean I, Mosedale JR, Bennie JJ. Microclima: An R package for modelling meso- and microclimate. *Methods Ecol Evol*. 2019; 10: 280–290.
72. Kearney M. NicheMapR: R implementation of Niche Mapper software for biophysical modelling. R package. 2023. Available: <https://github.com/mrke/NicheMapR>
73. Rutkowski DT, Arnold SM, Miller CN, Wu J, Li J, Gunnison KM, et al. Adaptation to ER stress is mediated by differential stabilities of pro-survival and pro-apoptotic mRNAs and proteins. *PLoS Biol*. 2006; 4: e374. <https://doi.org/10.1371/journal.pbio.0040374> PMID: 17090218

74. Staron M, Wu S, Hong F, Stojanovic A, Du X, Bona R, et al. Heat-shock protein gp96/grp94 is an essential chaperone for the platelet glycoprotein Ib-IX-V complex. *Blood, The Journal of the American Society of Hematology*. 2011; 117: 7136–7144. <https://doi.org/10.1182/blood-2011-01-330464> PMID: 21576699
75. USGS. EarthExplorer. In: EarthExplorer [Internet]. 2023 [cited 25 May 2023]. Available: <https://earthexplorer.usgs.gov/>
76. Buckley LB, Briones Ortiz BA, Caruso I, John A, Levy O, Meyer AV, et al. TrenchR: An R package for modular and accessible microclimate and biophysical ecology. *PLOS Climate*. 2023; 2: e0000139.
77. Garcia-Porta J, Irisarri I, Kirchner M, Rodríguez A, Kirchhof S, Brown JL, et al. Environmental temperatures shape thermal physiology as well as diversification and genome-wide substitution rates in lizards. *Nat Commun*. 2019; 10: 4077. <https://doi.org/10.1038/s41467-019-11943-x> PMID: 31501432
78. Fei T, Skidmore AK, Venus V, Wang T, Schlerf M, Toxopeus B, et al. A body temperature model for lizards as estimated from the thermal environment. *J Therm Biol*. 2012; 37: 56–64.
79. Wei T, Simko V, Levy M, Xie Y, Jin Y, Zemla J. Package “corrplot.” *Statistician*. 2017; 56: e24.
80. Calcagno V, de Mazancourt C. glmulti: An R Package for Easy Automated Model Selection with (Generalized) Linear Models. *J Stat Softw*. 2010; 34: 1–29.
81. Anderson D, Burnham K. Model selection and multi-model inference. Second NY: Springer-Verlag. 2004; 63: 10.
82. Desboulets LDD. A review on variable selection in regression analysis. *Econometrics*. 2018; 6: 45.
83. Long JA. Interactions: Comprehensive, user-friendly toolkit for probing interactions. R package version 1.1.0. The Comprehensive R Archive Network. 2019.
84. Lenth R, Singmann H, Love J, Buerkner P, Herve M. Package “emmeans.” R package version. 2019;1.
85. Molina-Borja M. Spatio-temporal distribution of aggressive and courting behaviors in the lizard *Gallotia galloti* from Tenerife, the Canary Islands. *J Ethol*. 1987; 5: 11–15.
86. Thorpe RS, Baez M. Geographic variation within an island: univariate and multivariate contouring of scalation, size, and shape of the lizard *Gallotia galloti*. *Evolution*. 1987; 41: 256–268.
87. Thorpe RS, Brown RP. Microgeographic variation in the colour pattern of the lizard *Gallotia galloti* within the island of Tenerife: distribution, pattern and hypothesis testing. *Biol J Linn Soc Lond*. 1989; 38: 303–322.
88. Molina-Borja M, Padron-Fumero M, Alfonso-Martin T. Morphological and behavioural traits affecting the intensity and outcome of male contests in *Gallotia galloti galloti* (family lacertidae). *Ethology*. 1998; 104: 314–322.
89. Molina-Borja M, Font E, Mesa Avila G. Sex and population variation in ultraviolet reflectance of colour patches in *Gallotia galloti* (Fam. Lacertidae) from Tenerife (Canary Islands). *J Zool*. 2006; 268: 193–206.
90. Megía-Palma R, Arregui L, Pozo I, Žagar A, Serén N, Carretero MA, et al. Geographic patterns of stress in insular lizards reveal anthropogenic and climatic signatures. *Sci Total Environ*. 2020; 749: 141655. <https://doi.org/10.1016/j.scitotenv.2020.141655> PMID: 32836132
91. Thorpe RS, McGregor DP, Cumming AM, Jordan WC. DNA evolution and colonization sequence of island lizards in relation to geological history: mtDNA RFLP, cytochrome b, cytochrome oxidase, 12s rRNA sequence, and nuclear RAPD analysis. *Evolution*. 1994; 48: 230–240. <https://doi.org/10.1111/j.1558-5646.1994.tb01309.x> PMID: 28568298
92. Richard M, Thorpe RS. Can microsatellites be used to infer phylogenies? Evidence from population affinities of the Western Canary Island lizard (*Gallotia galloti*). *Mol Phylogenet Evol*. 2001; 20: 351–360.
93. Cox SC, Carranza S, Brown RP. Divergence times and colonization of the Canary Islands by *Gallotia* lizards. *Mol Phylogenet Evol*. 2010; 56: 747–757.
94. Valido A, Nogales M, Medina FM. Fleshy fruits in the diet of Canarian lizards *Gallotia galloti* (Lacertidae) in a xeric habitat of the island of Tenerife. *J Herpetol*. 2003; 37: 741–747.
95. Valenzuela-Ceballos S, Castañeda G, Rioja-Paradela T, Carrillo-Reyes A, Bastiaans E. Variation in the thermal ecology of an endemic iguana from Mexico reduces its vulnerability to global warming. *J Therm Biol*. 2015; 48: 56–64. <https://doi.org/10.1016/j.jtherbio.2014.12.011> PMID: 25660631
96. Gliah O, Kruczek B, Etemad SG, Thibault J. The effective sky temperature: an enigmatic concept. *Heat Mass Transfer*. 2011; 47: 1171–1180.
97. Allan RP, Shine KP, Slingo A, Pamment JA. The dependence of clear-sky outgoing long-wave radiation on surface temperature and relative humidity. *Quart J Roy Meteor Soc*. 1999; 125: 2103–2126.

98. Trautinger F, Kindás-Mügge I, Knobler RM, Hönigsmann H. Stress proteins in the cellular response to ultraviolet radiation. *J Photochem Photobiol B*. 1996; 35: 141–148. [https://doi.org/10.1016/s1011-1344\(96\)07344-7](https://doi.org/10.1016/s1011-1344(96)07344-7) PMID: 8933720
99. Zhang Y, Helke KL, Coelho SG, Valencia JC, Hearing VJ, Sun S, et al. Essential role of the molecular chaperone gp96 in regulating melanogenesis. *Pigment Cell Melanoma Res*. 2014; 27: 82–89. <https://doi.org/10.1111/pcmr.12165> PMID: 24024552
100. Fischer J, Lindenmayer DB. The sensitivity of lizards to elevation: A case study from south-eastern Australia. *Diversity and Distributions*. 2005; 11: 225–233.
101. Seddon RJ, Hews DK. Phenotypic correlates of melanization in two *Sceloporus occidentalis* (Phrynosomatidae) populations: behavior, androgens, stress reactivity, and ectoparasites. *Physiol Behav*. 2016; 163: 70–80.
102. González-Morales JC, Rivera-Rea J, Moreno-Rueda G, Bastiaans E, Castro-López M, Fajardo V. Fast and dark: The case of Mezquite lizards at extreme altitude. *J Therm Biol*. 2021; 102: 103115. <https://doi.org/10.1016/j.jtherbio.2021.103115> PMID: 34863479
103. Clusella-Trullas S, Wyk JH, Spotila JR. Thermal benefits of melanism in cordylid lizards: a theoretical and field test. *Ecology*. 2009; 90: 2297–2312. <https://doi.org/10.1890/08-1502.1> PMID: 19739391
104. Reguera S, Zamora-Camacho FJ, Moreno-Rueda G. The lizard *Psammotromus algirus* (Squamata: Lacertidae) is darker at high altitudes. *Biol J Linn Soc Lond*. 2014; 112: 132–141.
105. Font E, Molina-Borja M, Pérez-Mellado V, Riera N, Perera A. Ultraviolet reflectance of color patches in *Gallotia galloti* from Tenerife, Canary Islands. *The Biology of Lacertid Lizards Institut Menorquí d'Estudis, Menorca*. 2004; 201–221.
106. Buckley LB, Miller EF, Kingsolver JG. Ectotherm thermal stress and specialization across altitude and latitude. *Integr Comp Biol*. 2013; 53: 571–581. <https://doi.org/10.1093/icb/ict026> PMID: 23620253
107. Morimoto RI. Regulation of the heat shock transcriptional response: cross talk between a family of heat shock factors, molecular chaperones, and negative regulators. *Genes Dev*. 1998; 12: 3788–3796. <https://doi.org/10.1101/gad.12.24.3788> PMID: 9869631
108. Sokolova I. Bioenergetics in environmental adaptation and stress tolerance of aquatic ectotherms: linking physiology and ecology in a multi-stressor landscape. *J Exp Biol*. 2021; 224. <https://doi.org/10.1242/jeb.236802> PMID: 33627464
109. Tobler M, Ballen C, Healey M, Wilson M, Olsson M. Oxidant trade-offs in immunity: an experimental test in a lizard. *PLoS One*. 2015; 10: e0126155. <https://doi.org/10.1371/journal.pone.0126155> PMID: 25938441
110. Dupoué A, Blaimont P, Rozen-Rechels D, Richard M, Meylan S, Clobert J, et al. Water availability and temperature induce changes in oxidative status during pregnancy in a viviparous lizard. *Funct Ecol*. 2020; 34: 475–485.
111. Han X, Hao X, Wang Y, Wang X, Teng L, Liu Z, et al. Experimental warming induces oxidative stress and immunosuppression in a viviparous lizard, *Eremias multiocellata*. *J Therm Biol*. 2020; 90: 102595.
112. Ahsan H. 3-Nitrotyrosine: A biomarker of nitrogen free radical species modified proteins in systemic autoimmunogenic conditions. *Hum Immunol*. 2013; 74: 1392–1399. <https://doi.org/10.1016/j.humimm.2013.06.009> PMID: 23777924
113. French SS, Moore MC. Immune function varies with reproductive stage and context in female and male tree lizards, *Urosaurus ornatus*. *Gen Comp Endocrinol*. 2008; 155: 148–156.
114. French SS, DeNardo DF, Moore MC. Trade-offs between the reproductive and immune systems: facultative responses to resources or obligate responses to reproduction? *Am Nat*. 2007; 170: 79–89. <https://doi.org/10.1086/518569> PMID: 17853993
115. French SS, Johnston GIH, Moore MC. Immune activity suppresses reproduction in food-limited female tree lizards *Urosaurus ornatus*. *Funct Ecol*. 2007; 21: 1115–1122.
116. Carretero MA. Reproductive cycles in Mediterranean lacertids: plasticity and constraints. *Reproductive Cycles in Mediterranean Lacertids*. 2006; 1000–1022.
117. Tylan C, Horvat-Gordon M, Bartell PA, Langkilde T. Ecoimmune reallocation in a native lizard in response to the presence of invasive, venomous fire ants in their shared environment. *J Exp Zool A Ecol Integr Physiol*. 2020; 333: 792–804. <https://doi.org/10.1002/jez.2418> PMID: 33038069
118. Reguera S, Zamora-Camacho FJ, Trenzado CE, Sanz A, Moreno-Rueda G. Oxidative stress decreases with elevation in the lizard *Psammotromus algirus*. *Comp Biochem Physiol A Mol Integr Physiol*. 2014; 172: 52–56.
119. Reguera S, Zamora-Camacho FJ, Melero E, Garcia-Mesa S, Trenzado CE, Cabrerizo MJ, et al. Ultraviolet radiation does not increase oxidative stress in the lizard *Psammotromus algirus* along an elevational gradient. *Comp Biochem Physiol A Mol Integr Physiol*. 2015; 183: 20–26.

120. Moreira DC, Sabino MA da CT, Minari M, Kuzniewski FTB, Angelini R, Hermes-Lima M. The role of solar radiation and tidal emersion on oxidative stress and glutathione synthesis in mussels exposed to air. *PeerJ*. 2023;11. <https://doi.org/10.7717/peerj.15345> PMID: 37193036
121. Liu H, Miller E, van de Water B, Stevens JL. Endoplasmic reticulum stress proteins block oxidant-induced Ca<sup>2+</sup> increases and cell death. *J Biol Chem*. 1998; 273: 12858–12862. <https://doi.org/10.1074/jbc.273.21.12858> PMID: 9582315
122. Bando Y, Katayama T, Aleshin AN, Manabe T, Tohyama M. GRP94 reduces cell death in SH-SY5Y cells perturbed calcium homeostasis. *Apoptosis*. 2004; 9: 501–508. <https://doi.org/10.1023/B:APPT.0000031446.95532.ad> PMID: 15192333
123. Padmini E, Rani MU. Impact of seasonal variation on HSP70 expression quantitated in stressed fish hepatocytes. *Comp Biochem Physiol B Biochem Mol Biol*. 2008; 151: 278–285. <https://doi.org/10.1016/j.cbpb.2008.07.011> PMID: 18694842
124. Korcsmáros T, Kovács IA, Szalay MS, Csermely P. Molecular chaperones: the modular evolution of cellular networks. *J Biosci*. 2007; 32: 441–446. <https://doi.org/10.1007/s12038-007-0043-y> PMID: 17536163
125. Tomala K, Korona R. Molecular chaperones and selection against mutations. *Biol Direct*. 2008; 3: 5. <https://doi.org/10.1186/1745-6150-3-5> PMID: 18298866
126. Yuqi T, Songtao YE, Jia LIU, Others. Molecular chaperones promote protein stability and evolution. *Synthetic Biology Journal*. 2022; 3: 445.
127. Ulmasov KA, Shammakov S, Karaev K, Evgen'ev MB. Heat shock proteins and thermoresistance in lizards. *Proceedings of the National Academy of Sciences*. 1992; 89: 1666–1670. <https://doi.org/10.1073/pnas.89.5.1666> PMID: 1542659
128. Ulmasov K, Zatsepina O, Evgen'ev M, Molodtsov V. Natural body temperature and kinetics of heat-shock protein synthesis in the toad-headed agamid lizard *Phrynocephalus interscapularis*. *Amphib-reptil*. 1999; 20: 1–9.
129. Gao J, Zhang W, Dang W, Mou Y, Gao Y, Sun B-J, et al. Heat shock protein expression enhances heat tolerance of reptile embryos. *Proceedings of the Royal Society B: Biological Sciences*. 2014; 281: 20141135.
130. Heikkilä JJ. The expression and function of hsp30-like small heat shock protein genes in amphibians, birds, fish, and reptiles. *Comp Biochem Physiol A Mol Integr Physiol*. 2017; 203: 179–192. <https://doi.org/10.1016/j.cbpa.2016.09.011> PMID: 27649598
131. Miyagawa S, Yatsu R, Iguchi T. Environmental Control of Sex Determination and Differentiation in Reptiles. In: Kobayashi K, Kitano T, Iwao Y, Kondo M, editors. *Reproductive and Developmental Strategies: The Continuity of Life*. Tokyo: Springer Japan; 2018. pp. 367–390.
132. Lindquist S. The heat-shock response. *Annu Rev Biochem*. 1986; 55: 1151–1191. <https://doi.org/10.1146/annurev.bi.55.070186.005443> PMID: 2427013
133. McMillan DM, Irschick DJ, Rees BB. Geographic variation in the effects of heat exposure on maximum sprint speed and Hsp70 expression in the western fence lizard *Sceloporus occidentalis*. *Physiol Biochem Zool*. 2011; 84: 573–582.
134. Dang W, Xu N, Zhang W, Gao J, Fan H, Lu H. Differential regulation of Hsp70 expression in six lizard species under normal and high environmental temperatures. *Pak J Zool*. 2018;50. <https://doi.org/10.17582/journal.pjz/2018.50.3.1043.1051>
135. Shine R, Kearney M. Field studies of reptile thermoregulation: how well do physical models predict operative temperatures? *Funct Ecol*. 2001; 282–288.
136. Rubalcaba JG, Jimeno B. Biophysical models unravel associations between glucocorticoids and thermoregulatory costs across avian species. *Funct Ecol*. 2022; 36: 64–72.
137. Doucette LI, Duncan RP, Osborne WS, Evans M, Georges A, Gruber B, et al. Climate warming drives a temperate-zone lizard to its upper thermal limits, restricting activity, and increasing energetic costs. *Sci Rep*. 2023; 13: 9603. <https://doi.org/10.1038/s41598-023-35087-7> PMID: 37311881
138. Sannolo M, Carretero MA. Dehydration constrains thermoregulation and space use in lizards. *PLoS One*. 2019; 14: e0220384. <https://doi.org/10.1371/journal.pone.0220384> PMID: 31344149
139. Sannolo M, Civantos E, Martín J, Carretero MA. Variation in field body temperature and total evaporative water loss along an environmental gradient in a diurnal ectotherm. *J Zool*. 2020; 310: 221–231.
140. Vernet R, Castanet J, Baez M. Comparative water flux and daily energy expenditure of lizards of the genus *Gallotia* (Lacertidae) from the Canary Islands. *Amphib-reptil*. 1995; 16: 55–66.
141. Megía-Palma R, Palomar G, Martínez J, Antunes B, Dudek K, Žagar A, et al. Lizard host abundances and climatic factors explain phylogenetic diversity and prevalence of blood parasites on an oceanic island. *Mol Ecol*. 2024; e17276.

142. Tytell M, Hooper PL. Heat shock proteins: new keys to the development of cytoprotective therapies. *Emerging Therapeutic Targets*. 2001; 5: 267–287.
143. Queitsch C, Sangster TA, Lindquist S. Hsp90 as a capacitor of phenotypic variation. *Nature*. 2002; 417: 618–624. <https://doi.org/10.1038/nature749> PMID: 12050657
144. Clusella Trullas S, van Wyk JH, Spotila JR. Thermal melanism in ectotherms. *J Therm Biol*. 2007; 32: 235–245.
145. Sangster TA, Lindquist S, Queitsch C. Under cover: causes, effects and implications of Hsp90-mediated genetic capacitance. *Bioessays*. 2004; 26: 348–362. <https://doi.org/10.1002/bies.20020> PMID: 15057933