

Investigations of Chemical Element Distributions in Soil, North Macedonia—A Review

Trajče Stafilov ^{1,*} , Robert Šajn ^{2,*} and Jasminka Alijagić ² 

¹ Institute of Chemistry, Faculty of Natural Sciences and Mathematics, Ss. Cyril and Methodius University, Arhimedova 5, 1000 Skopje, North Macedonia

² Geological Survey of Slovenia, Dimičeva 14, 1000 Ljubljana, Slovenia; jasminka.alijagic@geo-zs.si

* Correspondence: trajcest@pmf.ukim.mk (T.S.); robert.sajn@geo-zs.si (R.Š.); Tel.: +389-70-350756 (T.S.)

Abstract: This review article considers the following aspects: naturally distributed chemical elements and their enrichments, and the increased occurrence of PTEs due to anthropogenic and urban activities, as well as due to the geochemical uniqueness of certain geochemical landscapes, depending on the lithological environment. The review article is the result of many years of successful cooperation between the Geological Survey of Slovenia and the Faculty of Natural Sciences in Skopje, Ss. Cyril and Methodius University in Skopje, as well as several other institutions from North Macedonia, Russia and Romania but, also, through the voluntary and enthusiastic work of Prof. Trajče Stafilov's PhD and Master's students. To create the Geochemical Atlas, the territory of North Macedonia was covered with 995 sampling locations, but 16 separate areas with soil contamination were additionally sampled. The total sum of all collected soil samples was 3983 from 2449 different sampling sites in the period from 2006 to 2017. The analyses were performed at the Institute of Chemistry, Faculty of Natural Sciences in Skopje, at the Ss. Cyril and Methodius University in Skopje, North Macedonia, at the Research Institute for Analytical Instrumentation (ICIA), Cluj-Napoca, Romania, at the Joint Institute for Nuclear Research in Dubna, Moscow Region, Russia, and at Acme Labs in Vancouver, Canada. The sum of all analysed soil samples in all four mentioned laboratories was 7991 from 2006 to 2017. Using advanced mathematical methods such as multivariate statistical methods (HCA, FA, PCA) and artificial neural networks—multilayer perceptron (ANN-MP), predictions were made about the concentrations of potentially toxic elements (PTEs) and their distribution in real space. In less than two decades (2007–2023) of fruitful collaboration, a large number of scientific works have been published: 188 scientific publications, 8 geochemical atlases and 23 chapters in monographs.

Keywords: chemical elements; distribution; pollution; soil; North Macedonia



Citation: Stafilov, T.; Šajn, R.; Alijagić, J. Investigations of Chemical Element Distributions in Soil, North Macedonia—A Review. *Minerals* **2024**, *14*, 325. <https://doi.org/10.3390/min14030325>

Academic Editor: Juan Antelo

Received: 27 November 2023

Revised: 16 March 2024

Accepted: 20 March 2024

Published: 21 March 2024



Copyright: © 2024 by the authors. Licensee MDPI, Basel, Switzerland. This article is an open access article distributed under the terms and conditions of the Creative Commons Attribution (CC BY) license (<https://creativecommons.org/licenses/by/4.0/>).

1. Introduction

The impact of humans on the biosphere is extensive and complex and, in most cases, has led to irreversible changes. All human-induced changes disturb the natural balance of ecosystems as they have evolved over a long period. Therefore, in most cases, these changes lead to a degradation of the natural environment for humans. Although the human impact on the biosphere dates back to the Neolithic period, the problems of ecosystem degradation through pollution have intensified in the last few decades of the 20th century. Most of the chemical elements necessary for life on Earth are mainly supplied from the soil above the lithosphere. The content of elements in plants often correlates with their presence in the surrounding soils. Most of the chemical elements that are essential for human life are also essential for plants. However, the concentrations of most elements that can be harmful to humans are not toxic to plants, as they have adapted to such concentrations [1,2]. The consumption of energy and mineral resources leads to the contamination of the biosphere with potentially toxic elements (PTEs). Anthropogenic environmental changes, especially those associated with contamination, lead to environmental degradation. The most potentially

hazardous PTEs for the biosphere are As, Cd, Cr, Cu, Hg, Mo, Ni, Pb, Se and Zn. However, elements, such as Ag, Au, Be, Mn, Sb, Sn, Tl, U and V, can be hazardous to the environment if they are released in excessive quantities [3–5].

Soil is crucial for the survival of humanity, which is closely linked to its productivity. Soil acts as a filtering, buffering, storage and transformation system and protects against the effects of heavy metal pollution in groundwater. Soil is the most important source of chemical elements for plants, both in the form of micronutrients and pollutants [2]. Due to geological and climatic influences, soils have very different properties. Soils have a unique structural feature that distinguishes them from pure earth materials and serves as the basis for their classification: a vertical sequence of layers formed by the combined action of percolating water and living organisms [1].

The problem of the destruction of ecosystems through pollution became increasingly acute towards the end of the 20th century. The rapid increase in PTE concentrations in the environment is usually accompanied by the development of utilisation technologies. Soils contain chemical elements of different origins: lithogenic elements, which originate directly from the lithosphere; geogenic elements, which are of lithogenic origin but whose concentration and distribution in the soil layers are altered by paedogenetic processes; or anthropogenic elements, which originate from direct or indirect anthropogenic activities. The behaviour of chemical elements in the soil and, thus, their bioavailability differ depending on their origin and soil conditions as well as their chemical and physical properties. Regardless of the chemical form of the anthropogenic elements in the soil, their availability to plants is significantly higher than that of elements of geogenic origin. In several regions of the world, soils are exposed to increasing mineral fertilisation, pesticide use, waste disposal and industrial pollution. All these human activities affect both chemical and physical soil properties and lead to changes in the behaviour of chemical elements in soils [1,6–9]. The behaviour of elements during weathering and paedogenetic processes, the basic soil-forming processes, is closely related to their geochemical properties. Most elements have a lithophilic character [10,11]. Paedogenetic processes occur simultaneously with weathering processes; usually, these different processes are closely related.

The content of chemical elements in soil materials from natural and contaminated sites shows great variability, both horizontally and vertically. The heterogeneity of soils, especially at the micro level, leads to considerable problems when taking representative soil samples. This affects the reproducibility and comparability of analytical data, which are very important for assessing the background content of chemical elements in soils. Although, today, there is no truly pristine state of PTEs in soils even in remote regions, some values of PTEs in “uncontaminated” soils are used as reference values for the assessment of soil contamination [2].

The terms contamination and soil pollution are used synonymously. Soil contaminated with PTEs is only considered polluted if a threshold concentration is exceeded, and biochemical and biological processes are adversely affected [12]. The main sources of inorganic substances are industrial activities, such as mining and smelting of metal-bearing ores, brick and pipe manufacturing, cement, ceramic and glass production, electricity generation, fossil fuel combustion, nuclear reactors, municipal waste incineration, agricultural practises, such as soil amendment by sewage sludge, manure, mineral fertilisers and pesticides, fumigation, traffic and urban pollution, cosmic particles and long-range transport of pollutants [2,3].

Soil has recently become the subject of numerous studies, some of which deal with large areas. For example, Salminen et al. [13] and De Vos et al. [14] produced the first Geochemical Atlas of Europe as part of the FOREGS (Forum of European Geological Surveys) Geochemical Baseline Programme, which contains data on 63 elements in about 800 topsoil and subsoil samples. In 2014, Chemistry of Europe’s Agricultural soils (in which North Macedonia participated) was published by Reimann and the GEMAS study group (Geochemical Mapping of Agricultural and Grazing Land Soil), which is based on

the geochemical analysis of agricultural and grazing soils [15,16]. There are also numerous studies on soil pollution at the national or regional level [17–55].

Regional soil contamination occurs mainly in industrial regions and in the centres of large settlements, where factories, traffic and municipal waste are located [1]. Due to the heterogeneity and constant change of urban areas, it is necessary to understand the natural distribution of PTEs and the methods by which they can be distinguished from man-made anomalies in nature. The natural background of the content of PTEs in soil is variable, which means that higher levels of some elements may be normal in one region but abnormal in another. However, in cases where industrial enterprises, particularly mining and smelting operations, are located close to cities, pollution may increase. Recently published works have shown that mining and smelting activities lead to enormous soil pollution [56–75] and that the most serious soil pollution is a consequence of Pb-Zn mining and smelting activities [64,67,76–82] as well as similar activities for copper, arsenic and antimony [42,51–55,65,70–75,79–88] or coal-fired power plants [89].

North Macedonia first participated in the UNECE ICP Vegetation Programme–Heavy Metals in European Mosses [90,91] in 2002 (survey 2000/2001) and again in 2005, 2010, 2013, 2015 and 2020, in which the atmospheric deposition of trace elements was investigated using samples of terrestrial mosses. The results of these studies in North Macedonia indicate a deterioration in air quality with regards to PTE pollution [92]. The main emission sources are metallurgical activities, power plants and mining. Therefore, additional studies were conducted in the areas with the highest PTE pollution of various environmental media.

Despite conducting these studies in certain regions of the country, soil quality data are limited in terms of representing PTEs at the national level. Therefore, a soil geochemical survey was conducted throughout the country. This article provides an overview of all previous studies on the distribution of a large number of potentially toxic elements in the soils of North Macedonia. In addition to investigating their distribution in soils throughout the country, additional studies were conducted in areas where a higher occurrence of some elements is expected due to anthropogenic and urban activities, as well as due to the geochemical uniqueness of certain geochemical landscapes and depending on the geochemistry of the underlying lithology.

2. Geographic Description of North Macedonia

North Macedonia is a landlocked country in the central part of the Balkan Peninsula between 40°50' and 42°20' north latitude and between 20°28' and 23°05' east longitude (Figure 1), with an area of about 25,700 km². According to the 2022 census, North Macedonia has a total population of 1,830,000 (2022 census). North Macedonia is divided into eight statistical regions: Skopje, Pelagonia, Polog, Vardar, eastern, southeastern, northeastern and southwestern.

North Macedonia is geographically bounded by a central valley formed by the Vardar River and framed by mountain ranges, and the terrain is mostly rugged.

About two-thirds of the country's territory is mountainous; they belong partly to the old Rodope Group in the eastern part and to the young Dinaric Group in the western part of the country. The eastern mountains are generally lower than 2000 m, while the Dinaric Group over 2500 m high, with Golem Korab, 2764 m, as the highest peak in North Macedonia.

Valleys and plains cut through the mountainous relief structures and cover about a third of the country. The most pronounced valleys are those along the Vardar River, including the Skopje Valley (1840 km²), while the largest plain in North Macedonia is the Pelagonian Plain in the southwest, which covers an area of about 4000 km² at an average altitude of 600 m. North Macedonia also has scenic mountains, belonging to two different mountain ranges: the Šar Mountains (Dinaric Mountains) and the Osogovo–Belasica mountain chain (Rhodope Mountains) [28].

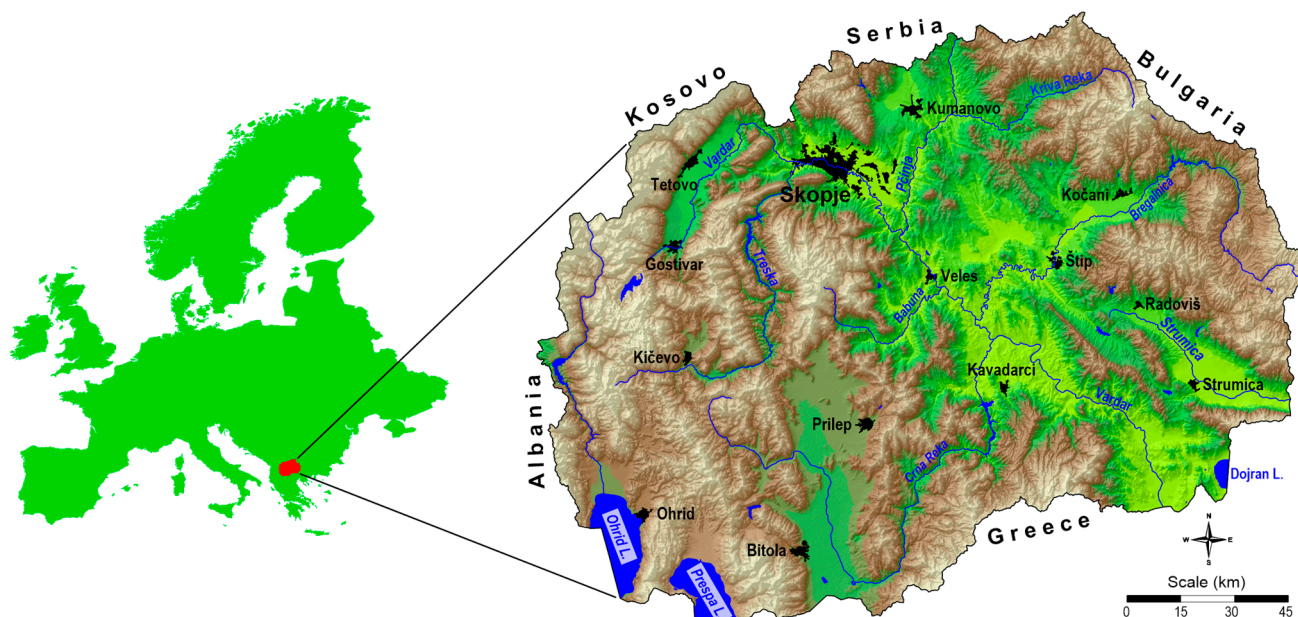


Figure 1. Topographic map of North Macedonia.

Due to the characteristic natural and geographical conditions, North Macedonia has two distinct climatic zones: a modified Mediterranean climate and a temperate continental climate. It also features two distinct seasons: cold, wet winters and dry, hot summers, associated with the transitional seasons of spring and autumn [93]. The complex relief structure and differences in altitude significantly alter the Mediterranean influence on the climate. The average annual temperature depends mainly on the altitude of the respective areas; the average annual variation can be up to 20 °C. In the mountain regions, the average annual temperatures are relatively low and range between 4.7 °C (1750 m) and 8.2 °C (1230 m). The highest average annual temperature of 14.5 °C is found in the lower reaches of the Vardar, which is influenced by the Aegean Sea.

The annual rainfall in North Macedonia is very unevenly distributed, with the lowest amounts, often less than 500 mm, falling in the central part of the country. Areas with higher rainfall are Skopje, Kumanovo and the Kočani-Radoviš valleys, with an average rainfall of 500–550 mm. The highest amounts of precipitation were found in the Debar Valley (870 mm) and in the mountainous regions of Bistra and Šar Mountains with over 1000 mm.

North Macedonia is rich in minerals, with deposits of various metals (Cr, Cu, Fe, Pb, Zn, Ni and Mn). Based on these mineral deposits, three mines for lead–zinc ore, one for copper ore and mines for iron, nickel and chrome ore have been opened in the past. In addition, smelters have been built for the extraction of various metals: iron and steel in Skopje, ferronickel in Kavadarci, ferrochromium and ferrosilicon in Jegunovce, and lead and zinc in Veles. The country also has gypsum, limestone, marble, lignite and granite mines.

Based on previous studies, it has been established that North Macedonia has a complex geology, comprising many geological formations of different ages and geological composition, which has led to a great variety of soil types. From a tectonic point of view, North Macedonia comprises six major tectonic units (Figure 2A), including the Vardar Zone (VZ) (Figure 2, IV) in the central region, the Pelagonian Massif (PM) (Figure 2, III), West-Macedonian Zone (WMZ) (Figure 2, II), a small part of the Cukali-Krasta Zone (CKZ) (Figure 2, I) in the west, the Serbo-Macedonian Massif (SMM) (Figure 2, V) and the Kraishtide Zone (KZ) (Figure 2, VI) in the east of the country [28,94–97].

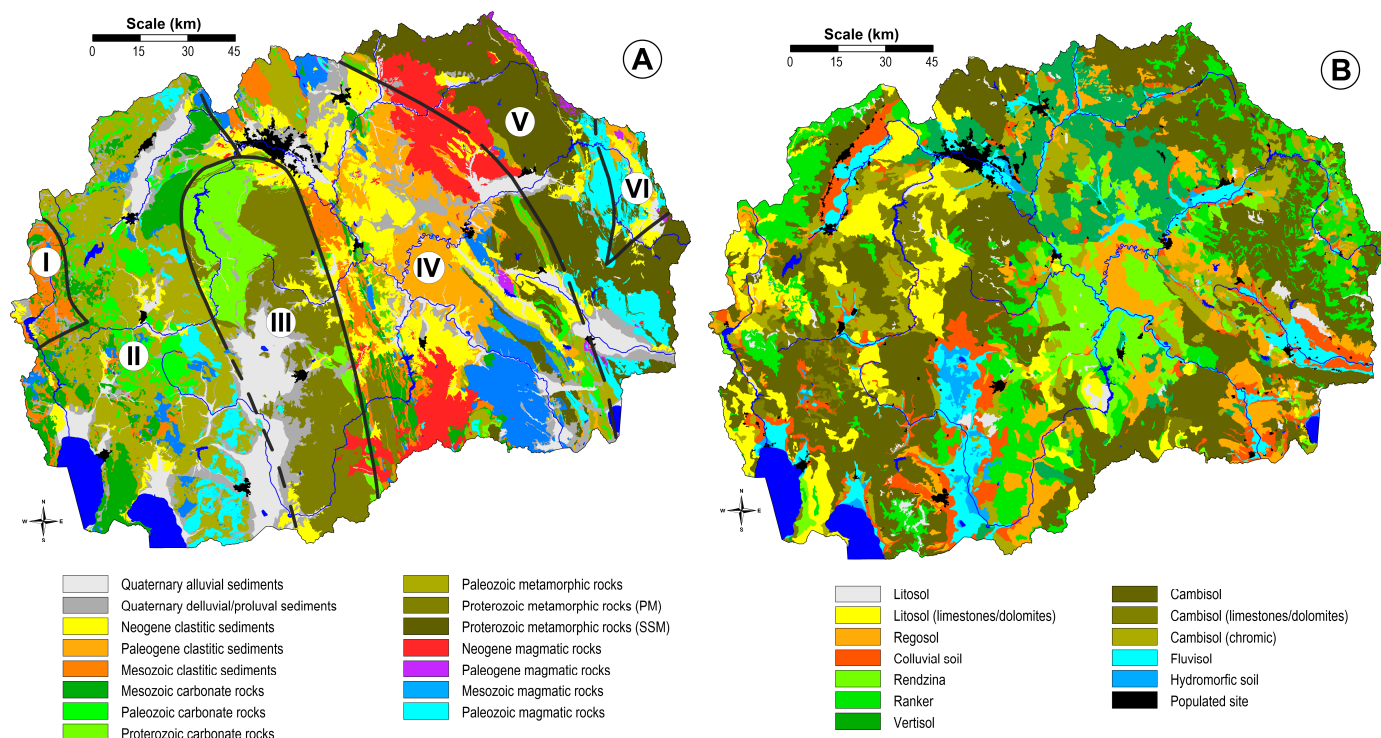


Figure 2. (A) Simplified geological map of North Macedonia. Tectonic units: I—Cukali-Krasta zone (CKZ), II—West-Macedonian zone (WMZ), III—Pelagonian massif (PM), IV—Vardar zone (VZ), V—Serbo-Macedonian massif (SMM), VI—Kraishtide zone (KZ) [28]; (B) generalized pedological map [28].

The Cukali-Krasta Zone (CKZ) is mainly distributed in Albania, with a small part in North Macedonia. This zone consists of Upper Cretaceous, conglomerates–sandstones, claystones and limestones with olistostromes and rudist limestones. Evaporites and minor Paleogene sediments can be found in this zone. The West-Macedonian Zone (WMZ) has an internal tectonic structure that was mainly formed during the Hercynian and Laramide compressions. The West-Macedonian Zone is lithologically composed of low-grade metamorphic rocks and anchi-metamorphic Paleozoic rocks and magmatites, Triassic and Jurassic sediments and magmatites, and Tertiary sediments. The Vardar Zone separates the Pelagonian Massif and the WMZ in the west from the Serbo-Macedonian massif in the east. It is an old structure that dates back to the Lower Palaeozoic. The Serbo-Macedonian Massif (SMM) is an accretionary wedge on the eastern edge of the Eurasian plate, which lies in the Carpatho-Balkanides and was pulled down over the Vardar Zone. The main mass consists of a complex of the lower or overthrust Proterozoic and the Upper Riphean-Cambrian. The Kraishtide Zone (KZ) represents the southernmost segment of the Carpatho-Balkanides, which are part of the Serbo-Macedonian Massif. The largest part of the zone is located in Bulgaria and is characterised by a particular type of Alpine development.

The territory of North Macedonia is covered by the following 15 main geological units: Quaternary alluvium, Quaternary deluvium/proluvium, Neogene clastites, Paleogene clastites, Mesozoic clastites, Mesozoic carbonates, Paleozoic carbonates, Proterozoic carbonates, Paleozoic metamorphic rocks, metamorphic rocks from the Pelagonian Massif, metamorphic rocks from the Serbo-Macedonian Massif, Neogene, Paleogene, Mesozoic and Paleozoic magmatic rocks.

North Macedonia has a very heterogeneous land cover, consisting of many soil types and lower taxonomic units. According to the pedological map of the country [98,99], the following soil types are predominant: lithosol, lithosol (limestone/dolomite), regosol, colluvial soil, rendzina, ranker, vertisol, cambisol, chromic cambisol, cambisol (limestone/dolomite), fluvisol, hydromorphic soil and anthrosol (Figure 2B).

3. Materials and Methods

3.1. Soil Sampling and Preparation

The soil samples were taken in accordance with European guidelines but also in accordance with our many years of experience [13–15,28,100]. For the Geochemical Atlas of North Macedonia, the entire country was divided into 20 geographically clustered parts (Figure 3A, Table 1). For this purpose, a sampling grid of 5×5 km was chosen, in which a total of 1990 soil samples were taken at 995 locations in two layers, topsoil (0–5 cm) and subsoil (20–30 cm). The sampling campaigns for this purpose were carried out between 2012 and 2015.

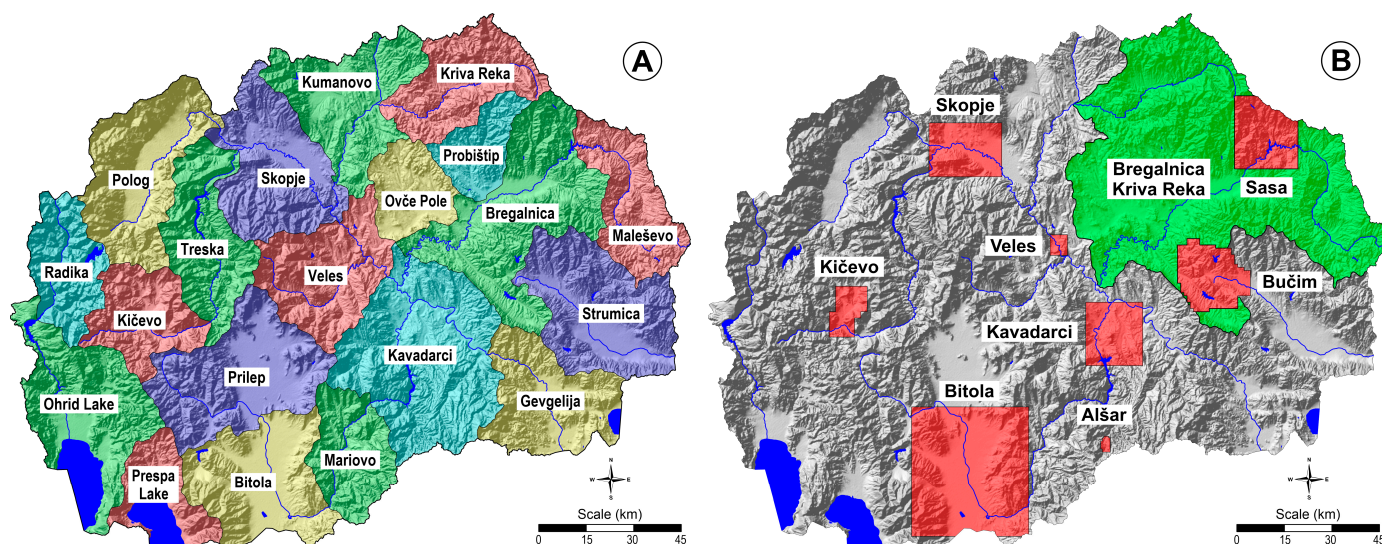


Figure 3. (A) Areas investigated within the geochemical map of North Macedonia; (B) other investigated areas.

Table 1. Areas investigated within the geochemical atlas of North Macedonia (GA) and other investigated areas.

Area	Samples	Material	Analytics Laboratory (Year)	References
N. Macedonia (Geochemical Atlas)	995	T/S *	ACME (2016)	[28,101]
Bregalnica (GA)	166	T/S	IC (2012), ICIA (2012)	[67,102]
Gevgelija (GA)	86	T/S	IC (2014), ICIA (2015)	[103]
Kavadarci (GA)	204	T/S	IC (2015), ICIA (2015)	–
Kičevo (GA)	70	T/S	IC (2015), ICIA (2015)	–
Kriva Reka (GA)	96	T/S	IC (2012), ICIA (2015)	[67,104]
Kumanovo (GA)	102	T/S	IC (2014), ICIA (2014)	[105]
Maleševo (GA)	82	T/S	IC (2012), ICIA (2012)	[67,102]
Mariovo (GA)	72	T/S	IC (2014), ICIA (2014)	[106]
Ohrid Lake (GA)	128	T/S	IC (2014), ICIA (2014)	[107]
Ovče Pole (GA)	50	T/S	IC (2012), ICIA (2015)	[67,102]
Bitola (GA)	100	T/S	IC (2012), ICIA (2015)	[108]
Prilep (GA)	146	T/S	IC (2014), ICIA (2015)	[108]

Table 1. Cont.

Area	Samples	Material	Analytics Laboratory (Year)	References
Polog (GA)	116	T/S	IC (2012), ICIA (2015)	[109]
Prespa Lake (GA)	50	T/S	IC (2014), ICIA (2015)	[110]
Probištip (GA)	42	T/S	IC (2012), ICIA (2012)	[67,102]
Radika (GA)	62	T/S	IC (2015), ICIA (2015)	[111]
Skopje (GA)	120	T/S	IC (2014), ICIA (2014)	[68]
Strumica (GA)	132	T/S	IC (2014), ICIA (2015)	[112]
Treska (GA)	88	T/S	IC (2015), ICIA (2015)	[113]
Veles (GA)	106	T/S	IC (2014), ICIA (2015)	[78]
Allchar	136	T/S	IC (2012), ICIA (2012)	–
Bitola	116	T/S, TS	IC (2012/2016)	[108]
Bregalnica	185	T/S, TS	IC (2012), ICIA (2012)	[67,102]
Bučim	40	T/S	IC (2009)	[67]
Crna Reka	74	T/S	IC (2012/2017), ICIA (2014)	[65]
Drim	32	T/S	IC (2016)	[66]
Kavadarci	344	T/S	ACME (2007)	[85,114]
Kičevo	52	T	IC (2009)	[115]
Kriva Reka	62	T/S	IC (2009), ICIA (2015)	[104]
N. Macedonia (Soil/Moss)	144	T/S	IC (2011)	[116]
Pčinja	20	T/S	IC (2017)	[88]
Skopje	234	T	IC (2009/2014), ICIA (2014)	[117,118]
Strumica	24	T/S	IC (2015)	–
N. Macedonia (Tobacco fields)	149	TS	IC (2013)	[119]
Vardar	56	T/S	IC (2012), ICIA (2012)	[63]
Veles	325	T	IC (2006/2012/2015), JINR (2006/2012)	[57,120]

GA—Geochemical Atlas, T—topsoil (0–5 cm), S—subsoil (20–30 cm), TS—soil (0–30 cm), T/S *—composite soil (0–5/20–30 cm), ACME—Bureau Veritas Commodities Canada Ltd. (former ACME), IC—Institute of Chemistry, Faculty of Natural Sciences in Skopje at the Ss. Cyril and Methodius University in Skopje, North Macedonia, ICIA—Research Institute for Analytical Instrumentation, Cluj-Napoca, Romania, JINR—Joint Institute for Nuclear Research in Dubna, Moscow Region, Russia.

In addition to sampling the soil as part of the Geochemical Atlas, 16 independent (separate) areas of soil contamination were also sampled (Figure 3B, Table 1). This means that in some specific regions, somewhat denser sampling was carried out. The soil sampling methods used are very comparable, often identical or do not take into account the different soil layers. In Bitola, Bregalnica and Tobacco Fields, composite samples from 0 to 30 cm were taken, while in Kičevo, Skopje and Veles, only the topsoil (0 to 5 cm) was sampled.

The sampling density in the individual areas varied, such as in the areas of Bučim (5 × 5 km), Kičevo (1 × 1 km), Kavadarci, Skopje and Veles (1 × 1 km and 0.5 × 0.5 km), and Allchar (0.5 × 0.5 km). An irregular sampling grid was used when sampling in the areas of Bitola, Bregalnica, Kriva Reka or Tobacco fields, as well as when sampling in the river valleys of Bregalnica, Drim, Crna Reka, Kriva Reka, Pčinja, Strumica and Vardar.

Their total number is 1993 from 1454 different locations. However, the sum of all soil samples ever collected is 3983 from 2449 different locations in North Macedonia in the period from 2006 to 2017.

The soil samples were first freed from plants and stones, homogenized and then dried at room temperature. The dry samples were passed through a 2 mm sieve and pulverized to a fine-grain size (125 µm) in an agate mill.

3.2. Chemical Analyses

Prior to the determination of the elements via atomic absorption spectrometry (AAS), inductively coupled plasma–atomic emission spectrometry (ICP-AES) and inductively coupled plasma–mass spectrometry (ICP-MS), the samples were chemically prepared with an acid mixture according to the international standards (ISO 14869–1:2001) [121].

In some studies, AAS was used for the analysis of As, Cd, Cr, Cu, Fe, Hg, Mn, Pb, Sb and Zn by flame AAS (Varian SpectrAA 55B) or by Zeeman electrothermal AAS (Varian SpectrAA 640Z), while mercury was analysed by cold vapour AAS (Varian VGA–76). All these analyses were performed at the Institute of Chemistry of the Faculty of Natural Sciences in Skopje at the Ss. Cyril and Methodius University in Skopje, North Macedonia. This method was applied to 201 samples in 2006 (Table 1) [120]. For quality control, the certified reference standard materials JSAC 0401 (soil) and SARM 3 (rock) were used, yielding values very close to the certified values.

When using ICP-AES (Varian, model 715), the instrumental conditions were previously optimised for each of the 23 elements analysed (Ag, Al, As, B, Ba, Ca, Cd, Co, Cr, Cu, Ga, Fe, K, Li, Mg, Mn, Mo, Na, Ni, Pb, Sr, V and Zn). The quality control of the analyses was checked considering the recovery rate, which was between 98.2% and 100.8%. Quality control was also performed by analysing certified reference samples: soil sample JSAC 0401 (The Japan Society for Analytical Chemistry), rock CRM samples unsaturated igneous rock SARM 3 NIM–L Lujaurite (SA Bureau of Standards, Pretoria, S. Africa) and rock NCS DC71306 (GBW07114) (China National Analysis Centre) [122]. From 2009 to 2017, a total of 3464 samples were analysed using this method (Table 1).

Most of the elements (Ag, As, Au, B, Ba, Be, Bi, Br, Cd, Ce, Co, Cr, Cs, Cu, Dy, Er, Eu, Fe, Ga, Gd, Ge, Hf, Hg, Ho, I, In, Ir, K, La, Li, Lu, Mg, Mn, Mo, Na, Nb, Nd, Ni, Os, Pb, Pd, Pr, Pt, Rb, Re, Rh, Ru, Sb, Sc, Se, Sm, Sn, Sr, Ta, Tb, Te, Th, Ti, Tl, Tm, V, W, Y, Yb, Zn and Zr) were analysed using ICP-MS. These measurements were performed with the SCIEX Perkin Elmer Elan DRC II (Canada) ICP-MS (quadrupole as single detector) at INCDO-INOE2000 at the Research Institute for Analytical Instrumentation (ICIA), Cluj-Napoca, Romania. All measurements were performed using the semi-quantitative method (TotalQuant) in Elan 3.4 software. A multi-element standard solution Merck VI was used, which was diluted to simulate real sample consumption [63]. In the period from 2012 to 2015, this method was applied to 2672 soil samples (Table 1).

For some case studies [57], non-destructive epithermal neutron activation analysis (ENAA) was used for analysis in the IBR-2 reactor, FLNP Joint Institute for Nuclear Research in Dubna, Moscow Region, Russia [123]. Thirty-nine elements (Al, Ca, Fe, K, Mg, Na, Ti, As, Au, Ba, Br, Ce, Co, Cr, Cs, Cu, Dy, Hf, In, La, Mn, Mo, Nd, Ni, Rb, Sb, Sc, Se, Sm, Sr, Ta, Tb, Th, Tm, U, V, W, Yb and Zn) were analysed using this method. The quality control of the ENAA results was ensured by the simultaneous analysis of the analysed samples and the reference materials, SDM (soil) and SI-1 (bottom sediments) of the IAEA (International Atomic Energy Agency). The total number of samples analysed using this method amounts to 267 in the period from 2006 to 2012.

The element concentrations were also analysed in 2007 at Acme Labs, Vancouver, Canada (accredited according to ISO 9001:2008) [124]. The concentration of 37 chemical elements (Ag, Al, As, Au, B, Ba, Bi, Ca, Cd, Co, Cr, Cu, Fe, Ga, Hg, K, La, Mg, Mn, Mo, Na, Ni, P, Pb, S, Sb, Sc, Se, Sr, Te, Th, Ti, Tl, U, V, W and Zn) was analysed after digestion with aqua regia (1:1:1 HCl:HNO₃:H₂O) for 3 h at 95 °C using ICP-MS. In 2016, the concentrations of 45 elements (Ag, Al, As, Ba, Be, Bi, Ca, Cd, Ce, Co, Cr, Cu, Fe, Hf, In, K, La, Li, Mg, Mn,

Mo, Na, Nb, Ni, P, Pb, Rb, Re, S, Sb, Sc, Se, Sn, Sr, Ta, Te, Th, Ti, Tl, U, V, W, Y, Zn and Zr) were analysed by inductively coupled plasma emission spectroscopy (ICP-ES) after four acid digestions (HClO₄, HNO₃, HCl and HF) [124]. The total number of soil samples analysed in the ACME laboratory was 1387.

The sum of all soil samples analysed in all four laboratories mentioned is 7991 in the period from 2006 to 2017.

3.3. Data Processing

All data processing and calculations, geostatistical data interpretation and visualisation (mapping) were performed with the following software: Statistica [125], QGIS [126] and Surfer [127].

The data were evaluated using a series of data analysis and statistical methods. Individual elements were assessed using univariate, bivariate and multivariate data analysis techniques and spatial mapping of the content of individual elements. The Box–Cox transformation method [128] was frequently used to normalise the data. Multivariate cluster analysis (HCA) and factor analysis (FA) [129–131] were used to reveal the relationships between the chemical elements.

Cluster analysis was applied to partition multivariate observations into several meaningful multivariate homogeneous groups or centres called centroids [132,133]. Due to the complex nature of regional geochemical data [134,135], appropriate data transformations must be performed before performing a cluster analysis. The results of the analysis also depend on the chosen clustering algorithm [132,136,137].

The method of factor analysis was introduced by Sperman [138]. It represents a complicated system of procedures that can be used to identify the relationships between a large number of observed variables [28]. Factor analysis is known as a dimension reduction method, which means that the data are presented in a more concentrated form [139]. The main objective of factor analysis is to explain the variation in a multivariate data set by some representative factors that represent certain characteristics inherent in the data [129,140].

The method of factor analysis is also useful in the presentation of geochemical maps in geochemical studies. One advantage is that instead of maps for 40–50 (or more) elements, only maps for a few representative factors need to be presented.

4. Studies on the Distribution of Chemical Elements in Soil from North Macedonia

Table 2 contains the European median values as well as the median values for North Macedonia (sampling grid 5 × 5 km) and selected case studies, where the sampling grid was denser. The basic information on the total number of samples collected and the analytical treatment with the corresponding references is included in Table 1.

Table 2. Estimated European and North Macedonian medians of selected chemical elements.

	Unit	EU _(MA) [*]	EU _(AR) [*]	North Macedonia	Allchar	Bitola	Bučim	Kavadarci	Kičevo	Skopje	Veles
Al	%	5.8	1.1	6.6	3.8	2.2	1.8	1.5	1.4	3.8	6.2
As	mg/kg	7.0	5.6	10	73	18	12	8.8	7.8	12	9.2
Ba	mg/kg	380	63	430	380	320	250	110	380	300	460
Be	mg/kg	<2.0	0.51	2.0	2.2	-	-	-	-	5.1	-
Bi	mg/kg	<0.50	0.18	0.30	0.14	-	-	0.20	-	-	-
Ca	%	0.66	0.31	1.3	1.5	0.52	0.41	3.6	0.24	4.8	4.1
Cd	mg/kg	0.15	0.20	0.30	0.27	0.26	-	0.30	0.42	0.54	6.4
Ce	mg/kg	48	27	56	22	-	-	-	-	52	65
Co	mg/kg	7.8	7.2	17	11	8.7	-	15	11	38	13

Table 2. Cont.

	Unit	EU _(MA) [*]	EU _(AR) [*]	North Macedonia	Allchar	Bitola	Bučim	Kavadarci	Kičevo	Skopje	Veles
Cr	mg/kg	60	20	88	61	57	55	50	43	100	160
Cs	mg/kg	3.7	1.1	-	4.1	-	-	-	-	4.0	3.7
Cu	mg/kg	13	15	28	19	20	23	30	14	33	41
Fe	%	3.2	1.7	3.5	1.9	2.0	2.6	2.3	2.8	3.1	2.8
Ga	mg/kg	14	3.4	-	9.3	-	13	4.0	-	26	-
Ge	mg/kg	0.037	-	-	0.17	-	-	-	-	0.84	-
Hf	mg/kg	5.6	<0.020	1.0	0.78	-	-	-	-	0.88	4.4
Hg	mg/kg	-	0.035	-	0.11	-	-	0.020	-	0.13	0.28
In	mg/kg	0.050	<0.020	-	0.020	-	-	-	-	0.025	0.24
K	%	1.6	0.11	1.9	1.9	1.8	0.88	0.26	1.4	1.2	2.2
La	mg/kg	24	14	25	13	-	-	15	-	26	29
Li	mg/kg	-	11	26	18	14	12	-	11	28	-
Mg	%	0.46	0.28	0.94	1.0	0.41	0.71	0.92	0.59	1.2	0.36
Mn	mg/kg	500	440	900	480	550	440	780	690	720	830
Mo	mg/kg	0.62	0.42	0.90	0.35	-	-	0.30	-	1.5	0.54
Na	%	0.59	0.005	1.2	0.49	1.1	1.3	0.008	0.50	0.53	1.0
Nb	mg/kg	9.7	0.52	11	6.3	-	-	-	-	22	-
Ni	mg/kg	18	14	46	39	25	27	72	18	86	54
P	%	0.056	0.065	0.062	0.072	0.048	-	0.049	-	-	-
Pb	mg/kg	23	18	32	87	10	23	21	71	51	210
Rb	mg/kg	80	14	86	47	-	-	-	-	110	93
Sb	mg/kg	0.60	0.28	0.80	3.4	-	-	0.20	-	1.2	1.9
Sc	mg/kg	8.2	2.0	12	6.6	-	-	3.7	-	24	9.6
Sn	mg/kg	3.0	0.81	2.6	1.2	-	-	-	-	4.8	-
Sr	mg/kg	89	18	140	93	68	39	62	15	91	230
Ta	mg/kg	0.68	<0.005	0.70	0.43	-	-	-	-	0.70	1.3
Th	mg/kg	7.2	2.5	9.5	0.83	-	-	4.7	-	-	10
Ti	%	0.34	0.007	0.34	-	-	-	0.015	-	0.88	0.36
Tl	mg/kg	0.66	0.12	0.70	5.2	-	-	0.20	-	0.19	-
U	mg/kg	2.0	0.74	2.0	-	-	-	0.50	-	-	2.4
V	mg/kg	60	26	89	69	67	59	37	-	-	78
W	mg/kg	<5.0	0.09	1.3	2.7	-	-	0.10	-	1.3	9.7
Y	mg/kg	21	6.5	18	5.8	-	-	-	-	24	-
Zn	mg/kg	52	46	83	55	59	71	57	97	100	210
Zr	mg/kg	230	1.6	35	32	-	-	-	-	75	-

* EU—European medians [13–16]; (MA)—four-acid digestion; (AR)—aqua regia digestion; data rounded to two digits.

There is a significant difference between the geochemical map of North Macedonia and individual local areas. The sampling grid of the geochemical map (5 × 5 km) is quite sparse, so that the geochemical groups mainly represent natural distributions. On the other hand, in individual local areas, we targeted sampling in areas where we expected strong impacts from mining and smelting (Allchar, Bregalnica, Bučim, Kavadarci, Kriva Reka,

Veles), operation of thermal power plants (Bitola, Kičevo), anthropogenic impacts (Skopje) and impacts from agriculture (Tobacco Fields). Much denser grids were used, e.g., regular or irregular sampling grids adapted to each case study. The local research, therefore, mainly reflects anthropogenic influences.

4.1. Geochemical Atlas of North Macedonia [28]

The Geochemical Atlas of North Macedonia is the result of the voluntary and enthusiastic work of Prof. Trajče Stafilov's group and his PhD and Master's students, as well as individual experts from North Macedonia and Slovenia, Romania and Russia. The Atlas provides a comprehensive picture of the fundamental chemistry that supports life on land, which has evolved from the complex interactions of air, water, soil and human activities. It could fulfil the future requirements of the European Soil Framework Directive while ensuring high quality and scientifically sound information on the state of the soil at a national level. The monograph "Geochemical Atlas of the Republic of Macedonia" was awarded the state prize "Goce Delčev" for the best scientific achievements in 2016.

The study focussed on assessing the levels of 39 of the 45 chemicals (Ag, Al, As, Ba, Be, Bi, Ca, Cd, Ce, Co, Cr, Cu, Fe, Hf, In, K, La, Li, Mg, Mn, Mo, Na, Nb, Ni, P, Pb, Rb, Re, S, Sb, Sc, Se, Sn, Sr, Ta, Te, Th, Ti, Tl, U, V, W, Y, Zn and Zr) in mixed composite samples in which both soil horizons (topsoil and subsoil) were included. This study includes samples collected in 2012–2015 at 995 sites in a sampling grid of 5×5 km. After the application of multivariate statistical methods, the following geochemical associations were isolated: Ba-Be-Ce-K-La-Rb-Th-Tl-U (Figure 4A), Co-Cu-Fe-Mn-Sc-Ti-V (Figure 4B), Hf-Zr, Nb-Ta, Cr-Ni (Figure 5A), Ca-Mg, Bi-Pb-Sn (Figure 5B), Cd-P-Zn (Figure 6A) and Sb-As (Figure 6B).

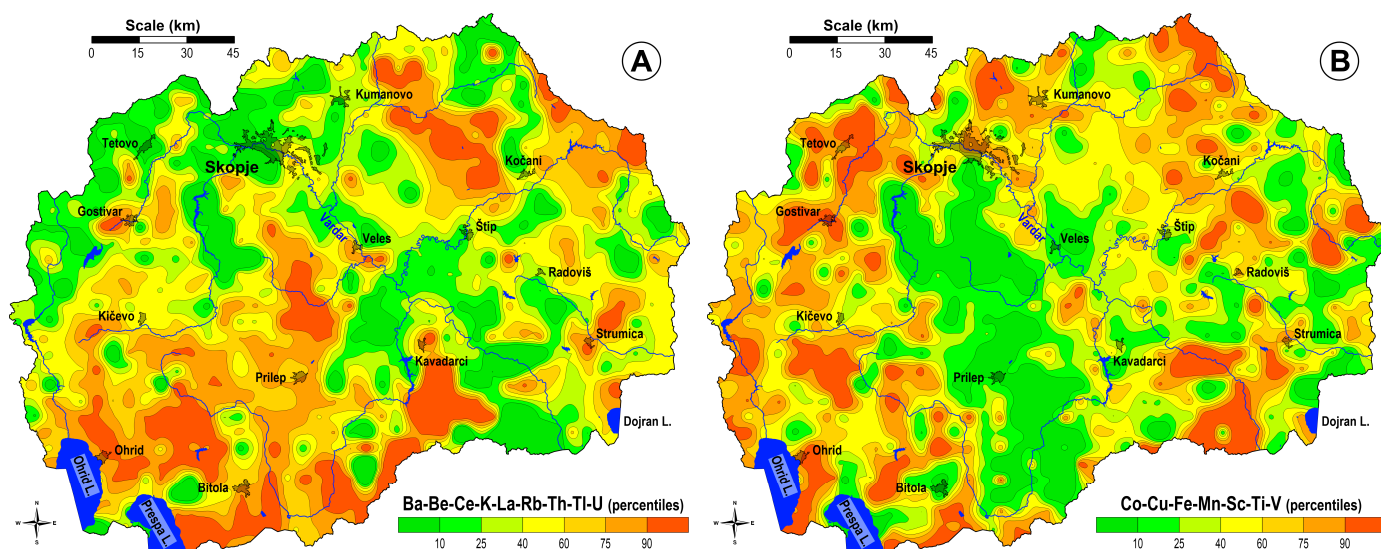


Figure 4. Spatial distribution of the geochemical associations, North Macedonia: (A) Ba-Be-Ce-K-La-Rb-Th, Ti-U; (B) Co-Cu-Fe-Mn-Sc-Ti-V [28].

Based on the results of the factor analyses, the chemical levels can be associated with the lithological units. Shown in Figure 4A, this is mainly associated with Neogene and Quaternary volcanism, but some subclusters within the association could be distinguished: Ce-La, Th-U, Hf-Zr and Sr. In general, Ce and La reflect the characteristics of all REEs. Their highest values are associated with lithological units in the south of the country that belong to the young volcanism of the Neogene–Quaternary. The Th-U subcluster could be representative of the radioactive elements in the soil, whose highest values, in addition to the previous subcluster, occur in the metamorphic rocks of the Pelagonian Massif associated with the Kratovo-Zletovo Massif.

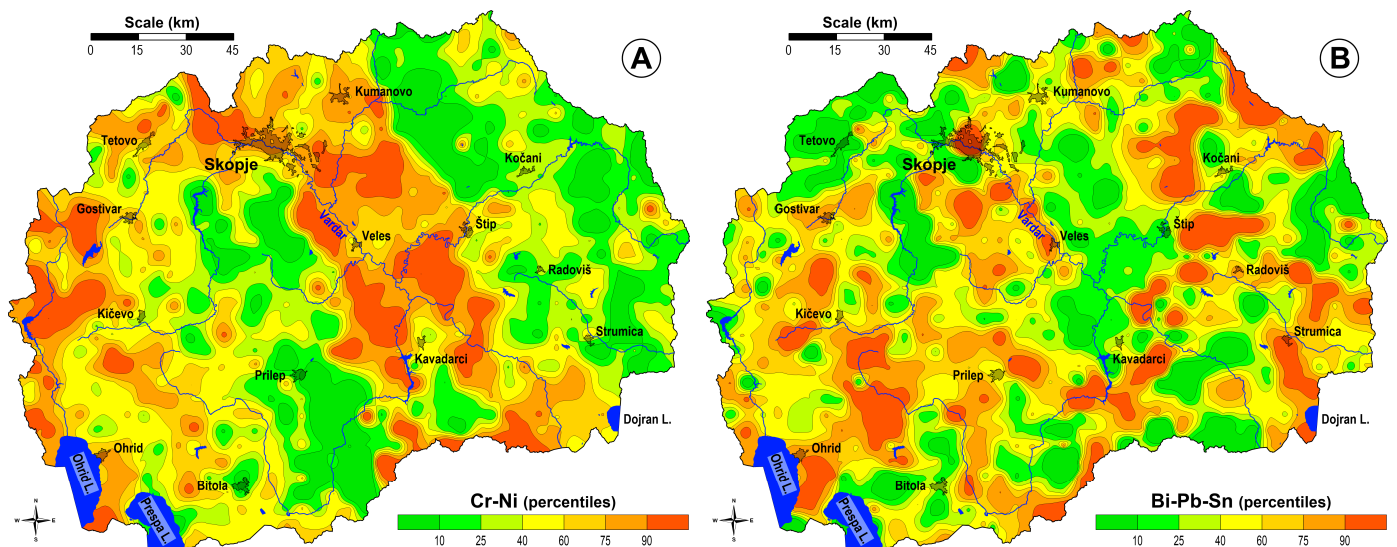


Figure 5. Spatial distribution of the geochemical associations North Macedonia: (A) Cr-Ni; (B) Bi-Pb-Sn [28].

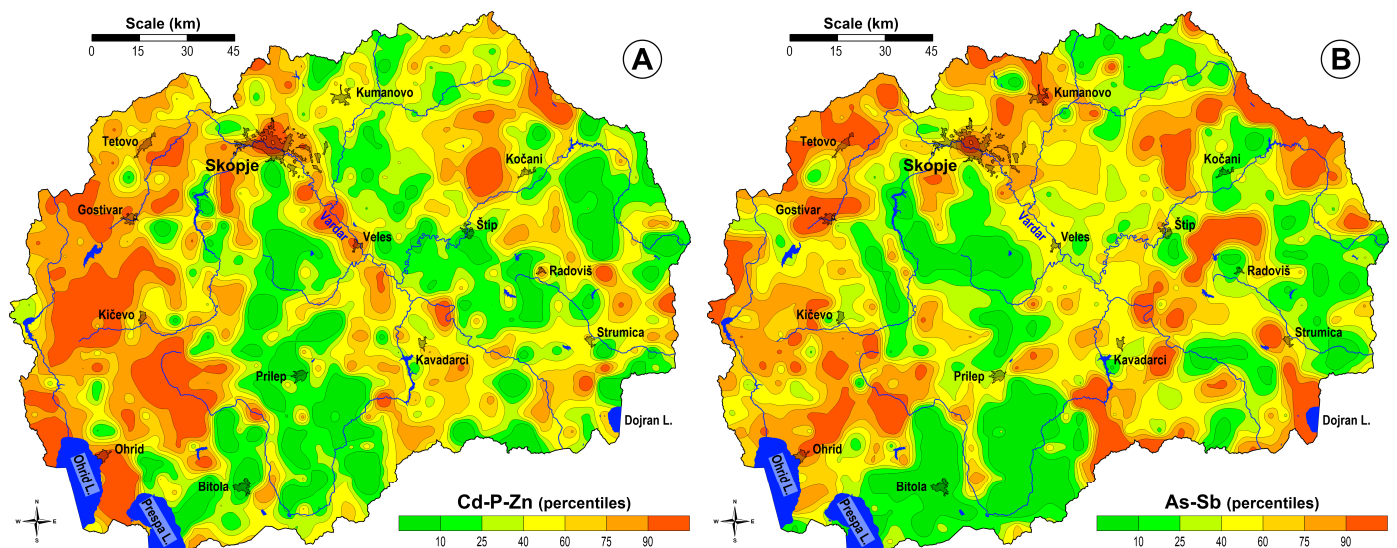


Figure 6. Spatial distribution of the geochemical associations North Macedonia: (A) Cd-Pb-Zn; (B) As-Sb [28].

The next association, the so-called siderophile group, comprises the elements shown in Figure 4B. The highest values are found in soils formed on Mesozoic and Palaeozoic igneous rocks of the Pelagonian Massif, followed by areas where metamorphic rocks of the SMM and in the Palaeozoic metamorphic rocks of the WMZ occur. Insignificant concentrations are found in the Precambrian metamorphic and carbonate rocks of the PM. Chromium and nickel are associated with ophiolites and Mesozoic ultrabasic magmatic rocks of the Vardar Zone (Figure 5A). Their increased levels are found in soil formed over Neogene, Paleogene and Mesozoic clastites, but their main source is due to the weathering of Mesozoic ophiolites and ultrabasic magmatic rocks. Significant levels have been found in sediments along the Vardar River in the Vardar Zone.

Three subclusters of sulphide elements are isolated in Figures 5B and 6A,B. The spatial distribution maps show that all three groups have both natural and anthropogenic influences. Notable levels of Bi-Pb-Sn are found in the southeast of North Macedonia, where Palaeogene and Neogene volcanism of the Pelagonian Massif predominates, but also in Quaternary deposits, especially in the Vardar River valley. The anthropogenic effects of

the Pb-Zn smelter in Veles and the urban area of the capital Skopje are primary sources of their increased levels in soil, but their natural increase is mainly due to volcanic activity. The distribution of As and Sb is similar to the previous group. High contents of Bi, Pb and Sn are found mainly in the mining areas in the east of the country (Sasa, Toranica and Zletovo mines) and in the town of Veles (Pb-Zn smelter).

4.2. Investigations of Selected Certain Areas

4.2.1. Soil Pollution in the Town of Veles and Its Environ [57,120]

The city of Veles is located in the valley of the Vardar River (in the central part of North Macedonia) (Figure 1). Veles is a special urban and industrial area in many respects. Situated in the middle region of North Macedonia, in the valley of the Vardar River, lies the city of Veles (Figure 1). In many ways, Veles is a unique urban and industrial district. Situated in the basin of the Vardar River, the city is surrounded by hills and mountains.

In 2002, 44,000 inhabitants were registered in the city. Veles is one of the most polluted cities in North Macedonia, due to pollution from the Pb-Zn smelter located in the city (which was closed in 2002). The capacity of the smelter was about 100,000 tons of zinc and lead and 120,000 tons of sulphuric acid per year [78] and was the source of emissions of dust containing lead and other PTEs [141].

To determine the possible contamination of the soil in the city and its immediate surroundings with Cd, Pb and Zn (as well as other PTEs), a total of 201 soil samples were taken from an area of 26 km². For this purpose, 44 chemical elements were analysed, of which Cu, Cd, Zn, Hg and Pb were determined via atomic absorption spectrometry (AAS) and 39 elements (Al, As, Au, Ba, Br, Ca, Ce, Co, Cr, Cs, Dy, Eu, Fe, Hf, In, K, La, Mg, Mn, Mo, Na, Nd, Ni, Rb, Sb, Sc, Sm, Sr, Ta, Tb, Th, Ti, Tm, U, V, W, Yb, Zn and Zr) through neutron activation analysis (ENAA).

The findings show that the soils in the urban zone and industrial zone have much higher levels of the most common group of PTEs, with an elemental enrichment ranging from 2.2-times for Sb to 27-times for Cd compared to Europe averages [14]. The very high Cd content of in the polluted area reaches 600 mg/kg (Figure 7A), 1.5% for Pb (Figure 7B) and 2.7% for Zn. The contamination with As, Cu and Hg was also classified as insignificant. According to Dutch standards, an area of 6.8 km² was determined to be critically contaminated with all six PTEs mentioned (As, Cd, Cu, Hg, Pb and Zn). Due to rising winds, the critically contaminated area is shaped like an ellipse [93].

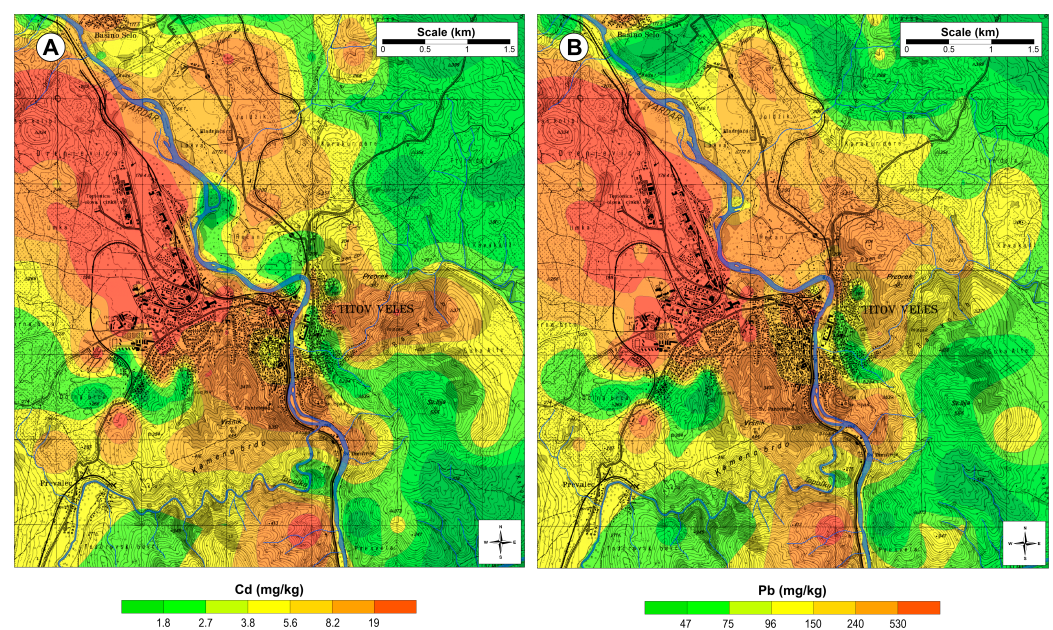


Figure 7. Spatial distribution in Veles area: (A) cadmium; (B) lead [120].

As a result of the high soil contamination in the region of the city of Veles, vegetables produced in the gardens of this region were found to be significantly contaminated with Cd and Pb, with concentrations exceeding the maximum permissible concentration in a large number of different vegetables [142]. Furthermore, it was also established that dust from the slag deposits and contaminated soils is being blown into the city. The levels of Ag, As, Cd, Cu, In, Pb, Sb, Se and Zn in house dust samples reflect an anthropogenic association of the elements [143].

4.2.2. The Area of the Town of Kavadarci [85,144]

The town of Kavadarci is located in the Tikveš Valley, about 100 km south of the capital, Skopje (Figure 1). The Kavadarci region is known for its ferronickel industry, which is considered a potential source of heavy metal pollution. The soil survey was conducted to determine the content of 36 major and trace elements in the soils in the town of Kavadarci and its surroundings in order to assess the potential impact of the ferronickel smelter located near the town. In the past, this smelter used nickel ore, with a Ni content of about 1% from its own mine, which is located about 30 km south of the plant [85]. In recent decades, nickel-bearing ores have been imported from Asia, Central America and Africa (2%–2.5%).

The studied area (360 km²) is covered by a sampling grid of 2 × 2 km, while in the urban zone and the ferronickel smelter (117 km²), the sampling grid is 1 × 1 km. A total of 344 soil samples were collected at 172 locations from two layers (0–5 cm and 20–30 cm). The determination of 36 elements was carried out by ICP-MS [85].

Four geochemical relationships were identified based on the findings of the multivariate statistical analyses and the created distribution maps. The spatial distributions of both associations between Al, Fe, Ga, Sc and V (Figure 8A) and Co, Cr, Mg and Ni show natural occurrence, depending on lithogenesis, since their increased levels are found in both soil horizons. The highest contents were found in the areas of the Paleozoic and Mesozoic rocks and the upper flysch zone of the Eocene, with the lowest values in the area of the Pleistocene tuff, the Holocene diluvium and the Holocene alluvium.

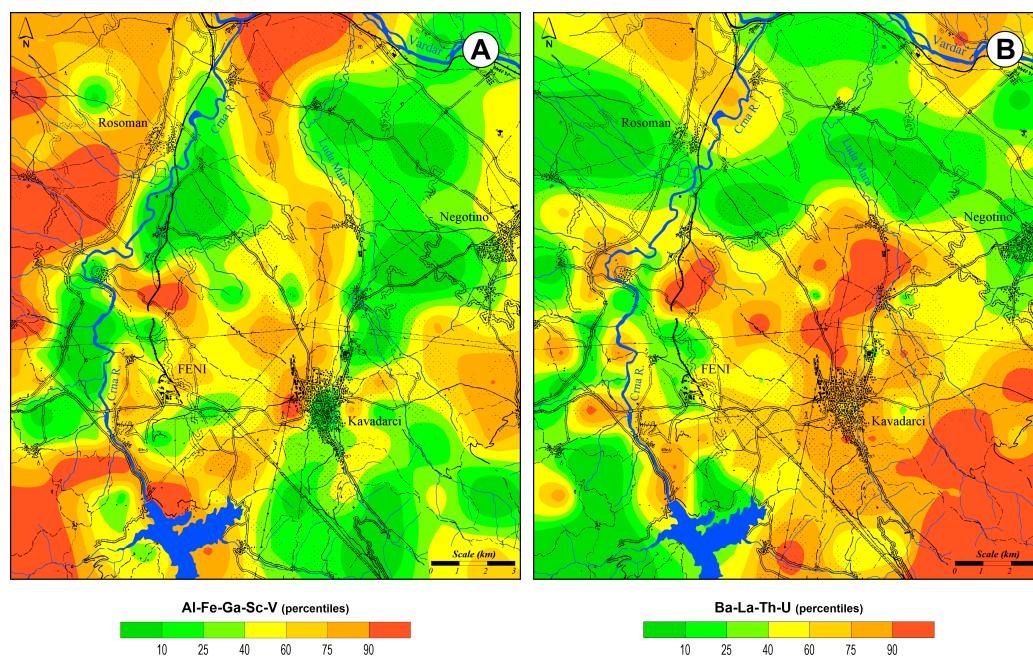


Figure 8. Spatial distribution of geochemical associations in Kavadarci area: (A) of Al-Fe-Ga-Sc-V; (B) Ba-La-Th-U.

The third association (Figure 8B) is mainly affected by human activities. In some areas, the Pleistocene tuff, Holocene diluvium and Holocene alluvium are predominant, and their

concentrations in both soil horizons are increased. The association of Ca and Sr occurs in the upper flysch zone of the Eocene and in the sandy area of the Pliocene.

The map of the spatial distribution of Cd, Hg, Pb and Zn (Figure 9A) shows their enrichment in upper soil horizons, which indicates their anthropogenic origin. The increase in the elements is determined in the Palaeozoic and Mesozoic.

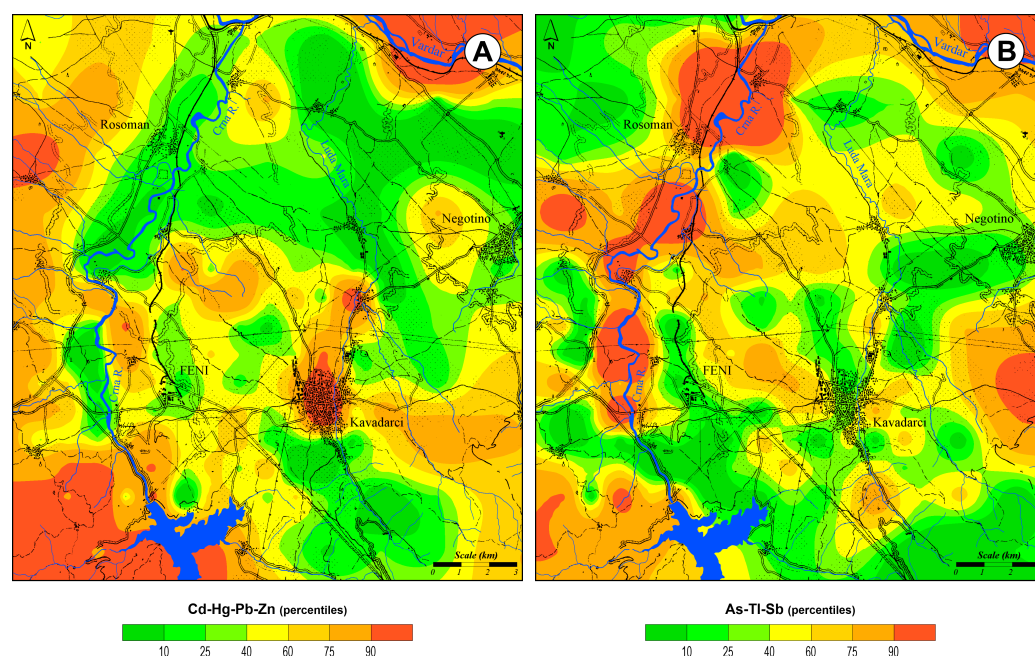


Figure 9. Spatial distribution of geochemical associations in Kavadarci area: (A) Cd-Hg-Pb-Zn; (B) As-Tl-Sb.

The spatial distribution patterns of the individual elements do not differ significantly. There is a clear anomaly in the topsoil around the Palaeozoic and Mesozoic rocks, in the wider urban area of Kavadarci and in the Holocene alluvium of the Vardar River.

The specific characteristics show the following distinctive group of elements, As, Sb, and Tl, in Figure 9B. The high levels of these elements were identified in samples from the Holocene alluvium of the Crna Reka River, with enrichment exceeding the average of the entire study area by 4 to 4.5. It was concluded that both previous mining operations and natural erosion of the Allchar mine on Kožuf Mountain caused enrichment in the Holocene alluvium. High levels were also found in the river sediments of the Vardar River, which can be attributed to the spread of polluted soils and sediments due to Pb-Zn smelting in the city of Veles [63].

4.2.3. Copper Mine “Bučim” [144]

The Bučim copper mine is located close to the city Radoviš in eastern North Macedonia. The study area covers 400 km². The copper ore is processed by flotation into Cu concentrate, with an annual capacity of 4 million tonnes. Over 150 million tonnes of flotation waste is exposed to continuous wind and water particulate matter mobility [122].

In order to evaluate the health risk assessment, the distribution and characterisation of 20 elements (Ag, Al, As, Ba, Ca, Cd, Co, Cr, Cu, Fe, Ga, K, Li, Mg, Mn, Mo, Na, Ni, Pb, Sr, V and Zn) were investigated [144]. For this purpose, 40 soil samples were collected from two depths (0–5 cm and 20–30 cm) on a sampling grid of 5 × 5 km. The average median Cu content (23 mg/kg) is relatively low, except in the vicinity of the copper mine and the processing plants (9.3–1200 mg/kg). However, the ratio of Cu enrichment in the soil (subsoil/topsoil) is 2.8, whereas it is ~10 in the vicinity of the mine due to dust mobility at the mine site. No significant enrichment ratios were identified for the other common PTEs (Pb, Ni, V and Zn). The content of lithogenic elements (Al, As, Cr, Ga, Fe, Li, Mg, Mn,

Na, Ni, Sr) is stable in the vertical direction (subsoil/topsoil) but varies in the transverse direction depending on the local geology.

4.2.4. Coal Mine and Thermoelectric Power Plant “Oslomej” near the Town of Kičevo [115]

The town of Kičevo is located in the Kičevo Valley in the western part of the country. Kičevo is an important industrial centre in this part of North Macedonia, mostly due to the iron mine in Tajmište (currently closed), the coal mine “Oslomej” and the thermoelectric power plant “Oslomej”, which began operating in 1980. The research area covers 148 km² and includes 52 sampling sites in a sampling grid of 2 × 2 km and 1 × 1 km in the urban zone and around the thermoelectric power plant. The surface samples were collected and analysed for 18 elements using the ICP-AES technique.

The spatial distribution of some PTEs (Pb, Zn, and Cd) shows some trends indicating a local anthropogenic origin. The river transport processes from the iron mine “Tajmište” affected the distribution of Pb, while the distribution of Zn was influenced by the operation of the metal industry. Their average levels are 3–4-times higher compared to the European average, which indicates their anthropogenic origin.

Along the Zajaska and Oslomej rivers, the average Cd levels are up to 50% higher than the background levels. The surrounding Palaeozoic rocks are naturally enriched with these chemicals, but the anthropogenic origin is more significant. The average background levels for Pb (64 mg/kg Pb) are about three-times lower compared to those along the Zajaska River (170 mg/kg) or near the coal mine (200 mg/kg Pb), which are above the target values of the New Dutch List [145].

The distribution of Zn is similar to that of Pb. Thus, the average background content of Zn is 94 mg/kg but 320 mg/kg in the urban area of Kičevo, which exceeds the target values and, in some samples, the intervention values of the New Dutch List [145]. This also indicates an anthropogenic influence, mainly due to the processing industry in Kičevo.

4.2.5. Elemental Distribution in Soil from the City of Skopje [117,118]

Skopje is the capital and the largest city of North Macedonia, with a total population of 550,000 people. It is the political, cultural, economic and academic centre of the country. The Skopje region, which includes the city of Skopje and some smaller neighbouring municipalities, accounts for 45.5% of North Macedonia’s GDP. The city’s industry is dominated by food processing, textiles, printing and metal processing, including steel production.

The surface samples (0–10 cm) from 231 sampling sites were collected in order to assess the origin and distribution of elements in Skopje. All samples were analysed for 18 elements by ICP-AES and for 47 elements by ICP-MS in two different laboratories.

The results show that the distribution of macro-elements is influenced by the geological formations: Quaternary alluvial deposits, Quaternary marsh deposits and younger Quaternary river terraces, Pliocene and Mesozoic sediments, and Paleozoic rocks. A comparative analysis was carried out between the analysed elements in the soils of North Macedonia [28] and Europe [13]. The spatial distributions of most elements correspond to the lithogenic origin of the rocks.

The levels of Al, Ca and Mg are slightly increased compared to the national average values. The increased levels of Cr and Ni are found in the Vardar zone. Based on the results of the multivariate statistical analyses, several geochemical associations were clustered: Al-Ba-K-Na, Cr-Fe-Mg-Ni, Cd-Cu-Zn and Ca-Sr.

Depending on the land use, higher element contents are found in agricultural and urban areas (Figure 10A). The higher levels of Al-Ba-K-Na (Figure 10A) in samples from the southeastern to the northeastern part of the study area are influenced by the swamp sediments and young and old Quaternary terraces. Higher levels of Cr-Fe-Mg-Ni (Figure 10B) occur in the western and northwestern parts of the city, where sediments from the Pliocene, younger and older Quaternary sediments, and Miocene sediments predominate.

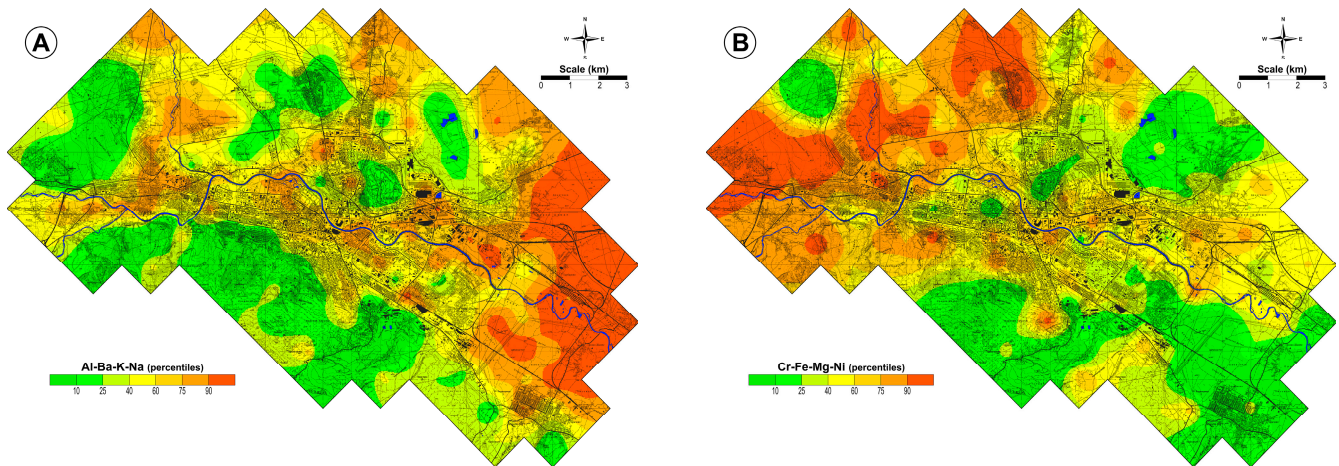


Figure 10. Spatial distribution of geochemical associations in the city of Skopje: (A) Al-Ba-K-Na; (B) Cr-Fe-Mg-Ni [118].

The soils in the east and north of Skopje, which are mostly covered with Quaternary swamp sediments and young Quaternary sediments, have higher levels of Cd, Cu and Zn, which shows both a lithogenic and anthropogenic origin. The highest levels are found in the industrial area of the city, most likely due to contamination from steel mills (Figure 11A). The last association includes Ca-Sr (Figure 11B), which shows a solely geogenic origin. Its levels are connected to Pliocene sediments, Quaternary young and older river terraces, and Miocene and Quaternary swamp sediments in the south and southeast of the study area.

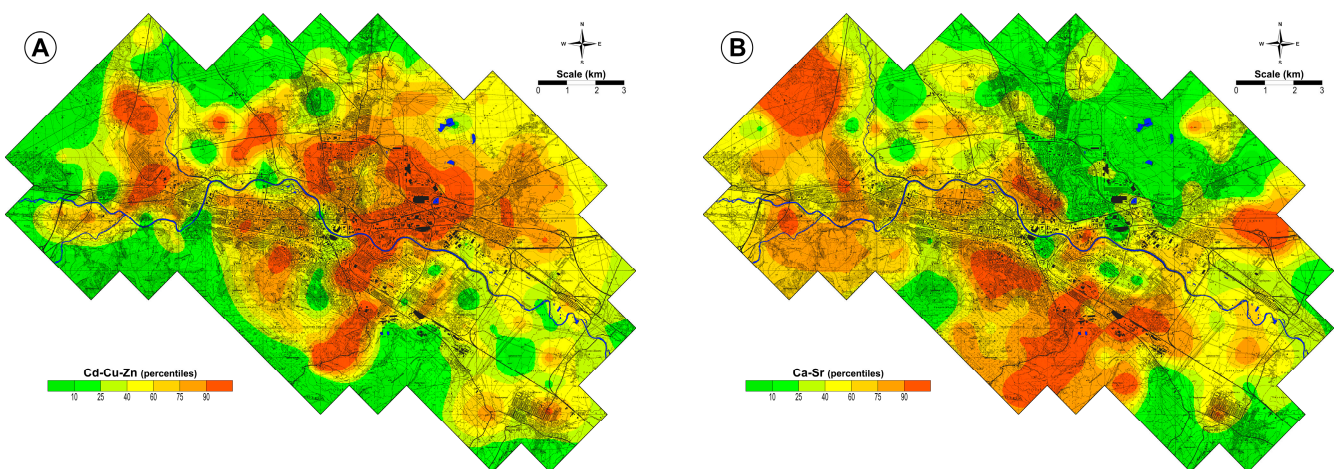


Figure 11. Spatial distribution of geochemical associations in the city of Skopje: (A) Cd-Cu-Zn; (B) Ca-Sr [118].

In addition to the elements shown on the distribution maps, the average levels of As (14 mg/kg) and Pb (100 mg/kg) are determined in the study area. The range for As extends from 0.05 mg/kg up to 68 mg/kg. The highest levels are only found at a few isolated sites in the urban zone, but in general, the average values are below the target value according to Dutch standards [115]. The Pb ranges from 5.0 mg/kg to 2900 mg/kg, with the highest levels indicating an anthropogenic origin due to metal processing activities.

4.2.6. Sb-As-Tl Allchar Mine [87]

The Allchar locality is a rare outcrop of As-Sb-Tl mineralisation, on the Kožuf Mountains. The locality of Allchar is unique in its mineral composition, with a total of 45 different minerals [146,147]. In addition to As, Sb and Tl, the other elements of economic interest present are Au, Hg, Ba, as well as traces of Pb, Zn and Cu. It has been confirmed

that the Allchar deposit contains economic grades of Tl (0.1%–0.5%), Sb (up to 2.5%), As (1.5%) and Au (>1 g/t) [148]. The mine was active until 1912 and produced arsenic and antimony concentrates.

The entire study area (approx. 13 km²) was covered by 67 sites, where samples from topsoil (0–5 cm) and subsoil (20–30 cm) were collected and analysed for 67 elements using ICP-MS and ICP-AES.

The main focus was to study the behaviour of As, Sb and Tl (Figure 12) to distinguish between natural enrichment and human impact due to the following: (i) the effects of past volcanism, (ii) mineralisation and (iii) past mining activities.

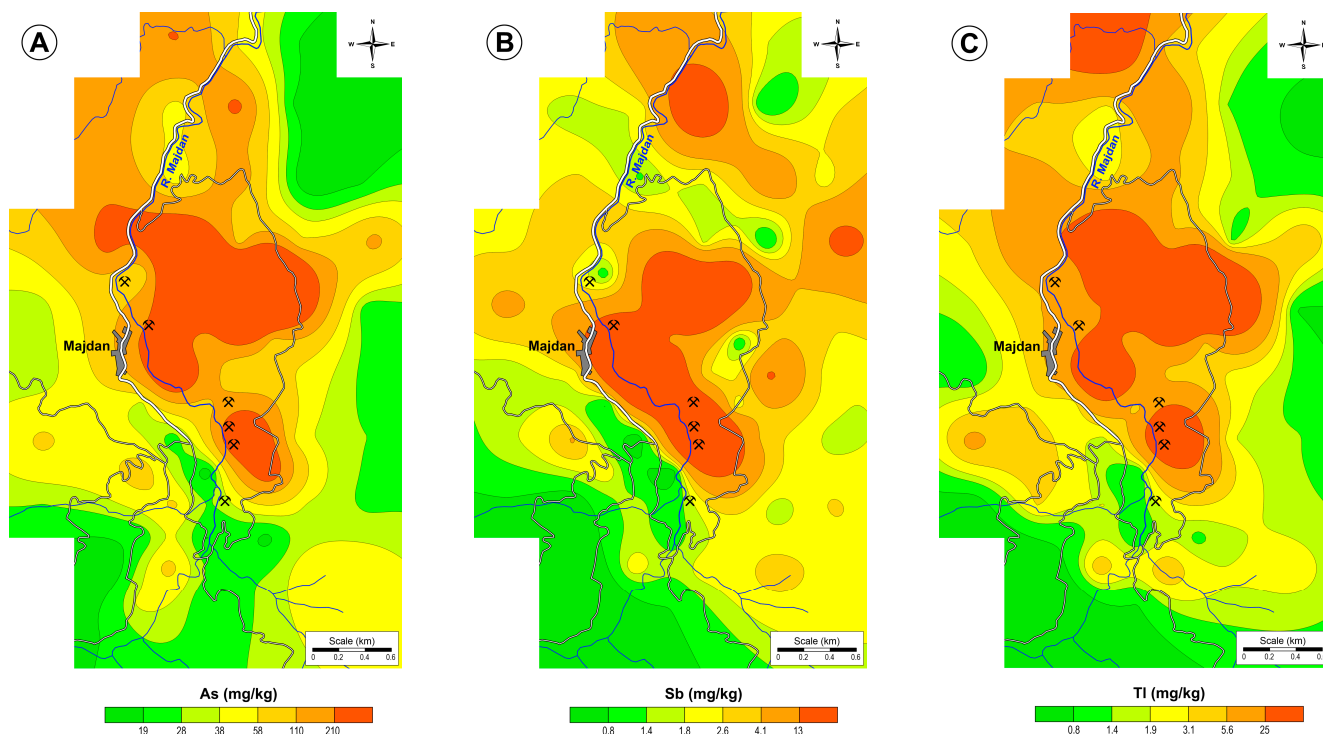


Figure 12. Spatial distribution in Allchar deposit area: (A) arsenic; (B) antimony; (C) thallium.

The As levels in the vicinity of the Allchar mine exceed both the action (55 mg/kg) and the target values (29 mg/kg) according to the New Dutch List and are 90-times higher than the European average. Similar trends with extremely high levels are identified for Sb and Tl. The enrichment ratio of Sb (between 0.24 and 3200 mg/kg) exceeds the European average by 20-times and that for Tl more than 260-times compared to the rest of the Allchar area. All three elements are strongly dependent on the lithology.

4.3. Application of Artificial Neural Networks (ANN-MP) in Geochemical Investigations, North Macedonia [67,149,150]

The Artificial Neural Network–Multilayer Perceptron (ANN-MLP) was used to improve the reconstruction of the main distribution pathways, assess the real size of the affected area and improve the interpretation of the data at two selected sites. This advanced predictive modelling technique combined soil measurements with data from DEM, land cover data and remote sensing developed by Alijagić [149,150].

ANNs represent a method of artificial intelligence based on an analogy of the human brain. Artificial neural networks simulate biological neural networks, whereby the function of a neural network is determined by a model of highly interconnected neurons, a network structure and a learning algorithm. The ANN method can be used to solve specific problems, like pattern recognition and data classification [149,151,152].

The multilayer perceptron (MLP) is the most commonly used ANN, especially in environmental studies. This method can be used for tasks such as feature matching and

pattern recognition problems. In addition, MLP can be used to prove the classification of linear, inseparable patterns. MLP represents feedforward neural networks (FNNs), with multiple layers of units between the input and output layers [150]. Compared to other commercial and freely available software packages that allow users to implement neural networks relatively easily by offering only a limited number of training algorithms, the MLP offers an unlimited number of algorithms to achieve better results [153].

The main objective of this section is to compare and improve spatial distribution models for small-scale As-Sb-Tl geochemical associations (Figure 13) and the spatial distribution of Pb at macro-regional-scale (Figure 14) test sites in soil, comparing two methods, universal kriging and artificial intelligence (ANN-MLP). Two river basins in the eastern part of North Macedonia were selected as the main study area, as the anthropogenic impact of long-term mining activities is particularly significant here, and the area is also morphologically and geologically complex.

The comparative data outputs led to the general conclusion that ANN-MPL provides more realistic, reliable and comprehensive results than the universal kriging method. The construction of geochemical maps using the kriging method is much simpler, but the results are not representative, mainly due to errors known as the “Bull’s eye” effect, as elongated partitioning occurs in isotropic space. This could possibly be solved by increasing the number of sampling sites or using a denser sampling grid.

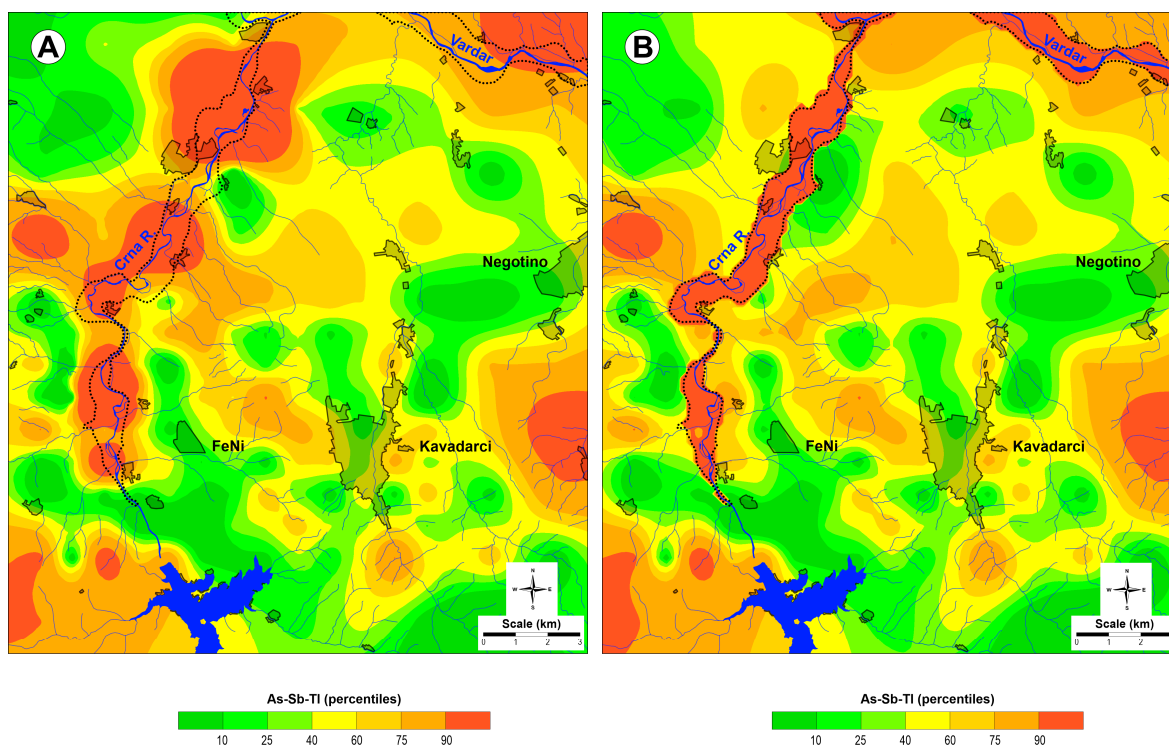


Figure 13. Distribution of geochemical associations: As-Sb-Tl in Kavadarci area (A) after application of universal kriging; (B) after application of ANN-MLP (The dotted lines means a border of alluvial plains).

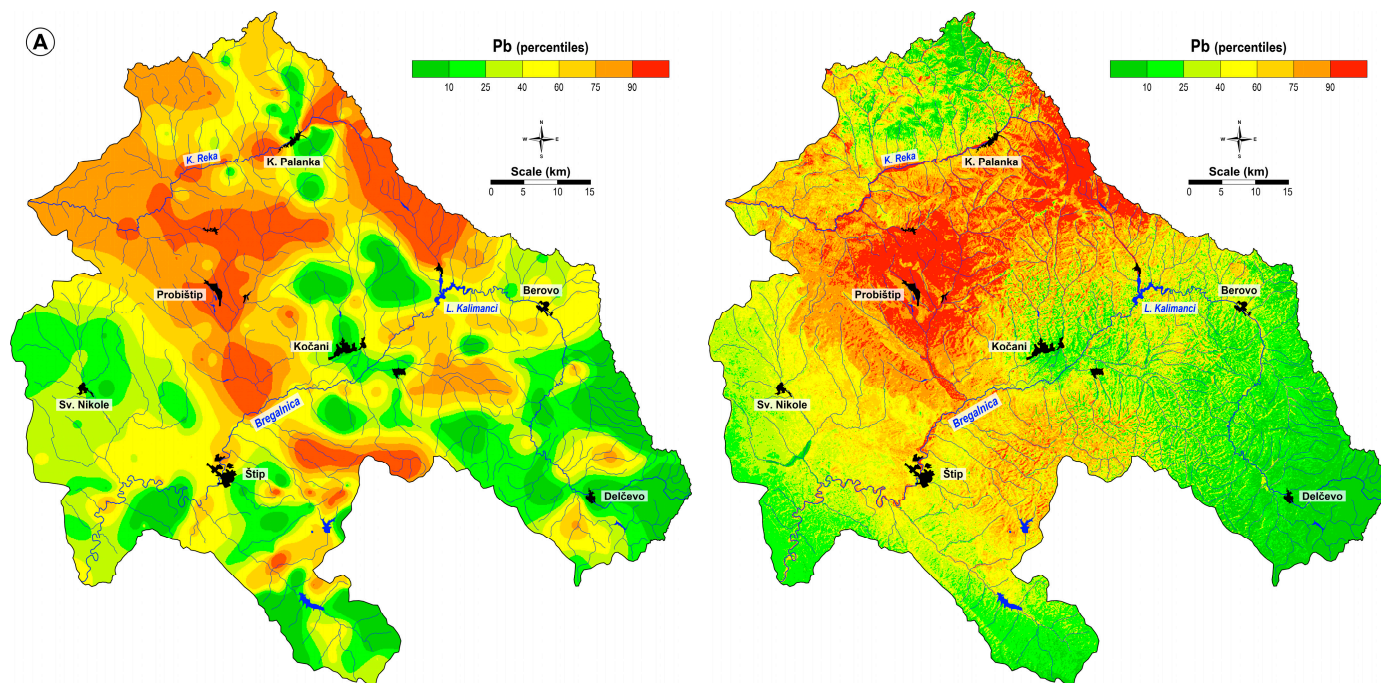


Figure 14. Distribution of Pb in Bregalnica–Kriva Reka area: (A) after application of universal kriging; (B) after application of ANN-MLP [67].

5. Conclusions

This is a review article about the long-term successful cooperation between the Geological Survey of Slovenia and the Faculty of Natural Sciences in Skopje, Ss. Cyril and Methodius University in Skopje but also some other institutions from Russia, the Joint Institute for Nuclear Research in Dubna, Moscow Region, Russia, and the Romanian Research Institute for Analytical Instrumentation (ICIA). The main contribution comes from the voluntary and enthusiastic work of Prof. Trajče Stafilov's group and his PhD and Master's students.

In less than two decades (2007–2023) of fruitful collaboration, a large number of scientific papers have been published: 8 geochemical atlases (Veles, Kavadarci, Kičevo, Radoviš, Bregalnica River Basin, Pelagonia Valley, Skopje, North Macedonia); 23 chapters in monographs; 188 scientific publications; 12 invited lectures; and 100 conference presentations. This tremendous work was recognised with two state awards from the Government of the Republic of Macedonia "Goce Delčev" for scientific achievements in 2009 and 2016.

In all considered case studies, the obtained data were processed with multivariate statistical methods (such as HCA, FA and PCA), but for the creation of predictive maps, universal kriging methods were applied. To improve the reconstruction of the main distribution pathways, estimate the real size of the affected area and improve data interpretation at the two selected sites, the artificial neural network–multilayer perceptron (ANN-MLP) was successfully applied. This advanced predictive modelling technique combined soil measurements with data obtained from DEM, land cover data and remote sensing.

For the creation of the Geochemical Atlas, the territory of North Macedonia was covered, with a sampling grid of 5×5 km, but a much denser sampling grid was used in all other 16 selected studies. However, the total sum of all collected soil samples amounts to 3983 from 2449 different sampling sites in the period from 2006 to 2017. The soil samples were mainly collected from two depths (0–5 cm and 20–30 cm). The methods of soil sampling are very comparable according to the European guidelines, often the same or do not consider different soil layers. In Bitola, Bregalnica, Tobacco Fields, composite samples from 0 to 30 cm were taken, and in Kičevo, Skopje and Veles, only topsoil (0–5 cm) was taken.

The analyses were performed at the Institute of Chemistry of the Faculty of Natural Sciences in Skopje, Ss. Cyril and Methodius University in Skopje, North Macedonia, at

the Research Institute for Analytical Instrumentation (ICIA), Cluj-Napoca, Romania, at the Joint Institute for Nuclear Research in Dubna, Moscow Region, Russia, and at Acme Labs, Vancouver, Canada. The sum of all analysed soil samples in all four mentioned laboratories is 7991 in the period from 2006 to 2017.

It is important to emphasise that the aforementioned scientific work has been financially supported by government agencies but is the result of personal keenness, enthusiasm and volunteer work.

Author Contributions: Conceptualization, T.S. and R.Š.; methodology, T.S. and R.Š.; software, R.Š.; validation, R.Š.; resources, T.S. and R.Š.; writing—original draft preparation, T.S., R.Š. and J.A.; writing—review and editing, T.S., R.Š. and J.A. All authors have read and agreed to the published version of the manuscript.

Funding: Data processing was partially supported by the Slovenian Research Agency under the Research program Mineral Resources (P1-0025).

Data Availability Statement: Data are contained within the manuscript.

Acknowledgments: The authors are greatly appreciative to the following students of Trajče Stafilov for their participation in this study in its various stages: Katerina Bačeva Andonovska, Biljana Balabanova, Svetlana Angelovska, Ružica Blaževska, Danica Božinova, Danica Damčevska, Biljana Dimkova, Bojana Dimovska, Marija Jeftimova, Ivana Mickovska, Maja Ocevka, Kristina Petrovska, Ana Puteska, Angja Culumoska Gjorgjievka, Sandra Cančalova and Suzana Veličkovski-Simonović.

Conflicts of Interest: The authors declare no conflicts of interest.

References

1. Kabata-Pendias, A. *Trace Elements in Soils and Plants*, 4th ed.; CRC Press: Boca Raton, FL, USA, 2010; ISBN 9780429192036.
2. Kabata-Pendias, A.; Mukherjee, A.B. *Trace Elements from Soil to Human*; Springer: Berlin/Heidelberg, Germany, 2007; ISBN 978-3-540-32713-4.
3. Bowen, H.J.M. *Environmental Chemistry of the Elements*; Academic Press: New York, NY, USA, 1979.
4. Nieder, R.; Benbi, D.K.; Reichl, F.X. Role of Potentially Toxic Elements in Soils. In *Soil Components and Human Health*; Springer: Dordrecht, The Netherlands, 2018; pp. 375–450.
5. Mehmood, S.; Wang, X.; Ahmed, W.; Imtiaz, M.; Ditta, A.; Rizwan, M.; Irshad, S.; Bashir, S.; Saeed, Q.; Mustafa, A.; et al. Removal Mechanisms of Slag against Potentially Toxic Elements in Soil and Plants for Sustainable Agriculture Development: A Critical Review. *Sustainability* **2021**, *13*, 5255. [[CrossRef](#)]
6. Mirsal, I.A. *Soil Pollution: Origin, Monitoring & Remediation*, 2nd ed.; Springer: Berlin/Heidelberg, Germany, 2008.
7. Förstner, U.; Salomons, W.; Mader, P. *Heavy Metals—Problems and Solutions*; Förstner, U., Salomons, W., Mader, P., Eds.; Springer: Berlin/Heidelberg, Germany, 1995; ISBN 978-3-642-79318-9.
8. Desaulles, A.; Ammann, S.; Schwab, P. Advances in Long-term Soil-pollution Monitoring of Switzerland. *J. Plant Nutr. Soil Sci.* **2010**, *173*, 525–535. [[CrossRef](#)]
9. Wei, B.; Yang, L. A Review of Heavy Metal Contaminations in Urban Soils, Urban Road Dusts and Agricultural Soils from China. *Microchem. J.* **2010**, *94*, 99–107. [[CrossRef](#)]
10. Adriano, D.C. *Trace Elements in Terrestrial Environments*; Springer: New York, NY, USA, 2001; ISBN 978-1-4684-9505-8.
11. Goldhaber, M.; Banwart, S.A. Soil Formation. In *Soil Carbon Science, Management and Policy for Multiple Benefits*; Banwart, S.A., Noellemeyer, E., Milne, E., Eds.; CAB International: Wallingford, UK, 2014; pp. 82–97.
12. Knox, A.S.; Erdinger, A.P.; Adriano, D.C.; Kolka, R.K.; Kaplan, D.I. Sources and Practices Contributing to Soil Contamination. In *Bioremediation of Contaminated Soils*; Adriano, D.C., Bollag, J.M., Frenkerberger, W.T., Sims, R.C., Eds.; American Society of Agronomy: Madison, WI, USA, 1999; pp. 53–87. ISBN 9780891181378.
13. Salminen, R.; Tarvainen, T.; Demetriades, A.; Duris, M.; Fordyce, F.M.; Gregorauskiene, V.; Kahelin, H.; Kivisilla, J.; Klaver, G.; Klin, H.; et al. *Geochemical Atlas of Europe. Background Information, Methodology and Maps*; Geological Survey of Finland: Espoo, Finland, 2005.
14. De Vos, W.; Tarvainen, T.; Salminen, R.; Reeder, S.; De Vivo, B.; Demetriades, A.; Pirc, S.; Batista, M.J.; Marsina, K.; Ottesen, R.T.; et al. *Geochemical Atlas of Europe. Part 2, Interpretation of Geochemical Maps, Additional Tables, Figures, Maps, and Related Publications*; Geological Survey of Finland: Espoo, Finland, 2006; ISBN 951-690-956-6.
15. Reimann, C.; Birke, M.; Demetriades, A.; Filzmoser, P.; O'Connor, P. *Chemistry of Europe's Agricultural Soils—Part A: Methodology and Interpretation of the GEMAS Data Set*; Geologisches Jahrbuch Reihe B, Band B 103; Schweizerbart Science Publishers: Stuttgart, Germany, 2014; ISBN 978-3-510-96846-6.

16. Reimann, C.; Birke, M.; Demetriades, A.; Filzmoser, P.; O'Connor, P.; Akinfiev, G.; Albanese, S.; Amashukeli, Y.; Andersson, M.; Arnoldussen, A.; et al. *Chemistry of Europe's Agricultural Soils—Part B: General Background Information and Further Analysis of the GEMAS Data Set*; Geologisches Jahrbuch Reihe B, Band B 103; Schweizerbart Science Publishers: Stuttgart, Germany, 2014; ISBN 978-3-510-96847-3.
17. Barzi, F.; Naidu, R.; McLaughlin, M.J. Contaminants and the Australian Soil Environment. In *Contaminants and the Soil Environment in the Australasia-Pacific Region, Proceedings of the First Australasia-Pacific Conference on Contaminants and Soil Environment in the Australasia-Pacific Region, Adelaide, Australia, 18–23 February 1996*; Naidu, R., Kookana, R.S., Oliver, D.P., Rogers, S., McLaughlin, M.J., Eds.; Springer: Dordrecht, The Netherlands, 1996; pp. 451–484.
18. Salminen, R.; Chekushin, V.; Tenhola, M.; Bogatyrev, I.; Glavatskikh, S.P.; Fedotova, E.; Gregorauskiene, V.; Kashulina, G.; Niskavaara, H.; Polischuok, A.; et al. *Geochemical Atlas of the Eastern Barents Region*; Elsevier: Amsterdam, The Netherlands, 2004; ISBN 0-444-51815-0.
19. Bretzel, F.; Calderisi, M. Metal Contamination in Urban Soils of Coastal Tuscany (Italy). *Environ. Monit. Assess.* **2006**, *118*, 319–335. [[CrossRef](#)] [[PubMed](#)]
20. Davidson, C.M.; Urquhart, G.J.; Ajmone-Marsan, F.; Biasioli, M.; da Costa Duarte, A.; Diaz-Barrientos, E.; Grčman, H.; Hossack, I.; Hursthouse, A.S.; Madrid, L.; et al. Fractionation of Potentially Toxic Elements in Urban Soils from Five European Cities by Means of a Harmonised Sequential Extraction Procedure. *Anal. Chim. Acta* **2006**, *565*, 63–72. [[CrossRef](#)]
21. Micó, C.; Recatalá, L.; Peris, M.; Sánchez, J. Assessing Heavy Metal Sources in Agricultural Soils of an European Mediterranean Area by Multivariate Analysis. *Chemosphere* **2006**, *65*, 863–872. [[CrossRef](#)] [[PubMed](#)]
22. Halamić, J.; Miko, S. *Geochemical Atlas of the Republic of Croatia*; Croatian Geological Survey: Zagreb, Croatia, 2009; ISBN 978-953-6907-18-2.
23. Reimann, C.; Åyräs, M.; Chekushin, V.A.; Bogatyrev, I.V.; Boyd, R.; de Caritat, P.; Dutter, R.; Finne, T.E.; Halleraker, J.H.; Jæger, Ø.; et al. *Environmental Geochemical Atlas of the Central Barents Region*; Reimann, C., Åyräs, M., Chekushin, V., Eds.; Schweizerbart Science Publishers: Stuttgart, Germany, 2010; ISBN 9783510652631.
24. Birch, G.F.; Vanderhayden, M.; Olmos, M. The Nature and Distribution of Metals in Soils of the Sydney Estuary Catchment, Australia. *Water Air Soil Pollut.* **2011**, *216*, 581–604. [[CrossRef](#)]
25. Braga Bueno Guerra, M.; Schaefer, C.E.G.R.; de Freitas Rosa, P.; Simas, F.N.B.; Pereira, T.T.C.; Rodrigues Pereira-Filho, E. Heavy Metals Contamination in Century-Old Manmade Technosols of Hope Bay, Antarctic Peninsula. *Water Air Soil Pollut.* **2011**, *222*, 91–102. [[CrossRef](#)]
26. Cicchella, D.; Giaccio, L.; Lima, A.; Albanese, S.; Cosenza, A.; Civitillo, D.; De Vivo, B. Assessment of the Topsoil Heavy Metals Pollution in the Sarno River Basin, South Italy. *Environ. Earth Sci.* **2014**, *71*, 5129–5143. [[CrossRef](#)]
27. Freije, A.M. Heavy Metal, Trace Element and Petroleum Hydrocarbon Pollution in the Arabian Gulf: Review. *J. Assoc. Arab. Univ. Basic Appl. Sci.* **2015**, *17*, 90–100. [[CrossRef](#)]
28. Stafilov, T.; Šajn, R. *Geochemical Atlas of the Republic of Macedonia*; Faculty of Natural Sciences and Mathematics, Ss. Cyril and Methodius University in Skopje: Skopje, North Macedonia, 2016; ISBN 978-608-4762-04-1.
29. Šajn, R.; Ristović, I.; Čeplak, B. Mining and Metallurgical Waste as Potential Secondary Sources of Metals—A Case Study for the West Balkan Region. *Minerals* **2022**, *12*, 547. [[CrossRef](#)]
30. Chen, T.-B.; Zheng, Y.-M.; Lei, M.; Huang, Z.-C.; Wu, H.-T.; Chen, H.; Fan, K.-K.; Yu, K.; Wu, X.; Tian, Q.-Z. Assessment of Heavy Metal Pollution in Surface Soils of Urban Parks in Beijing, China. *Chemosphere* **2005**, *60*, 542–551. [[CrossRef](#)]
31. Wang, X.S.; Qin, Y.; Sang, S.X. Accumulation and Sources of Heavy Metals in Urban Topsoils: A Case Study from the City of Xuzhou, China. *Environ. Geol.* **2005**, *48*, 101–107. [[CrossRef](#)]
32. Diawara, M.M.; Litt, J.S.; Unis, D.; Alfonso, N.; Martinez, L.; Crock, J.G.; Smith, D.B.; Carsella, J. Arsenic, Cadmium, Lead, and Mercury in Surface Soils, Pueblo, Colorado: Implications for Population Health Risk. *Environ. Geochem. Health* **2006**, *28*, 297–315. [[CrossRef](#)] [[PubMed](#)]
33. de Moura, M.C.S.; Lopes, A.N.C.; Moita, G.C.; Moita Neto, J.M. Estudo Multivariado de Solos Urbanos Da Cidade de Teresina. *Quím. Nova* **2006**, *29*, 429–435. [[CrossRef](#)]
34. Crnković, D.; Ristić, M.; Antonović, D. Distribution of Heavy Metals and Arsenic in Soils of Belgrade (Serbia and Montenegro). *Soil Sediment Contam. Int. J.* **2006**, *15*, 581–589. [[CrossRef](#)]
35. Kaur, R.; Rani, R. Spatial Characterization and Prioritization of Heavy Metal Contaminated Soil-Water Resources in Peri-Urban Areas of National Capital Territory (NCT), Delhi. *Environ. Monit. Assess.* **2006**, *123*, 233–247. [[CrossRef](#)] [[PubMed](#)]
36. Figueiredo, A.M.G.; Nogueira, C.A.; Saiki, M.; Milian, F.M.; Domingos, M. Assessment of Atmospheric Metallic Pollution in the Metropolitan Region of São Paulo, Brazil, Employing *Tillandsia usneoides* L. as Biomonitor. *Environ. Pollut.* **2007**, *145*, 279–292. [[CrossRef](#)]
37. Bakirdere, S.; Yaman, M. Determination of Lead, Cadmium and Copper in Roadside Soil and Plants in Elazığ, Turkey. *Environ. Monit. Assess.* **2007**, *136*, 401–410. [[CrossRef](#)]
38. Faiz, Y.; Tufail, M.; Javed, M.T.; Chaudhry, M.M. Naila-Siddique Road Dust Pollution of Cd, Cu, Ni, Pb and Zn along Islamabad Expressway, Pakistan. *Microchem. J.* **2009**, *92*, 186–192. [[CrossRef](#)]
39. Kadi, M.W. "Soil Pollution Hazardous to Environment": A Case Study on the Chemical Composition and Correlation to Automobile Traffic of the Roadside Soil of Jeddah City, Saudi Arabia. *J. Hazard. Mater.* **2009**, *168*, 1280–1283. [[CrossRef](#)]

40. Morton-Bermea, O.; Hernández-Álvarez, E.; González-Hernández, G.; Romero, F.; Lozano, R.; Beramendi-Orosco, L.E. Assessment of Heavy Metal Pollution in Urban Topsoils from the Metropolitan Area of Mexico City. *J. Geochem. Explor.* **2009**, *101*, 218–224. [[CrossRef](#)]
41. Plyaskina, O.V.; Ladonin, D.V. Heavy Metal Pollution of Urban Soils. *Eurasian Soil Sci.* **2009**, *42*, 816–823. [[CrossRef](#)]
42. Ajmone-Marsan, F.; Biasioli, M. Trace Elements in Soils of Urban Areas. *Water Air Soil Pollut.* **2010**, *213*, 121–143. [[CrossRef](#)]
43. Galindo, N.; Varea, M.; Gil-Moltó, J.; Yubero, E.; Nicolás, J. The Influence of Meteorology on Particulate Matter Concentrations at an Urban Mediterranean Location. *Water Air Soil Pollut.* **2011**, *215*, 365–372. [[CrossRef](#)]
44. Meena, N.K.; Maiti, S.; Shrivastava, A. Discrimination between Anthropogenic (Pollution) and Lithogenic Magnetic Fraction in Urban Soils (Delhi, India) Using Environmental Magnetism. *J. Appl. Geophys.* **2011**, *73*, 121–129. [[CrossRef](#)]
45. Davis, B.S.; Birch, G.F. Spatial Distribution of Bulk Atmospheric Deposition of Heavy Metals in Metropolitan Sydney, Australia. *Water Air Soil Pollut.* **2011**, *214*, 147–162. [[CrossRef](#)]
46. Papastergios, G.; Filippidis, A.; Fernandez-Turiel, J.-L.; Gimeno, D.; Sikalidis, C. Surface Soil Geochemistry for Environmental Assessment in Kavala Area, Northern Greece. *Water Air Soil Pollut.* **2011**, *216*, 141–152. [[CrossRef](#)]
47. Olawoyin, R.; Oyewole, S.A.; Grayson, R.L. Potential Risk Effect from Elevated Levels of Soil Heavy Metals on Human Health in the Niger Delta. *Ecotoxicol. Environ. Saf.* **2012**, *85*, 120–130. [[CrossRef](#)]
48. Massas, I.; Kalivas, D.; Ehaliotis, C.; Gasparatos, D. Total and Available Heavy Metal Concentrations in Soils of the Thriassio Plain (Greece) and Assessment of Soil Pollution Indexes. *Environ. Monit. Assess.* **2013**, *185*, 6751–6766. [[CrossRef](#)]
49. Taghipour, H.; Mosafieri, M.; Armanfar, F.; Gaemmagami, S.J. Heavy Metals Pollution in the Soils of Suburban Areas in Big Cities: A Case Study. *Int. J. Environ. Sci. Technol.* **2013**, *10*, 243–250. [[CrossRef](#)]
50. Chabukdhara, M.; Nema, A.K. Heavy Metals Assessment in Urban Soil around Industrial Clusters in Ghaziabad, India: Probabilistic Health Risk Approach. *Ecotoxicol. Environ. Saf.* **2013**, *87*, 57–64. [[CrossRef](#)]
51. Hu, Y.; Liu, X.; Bai, J.; Shih, K.; Zeng, E.Y.; Cheng, H. Assessing Heavy Metal Pollution in the Surface Soils of a Region That Had Undergone Three Decades of Intense Industrialization and Urbanization. *Environ. Sci. Pollut. Res.* **2013**, *20*, 6150–6159. [[CrossRef](#)]
52. Šorša, A.; Halamić, J. *Geochemical Atlas of Sisak*; Croatian Geological Survey: Zagreb, Croatia, 2014.
53. Argyraki, A.; Kelepertzis, E. Urban Soil Geochemistry in Athens, Greece: The Importance of Local Geology in Controlling the Distribution of Potentially Harmful Trace Elements. *Sci. Total Environ.* **2014**, *482–483*, 366–377. [[CrossRef](#)] [[PubMed](#)]
54. Czarnecki, S.; Düring, R.-A. Influence of Long-Term Mineral Fertilization on Metal Contents and Properties of Soil Samples Taken from Different Locations in Hesse, Germany. *SOIL* **2015**, *1*, 23–33. [[CrossRef](#)]
55. Karim, Z.; Qureshi, B.A.; Mumtaz, M. Geochemical Baseline Determination and Pollution Assessment of Heavy Metals in Urban Soils of Karachi, Pakistan. *Ecol. Indic.* **2015**, *48*, 358–364. [[CrossRef](#)]
56. Lourenço, R.W.; Landim, P.M.B.; Rosa, A.H.; Roveda, J.A.F.; Martins, A.C.G.; Fraceto, L.F. Mapping Soil Pollution by Spatial Analysis and Fuzzy Classification. *Environ. Earth Sci.* **2010**, *60*, 495–504. [[CrossRef](#)]
57. Stafilov, T.; Šajn, R.; Pančevski, Z.; Boev, B.; Frontasyeva, M.V.; Strelkova, L.P. Heavy Metal Contamination of Topsoils around a Lead and Zinc Smelter in the Republic of Macedonia. *J. Hazard. Mater.* **2010**, *175*, 896–914. [[CrossRef](#)]
58. Escarré, J.; Lefèbvre, C.; Raboyeau, S.; Dossantos, A.; Gruber, W.; Cleyet Marel, J.C.; Frérot, H.; Noret, N.; Mahieu, S.; Collin, C.; et al. Heavy Metal Concentration Survey in Soils and Plants of the Les Malines Mining District (Southern France): Implications for Soil Restoration. *Water Air Soil Pollut.* **2011**, *216*, 485–504. [[CrossRef](#)]
59. Lavazzo, P.; Ducci, D.; Adamo, P.; Trifuoggi, M.; Migliozi, A.; Boni, M. Impact of Past Mining Activity on the Quality of Water and Soil in the High Moulouya Valley (Morocco). *Water Air Soil Pollut.* **2012**, *223*, 573–589. [[CrossRef](#)]
60. D’Emilio, M.; Caggiano, R.; Macchiato, M.; Ragosta, M.; Sabia, S. Soil Heavy Metal Contamination in an Industrial Area: Analysis of the Data Collected during a Decade. *Environ. Monit. Assess.* **2013**, *185*, 5951–5964. [[CrossRef](#)]
61. Li, Z.; Ma, Z.; van der Kuijp, T.J.; Yuan, Z.; Huang, L. A Review of Soil Heavy Metal Pollution from Mines in China: Pollution and Health Risk Assessment. *Sci. Total Environ.* **2014**, *468–469*, 843–853. [[CrossRef](#)]
62. Modis, K.; Vatalis, K.I. Assessing the Risk of Soil Pollution around an Industrialized Mining Region Using a Geostatistical Approach. *Soil Sediment Contam. Int. J.* **2014**, *23*, 63–75. [[CrossRef](#)]
63. Popov, S.I.; Stafilov, T.; Šajn, R.; Tănăselia, C. Distribution of Trace Elements in Sediment and Soil from River Vardar Basin, Macedonia/Greece. *J. Environ. Sci. Health Part A* **2016**, *51*, 1–14. [[CrossRef](#)]
64. Balabanova, B.; Stafilov, T.; Šajn, R. Enriching Anthropogenic Element Trackers for Evidence of Long-Term Atmospheric Depositions in Mine Environs. *J. Environ. Sci. Health Part A Toxic/Hazard. Subst. Environ. Eng.* **2019**, *54*, 988–998. [[CrossRef](#)]
65. Tomovski, D.; Bačeva Andonovska, K.; Šajn, R.; Karadjov, M.; Stafilov, T. Distribution of Chemical Elements in Sediments and Alluvial Soil from the Crna Reka River Basin. *Geol. Maced.* **2019**, *33*, 125–145.
66. Vasilevska, S.; Stafilov, T.; Šajn, R. Distribution of Trace Elements in Sediments and Soil from Crn Drim River Basin, Republic of Macedonia. *SN Appl. Sci.* **2019**, *1*, 555. [[CrossRef](#)]
67. Šajn, R.; Stafilov, T.; Balabanova, B.; Alijagić, J. Multi-Scale Application of Advanced ANN-MLP Model for Increasing the Large-Scale Improvement of Digital Data Visualisation Due to Anomalous Lithogenic and Anthropogenic Elements Distribution. *Minerals* **2022**, *12*, 174. [[CrossRef](#)]
68. Stafilov, T.; Šajn, R.; Blaževska, R.; Tănăselia, C. Assessment of Natural and Anthropogenic Factors on the Distribution of Chemical Elements in Soil from the Skopje Region, North Macedonia. *J. Environ. Sci. Health Part A* **2022**, *57*, 357–375. [[CrossRef](#)]

69. Steiner, T.M.C.; Bertrandsson Erlandsson, V.; Šajn, R.; Melcher, F. Preliminary Chemical and Mineralogical Characterization of Tailings from Base Metal Sulfide Deposits in Serbia and North Macedonia. *Geol. Croat.* **2022**, *75*, 291–302. [[CrossRef](#)]
70. Douay, F.; Pruvot, C.; Roussel, H.; Ciesielski, H.; Fourrier, H.; Proix, N.; Waterlot, C. Contamination of Urban Soils in an Area of Northern France Polluted by Dust Emissions of Two Smelters. *Water Air Soil Pollut.* **2008**, *188*, 247–260. [[CrossRef](#)]
71. Dragović, S.; Mihailović, N.; Gajić, B. Heavy Metals in Soils: Distribution, Relationship with Soil Characteristics and Radionuclides and Multivariate Assessment of Contamination Sources. *Chemosphere* **2008**, *72*, 491–495. [[CrossRef](#)]
72. Liao, G.; Liao, D.; Li, Q. Heavy Metals Contamination Characteristics in Soil of Different Mining Activity Zones. *Trans. Nonferrous Met. Soc. China* **2008**, *18*, 207–211. [[CrossRef](#)]
73. Jiménez-Cárceles, F.J.; Álvarez-Rogel, J.; Conesa Alcaraz, H.M. Trace Element Concentrations in Saltmarsh Soils Strongly Affected by Wastes from Metal Sulphide Mining Areas. *Water Air Soil Pollut.* **2008**, *188*, 283–295. [[CrossRef](#)]
74. Kasassi, A.; Rakimbei, P.; Karagiannidis, A.; Zabaniotou, A.; Tsiouvaras, K.; Nastis, A.; Tzafeiropoulou, K. Soil Contamination by Heavy Metals: Measurements from a Closed Unlined Landfill. *Bioresour. Technol.* **2008**, *99*, 8578–8584. [[CrossRef](#)]
75. Fernández-Caliani, J.C.; Barba-Brioso, C.; González, I.; Galán, E. Heavy Metal Pollution in Soils Around the Abandoned Mine Sites of the Iberian Pyrite Belt (Southwest Spain). *Water Air Soil Pollut.* **2009**, *200*, 211–226. [[CrossRef](#)]
76. Chrastný, V.; Vaněk, A.; Teper, L.; Cabala, J.; Procházka, J.; Pechar, L.; Drahot, P.; Penížek, V.; Komárek, M.; Novák, M. Geochemical Position of Pb, Zn and Cd in Soils near the Olkusz Mine/Smelter, South Poland: Effects of Land Use, Type of Contamination and Distance from Pollution Source. *Environ. Monit. Assess.* **2012**, *184*, 2517–2536. [[CrossRef](#)]
77. Zawadzki, J.; Fabijańczyk, P. Geostatistical Evaluation of Lead and Zinc Concentration in Soils of an Old Mining Area with Complex Land Management. *Int. J. Environ. Sci. Technol.* **2013**, *10*, 729–742. [[CrossRef](#)]
78. Jeftimova, M.; Stafilov, T.; Šajn, R.; Bačeva Andonovska, K.; Karadjova, I. Spatial Distribution of Chemical Elements in Soil Samples in the Veles Region, Republic of Macedonia. *Geol. Maced.* **2016**, *30*, 103–114.
79. Kalavrouziotis, I.K.; Koukoulakis, P.H. Soil Pollution under the Effect of Treated Municipal Wastewater. *Environ. Monit. Assess.* **2012**, *184*, 6297–6305. [[CrossRef](#)]
80. Khalil, A.; Hanich, L.; Bannari, A.; Zouhri, L.; Pourret, O.; Hakkou, R. Assessment of Soil Contamination around an Abandoned Mine in a Semi-Arid Environment Using Geochemistry and Geostatistics: Pre-Work of Geochemical Process Modeling with Numerical Models. *J. Geochem. Explor.* **2013**, *125*, 117–129. [[CrossRef](#)]
81. Cabala, J.; Zogala, B.; Dubiel, R. Geochemical and Geophysical Study of Historical Zn-Pb Ore Processing Waste Dump Areas (Southern Poland). *Pol. J. Environ. Study* **2008**, *17*, 693–700.
82. Rodríguez, L.; Ruiz, E.; Alonso-Azcárate, J.; Rincón, J. Heavy Metal Distribution and Chemical Speciation in Tailings and Soils around a Pb–Zn Mine in Spain. *J. Environ. Manag.* **2009**, *90*, 1106–1116. [[CrossRef](#)] [[PubMed](#)]
83. Nikolic, D.; Milosevic, N.; Zivkovic, Z.; Mihajlovic, I.; Kovacevic, R.; Petrovic, N. Multi-Criteria Analysis of Soil Pollution by Heavy Metals in the Vicinity of the Copper Smelting Plant in Bor (Serbia). *J. Serbian Chem. Soc.* **2011**, *76*, 625–641. [[CrossRef](#)]
84. Everhart, J.L.; McNear, D.; Peltier, E.; van der Lelie, D.; Chaney, R.L.; Sparks, D.L. Assessing Nickel Bioavailability in Smelter-Contaminated Soils. *Sci. Total Environ.* **2006**, *367*, 732–744. [[CrossRef](#)]
85. Stafilov, T.; Šajn, R.; Boev, B.; Cvetković, J.; Mukaetov, D.; Andreevski, M.; Lepitkova, S. Distribution of Some Elements in Surface Soil over the Kavadarci Region, Republic of Macedonia. *Environ. Earth Sci.* **2010**, *61*, 1515–1530. [[CrossRef](#)]
86. Wilson, S.C.; Lockwood, P.V.; Ashley, P.M.; Tighe, M. The Chemistry and Behaviour of Antimony in the Soil Environment with Comparisons to Arsenic: A Critical Review. *Environ. Pollut.* **2010**, *158*, 1169–1181. [[CrossRef](#)]
87. Bačeva, K.; Stafilov, T.; Šajn, R.; Tănăselia, C.; Makreski, P. Distribution of Chemical Elements in Soils and Stream Sediments in the Area of Abandoned Sb–As–Tl Allchar Mine, Republic of Macedonia. *Environ. Res.* **2014**, *133*, 77–89. [[CrossRef](#)]
88. Bačvarovski, D.; Šajn, R.; Stafilov, T. Distribution of Chemical Elements in Sediments and Alluvium Soils from the Pčinja River Basin, North Macedonia. *Geol. Maced.* **2021**, *35*, 95–113. [[CrossRef](#)]
89. Okedeyi, O.O.; Dube, S.; Awofolu, O.R.; Nindi, M.M. Assessing the Enrichment of Heavy Metals in Surface Soil and Plant (*Digitaria Eriantha*) around Coal-Fired Power Plants in South Africa. *Environ. Sci. Pollut. Res.* **2014**, *21*, 4686–4696. [[CrossRef](#)]
90. Harmens, H.; Ilyin, I.; Mills, G.; Aboal, J.R.; Alber, R.; Blum, O.; Coşkun, M.; De Temmerman, L.; Fernández, J.Á.; Figueira, R.; et al. Country-Specific Correlations across Europe between Modelled Atmospheric Cadmium and Lead Deposition and Concentrations in Mosses. *Environ. Pollut.* **2012**, *166*, 1–9. [[CrossRef](#)]
91. Harmens, H.; Norris, D.A.; Sharps, K.; Mills, G.; Alber, R.; Aleksiyenak, Y.; Blum, O.; Cucu-Man, S.-M.; Dam, M.; De Temmerman, L.; et al. Heavy Metal and Nitrogen Concentrations in Mosses Are Declining across Europe Whilst Some “Hotspots” Remain in 2010. *Environ. Pollut.* **2015**, *200*, 93–104. [[CrossRef](#)]
92. Stafilov, T.; Šajn, R.; Barandovski, L.; Andonovska, K.B.; Malinovska, S. Moss Biomonitoring of Atmospheric Deposition Study of Minor and Trace Elements in Macedonia. *Air Qual. Atmos. Health* **2018**, *11*, 137–152. [[CrossRef](#)]
93. Lazarevski, A. *Climate in Macedonia*; Kultura: Skopje, North Macedonia, 1993.
94. Pendžerkovski, J.; Hadži-Mitrova, S. *Geological Map of SR Macedonia 1:200,000 (Map and Interpreter)*; Professional Fund of the Geological Survey of Macedonia: Skopje, North Macedonia, 1977.
95. Dumurdzanov, N.; Serafimovski, T.; Burchfield, B.C. *Evolution of the Neogene-Pleistocene Basins of Macedonia*; Geological Society of America Digital map and Chart Series 1; Geological Society of America: Boulder, CO, USA, 2004; Volume 1, pp. 1–20.
96. Dumurdzanov, N.; Serafimovski, T.; Burchfiel, B.C. Cenozoic Tectonics of Macedonia and Its Relation to the South Balkan Extensional Regime. *Geosphere* **2005**, *1*, 1–20. [[CrossRef](#)]

97. Arsovski, M. *Tectonics of Macedonia*; Faculty of Mining and Geology: Štip, North Macedonia, 1997.
98. Filipovski, G. Soil Maps of the Republic of Macedonia. *Contrib. Sect. Nat. Math. Biotech. Sci.* **2017**, *37*, 55–68. [[CrossRef](#)]
99. Aksoy, E.; Arsov, S.; Mincev, I.; Fang, C. *Agro-Ecological Atlas of the Republic of North Macedonia*; FAO: Rome, Italy, 2020; ISBN 978-92-5-132122-5.
100. Salminen, R.; Tarvainen, T.; Demetriades, A.; Duris, M.; Fordyce, F.M.; Gregorauskiene, V.; Kahelin, H.; Kivisilla, J.; Klaver, G.; Klein, H.; et al. *FOREGS Geochemical Mapping Field Manual Guide*; Geological Survey of Finland: Espoo, Finland, 1998.
101. Stafilov, T.; Šajn, R. Spatial Distribution and Pollution Assessment of Heavy Metals in Soil from the Republic of North Macedonia. *J. Environ. Sci. Health Part A* **2019**, *54*, 1457–1474. [[CrossRef](#)] [[PubMed](#)]
102. Stafilov, T.; Balabanova, B.; Šajn, R. *Geochemical Atlas of the Region of the Bregalnica River Basin*; Faculty of Natural Sciences and Mathematics, Ss. Cyril and Methodius University in Skopje: Skopje, North Macedonia, 2014; ISBN 978-9989-668-96-8.
103. Stafilov, T.; Šajn, R.; Božinova, D. Spatial Distribution of Chemical Elements in Soils from the Southeastern Part of North Macedonia (Gevgelija, Valandovo, Bogdanci and Dojran Municipalities). *Geol. Maced.* **2023**, *37*, 135–152. [[CrossRef](#)]
104. Stafilov, T.; Šajn, R.; Balabanova, B.; Angelovska, S. Lithogenic and Anthropogenic Distribution of Chemical Elements in Soils from Pb-Zn Mining Area. Case Study: Kriva River Basin, North Macedonia. *Chem. Ecol.* **2023**, *39*, 585–610. [[CrossRef](#)]
105. Stafilov, T.; Šajn, R.; Veličkovski-Simonović, S.; Tănăselia, C. Multivariate Statistical Methods in Determining the Spatial Distribution of Chemical Elements in Soils (Kumanovo Region, North Macedonia). *Geol. Maced.* **2023**, *37*, 15–36. [[CrossRef](#)]
106. Stafilov, T.; Šajn, R.; Damčevska, D.; Tănăselia, C. Use of Multivariate Statistical Methods to Determine Spatial Distributions of Chemical Elements in Soils (Mariovo Region, North Macedonia). *Geol. Balc.* **2021**, *50*, 37–53. [[CrossRef](#)]
107. Stafilov, T.; Šajn, R.; Mickovska, I. Distribution of Chemical Elements in Soil from Crn Drim River Basin, Republic of Macedonia. *Contrib. Sect. Nat. Math. Biotech. Sci.* **2019**, *40*, 73. [[CrossRef](#)]
108. Stafilov, T.; Šajn, R.; Puteska, A.; Dimovska Gonovska, B. *Geochemical Atlas of Pelagonia*; Faculty of Natural Sciences and Mathematics, Ss. Cyril and Methodius University in Skopje: Skopje, North Macedonia, 2015; ISBN 978-9989-668-96-8.
109. Čulumoska-Gjorgjievska, A.; Stafilov, T.; Šajn, R. Spatial Distribution of Chemical Elements in Soil in the Polog Region, Republic of Macedonia. *Geol. Maced.* **2015**, *29*, 155–166.
110. Stafilov, T.; Šajn, R.; Dimkova, B. Multivariate Statistical Methods in Determining the Spatial Distribution of Chemical Elements in Soil from the Prespa Region, North Macedonia. *Environ. Eng. Manag. J.* **2022**, *21*, 1773–1787. [[CrossRef](#)]
111. Stafilov, T.; Šajn, R.; Petrovska, K. Multivariate Statistical Methods in Determining the Spatial Distribution of Chemical Elements in Soil from the Mavrovo-Rostuše Region, North Macedonia. *Maced. J. Ecol. Environ.* **2023**, *25*, 75–91. [[CrossRef](#)]
112. Čančalova, S.; Stafilov, T.; Šajn, R.; Alijagić, J. Spatial Distribution of Chemical Elements in Soil from the Strumica Region, Republic of Macedonia. *Geol. Maced.* **2017**, *31*, 117–130.
113. Stafilov, T.; Šajn, R.; Očevska, M.; Tănăselia, C. Application of Multivariate Statistical Methods in Determining Spatial Distribution of Chemical Elements in Soil (Poreče Region, North Macedonia). *Geol. Maced.* **2022**, *36*, 37–54. [[CrossRef](#)]
114. Stafilov, T.; Šajn, R.; Boev, B.; Cvetković, J.; Mukaetov, D.; Andreevski, M. *Geochemical Atlas of Kavadarci and the Environs*; Faculty of Natural Sciences and Mathematics, Ss. Cyril and Methodius University in Skopje: Skopje, North Macedonia, 2008; ISBN 978-9989-668-74-6.
115. Stafilov, T.; Šajn, R.; Sulejmani, F.; Bačeva Andonovska, K. *Geochemical Atlas of Kičevo and the Environs*; Faculty of Natural Sciences and Mathematics, Ss. Cyril and Methodius University in Skopje: Skopje, North Macedonia, 2011; ISBN 978-9989-668-89-0.
116. Mihajlov, M.; Barandovski, L.; Šajn, R.; Stafilov, T. Spatial Distribution of Heavy Metals in Soils in the Republic of Macedonia. *Geol. Maced.* **2016**, *30*, 41–54.
117. Stafilov, T.; Šajn, R. *Geochemical Atlas of Skopje*; Faculty of Natural Sciences and Mathematics, Ss. Cyril and Methodius University in Skopje: Skopje, North Macedonia, 2017; ISBN 978-608-4762-08-9.
118. Stafilov, T.; Šajn, R.; Ahmeti, L. Geochemical Characteristics of Soil of the City of Skopje, Republic of Macedonia. *J. Environ. Sci. Health Part A* **2019**, *54*, 972–987. [[CrossRef](#)] [[PubMed](#)]
119. Jordanoska, B.; Stafilov, T.; Pelivanoska, V. Accumulation and Availability of Trace Elements from Soil into Oriental Tobacco Grown in Macedonia. *Environ. Eng. Manag. J.* **2018**, *17*, 1491–1500. [[CrossRef](#)]
120. Stafilov, T.; Šajn, R.; Pančevski, Z.; Boev, B.; Frontasyeva, M.; Strelkova, L. *Geochemical Atlas of Veles and the Environs*; Faculty of Natural Sciences and Mathematics, Ss. Cyril and Methodius University in Skopje: Skopje, North Macedonia, 2008; ISBN 978-9989-668-73-9.
121. *ISO 14869-1:2001*; Soil Quality—Dissolution for the Determination of Total Element Content—Part 1: Dissolution with Hydrofluoric and Perchloric Acids. International Organization for Standardization: Geneva, Switzerland, 2001.
122. Balabanova, B.; Stafilov, T.; Bačeva, K.; Šajn, R. Biomonitoring of Atmospheric Pollution with Heavy Metals in the Copper Mine Vicinity Located near Radoviš, Republic of Macedonia. *J. Environ. Sci. Health Part A Toxic/Hazard. Subst. Environ. Eng.* **2010**, *45*, 1504–1518. [[CrossRef](#)] [[PubMed](#)]
123. Frontasyeva, M.V.; Steinnes, E. Epithermal Neutron Activation Analysis of Mosses Used to Monitor Heavy Metal Deposition around an Iron Smelter Complex. *Analyst* **1995**, *120*, 1437. [[CrossRef](#)]
124. Bureau Veritas North America (Former ACME)—Mining Laboratory Services—Geochemistry. Available online: <https://www.bvna.com/other-markets/mining-laboratory-services/geochemistry> (accessed on 21 November 2023).
125. TIBCO Software Inc. *Statistica*; Ver. 14; TIBCO Software Inc.: Palo Alto, CA, USA, 2020.

126. QGIS Development Team. *QGIS (Geographic Information System—Open Source)*; Ver. 3.28; QGIS Development Team: Gossau, Switzerland, 2022.
127. Golden Software LCC. *Surfer (Surface Mapping System)*; Ver. 25; Golden Software LCC: Golden, CO, USA, 2023.
128. Box, G.E.P.; Cox, D.R. An Analysis of Transformations. *J. R. Stat. Soc. Ser. B (Methodol.)* **1964**, *26*, 211–252. [[CrossRef](#)]
129. Reimann, C.; Filzmoser, P.; Garrett, R.G. Factor Analysis Applied to Regional Geochemical Data: Problems and Possibilities. *Appl. Geochem.* **2002**, *17*, 185–206. [[CrossRef](#)]
130. Bighash, P.; Murgulet, D. Application of Factor Analysis and Electrical Resistivity to Understand Groundwater Contributions to Coastal Embayments in Semi-Arid and Hypersaline Coastal Settings. *Sci. Total Environ.* **2015**, *532*, 688–701. [[CrossRef](#)]
131. Alkarkhi, A.F.M.; Alqaraghuli, W.A.A. Chapter 1—Multivariate Data. In *Applied Statistics for Environmental Science with R*; Alkarkhi, A.F.M., Alqaraghuli, W.A.A., Eds.; Elsevier: Amsterdam, The Netherlands, 2020; pp. 1–10. ISBN 978-0-12-818622-0.
132. Templ, M.; Filzmoser, P.; Reimann, C. Cluster Analysis Applied to Regional Geochemical Data: Problems and Possibilities. *Appl. Geochem.* **2008**, *23*, 2198–2213. [[CrossRef](#)]
133. Krishnan, V.S.; Firoz, C.M. Assessment of Regional Environmental Quality Using Cluster Analysis. *Environ. Dev.* **2023**, *45*, 100832. [[CrossRef](#)]
134. Reimann, C.; Filzmoser, P. Normal and Lognormal Data Distribution in Geochemistry: Death of a Myth. Consequences for the Statistical Treatment of Geochemical and Environmental Data. *Environ. Geol.* **2000**, *39*, 1001–1014. [[CrossRef](#)]
135. Paumelle, M.; Occelli, F.; Wakim, L.M.; Brousmiche, D.; Bouhadj, L.; Ternynck, C.; Lanier, C.; Cuny, D.; Deram, A. Description of the Multi-Dimensional Environment at the Territorial Scale: A Holistic Framework Using Cluster Analysis and Open Data in France. *Ecol. Indic.* **2023**, *154*, 110562. [[CrossRef](#)]
136. Yu, T.-T.; Chen, C.-Y.; Wu, T.-H.; Chang, Y.-C. Application of High-Dimensional Uniform Manifold Approximation and Projection (UMAP) to Cluster Existing Landfills on the Basis of Geographical and Environmental Features. *Sci. Total Environ.* **2023**, *904*, 167013. [[CrossRef](#)] [[PubMed](#)]
137. Zhao, W.; Ma, J.; Liu, Q.; Song, J.; Tysklind, M.; Liu, C.; Wang, D.; Qu, Y.; Wu, Y.; Wu, F. Comparison and Application of SOFM, Fuzzy c-Means and k-Means Clustering Algorithms for Natural Soil Environment Regionalization in China. *Environ. Res.* **2023**, *216*, 114519. [[CrossRef](#)]
138. Spearman, C. “General Intelligence”, Objectively Determined and Measured. *Am. J. Psychol.* **1904**, *15*, 201–292. [[CrossRef](#)]
139. Gündoğdu, Y.; Karabağlı, P.; Alptekin, H.; Şahin, M.; Kılıç, H.Ş. Comparison of Performances of Principal Component Analysis (PCA) and Factor Analysis (FA) Methods on the Identification of Cancerous and Healthy Colon Tissues. *Int. J. Mass Spectrom.* **2019**, *445*, 116204. [[CrossRef](#)]
140. Filzmoser, P.; Hron, K.; Reimann, C. Univariate Statistical Analysis of Environmental (Compositional) Data: Problems and Possibilities. *Sci. Total Environ.* **2009**, *407*, 6100–6108. [[CrossRef](#)] [[PubMed](#)]
141. Kochubovski, M. Blood-Lead Levels in School Children as an Indicator of Lead Pollution. *J. Environ. Prot. Ecol.* **2010**, *11*, 1256–1263.
142. Pančevski, Z.; Stafilov, T.; Bačeva, K. Distribution of Heavy Metals in Some Vegetables Grown in the Vicinity of Lead and Zinc Smelter Plant. *Contrib. Sect. Nat. Math. Biotech. Sci.* **2017**, *35*, 25–36. [[CrossRef](#)]
143. Šajn, R.; Pančevski, Z.; Frontasyeva, M.; Stafilov, T. Levels and Distribution of Chemical Elements in House Dust from the Area of an Abandoned Pb-Zn Smelter in North Macedonia. *J. Environ. Sci. Health Part A* **2023**, *58*, 1–12. [[CrossRef](#)]
144. Stafilov, T.; Balabanova, B.; Sajin, R.; Bačeva Andonovska, K.; Boev, B. *Geochemical Atlas of Radoviš and the Environs and the Distribution of Heavy Metals in the Air*; Faculty of Natural Sciences and Mathematics, Ss. Cyril and Methodius University in Skopje: Skopje, North Macedonia, 2010; ISBN 978-9989-668-86-9.
145. EarthScience Information Systems (ESDAT). *Dutch Target and Intervention Values*; Environmental Database Management Software (ESDAT): Byron Bay, Australia, 2000; p. 51.
146. Rieck, B. Allchar, Macedonia. *Miner. Rec.* **1993**, *24*, 437–448.
147. Jovanovski, G.; Boev, B.; Makreski, P. *Minerals from the Republic of Macedonia: With an Introduction to Mineralogy*; Macedonian Academy of Sciences and Arts: Skopje, North Macedonia, 2011.
148. Volkov, A.V.; Serafimovski, T.; Kochneva, N.T.; Tomson, I.N.; Tasev, G. The Alshar Epithermal Au-As-Sb-Tl Deposit, Southern Macedonia. *Geol. Ore Depos.* **2006**, *48*, 175–192. [[CrossRef](#)]
149. Alijagić, J.; Šajn, R. Application and Improvement of Soil Spatial Distribution Mapping Using Advanced Modeling Techniques. *Geol. Croat.* **2020**, *73*, 69–84. [[CrossRef](#)]
150. Alijagić, J.; Šajn, R. Predicting the Spatial Distributions of Elements in Former Military Operation Area Using Linear and Nonlinear Methods across the Stavnja Valley, Bosnia and Herzegovina. *Minerals* **2020**, *10*, 120. [[CrossRef](#)]
151. Azizi, K.; Ayoubi, S.; Nabiollahi, K.; Garosi, Y.; Gislum, R. Predicting Heavy Metal Contents by Applying Machine Learning Approaches and Environmental Covariates in West of Iran. *J. Geochem. Explor.* **2022**, *233*, 106921. [[CrossRef](#)]

152. Shi, T.; Hu, X.; Guo, L.; Su, F.; Tu, W.; Hu, Z.; Liu, H.; Yang, C.; Wang, J.; Zhang, J.; et al. Digital Mapping of Zinc in Urban Topsoil Using Multisource Geospatial Data and Random Forest. *Sci. Total Environ.* **2021**, *792*, 148455. [[CrossRef](#)]
153. Gardner, M.W.; Dorling, S.R. Artificial Neural Networks (the Multilayer Perceptron)—A Review of Applications in the Atmospheric Sciences. *Atmos. Environ.* **1998**, *32*, 2627–2636. [[CrossRef](#)]

Disclaimer/Publisher’s Note: The statements, opinions and data contained in all publications are solely those of the individual author(s) and contributor(s) and not of MDPI and/or the editor(s). MDPI and/or the editor(s) disclaim responsibility for any injury to people or property resulting from any ideas, methods, instructions or products referred to in the content.