

Supplement material

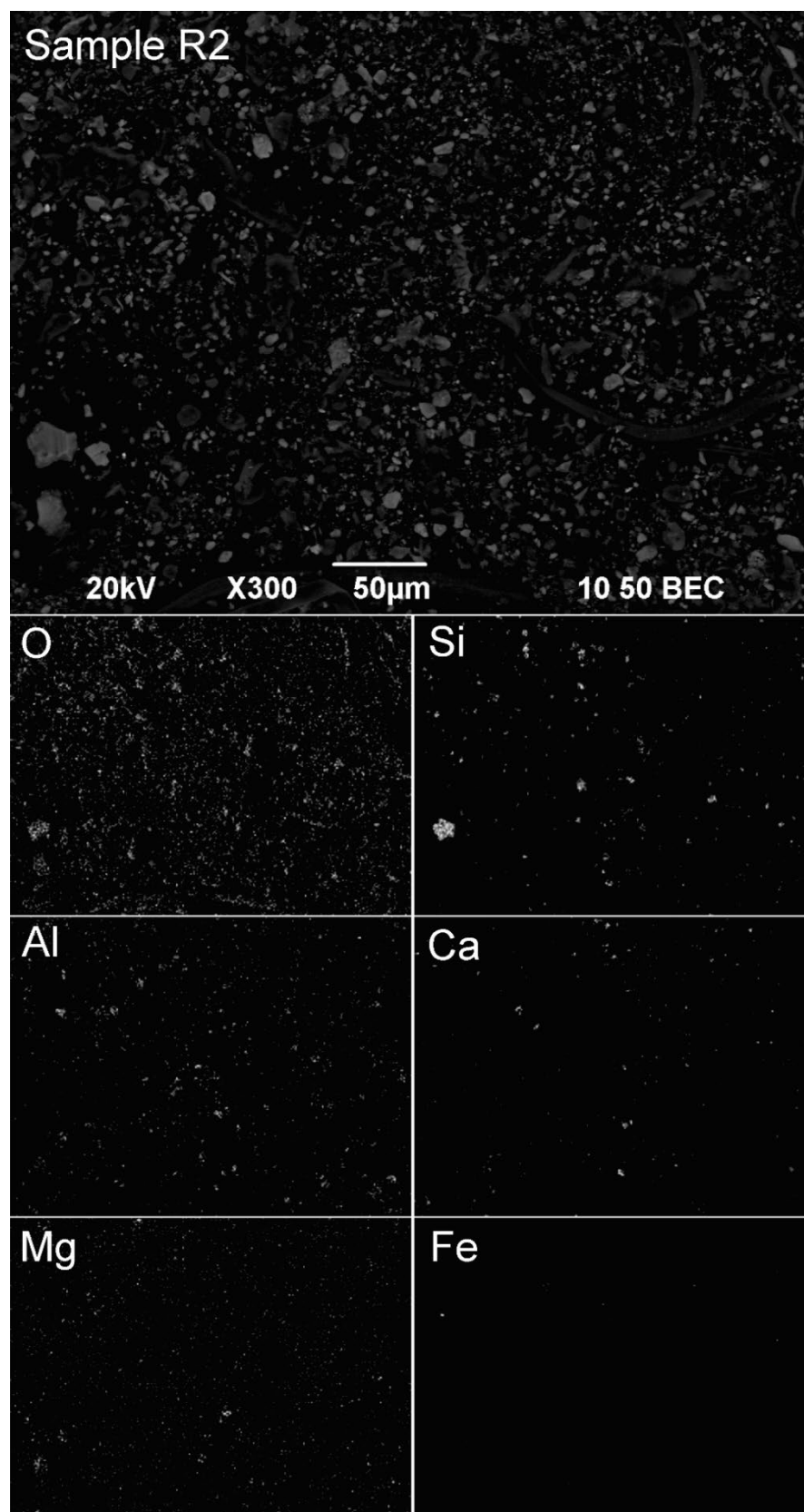


Figure S1. SEM field of view image with EDS elemental mapping results using 300x magnification of sample R2.

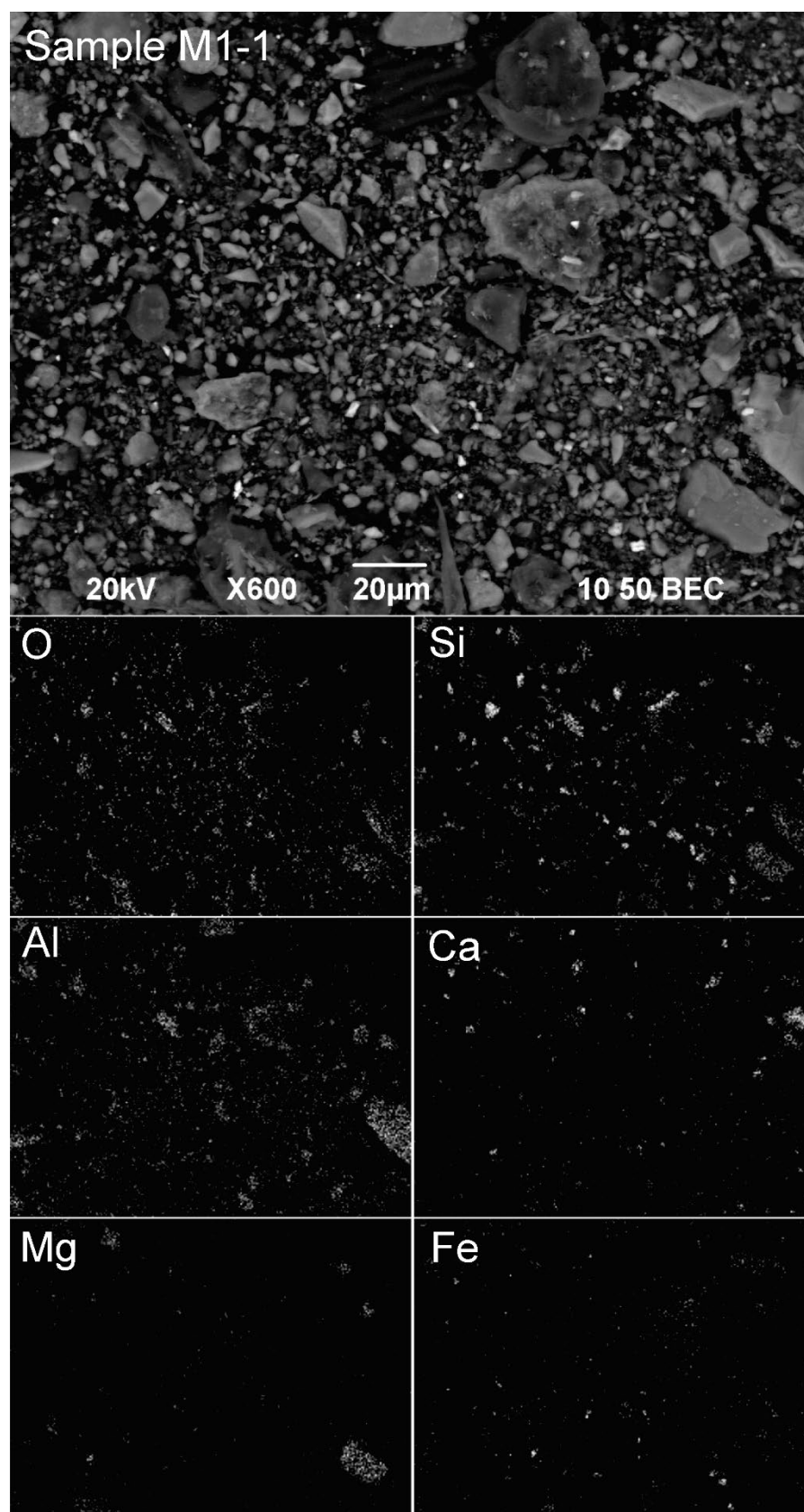


Figure S2. SEM field of view image with EDS elemental mapping results using 600x magnification of sample M1-1.

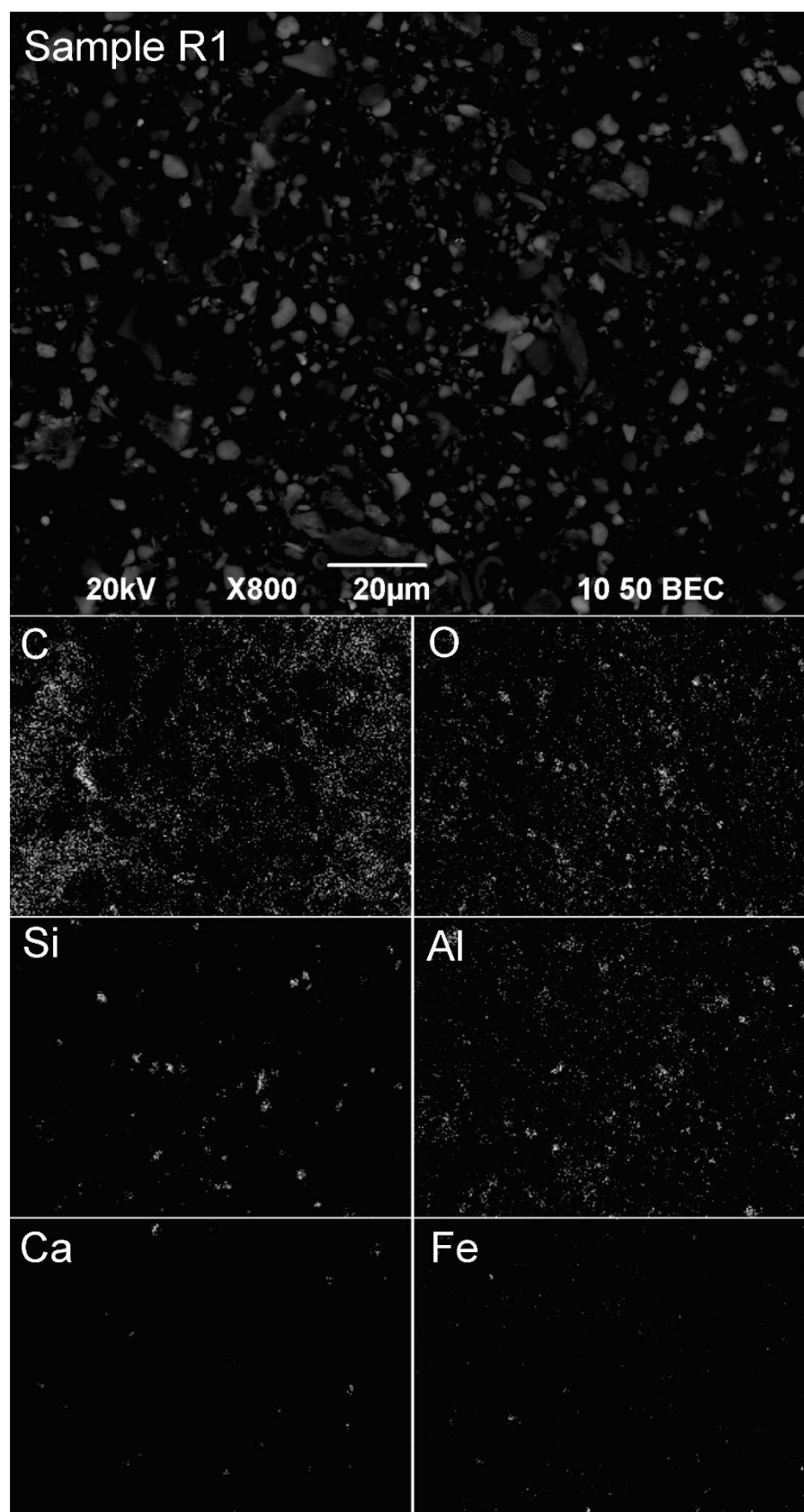


Figure S3. SEM field of view image with EDS elemental mapping results using 800x magnification of sample R1.

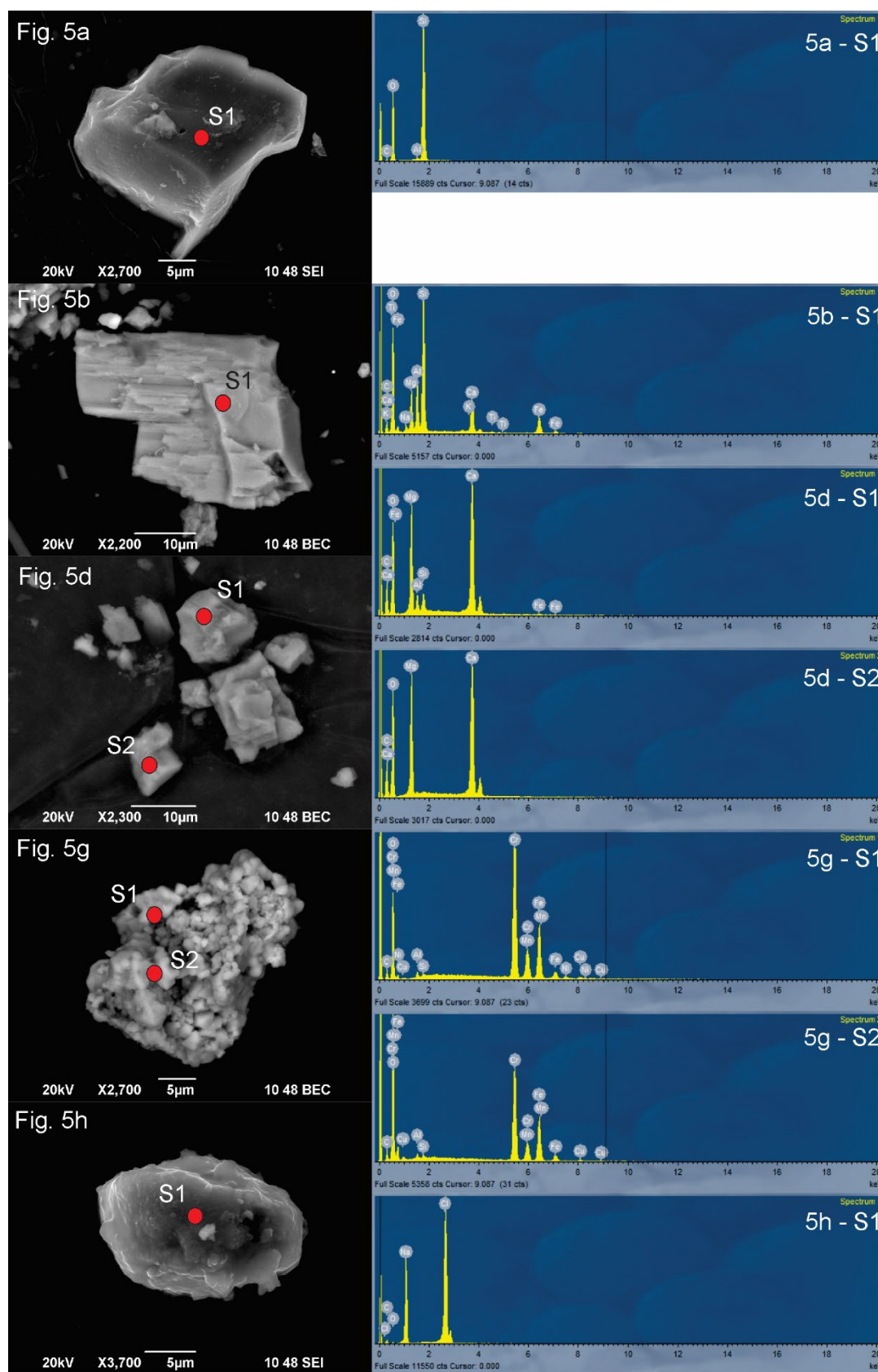


Figure S4. EDS spectra of selected images in Figure 5 (particles from passive deposition).

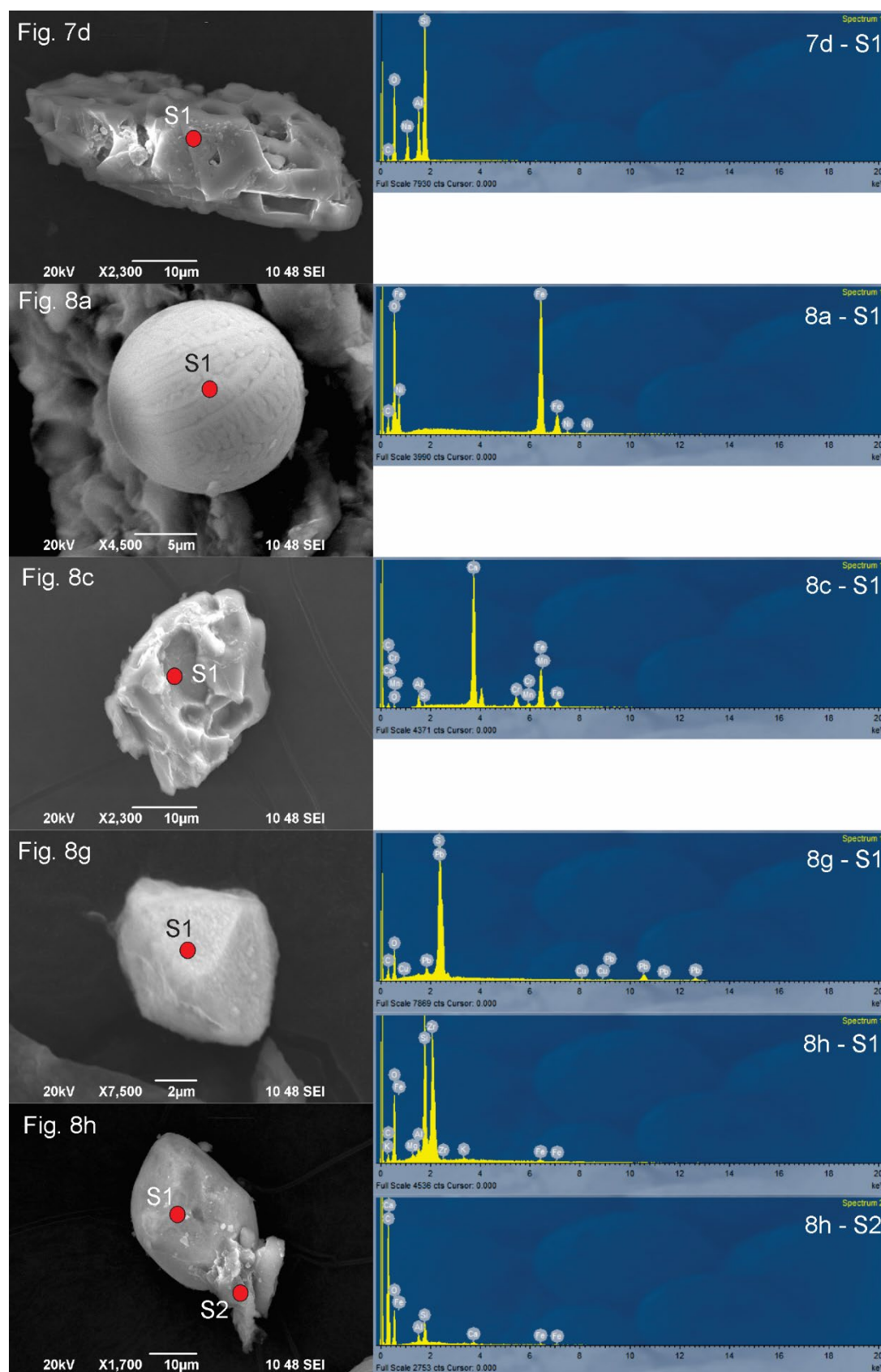


Figure S5. EDS spectra of selected images in Figures 7 and 8 (particles in snowmelt water).