

Morphologic variability of the *Acer campestre* L. populations in Bosnia and Herzegovina

Stjepan Kvesić¹, Mirzeta Memišević Hodžić²,
Matijaž Čater³, Dalibor Ballian^{2,3}

1 Šumskogospodarsko društvo "Šume Središnje Bosne" d.o.o., 770 Slavne brdske brigade bb., 70220 Donji Vakuf, Bosnia and Herzegovina

2 University of Sarajevo, Faculty of forestry, Zagrebačka 20, 71000 Sarajevo, Bosnia and Herzegovina

3 Slovenian Forestry Institute, Večna pot 2, 1000 Ljubljana, Slovenia

Corresponding author: Dalibor Ballian (balliandalibor9@gmail.com)

Academic editor: R. Yakovlev | Received 13 August 2021 | Accepted 2 October 2021 | Published 15 November 2021

<http://zoobank.org/612DBFA5-FB54-43D0-B38E-E4676F315D41>

Citation: Kvesić S, Hodžić MM, Čater M, Ballian D (2021) Morphologic variability of the *Acer campestre* L. populations in Bosnia and Herzegovina. Acta Biologica Sibirica 7: 327–343. <https://doi.org/10.3897/abs.7.e73001>

Abstract

Morphologic variability from 25 populations of *Acer campestre* L. in Bosnia and Herzegovina was analyzed. Morphometric structure of variability and between-population variability was performed based on 10 fruit-parameter characteristics and 19 leaf-parameter characteristics using multivariate statistical analysis. Results confirmed the separation of three submediterranean populations as a group in relation to other tested populations, from which the Banja Luka population is different. Measured leaf parameters were confirmed as a predominant carrier of the morphologic separation between populations. In other *Acer* species populations within *A. monspessulanum* and *A. intermedium* species are separated mainly by fruit and much less by leaf parameters. The southernmost submediterranean populations from Trebinje, Ljubuški, and Mostar regions have smaller leaf areas, which consequently places them within the same morphologic group; their variability is in tight connection with eco-geographical factors, where the ecological distance is a much better predictor of morphological variability compared to geographical distance. The air temperature had the biggest influence on morphological variability regarding the highest in-between correlation. Achieved results may serve for the continuation of the research in other areas of *Acer campestre* to determine the interactive effect of ecological, geographical, climatic, and migrational factors on their morphologic population plasticity.

Keywords

Differentiation, field maple, fruit, leaf, morphologic variability

Introduction

Acer campestre is a broadleaf tree species, which reaches up to 15m, in extreme conditions 25 m in height and with diameter at breast height (DBH) of 60 cm, sometimes even 70 cm (Chybicki et al. 2014). Nagy and Ducci (2004) quote heights up to 30 m, with diameter at breast height 90 cm at the age between 250 and 350 years. Šilić (1990) defines it as a bigger shrub on extreme growing sites (Kvesić et al. 2019, 2020a, 2020b).

Its ecological amplitude is rather wide (Nagy i Ducci 2004), as it may be found in areas with warmer climate; it is resistant to winter conditions, while in continental area it tolerates temperature extremes (Nagy and Ducci 2004) as well as late spring frosts at the beginning of growing period, which influence its distribution (Savill 2013; Chybicki et al. 2014). Even as the most abundant tree species on mesophyll sites, especially in broadleaf oak forests, it reaches up to 1600 m above sea level (Praciak et al. 2013). Species isn't extremely water demanding and may not be found on location and sites with standing water with the lack of oxygen. It favours carbon substrates and also heavy clay soils; it persists in soil condition between pH 6-8. Species is extremely shade tolerant during first 10 years, while light demands progressively increase in time, especially after mast years (Nagy and Ducci 2004). It may tolerate branch removal, which makes it very suitable for the creation of green/live fences (Jones 1945).

Chybicki et al. (2014) quote that species does not create pure stands within its natural abundance/ distribution area, but rather represents the subdominant tree species within several forest stands of Europe. In the continental part it may be found within mixed broadleaf stands especially with species from genus *Quercus*, *Tilia*, *Ulmus* and *Castanea*, while it is very rare within conifer stands (Jones 1945; FAO 2001). According to Šilić (1990), it grows in broadleaf, mixed oak stands, particularly with *Quercus robur* and *Fraxinus angustifolia*, as well as in forests of *Quercus petraea* and *Carpinus betulus*, *Quercus cerris* and *Quercus frainetto*. It grows best on deep and mineral rich soils.

Its very good adaptation ability make it one of the most characterising tree species of mixed forest stands in central and eastern Europe. In arid areas it is the subdominant tree species with oak, while in humid areas and in higher elevations it becomes overdominated by beech and hornbeam (Nagy and Ducci 2004).

A. campestre is naturally distributed along all Europe with exception of its northern parts. Its commercial importance is small, so it is not subject to different silvicultural treatments. Therefore it may serve as a valuable model species in research of the population sensitivity to site fragmentation, as it well covers various levels of population fragmentation (Chybicki i sur. 2014; Kvesić et al. 2019, 2020a, 2020b).

Fact that Drenkovski (1979) in his observations of Balkans characterised various form of *Acer campestre* as six different species (*A. campestre* L., *A. marsicum* Guss., *A. austriacum* Tratt., *A. pseudomarsicum* (Pax) Drenk., *A. varbossianum* (Malý) Sim. and *A. pannonicum* Drenk.), indicate its wide eco-morphological population amplitude and are usually characterised under one same name (Jovanović 2000).

From all abovementioned reasons, study of this species makes it unique for the definition of various ecological, geographical, climatic factors as well as for the definition of its natural abundance, fragmentation and morphologic variability of forest populations. Provided results may also serve for the preservation of the species and its diversity as well as for its reproductive material monitoring.

With comparison of various populations within Bosnia and Herzegovina region we wanted to define influence of fruit (1) and leaf parameters (2) contribution to morphologic variability of the species and to define similarity of tested populations based on morphologic parameters (3).

Material and methods

Material for the analysis was collected from various regions and sites of Bosnia and Herzegovina, to include all ecological and geographic characteristics of the studied species (Fig. 1, Table 1).

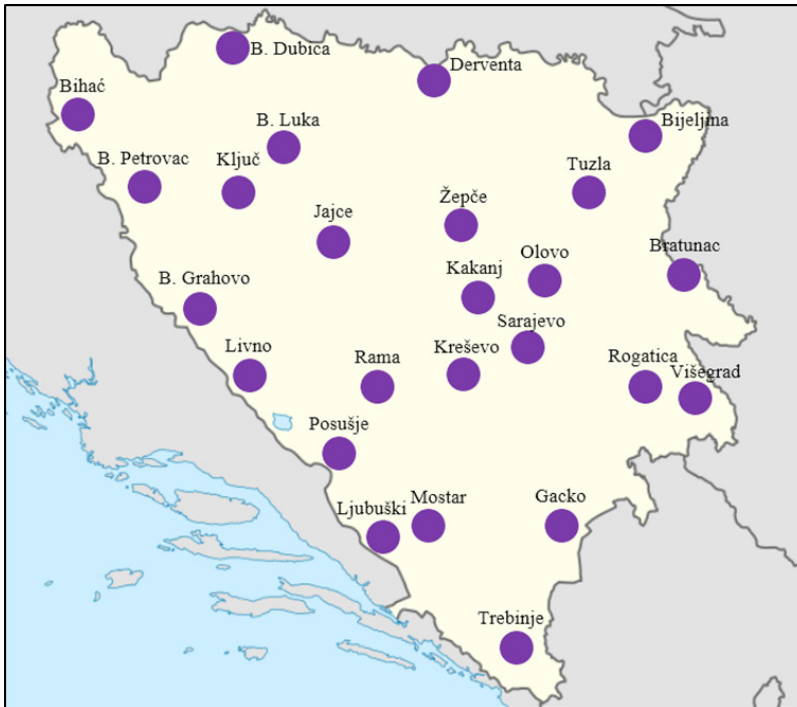


Figure 1. Position of studied populations.

Table 1. Elementar data about populations

No	Population	Locality	Population Mark	Latitude	Longitude	Altitude (m)
1	Posušje	Posuško polje	P	43° 27' 10"	17° 22' 22"	710
2	Rama	Rumboci	Ra	43° 49' 37"	17° 30' 28"	625
3	Kreševo	Polje	Kr	43° 53' 01"	18° 04' 22"	570
4	Žepče	Orahovica	Z	44° 25' 27"	18° 03' 01"	225
5	Jajce	Podmilačje	J	44° 22' 33"	17° 17' 36"	345
6	Ključ	Čađavica	Klj	44° 29' 08"	16° 53' 34"	685
7	B. Luka	Trapisti	BL	44° 48' 25"	17° 13' 36"	185
8	B. Grahovo	B. Grahovo	BG	44° 11' 12"	16° 22' 16"	845
9	Livno	Mali Kablčići	L	43° 51' 19"	16° 56' 31"	750
10	B. Petrovac	Vođenica	BP	44° 37' 37"	16° 14' 57"	620
11	Bihać	Spahići	Bih	44° 51' 29"	15° 53' 17"	315
12	B. Dubica	Donji jelovac	BD	45° 04' 44"	16° 41' 25"	170
13	Ljubuški	Studenci	Lj	43° 10' 11"	17° 37' 00"	50
14	Mostar	Pijesci	M	43° 11' 40"	17° 49' 00"	225
15	Višegrad	Dobrun	V	43° 45' 17"	19° 23' 17"	375
16	Rogatica	Kukavice	Ro	43° 46' 55"	19° 00' 28"	515
17	Bijeljina	Dragaljevac srednji	Bij	44° 49' 01"	19° 01' 59"	95
18	Gacko	Vrba	G	43° 13' 28"	18° 34' 44"	1115
19	Trebinje	Dobromani	Tr	42° 47' 26"	18° 09' 25"	240
20	Derвента	Lužani	D	45° 01' 05"	17° 59' 29"	115
21	Kakanj	Donja papratnica	Ka	44° 04' 42"	18° 06' 06"	450
22	Tuzla	Donje dubrave	Tu	44° 29' 39"	18° 40' 50"	245
23	Olovo	Boganovići	O	44° 08' 18"	18° 33' 11"	510
24	Bratunac	Konjevići	Br	44° 14' 48"	19° 06' 38"	220
25	Sarajevo	Tihovići	S	43° 55' 13"	18° 22' 48"	690

Every population was represented with 12 dominant normally developed trees; 10 healthy and undamaged leaves were sampled from the sunny part of each crown to get representative, current phenotype condition, without modification caused by silvicultural measures (Franjić 1996; Kajba 1996; Idžojtić et al. 2006; Mikić 2007; Ballian and Čabaravdić 2005; Ballian et al. 2010, 2014; Zebec et al. 2010). Fully developed leaves were collected from the same position from all trees. In total 3000 leaves were collected and morphometrically analyzed from trees with exclusively generative origin. Minimal distance between two tested individuals was at least 50 m to exclude possibility of their interaction. Leaves were collected in August and September 2014 and have been herbarized immediately after collection. Morpho-

metric measurements of fruits and leaves were performed with caliper with $\pm 0,01$ mm accuracy. For morphometric analysis 10 fruit and 19 leaf parameters were defined; from all fruit parameters eight were measured and two were derived (Fig. 2).

Measured fruit parameters:

- F_1 = Fruit petiole length,
- F_2 = Length of fruit wing with nut,
- F_3 = Fruit wing width,
- F_4 = Length of fruit wing without nut,
- F_5 = Length of fruit wing from its widest part,
- F_6 = Fruit nut length,
- F_7 = Fruit nut width
- F_8 = Fruit angle (α).

Derived parameters:

- $F_9 = F_3/F_2,$
- $F_{10} = F_7/F_6.$

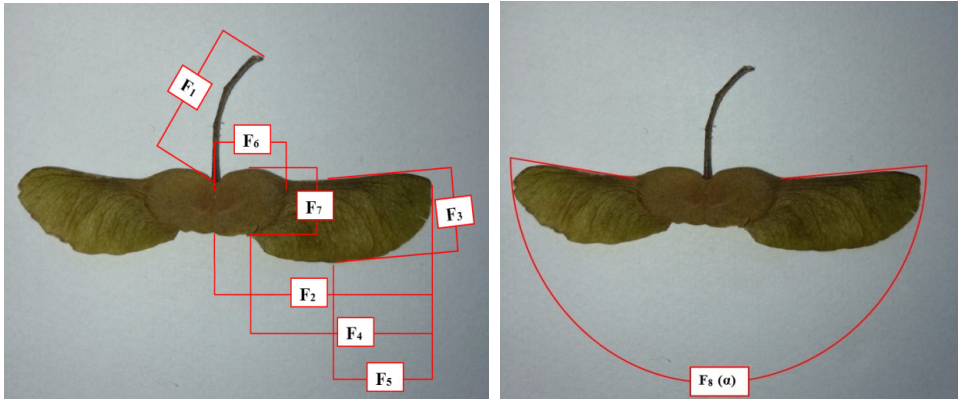


Figure 2. Morphologic fruit parameters: (F_1 - F_7)- left and (F_8) - right.

From 19 leaf parameters (L) 15 were measured and 4 were derived (Fig. 3).

Measured parameters:

- L_1 = Leaf petiole length,
- L_2 = Maximal leaf blade length,
- L_3 = Central vein length,
- L_4 = Length of the leaf blade to the top of lateral lobes,
- L_5 = Length of the leaf blade to the notches of lateral lobes,
- L_6 = Notch depth of the leaf blade basis,
- L_7 = Length of the central lobe to the notches of lateral lobes,
- L_8 = Leaf blade width between tops of lower lobes,
- L_9 = Leaf blade width between notches of lower lobes,
- L_{10} = Maximal leaf blade width,
- L_{11} = Leaf blade width between lateral lobe tops,

L_{12} = Leaf blade width between lateral lobe notches,

L_{13} = Central lobe width,

L_{14} = Angle (α) between central vein and lateral lobe and

L_{15} = Angle (β) between central vein and lower lobe.

Units for parameters L_1 - L_{13} were expressed in millimeters and for parameters L_{14} and L_{15} in degrees.

Derived parameters:

$L_{16} = L_2/L_{10}$,

$L_{17} = L_2/L_7$,

$L_{18} = L_8/L_9$, and

$L_{19} = L_8/L_{11}$.

Statistical evaluation included three multivariate parts: analysis of predominant components, discriminative analysis and cluster analysis. General structure of morphologic population variability as well as the contribution of individual leaf and fruit parameters was made by the analysis of predominant components. It represents the analysis of new, artificial variables, which represent the linear combination of original variables (Sharma 1996), usually frequently used in biological research,

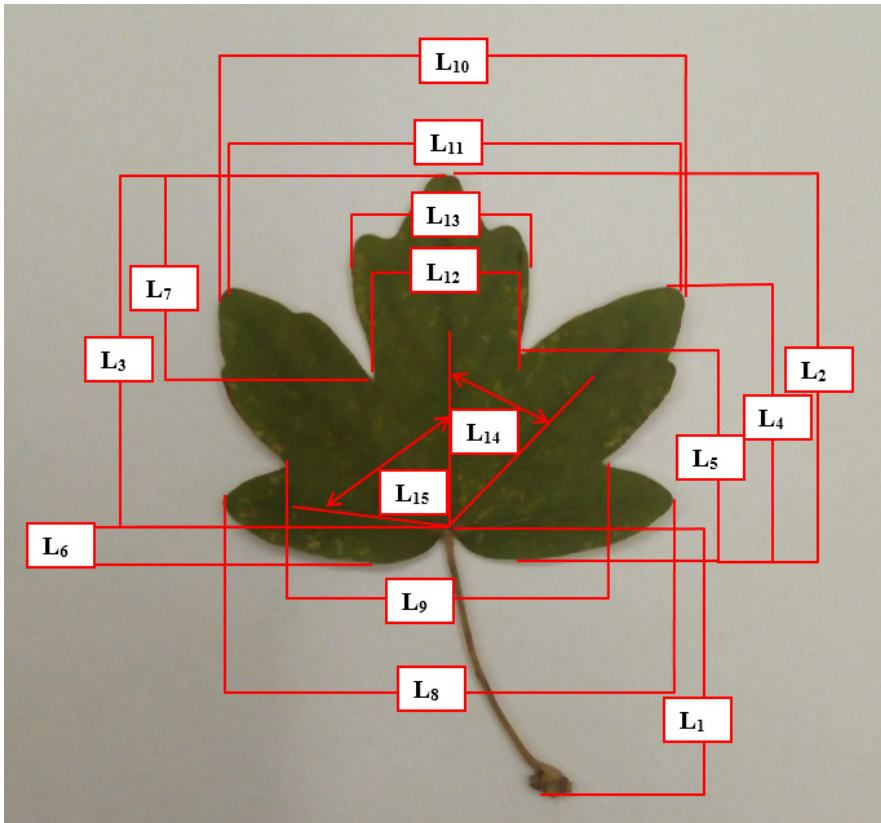


Figure 3. Analyzed leaf parameters.

to define number of main components, their values, variability percent and cumulative variance. In the process the Kaiser rule is usually applied (Kaiser, 1958), by which only components with value above 1 are presented.

In the analysis correlation coefficients between basic characters and main components are provided as well as community values, indicating share of individual characteristics in predominant components. Analysis was performed by the use of SPSS 20.0 program (IBM Corp. 2011), while graphical material was elaborated in the PAST 3.18 program (Hammer et al. 2001).

To verify the presence of specific morphologic groups discriminative analysis was performed, also to define the contribution of particular parameters for separating studied populations. Populations were divided into smaller groups based on numerous variables (parameters) and grouped according to their familiarity (Čabaravdić 2012). For every discriminative function its own value was calculated, variance, cumulative variance as well as cannonic correlation between the function and original parameters. SPSS 20.0 and PAST 3.18 were used.

Cluster analysis was performed in program PAST 3.18 to gather similar individual groups by the distances between studied groups (Čabaravdić 2012) in multidimensional space (Tenjović 2000), based on hierarchical aglomerative clusterisation. Complete linkage and furthest-neighbour-distance were used as well as standard euclidian distance.

Some of the measured parameters of fruit (F_3) and leaves (L_5 , L_6 , L_9) were not taken in the statistical calculation because they did not show statistical significance at the level of the individual and the level of the population, and between populations.

Results

Statistical analysis confirmed five significant main components with values above 1 (Table 2), which explain 88.63 % of morphologic variability in studied species. Distribution of variance is different in each of main component, with the first explaining most of the morphological variability.

Table 2. Predominant component characteristics

Parameter	Value	Variance (%)	Cumulative variance (%)
1	14.70	58.82	58.82
2	2.65	10.60	69.42
3	2.09	8.35	77.77
4	1.49	5.97	83.74
5	1.22	4.89	88.63

For the first component (58.8% of variability) highest correlations (>0.70) were confirmed for 10 measured leaf parameters ($L_1, L_2, L_3, L_4, L_7, L_8, L_{10}, L_{11}, L_{12}$, and L_{13}) and two fruit parameters (F_6, F_7) (Table 3). Second main component explained additional 10.6% of variability with highest confirmed correlation for parameters L_{14}, L_{15} and L_{19} and the third main component for parameters F_2, F_4, F_5, F_6 and F_7 . For the fourth main component highest correlations were defined for L_{17} and L_{18} and for the last, fifth main component F_1, F_8, F_9 and L_{16} .

Structure of morphological variability in studied populations is presented in Figure 4. All studied populations belonging to Herzegovinian region are located on the left side of the chart, as their average (predominantly leaf) parameters are smaller compared to average parameter values of all studied populations.

In particular four populations (Trebinje, Ljubuški, Mostar and Rama) represent group which separates from other studied populations, while special structure indicates population from B. Luka. It is showing agreement with other groups in only 2 from 12 studied parameters. Without above mentioned groups, the rest of 20 populations in the central part create homogenous unit. Differentiation between the southern populations was also obtained in the same way at the molecular level (Kvesić et al. 2020b).

Table 3. Correlation matrix of morphologic characteristics and predominating components

Morphologic parameters	Predominating component				
	1	2	3	4	5
F_1	0.07	-0.06	0.08	0.22	-0.33*
F_2	0.63	0.14	0.70*	0.07	-0.03
F_4	0.64	0.13	0.67*	0.05	0.03
F_5	0.41	0.02	0.68*	0.20	0.16
F_6	0.61*	0.21	0.55	-0.17	-0.19
F_7	0.58*	0.10	0.55	-0.14	0.34
F_8	0.01	0.01	-0.02	0.41	0.52*
F_9	0.20	-0.17	-0.19	0.14	0.40*
F_{10}	-0.04	-0.16	0.02	0.03	0.80*
L_1	0.83*	0.05	-0.14	-0.06	-0.03
L_2	0.96*	0.08	-0.21	0.05	-0.04
L_3	0.95*	-0.06	-0.16	0.07	-0.07
L_4	0.95*	-0.17	-0.20	-0.01	0.00
L_7	0.75*	0.27	-0.17	0.49	-0.13
L_8	0.91*	-0.19	-0.24	0.02	0.07
L_{10}	0.93*	0.18	-0.27	0.01	0.05
L_{11}	0.91*	0.28	-0.26	0.00	0.04
L_{12}	0.85*	0.17	-0.19	-0.38	0.02

Morphologic parameters	Predominating component				
	1	2	3	4	5
L ₁₃	0.85*	0.30	-0.20	-0.18	0.00
L ₁₄	-0.35	0.88*	-0.14	0.01	0.10
L ₁₅	-0.22	0.84*	-0.17	0.09	0.11
L ₁₆	0.30	-0.35	0.14	0.18	-0.36*
L ₁₇	0.27	-0.34	-0.06	-0.78*	0.16
L ₁₈	0.26	-0.35	-0.13	0.64*	0.01
L ₁₉	0.44	-0.76*	-0.07	0.01	0.07

* The highest absolute correlation of morphological character in main component.

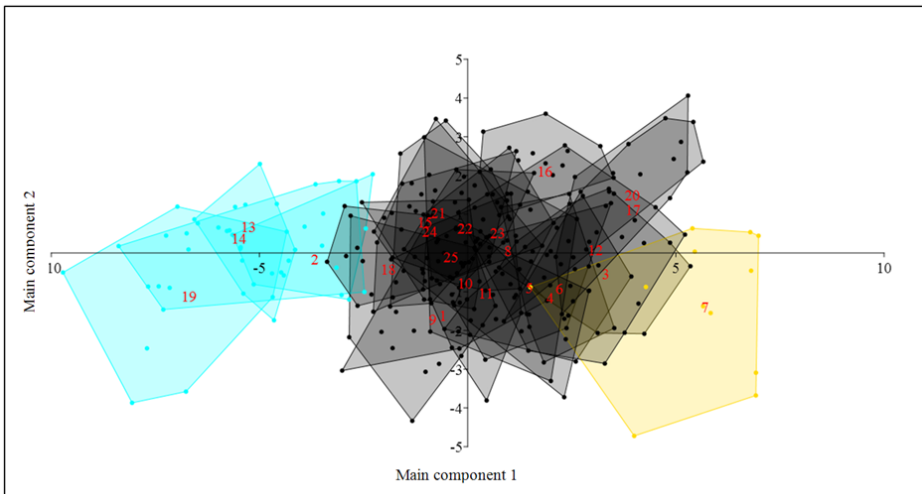


Figure 4. Population differences based on first and second main component.

In the discriminant analysis 10 significant functions with significance ($p \leq 0.05$) explained 95.2% of total morphologic variability (Table 4); first function explained 62.5% (Table 5) and the remaining nine additional 32.7% of variability, respectively. In the first discriminative function populations are separated most evidently based on measured leaf parameters (Table 6) (L₂, L₁₀, L₄, L₃, L₈, L₁₁, L₁, L₁₂, L₁₃ and L₇). With second discriminative function only parameter F₄ indicated significant correlation.

Based on first three discriminative functions 2D scatterplots of studied populations with their separation are presented. On Figure 5 distinction between three submediterranean (Trebinje, Ljubuški i Mostar) population from the rest is evident. Rama and Gacko populations represent link between submediterranean and homogenous remaining part of studied populations, where only population from Banja Luka is separated. Separation is therefore based on eco-geographical characteristics of populations.

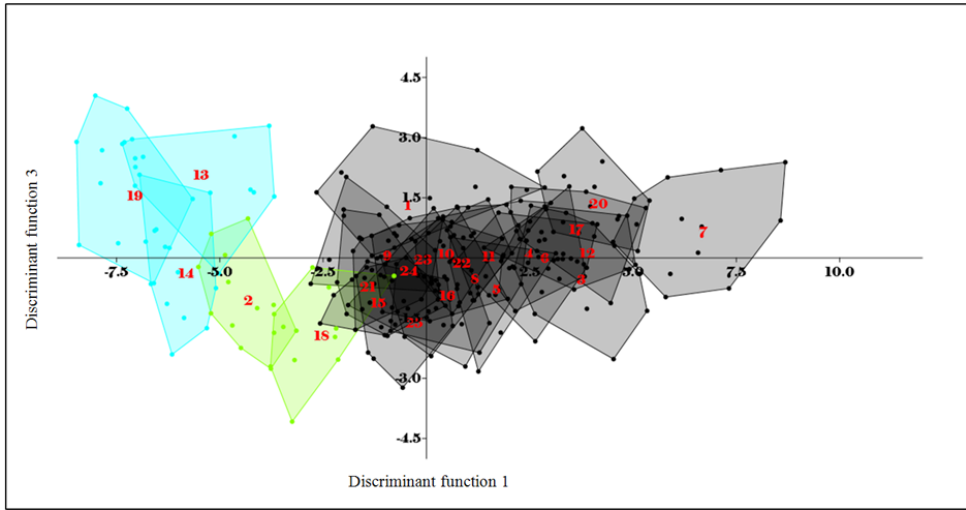


Figure 5. Population differentiation based on the first and third discriminant function.

Table 4. Statistic characteristics of discriminative functions

Discriminative function	Wilks' Lambda value	χ^2	Degrees of freedom	Significance
1	0.00	2150.48	600	0.00
2	0.01	1452.24	552	0.00
3	0.01	1177.96	506	0.00
4	0.03	990.14	462	0.00
5	0.05	824.00	420	0.00
6	0.08	688.14	380	0.00
7	0.13	566.22	342	0.00
8	0.18	463.29	306	0.00
9	0.26	366.34	272	0.00
10	0.34	297.03	240	0.01

Table 5. Statistic characteristics of discriminative functions

Discriminative function	Personal value of function	Variance (%)	Cumulative variance (%)	Cannonic correlation
1	11.79	62.50	62.50	0.96
2	1.72	9.13	71.62	0.80
3	0.99	5.22	76.84	0.70
4	0.83	4.42	81.26	0.67
5	0.64	3.40	84.67	0.63
6	0.56	2.97	87.64	0.60

Discriminative function	Personal value of function	Variance (%)	Cumulative variance (%)	Cannonic correlation
7	0.46	2.42	90.06	0.56
8	0.42	2.25	92.31	0.55
9	0.29	1.53	93.83	0.47
10	0.25	1.32	95.16	0.45

Table 6. Correlation between cannonic discriminative functions and original traits parameters

Parameter	Discriminative function									
	1	2	3	4	5	6	7	8	9	10
L ₂	0.74*	-0.04	-0.12	0.06	0.15	0.08	0.13	-0.14	0.08	-0.18
L ₁₀	0.70*	-0.03	-0.04	0.07	0.08	0.13	-0.08	-0.22	-0.01	-0.22
L ₄	0.70*	-0.11	0.04	-0.08	0.12	0.08	0.14	-0.08	-0.02	-0.11
L ₃	0.68*	-0.08	-0.19	0.01	0.01	-0.05	0.24	-0.05	-0.02	-0.05
L ₈	0.65*	-0.06	0.12	-0.05	0.03	0.05	-0.20	0.15	-0.17	-0.14
L ₁₁	0.60*	-0.01	-0.04	0.15	0.10	0.08	-0.11	-0.23	-0.02	-0.15
L ₁	0.48*	-0.15	-0.02	0.03	-0.06	-0.05	0.17	0.12	0.06	0.35
L ₁₂	0.46*	0.06	-0.16	0.29	0.20	0.02	-0.03	-0.11	0.17	0.01
L ₁₃	0.45*	0.10	-0.21	0.26	0.23	0.23	0.01	-0.09	-0.01	0.15
L ₇	0.31*	-0.01	-0.16	-0.05	0.03	0.04	0.17	-0.06	-0.08	-0.12
F ₁	0.01	0.14	-0.43*	0.34	0.09	0.23	0.03	0.21	-0.09	-0.09
F ₆	0.19	0.14	0.17	0.57*	-0.22	-0.13	0.09	-0.48	0.13	0.16
F ₂	0.19	0.15	0.16	0.55*	-0.42	-0.12	0.36	-0.02	-0.04	-0.04
F ₅	0.08	0.12	0.28	0.37*	-0.33	0.18	0.23	-0.04	-0.29	0.12
F ₄	0.21	0.36	0.18	0.44*	-0.44	-0.15	0.38	0.00	-0.04	-0.01
F ₉	0.05	-0.12	0.08	-0.02	0.06	0.07	0.41*	0.15	-0.15	0.06
F ₁₀	-0.02	0.02	0.20	-0.18	-0.27	0.16	-0.03	0.56*	0.09	-0.10
F ₇	0.16	0.13	0.30	0.39	-0.41*	-0.01	0.05	-0.03	0.15	0.05
L ₁₇	0.09	-0.01	0.17*	0.11	0.09	0.01	-0.13	-0.01	0.12	-0.01
L ₁₈	0.08	0.00	0.19	-0.13	0.19	0.17	0.02	0.22*	-0.09	-0.18
L ₁₆	0.07	-0.02	-0.13	0.00	0.14	-0.11	0.30*	0.12	0.11	0.11
L ₁₄	-0.10	0.08	-0.02	0.09	0.07	0.17	-0.16	-0.18*	0.09	-0.08
L ₁₉	0.16	-0.06	0.20	-0.11	0.02	-0.05	-0.14	0.32*	-0.14	-0.02
L ₁₅	-0.06	0.10	0.06	0.07	0.18	0.40*	-0.06	-0.21	0.14	-0.17
F ₈	0.01	-0.04	-0.03	-0.01	-0.30	0.32*	-0.31	0.26	0.16	0.06

*biggest absolute correlation between studied parameters and discriminative function

Cluster analysis confirmed results from discriminative analysis with three different subclusters: first is composed from populations Trebinje, Ljubuški, and Mostar, second by population B. Luka, and the third one by the remaining populations. The similarity between subclusters is achieved in the last step (Fig. 6).

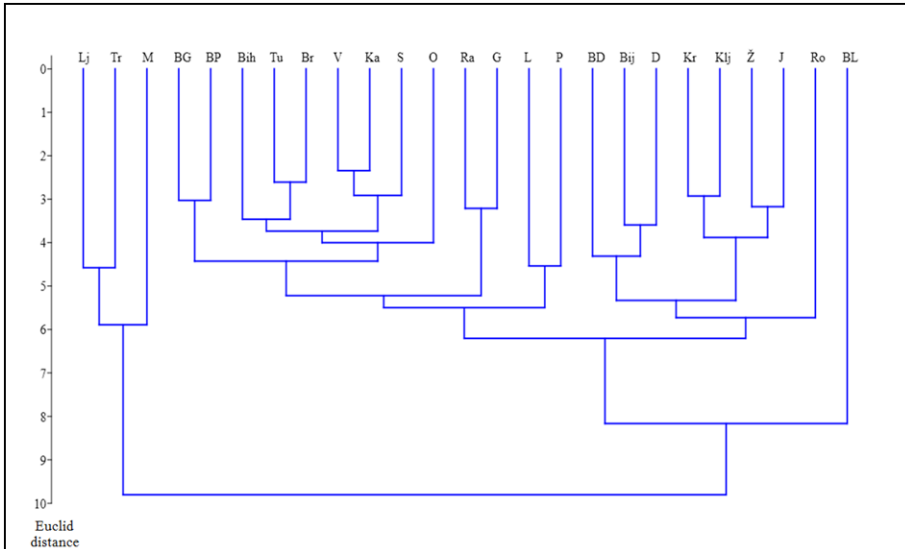


Figure 6. Euclid distance between studied populations. P – Posušje; R – Rama; Kr – Kreševo; Ž – Žepče; J – Jajce; Klj – Ključ; BL – B. Luka; BG – B. Grahovo; L – Livno; BP – B. Petrovac; Bih – Bihać; BD – B. Dubica; Lj – Ljubuški; M – Mostar; V – Višegrad; Ro – Rogatica; Bij – Bijeljina; G – Gacko; Tr – Trebinje; D – Derventa; Ka – Kakanj; Tu – Tuzla; O – Olovo; Br – Bratunac; S – Sarajevo.

According to our results, studied morphologic characteristics in relation to the geographical location/position of studied populations was confirmed by the Mantel test. Matrix between morphological distance and geographical distance was significant (0.3185; $p_{\text{MANTEL}} = 0.0003$), as well as between precipitation (0.4367; $p_{\text{MANTEL}} = 0.0004$) and between temperature (0.5342; $p_{\text{MANTEL}} = 0.0006$), respectively.

We may conclude, that morphologic differences confirmed between different populations of *A. campestre* in Bosnia and Herzegovina origin from different ecological site conditions and geographical locations.

Discussion and conclusion

Little morphologic research of *A. campestre* in the European region may be related to its modest commercial value. In spite of its significant ecological characteristics within various ecosystems of species natural distribution, the focus of presented study targeted the within-species taxonomy of *Acer campestre* sensu latiore.

The main component analysis confirmed the morphological similarity of populations from Herzegovina compared to other studied populations despite evidenced continuity in the morphologic connection between populations. The similarity is the consequence of smaller average leaf parameters compared to the average leaf parameter values of all studied populations.

The morphologic similarity in PCA indicates a connection between morphologic variability and geographic latitude. In the case of *A. monspessulanum*, *A. obtusatum* (Tripić 2011), and *A. heldreichii* (Perović 2007) no such pattern was confirmed within species. Only in the case of *A. intermedium* population pattern is in indirect connection with ecogeographic species factors (Tripić 2011). In other *Acer* species, leaf parameters explained more morphologic variability than fruit parameters (Tripić 2011), as confirmed in our study.

Separation of populations based on discriminatory analysis as well as cluster analysis separated three southernmost Herzegovinian populations as a homogeneous group (Trebinje, Ljubuški, and Mostar) and also populations Banja Luka. Both Rama and Gacko populations, belonging also to the Herzegovinian region are positioned between the submediterranean and the remaining studied populations. This is also confirmed at the molecular level by the use of microsatellite primers (Kvesić et al. 2020b).

Measured leaf parameters used for multivariate analysis represent main morphologic population separators, which was not the case in other *Acer* species (Tripić 2011); *A. monspessulanum* and *A. intermedium* within-species populations are separated more by the fruit than leaf parameters, respectively. In *A. obtusatum*, buds are the dominant discriminatory carrier, fruit and leaf parameters are insignificant, while in this research we obtained eco-level distribution. The reason for the inconsistent variability pattern in various *Acer* species may be different morphologic species characteristics as well as different research approaches and methodologies.

As several studies confirmed tight relation between leaf parameter variability and microclimatic conditions, the position of leaves on the shoots and the type of shoots (Melville 1939; Glišić 1975; Blue and Jensen 1988; Trinajstić and Franjić 1996; Franjić 1996; Trinajstić et al. 2001; Ballian et al. 2010. 2014; Bruschi et al. 2003; Poljak 2014; Poljak et al. 2014), special emphasis and care was dedicated to collecting the research material. Similarity analysis confirmed tighter relation with ecological parameters than geographical, with air temperature as a more significant influence than precipitation.

It is assumed that determining factors for various *Acer* species involve also *A. campestre*, according to the results of Kabaš et al. (2014) for the Serbia and Kosovo region.

Presented results may serve for the comparison and future research of other natural distribution areas of *A. campestre* and definition of interaction between ecological, geographic, climatic, and migration factors on morphologic variability of the species.

References

- Ballian D, Čabaravdić A (2005) Interpopulation variability of some morphological characteristics of silver fir (*Abies alba* Mill.) from central Bosnia. Radovi šumarskog instituta 40 (1): 5–18. [In Croatian]
- Ballian D, Memišević M, Bogunić F, Bašić N, Marković M, Kajba D (2010) Morphological variability of pedunculate oak (*Quercus robur* L.) in the region of Croatia and Western Balkans. Šumarski list 7–8: 371–386. [In Croatian]
- Ballian D, Hajrudinović A, Franjić J, Bogunić F (2014) Morphological variability of the leaves of the macedonian oak (*Quercus trojana* Webb.) in Bosnia and Herzegovina and Montenegro. Šumarski list 3–4: 135–144. [In Croatian]
- Blue MP, Jensen RJ (1988) Positional and seasonal variation in oak (*Quercus*; Fagaceae) leaf morphology. American Journal of Botany 75 (7): 939–947.
- Bruschi P, Grossoni P, Bussotti F (2003) Within- and among-tree variation in leaf morphology of *Quercus petraea* (Matt.) Liebl. natural populations. Trees 17 (2): 164–172. <https://doi.org/10.1007/s00468-002-0218-y>
- Čabaravdić A (2012) Planiranje eksperimenata u biotehničkim naukama. Sarajevo, 22. [In Bosnian]
- Chybicki IJ, Waldon-Rudzionek B, Meyza K (2014) Population at the edge: increased divergence but not inbreeding towards northern range limit in *Acer campestre*. Tree Genetics and Genomes 10: 1739–1753. <http://dx.doi.org/10.1007/s11295-014-0793-2>
- Drenkovski R (1979) Taxonomic processing of *Acer campestre*-*Acer marsicum*-complex in Yugoslavia. Doctoral thesis. Skopje-Belgrade, 116–139./ Taksonomska obrada *Acer campestre*-*Acer marsicum*-kompleksa u Jugoslaviji. Doktorska disertacija. Skopje-Beograd, 116–139. [In Serbian]
- Food and Agriculture Organization of the United Nations (2001) Global Ecological Zoning for the Global Forest Resources Assessment 2000. Final report. Rome, Italy. <https://www.fao.org/3/ad652e/ad652e00.htm#TopOfPage>
- Franjić J (1996) Morphometric analysis of leaf variability Posavina and Podravina populations of the common oak (*Quercus robur* L., Fagaceae) in Croatia. Glasnik za šumske pokuse: Annales Experimentis Silvarum Culturae Provehendis, 33: 153–214. [In Croatian]
- Glišić M (1975) Pitomi kesten (*Castanea sativa* Mill.) u Srbiji i njegov biološki i ekološki varijabilitet. Institut za šumarstvo i drvnu industriju, Beograd, 211./ Sweet chestnut (*Castanea sativa* Mill.) in Serbia and its biological and ecological variability. Institute of Forestry and Wood Industry, Belgrade, 211. [In Serbian]
- Hammer Ø, Harper DAT, Ryan PD (2001) PAST – Paleontological Statistics Software Package for Education and Data Analysis. Palaeontologia Electronica 4 (1): 9.
- IBM Corp. Released 2011. IBM SPSS Statistics for Windows, Version 20.0. Armonk, New York: IBM Corp.

- Idžojtić M, Zebec M, Drvodelić D (2006) Varijabilnost populacija brekinje u kontinentalnom dijelu Hrvatske prema morfološkim obilježjima lišća i plodova. Glasnik za šumske pokuse 5: 305–314./ Variability of checker tree's populations in the continental part of Croatia according to morphological characteristics of leaves and fruits. Journal of Forest Experiments 5: 305–314. [In Bosnian]
- Jones EW (1945) Biological Flora of the British Isles: *Acer pseudoplatanus* L. Journal of Ecology 32: 220–237.
- Jovanović B (2000) Dendrologija. Univerzitetski udžbenik. Beograd, 360./ Dendrology. University textbook. Belgrade, 360. [In Bosnian]
- Kabaš E, Batanjski V, Glasnović P, Vicić P, Tanasković A, Kuzmanović N, Lakušić D, Šižar-Sekulić J (2014) Towards detecting bioclimatic niche – species distribution modelling in four maple species (*Acer* spp.). Acta Botanica Croatica 73 (2): 401–417. <https://doi.org/10.2478/botcro-2014-0007>
- Kaiser HF (1958) The varimax criterion for analytic rotation in factor analysis. Psychometrika 23: 187–200.
- Kajba D (1996) Interpopulation and intrapopulation variability of the Silver Birch (*Betula pendula* Roth.) in a part of its habitat in the Republic of Croatia. Glasnik za šumske pokuse 33: 53–108. [In Croatian]
- Kvesić S, Ballian D, Memišević Hadžić M (2019) Population variability of field maple (*Acer campestre* L.) in Bosnia and Herzegovina according to the fruit morphology. Šumarski list 11/12: 529–538. <https://doi.org/10.31298/sl.143.11-12.3>
- Kvesić S, Ballian D, Memišević Hodžić M (2020a) Leaf variability of field maple populations (*Acer campestre* L.) in Bosnia and Herzegovina. Šumarski list 144 (1–2): 15–26. <https://doi.org/10.31298/sl.144.1-2.2>
- Kvesić S, Hodžić MM, Ballian D, Gomory D, Fussi B (2020b) Genetic variation of a widespread subdominant tree species (*Acer campestre* L.) in Bosnia and Herzegovina. Tree Genetics & Genomes 16: 82. <https://doi.org/10.1007/s11295-020-01473-9>
- Melville R (1939) The application of biometrical methods to the study of elms. Journal of the proceedings of the Linnean Society. Botany 151: 152–159.
- Mikić T (2007) Analiza morfoloških parametara lista divlje trešnje (*Prunus avium* L.) u Bosni i Hercegovini. Doktorska disertacija, Banja Luka, Republika Srpska, BiH./ Analysis of morphological parameters of wild cherry (*Prunus avium* L.) leaves in Bosnia and Herzegovina. Doctoral thesis. Banja Luka, Republic of Serbia. [In Serbian]
- Nagy L, Ducci F (2004) EUFORGEN Technical Guidelines for genetic conservation and use for field maple (*Acer campestre*). International Plant Genetic Resources Institute, Rome, Italy, 6.
- Perović M (2007) Morphometric characteristics of the leaves of Greek maple (*Acer heldreichii* Orph) in central Serbia. Glasnik Šumarskog Fakulteta 96: 69–82. [In Serbian]
- Poljak I (2014) Morfološka i genetička raznolikost populacija i kemijski sastav plodova europskog pitomog kestena (*Castanea sativa* Mill.) u Hrvatskoj. Doktorska

- disertacija. Šumarski fakultet Sveučilišta u Zagrebu, 1–194./ Morphological and genetic diversity of populations and chemical composition of European chestnut fruits (*Castanea sativa* Mill.) in Croatia. Doctoral thesis. Faculty of Forestry, University of Zagreb, 1–194. [In Croatian]
- Poljak I, Idžojić M, Šapić I, Vukelić J, Zebec M (2014) Population variability of grey (*Alnus incana* /L./ Moench) and black alder (*A. glutinosa* /L./ Gaertn.) in the Mura and Drava region according to the leaf morphology. Šumarski list, 138(1–2): 7–17. [In Bosnian]
- Praciak A, Pasiecznik N, Sheil D, van Heist M, Sassen M, Correia CS, Dixon C, Fyson G, Rushford K, Teeling C (2013) The CABI encyclopedia of forest trees, CABI, Oxfordshire, UK.
- Savill PS (2013) The silviculture of trees used in British forestry. Centre for Agriculture and Bioscience International.
- Sharma S (1996) Applied Multivariate Techniques. John Wiley and Sons, Inc., New York, Chichester, Brisbane, Toronto, Singapore, 512.
- Šilić Č (1990) Atlas of trees and shrubs. IP "Svjetlost", Sarajevo, 132. / Atlas drveća i grmlja. IP "Svjetlost", Sarajevo, 132. [In Croatian]
- Tenjović L (2000) Statistics in Psychology. Handbook. Center for Applied Psychology of the Society of Psychologists of Serbia, Belgrade, 90. / Statistika u psihologiji. Priručnik. Centar za primijenjenu psihologiju Društva psihologa Srbije, Beograd, 90. [In Bosnian]
- Trinajstić I, Franjić J (1996) Listovi kratkoga plodnoga izbojka, osnova za morfometrijsku analizu lista hrasta lužnjaka (*Quercus robur* L. Fagaceae). In: S. Matić, J. Gračan (Eds): Skrb za hrvatske šume od 1846. do 1996, Unapređenje proizvodnje biomase šumskih ekosustava. Hrvatsko šumarsko društvo 1: 169–178. [In Croatian]
- Trinajstić I, Kovačić S, Šimić D (2001) Are they any morphometrical differences in the leaves of two shoot types of silver birch (*Betula pendula* Roth. Betulaceae)? Glasnik za šumske pokuse 38: 77–87.
- Tripić R (2011) Patterns of ecological-morphological differentiation of populations and species of *Goniocarpa* Pojárk's genus *Acer* in the southeastern Dinarides. Doctoral thesis. Sarajevo, 350. / Obrasci ekološko-morfološke diferencijacije populacija i vrsta sekcije *Goniocarpa* Pojárkova roda *Acer* na jugoistočnim Dinaridima. Doktorska disertacija. Sarajevo, 1–350. [In Bosnian]
- Zebec M, Idžojić M, Poljak I, Mihaldinec I (2010) The variability of field elm (*Ulmus minor* Mill. sensu latissimo) in croatian Drava river valley according to the leaf morphology. Šumarski list, 134 (11–12): 569–580. [In Bosnian]

Appendix 1

Table A1. Descriptive indicators of fruit traits for all populations together (Kvesić et al. 2019)

Fruit trait	Number of data	Mean value	Minimum	Maximum	Standard deviation	Standard error	Variability coefficient, %
F ₁	1500	12.63 mm	4.20 mm	30.30 mm	4.08 mm	0.07 mm	32.31
F ₂	3000	28.35 mm	14.50 mm	43.50 mm	4.09 mm	0.07 mm	14.42
F ₄	3000	27.10 mm	11.10 mm	43.50 mm	4.57 mm	0.08 mm	16.86
F ₅	3000	11.11 mm	4.50 mm	21.50 mm	2.32 mm	0.04 mm	20.90
F ₆	3000	8.56 mm	5.60 mm	11.90 mm	0.99 mm	0.02 mm	11.54
F ₇	3000	8.14 mm	5.20 mm	11.80 mm	0.95 mm	0.02 mm	11.65
F ₈	1500	182.87°	120.00°	247.00°	21.26°	0.39°	11.63
F ₉	3000	0.33	0.20	0.50	0.04	0.001	12.92
F ₁₀	3000	0.95	0.70	1.23	0.08	0.001	8.13

Table A2. Descriptive indicators of leaf traits for all populations together (Kvesić et al. 2020a)

Leaf trait	Number of data	Mean value	Minimum	Maximum	Standard error	Standard deviation	Variability coefficient, %
L ₁	3000	35.63 mm	13.00 mm	72.00 mm	8.08 mm	0.15 mm	22.67
L ₂	3000	42.94 mm	21.00 mm	69.00 mm	7.39 mm	0.14 mm	17.22
L ₃	3000	38.74 mm	19.00 mm	67.00 mm	6.92 mm	0.13 mm	17.87
L ₄	3000	28.60 mm	10.00 mm	48.00 mm	5.68 mm	0.10 mm	19.86
L ₇	3000	19.45 mm	8.00 mm	37.00 mm	4.20 mm	0.08 mm	21.69
L ₈	3000	45.15 mm	20.00 mm	84.00 mm	9.26 mm	0.17 mm	20.50
L ₁₀	3000	50.77 mm	26.50 mm	84.00 mm	8.28 mm	0.15 mm	16.32
L ₁₁	3000	49.91 mm	26.50 mm	80.00 mm	8.03 mm	0.15 mm	16.09
L ₁₂	3000	17.46 mm	7.50 mm	35.00 mm	3.60 mm	0.07 mm	20.61
L ₁₃	3000	18.41 mm	8.00 mm	35.00 mm	3.48 mm	0.06 mm	18.92
L ₁₄	3000	47.23°	30.00°	75.00°	6.17°	0.11°	13.06
L ₁₅	3000	85.88°	58.00°	118.00°	9.13°	0.17°	10.63
L ₁₆	3000	0.85	0.63	1.09	0.06	0.00	7.23
L ₁₇	3000	2.25	1.51	4.00	0.32	0.01	14.27
L ₁₈	3000	1.24	0.87	1.74	0.11	0.00	9.26
L ₁₉	3000	0.90	0.53	1.37	0.12	0.00	13.20