

ONKOLOŠKI INŠTITUT V LJUBLJANI
INSTITUTE OF ONCOLOGY, LJUBLJANA

REGISTER RAKA ZA SLOVENIJO
CANCER REGISTRY OF SLOVENIA

INCIDENCA RAKA V SLOVENIJI
CANCER INCIDENCE IN SLOVENIA

1993

POROČILO RR ŠT. 35
REPORT No. 35

LJUBLJANA 1996

ISSN 1318-2471

Uredniški odbor

Editorial Board

Rastko Golouh
Jurij Lindtner
Vera Pompe Kirn
Maja Primic Žakelj
Božena Ravnihar
Zvonimir Rudolf
Branko Zakotnik

Osebjje Registra raka

Staff of the Cancer Registry

Vera Pompe Kirn, vodja - head
Neva Volk, mlada raziskovalka - junior researcher
Jurij Modic, računalniška obdelava - EDP analysis
Sašo Celarc, slike - figures

Mojca Brus
Marjeta Bukovec
Neža Milčič
Nataša Robek
Fani Škrlec

Tone Žakelj, oblikovanje tabel in priprava za tisk - desk-top publishing

Izdal Onkološki inštitut, Ljubljana
Published by Institute of Oncology, Ljubljana, Slovenia

Direktor
Director Zvonimir Rudolf

Naslov
Correspondence to
Prof. Vera Pompe Kirn, M.D., D.Sc.
Institute of Oncology
Zaloška c. 2, 1001 Ljubljana, p.p. 17, Slovenia
tel. +386 (0)61 13-24-113

Tisk
Printed by Grafis

VSEBINSKO KAZALO**CONTENTS**Stran
Page

Uvod in pojasnila	5
Introduction and Comments	8

Slike**Figures**

1. Najpogostejše lokacije raka po spolu - Slovenija 1993 The leading cancer sites by sex - Slovenia 1993	11
2. Groba in kumulativna letna incidenca raka vseh lokacij po spolu - Slovenija 1950-93 Crude and cumulative annual cancer incidence; all sites by sex - Slovenia 1950-93	12
3. Groba letna incidenca izbranih rakov po spolu - Slovenija 1950-93 Crude annual cancer incidence by selected primary sites and sex - Slovenia 1950-93	13
4. Letna incidenca intraepitelijske in invazivne oblike ter umrljivost zaradi karcinoma materničnega vratu - Slovenija 1953-93 Annual incidence of intraepithelial and invasive, and mortality of cervical carcinoma - Slovenia 1953-93	14
5. Povprečna letna incidenca invazivne oblike karcinoma materničnega vratu po območjih občin - Slovenija 1989-93 Average annual invasive cervical carcinoma incidence by communities - Slovenia 1989-93	15
6. Starostno specifična incidenca intraepitelijske in invazivne oblike karcinoma materničnega vratu - Slovenija 1961-93 Age-specific intraepithelial and invasive cervical carcinoma incidence - Slovenia 1961-93	16
7. Porazdelitev stadijev invazivnega karcinoma materničnega vratu po starosti - Slovenija 1991-93 Stage distribution of invasive cervical carcinoma by age - Slovenia 1991-93	17
8. Relativno desetletno preživetje bolnic z invazivnim karcinomom materničnega vratu po starosti - Slovenija 1983-87 Relative ten-year survival of invasive cervical carcinoma patients by age - Slovenia 1983-87	17

Tabele**Tables**

1. Prebivalstvo Slovenije po starosti in spolu na dan 30. junija 1993 Population of Slovenia by age and sex on June 30th, 1993	19
---	----

2.	Prebivalstvo Slovenije po zdravstvenih regijah po spolu na dan 30. junija 1993 Population of Slovenia by health regions by sex on June 30th, 1993	20
3.	Število novih primerov raka ter število in odstotek primerov, registriranih samo iz zdravniških poročil o vzroku smrti, po lokaciji in spolu - Slovenija 1993 Total number of new cancer cases, number and percentage of cases registered from death certificates only, by site and sex - Slovenia 1993	21
4.	Število novih primerov raka po lokaciji, spolu in starosti - Slovenija 1993 Number of new cancer cases by primary site, sex, and age - Slovenia 1993	25
5.	Incidenca raka na 100 000 prebivalcev po lokaciji, spolu in starosti - Slovenija 1993 Cancer incidence per 100 000 population by site, sex and age - Slovenia 1993	29
6.	Število novih primerov raka po zdravstvenih regijah, po najpogostejših lokacijah in spolu - Slovenija 1993 Number of new cancer cases by health regions, by most frequent sites and sex - Slovenia 1993	35
7.	Število novih primerov raka, ugotovljenih v bolnišnicah, ter število in odstotek mikroskopsko potrjenih primerov, po lokaciji in spolu - Slovenija 1993 Total number of new cancer cases diagnosed in hospitals and number and percentage of microscopically confirmed cases - by site and sex - Slovenia 1993	36
8.	Število histološko (in citološko) potrjenih novih primerov raka - po histološki vrsti in lokaciji - Slovenija 1993 Number of histologically (and cytologically) confirmed new cancer cases by histologic type and site - Slovenia 1993	40
9.	Število primerov ne-Hodgkinovih limfomov po lokaciji, spolu in starosti - Slovenija 1993 Total number of non-Hodgkin's malignant lymphomas by site, sex, and age - Slovenia 1993	46
10.	Število novih primerov raka po bolnišnicah ugotovitve diagnoze ter število in odstotek primerov, napotenih na Onkološki inštitut - Slovenija 1993 Number of new cancer cases diagnosed by reporting hospitals, and number and percentage of cases referred to the Institute of Oncology, Ljubljana - Slovenia 1993	47
11.	Število in odstotek novih primerov raka, ugotovljenih v bolnišnicah, po stadiju, lokaciji in spolu - Slovenija 1993 Number and percentage of new cancer cases reported by hospitals by stage, site and sex - Slovenia 1993	49

UVOD

Register raka za Republiko Slovenijo (Register) je bil ustanovljen pri Onkološkem inštitutu v Ljubljani leta 1950 na pobudo in pod vodstvom profesorice dr. Božene Ravnihar kot posebna služba za zbiranje in obdelavo podatkov o incidenci raka in o preživetju bolnikov z rakom. Prijavljanje raka je od takrat dalje v Republiki Sloveniji obvezno, z zakonom predpisano (*Ur. l. SRS*, št. 10/50, št. 29/50, št. 14/65, št. 1/80, št. 45/82, št. 42/85 in *Ur. l. RS*, št. 9/92). Podrobneje ga zaenkrat še vedno določa Pravilnik o prijavi in kontroli rakavih bolnikov in o drugih tehničnih vprašanih boja proti raku (*Ur. l. SRS*, št. 4/66).

Incidenca raka je po svetu zelo različna. Tudi Republika Slovenija kaže v zbolevnosti za rakom svojo posebno sliko. Zbrani podatki so številčna podlaga za ocenjevanje družbenega bremena rakavih bolezni v republiki, programiranje in ocenjevanje onkološkega varstva na področju primarne preventive, detekcije, diagnostike, zdravljenja, rehabilitacije, načrtovanje zmogljivosti in sredstev zdravstvenega varstva, ki so potrebna za obvladovanje rakavih bolezni (kadri, medicinska oprema, posteljne zmogljivosti), ter za klinične in epidemiološke raziskave v Sloveniji in v sklopu širših mednarodnih raziskav.

Populacijski register raka opravičuje svoj obstoj le, če se zbrani podatki tudi redno obdelujejo in objavljajo. Ena izmed stalnih oblik vračanja obdelanih informacij so prav letna poročila. Ker je virov informacij več, leta povsod po svetu izhajajo z dve- ali večletnim zamikom.

Register je prva letna poročila izdajal že v letih 1953-1957 za leta 1951-1955. Prva analiza podatkov za leto 1950 je bila objavljena v *Zdravstvenem vestniku* že leta 1951 (*Zdrav. Vestn.* 1951: 20, 264-277). Podatki za leta 1957-1971 so bili objavljani v periodičnih publikacijah Svetovne zdravstvene organizacije *Epidemiological and Vital Statistics Report* Vol. 14, No. 11, 1961; Vol. 16, No. 12, 1963; Vol. 17, No. 12, 1964; Vol. 19, No. 12, 1966; Vol. 20, No. 12, 1967) in v *World Health Statistics Report* (Vol. 23, No. 3, 1970; Vol. 24, No. 2, 1971; Vol. 25, Nos. 4, 5, 1972; Vol. 26, No. 8, 1973; Vol. 27, Nos. 6, 7, 1974). Podatki od leta 1965 dalje so bili spet redno objavljani v posebnih letnih poročilih z naslovom *Rak v Sloveniji (1965-1977)* oziroma *Incidenca raka v Sloveniji (1978-1992)* v slovenskem in angleškem jeziku. Glede na želje in pripombe uporabnikov poizkušamo ta letna poročila iz leta v leto dopolnjevati. Pri tem nam pomaga uredniški odbor, v katerem so zbrani specialisti različnih vej onkologije (kliniki, epidemiologi in patologi).

Naš Register je ena prvih tovrstnih služb v Evropi. Pred letom 1950 so bili populacijski registri raka ustanovljeni le v Hamburgu, na Danskem, v Veliki Britaniji, v Belgiji in v tedanji ZSSR. Prav zato so in so bili naši podatki o incidenci raka zanimivi tudi za širši svet. Leta 1957 je izšlo prvo obsežnejše poročilo za leta 1950-1955 v angleščini *Cancer in Slovenia 1955* (B. Ravnihar, A. Valentin, T. Božič, J. Doič, D. Pečirer). Podatke za leta 1956-1960, 1961-1965, 1968-1972, 1973-1976, 1978-1981 in 1982-1987 so objavili tudi v vseh šestih zvezkih knjige *Cancer Incidence in Five Continents*, UICC, Ženeva (Vol. 1-1966, eds. Doll R., Payne P., Waterhouse J.; Vol. 2-1970, eds. Doll R., Muir C., Waterhouse J.), in IARC, Lyon (Vol. 3-1976, eds. Waterhouse J., Muir C., Correa C., Powell J.; Vol. 4-1982, eds. Waterhouse J., Muir C., Shanmugaratnam K., Powell J.; Vol. 5-1987, eds. Muir C., Waterhouse J., Mack T., Powell J., Whelan S.; Vol. 6-1992, eds. Parkin M., Muir C., Whelan S., Gao Y., Ferlay J., Powell J.). Sedmi zvezek s podatki za obdobje 1988-1992 je v pripravi. Podatki o incidenci in umrljivosti za rakom za leta 1983-1990 so vključeni tudi v podatkovno bazo *Mreže evropskih registrov raka EUROCIM*, ki jo vzdržujeta Evropska komisija programa *Evropa proti raku* in Mednarodna agencija za raziskovanje raka.

V letu 1993 smo prešli na sodobnejšo, s programom *Oracle* podprto računalniško obdelavo podatkov na lastnem računalniku *Unix, SiliconGraphics IRIS4D/310S*. Zbrane podatke tako lažje obdelujemo še podrobneje v skladu s trenutno perečo problematiko v Sloveniji, našim raziskovalnim programom in željami naših uporabnikov. Ti podatki so objavljeni v domačem in tujem strokovnem tisku ter po potrebi tudi v dnevnikih časopisih. V letu 1991 je izredno veliko število uporabnikov zanimalo pojavljanje raka na območju posameznih občin. Ker je za tovrstno analizo v enem letu v Sloveniji premalo primerov, smo leta 1992 izdali še posebno publikacijo za desetletno obdobje, *Zemljevidi incidence raka v Sloveniji, 1978-1987*. Leta 1995 pa je izšla s slovensko-angleškim

besedilom knjiga *Preživetje bolnikov z rakom v Sloveniji 1963-1990*. Barvne slike in tabele s podatki o pričakovnem, opazovanem in relativnem preživetju bolnikov z rakom v šestih časovnih obdobjih spremljajo komentarji klinikov-onkologov. Knjigo še lahko kupite v Registru raka po sponzorirani ceni 3000 SIT (študenti 1500 SIT). Lahko pa jo naročite tudi s priloženo naročilnico.

GRADIVO IN POJASNILA

Podatke dobivamo iz posebnih Prijavnic rakave bolezni iz vseh bolnišnic in diagnostičnih centrov v Sloveniji. Dopolnjujemo jih še z zdravniškimi poročili o vzroku smrti in s podatki iz obdukcijskih zapisnikov, v katerih je navedena diagnoza rak ter s prijavnici iz zdravstvenih domov.

Incidenca pomeni število vseh v enem koledarskem letu na novo ugotovljenih primerov raka, ki jih Registru prijavljajo bolnišnice (tudi če je bila diagnoza rak ugotovljena šele pri obdukciji) ali zdravstveni domovi (v primeru, če bolnik ni bil napoten v bolnišnico), plus število v istem letu umrlih, pri katerih je bil rak ugotovljen šele ob smrti in so prišli v evidenco Registra samo na podlagi zdravniškega poročila o vzroku smrti. V incidenco ne štejemo novih primarnih rakov parnega organa iste lokacije, če je bila histološka vrsta obeh rakov, npr. leve in desne dojke, enaka. Prav tako v incidenco ne štejemo novega pojava raka iste histološke vrste na istem organu, npr. multiple lezije v debelem črevesu. Tabele prikazujejo podatke o prebivalcih in incidenci raka v Sloveniji v letu 1993 po spolu, starosti, lokaciji, histološki vrsti in stadiju bolezni ob diagnozi ter o incidenci po zdravstvenih regijah in območjih zdravstvenih domov, kot tudi podatke o številu novih primerov raka, ugotovljenih v tem letu po posameznih bolnišnicah. Zbiranje podatkov smo zaključili 26. aprila 1996. Njihovo zanesljivost osvetljuje dva kazalca: odstotek primerov raka, registriranih samo iz zdravniških poročil o vzroku smrti (tabela 3), in odstotek mikroskopsko (histološko ali citološko) potrjenih primerov (tabela 7).

Slike 1-3 prikazujejo tiste podatke, ki naše uporabnike največkrat zanimajo: to je najpogostnejše lokacije raka po spolu ter trendi incidence vseh in izbranih rakov po spolu.

S slikami 4-8 želimo podrobneje pojasniti, zakaj je tudi v Sloveniji potreben načrtovan državni program presejanja za raka materničnega vratu. Na splošno se incidenca invazivne oblike od leta 1978 dalje ni zmanjšala, v starosti 35-44 let se je celo povečala. S starostjo stadiji rastejo, relativno preživetje je manjše. Pri nobeni drugi rakavi bolezni ni odvisnost relativnega preživetja od starosti tako izrazita (*Preživetje bolnikov z rakom 1963-90, 1995*).

V letu 1993 smo uvedli obvezno prijavljanje vseh sprememb materničnega vratu označenih kot CIN III. V tabelah 3-7 tako letos prvič navajamo število vseh primerov, prijavljenih kot CIN III. Mednje so šteti tudi tisti, ki so bili označeni kot intraepitelijski in so bili v preteklih letih navedeni v teh tabelah pod šifro 2340. Število vseh primerov CIN III je dvakrat večje od števila primerov, prijavljenih kot intraepitelijski karcinom. Primerjava s podatki iz preteklih let tako ni možna.

Zanesljivost podatkov za leto 1993, 3 % primerov, registriranih samo s pomočjo zdravniških poročil o vzroku smrti (tabela 3), je taka kot v preteklih 10 letih. 3 % so realen delež rakavih bolnikov, ki v Sloveniji zaradi starosti in/ali napredovale bolezni ni bil preiskovan in zdravljen v bolnišnici.

V tabeli 4 navedeno število zbolelih otrok je mejah pričakovanega.

Tabela 5 prikazuje incidenco na 100 000 prebivalcev. Število vseh novih primerov raka iz leta 1993 je preračunano na število prebivalcev R Slovenije na dan 30. junija tega leta (tabela 1). To je t.i. groba incidenčna mera. Starostno standardizirane incidenčne mere pa izločajo vpliv razlik v starostni strukturi prebivalstva v posameznih letih obdobja opazovanja, v našem primeru staranja prebivalcev R Slovenije v letih 1950-93. Na sliki 2 prikazujemo starostno standardizirane podatke po Dayevi metodi izračuna kumulativne incidence od 0. do vključno 74. leta starosti na 100 prebivalcev. Stare metode direktne in indirektno standardizacije so sicer še v rabi, vendar imajo to slabo lastnost, da dajejo pri velikih razlikah med opazovano in standardno populacijo nerealne (navidezno prevelike ali premajhne) vrednosti tako izračunanih incidenčnih mer (*Cancer Incidence in Five Continents, Vol. 5, 1987: 787-789*). Kumulativna incidenčna mera na 100 prebivalcev je petkratna vsota starostno

specifičnih incidenc na 100 prebivalcev posameznih petletnih starostnih skupin. Day jo opredeljuje kot direktno, na dejansko populacijo posamezne petletne starostne skupine standardizirano incidenco. Tolmačimo si jo kot tveganje, ki ga ima novorojenček, da do 75. leta starosti zbolí za rakom. Kumulativna incidenca 5,42/100 za raka dojk pri ženskah pomeni npr., da bo 5,42 % novorojenk do 75. leta starosti verjetno zbolelo za rakom dojk. Razred velikosti kumulativnih incidenčnih mer na 100 prebivalcev je drugačen kot pri grobih incidenčnih merah na 100 000 prebivalcev. Primerjava oblike krivulj nam kaže, da lahko staranju našega prebivalstva pripišemo naraščanje raka predvsem pri ženskah, medtem ko pri moških očitno k temu prispevajo še drugi dejavniki tveganja.

Na različno starostno strukturo območij zdravstvenih regij moramo pomisliti tudi pri uporabi in razlagi podatkov tabele 6. Njen prvoten namen je bil prikazati število novozbolelih za operativne namene načrtovanja zmogljivosti in sredstev zdravstvenega varstva na območjih zdravstvenih regij. Tako v tej tabeli prikazujemo tudi podatke o številu novih primerov CIN III. Za druge namene, predvsem za iskanje vzrokov takšnega ali drugega pojavljanja raka, je treba podatke najprej starostno standardizirati. Kako vpliva različna starostna struktura na incidenčne mere, je razvidno iz že omenjene knjige *Zemljevidi incidence raka v Sloveniji*, ki prikazuje tako grobe kot kumulativne incidenčne mere za vse in najpogostejše rake po območjih bivših občin.

Lokacije raka smo šifrirali po 8. reviziji *Mednarodne klasifikacije bolezni* (MKB-8). Po tej klasifikaciji smo uvrstili med šifre 196-199 tiste primere raka, pri katerih primarne lokacije ni bilo mogoče ugotoviti. Takšni primeri z metastazami v bezgavkah so npr. uvrščeni v šifro 196. Osmo revizijo uporabljamo zaradi možne primerjave podatkov v tem poročilu s poročili od vključno 1970. leta dalje.

V tabelah 7 in 8 je navedeno število vseh mikroskopsko, to je histološko ali citološko potrjenih novih primerov raka. V tabeli 8 so ločeno navedeni primeri, ki so histološko potrjeni, in tisti, ki so potrjeni samo citološko (ti primeri so navedeni v oklepaju). Vsota vseh je enaka številu vseh mikroskopsko potrjenih primerov, navedenem v tabeli 7. Histološke vrste v tabeli 8 so šifrirane po 2. reviziji šifranta ICD-O (WHO, 1991). Združili smo jih v smiselne skupine za namene tega poročila. To pa ne izključuje individualne obdelave po katerikoli šifri navedenega šifranta ICD-O, npr. izpisa redkih histoloških vrst, kot so Burkittovi limfomi. Iz te tabele lahko razberemo tudi primarne lokacije ektranodalnih malignih limfomov in njihovo število. Ektranodalni maligni limfomi so namreč dosledno uvrščeni med ustrezne šifre primarne lokacije raka.

Starostno porazdelitev ektranodalnih in nodalnih lokacij ne-Hodgkinovih malignih limfomov kaže tabela 9. Zaradi majhnega števila prikazujemo le absolutna števila.

V tabeli 10 so navedene klinike in bolnišnice prve prijave rakave bolezni.

Tabela 11 prikazuje stadije ob ugotovitvi bolezni. Opredelitev stadijev solidnih tumorjev ne sledi pravilom *klasifikacije TNM*, ampak dogovorjenim pravilom registrov raka, ki pri opredeljevanju stadija upoštevajo vse preiskovalne metode, vključno operacijo; če bolnik ni bil predhodno zdravljen, pa tudi obdukcijo. Maligni limfomi so opredeljeni po klasifikaciji *Ann-Arbor*. Podobno kot za histološke vrste je možen tudi izpis podatkov po *klasifikaciji TNM*, v kolikor so bili podatki ustrezno šifrirani na prijavnica oziroma že v popisih bolezni.

V tabele so vključeni le podatki o bolnikih, ki imajo stalno bivališče na območju Republike Slovenije, ne glede na to, kje so bili zdravljeni.

ZAHVALA

Zahvaljujemo se vsem zdravnikom, medicinskim sestram in administrativnemu osebju, ki so nam vestno in redno pošiljali podatke o novozbolelih rakavih bolnikih in njihovi nadaljnji usodi. Prav posebej se zahvaljujemo sodelavkam Bolnišničnega registra Onkološkega inštituta v Ljubljani: Ani Dotzauer, Boži Kolar, Maruški Ferjančič in Nadi Jamšek, ki so z vodenjem evidence in s skrbnim izpisovanjem in šifriranjem podatkov iz popisov bolezni prispevale vsaj polovico v tem poročilu obdelanih podatkov.

Vera Pompe Kirn

Ljubljana, 1. 5. 1996

INTRODUCTION

The Cancer Registry of Slovenia (Registry) was founded in 1950 at the Institute of Oncology in Ljubljana, on the initiative and under the leadership of Prof. Božena Ravnihar, MD, as a special service for collecting and processing data on cancer incidence and cancer patients' survival. Since then notification of cancer has been compulsory in Slovenia (*Official Gazette of SRS*, No. 10/50, No. 29/50, No. 14/65, No. 1/80, No. 45/82, No. 42/85, and *Official Gazette of RS*, No. 9/92). Detailed definition on this is given in the Regulations on notification and follow-up of cancer patients and other technical aspects of anticancer activities. (*Official Gazette of SRS*, No. 4/66).

Cancer incidence in the world varies greatly. The Republic of Slovenia also shows its specific cancer incidence pattern. The collected data serve as a basis for the assessment of cancer burden, for programming and evaluation of primary prevention, detection, diagnosis, treatments, rehabilitation, for planning facilities and funding needed for cancer control, hospital capacities and equipment, as well as for clinical and epidemiological research in Slovenia and in different multicentric international projects.

The existence of a population-based cancer registry is justified only by regular processing and publication of the collected data. The Registry's Annual Reports represent a permanent feed-back information. Because of many different data sources and data contributors, almost all cancer registries practise at least a two year period delay before publishing.

The first analysis of data for 1950 was published in *Zdravstveni vestnik* in 1951, whereas the first annual reports of the Registry for the period 1951-1955 were issued during the years 1953-1957. The data for the period 1957-1971 appeared in periodicals edited by World Health Organization - *Epidemiological and Vital Statistics Report*, Vol. 14, No. 11, 1961; Vol. 16, No. 12, 1963; Vol. 17, No. 12, 1964; Vol. 19, No. 12, 1966; Vol. 20, No. 12, 1967), as well as in *World Health Statistics Report* (Vol. 23, No. 3, 1970; Vol. 24, No. 2, 1971; Vol. 25, Nos. 4, 5, 1972; Vol. 26, No. 8, 1973; Vol. 27, Nos. 6, 7, 1974). The data from 1965 on have again appeared regularly in special annual reports, first entitled *Cancer in Slovenia* (1965-1977), and afterwards *Cancer Incidence in Slovenia* (1978-1992); the publication appears in Slovene and English. Our constant endeavours are directed into further improvement of these publications, taking into account the requests and comments of the users. In this, the support of our editorial board consisting of experts - oncologists of different specialities (i.e. clinicians, epidemiologists and a pathologist) proves to be very helpful.

Our Registry is one of the oldest services of this type in Europe. Before 1950, population-based cancer registries existed only in Hamburg (Germany), Denmark, Great Britain, Belgium and in the former Soviet Union. Therefore, our data on cancer incidence are interesting for a wide circle of professionals abroad. In 1957, the first comprehensive report in English for the period 1950-1955 entitled *Cancer in Slovenia* was issued (B. Ravnihar, A. Valentin, T. Božič, J. Doič, D. Pečirer). The data for periods 1956-1960, 1961-1965, 1968-1972, 1973-1976, 1978-1981, 1982-1987 were reported in all six volumes of the publication *Cancer Incidence in Five Continents* issued by UICC, Geneva (Vol. 1, 1966, eds. Doll R., Payne P., Waterhouse J.; Vol. 2, 1970, eds. Doll R., Muir C., Waterhouse J.), and IARC, Lyon (Vol. 3, 1976, eds. Waterhouse J., Muir C., Correa C., Powell J.; Vol. 4, 1982, eds. Waterhouse J., Muir C., Shanmugaratnam K., Powell J.; Vol. 5, 1987, eds. Muir C., Waterhouse J., Mack T., Powell J., Whelan S.; Vol. 6, 1992, eds. Parkin M., Muir C., Whelan S., Gao Y., Ferlay J., Powell J.). Volume seven with data for the period 1988-1992 is being prepared. The data on cancer incidence and mortality for the years 1983-1990 are also included in EUROCIM, the data base of the *Network of European cancer registries*, maintained by the European Commission of *Europe Against Cancer* program, and IARC (*International Agency for Research on Cancer*). In 1993 we started to perform computer data analyses with the Oracle relational data base support on our own *Unix - Silicon Graphics IRIS4D/310S* server. This facilitates detailed analyses of the collected data, in accordance with the current problems in Slovenia, as well as with respect to our research program and individual needs of our users. These data are published in the national and foreign medical literature and in the daily print, when necessary. In 1992, a special publication covering a ten-year period, *Atlas of Cancer Incidence in Slovenia, 1978-1987* was published. In 1995, a book entitled "Cancer patients in Slove-

nia, 1963-1990" with Slovene-English text was published. The color pictures and tables presenting the data on expected, observed and relative survival of cancer patients in 6 time periods are explained by clinicians-oncologists' comments. The book can still be purchased in the Cancer Registry at a reduced price of 3000 SIT (students 1500 SIT), or it can be ordered by the enclosed order form.

MATERIAL AND COMMENTS

The main sources of data are notifications gathered from all hospitals and diagnostic centers in Slovenia. This information is completed by death certificates and autopsy protocols stating cancer diagnosis, and by notifications from regional health centres.

Incidence represents the number of newly diagnosed cancer cases reported to the Registry in a given calendar year by regional hospitals (also if the diagnosis of cancer was established on autopsy only) or regional health centres (in the cases when the patient has not been referred to hospital), as well as of cases brought to the attention of the Registry only on the basis of death certificates. New primary cancers of the same histology in paired organs were not comprised in the incidence figures, neither were any new cancers of the same histology appearing in the same organ, e.g. multiple lesions of the colon. In tables, data on population and on cancer incidence in Slovenia in 1993 by sex, age, site, histologic type, stage at diagnosis, health regions and health centre districts, and by reporting hospitals are presented. Data were collected till April 26, 1996. Their reliability is indicated by two parameters, i.e. the percentage of cancer cases registered from death certificates alone (Table 3), and the percentage of microscopically (histologically or cytologically) confirmed cases (Table 7).

Figures 1-3 present the data our readers are most frequently interested in: the most frequent cancer sites by sex, and the incidence trends for all and selected sites by sex.

Figures 4-8 provide a detailed explanation why an organized national program of screening for cervical cancer is needed in Slovenia. On the whole, since 1978, the incidence of invasive cervical cancer has not decreased; moreover, in the age group 35-44 it was even found to have increased. By advancing age, stages grow higher while the relative survival becomes shorter. No other type of cancer shows such a marked correlation between the relative survival and age (Cancer patients survival in 1963-90, 1995).

In 1993, compulsory registration of all cervical intraepithelial displasias classified as CIN III was introduced. Thus, in the present report for the first time the number of all CIN III cases reported is given in Tables 3-7. CIN III include also the types classified as intraepithelial cancers, previously listed in these tables under the code 2340. The number of all CIN III cases is twofold that of the cases reported as intraepithelial carcinomas. Therefore, any comparison with the data for past years is not possible.

The reliability of data for 1993, 3% of cases registered only from death certificates (Table 3), was the same as that registered in the past ten years. It is believed that the 3% of cancer patients registered in Slovenia only on the basis of death certificates is a realistic percentage of cancers that failed to be diagnosed and/or treated at hospital owing to the patients' advanced age or stage of the disease.

The number of childhood cancer cases presented in table 4 was within the limits of values expected.

Incidence per 100 000 population is presented in Table 5. It has been calculated from the number of inhabitants of Slovenia on June 30, 1993 (Table 1). This is the crude incidence rate. In age standardized incidence rates (Figure 2), the influence of the differences in population age structure in the period of observation has been excluded (the aging of the Slovene population in the period 1950-93). They were calculated according to the Day's method for cumulative incidence calculation from 0 to 74 years of age per 100 population (*Cancer Incidence in Five Continents*, Vol. 5, 1987: 787-789). Cumulative incidence represents five times the sum of the age-specific incidence rates in 5-year age groups. Day interprets it as a directly standardized incidence rate with the same population size in each age group or as an approximation to the cumulated risk. It represents a newborn's risk of developing cancer by his 75th year of age. Thus, the cumulative incidence of 5.24 / 100 for breast cancer in females means that 5.24 % of female newborns are expected to develop breast cancer till their 75th year of age. The cumulative incidence figures differ from those of crude incidence per 100 000 population. The comparison of crude and age-standardized incidence curves (Figure 2) indicates that the increasing crude cancer in-

idence rate in females can be attributed to the aging of population, whereas in males obviously additional risk factors should be considered as well.

When using and interpreting the data in Table 6, different age structure in regional health centre districts and administrative health-regions should be taken into account. The table has been originally designed to present the number of newly diagnosed cancers, as needed for planning of facilities and funding of health care in the regions and health centre districts. Therefore, in this table the data on all new CIN III cases by health centres are presented. When used for other purposes, particularly for the search of possible risk factors of different cancers, the data require previous age standardization. The influence of different age structures on the incidence rates is evident also from maps drawn in the mentioned *Atlas of Cancer Incidence in Slovenia, 1978-1987*, presenting crude as well as cumulative incidence rates for all and most frequent cancers by communes.

Primary cancer sites were coded according to the 8th revised edition of *International Classification of Diseases (ICD-8)*. Thus, the cancer cases with unknown primary site were coded 196-199; e.g. such cases with lymph node metastases were classified under code 196. The 8th revision has been used in order to enable a comparison of data in the present report with those reported from the year 1970 on.

The number of all microscopically, i.e. histologically and/or cytologically confirmed new cancer cases is presented in Table 7. In Table 8 histologically and cytologically verified cases are presented separately. The cytologically verified cases are given in brackets. The sum of histologically and cytologically verified cases in Table 8 equals the number of microscopically verified cases in Table 7.

Histologic types in Table 8 are coded according to the 2nd revision of ICD-O (WHO, 1991). For the purpose of this report, some rare cancers have been grouped together. This, however, does not exclude individual processing by any ICD-O code, e.g. outprint of rare histologic types such as Burkitt lymphomas. The table also provides information on primary sites of extranodal malignant lymphomas and their number, as the extranodal are strictly categorized among primary sites by corresponding codes.

In Table 9, age distribution of extranodal and nodal sites of non-Hodgkin malignant lymphomas is presented. Owing to a small number of extranodal sites only the absolute numbers are given.

In table 10 university and general hospitals of first admission of cancer patients are cited.

Table 11 shows stages of the disease at diagnosis. Solid tumor stage is not classified according to TNM classification system, but by cancer registries regulations according to which all investigation methods incl. surgery are considered in stage determination. In the case that the patient was not treated previously, autopsy report is considered as well. Malignant lymphomas are classified according to Ann-Arbor system. As for the histologic type, outprint of data by TNM classification is possible as well, provided that the data were correctly coded in patient records as well as on notification forms.

The data presented in tables refer only to patients, residents in Slovenia, irrespective of their place of treatment.

ACKNOWLEDGMENT

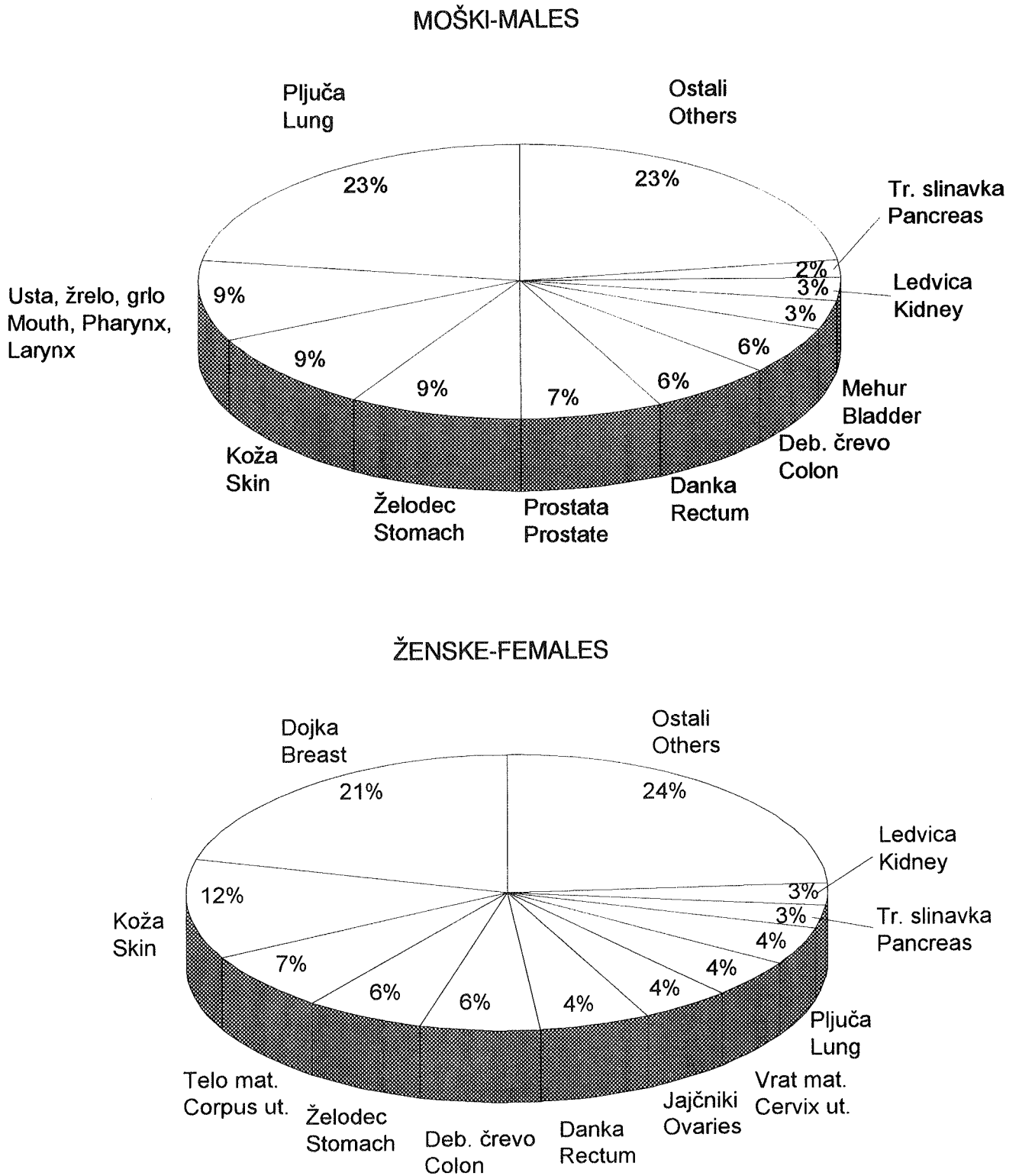
We thank to the physicians, nurses and administrative staff who have provided the data on new cancer patients and their further history. We owe special thanks to the coworkers of the Hospital Registry of the Institute of Oncology, Mrs. Ana Dotzauer, Boža Kolar, Maruška Ferjančič, and Nada Jamšek, whose accurate evidence keeping, registration and coding of data from patients records have contributed more than a half of the information presented in this report.

Vera Pompe Kirn

Ljubljana, May 1, 1996

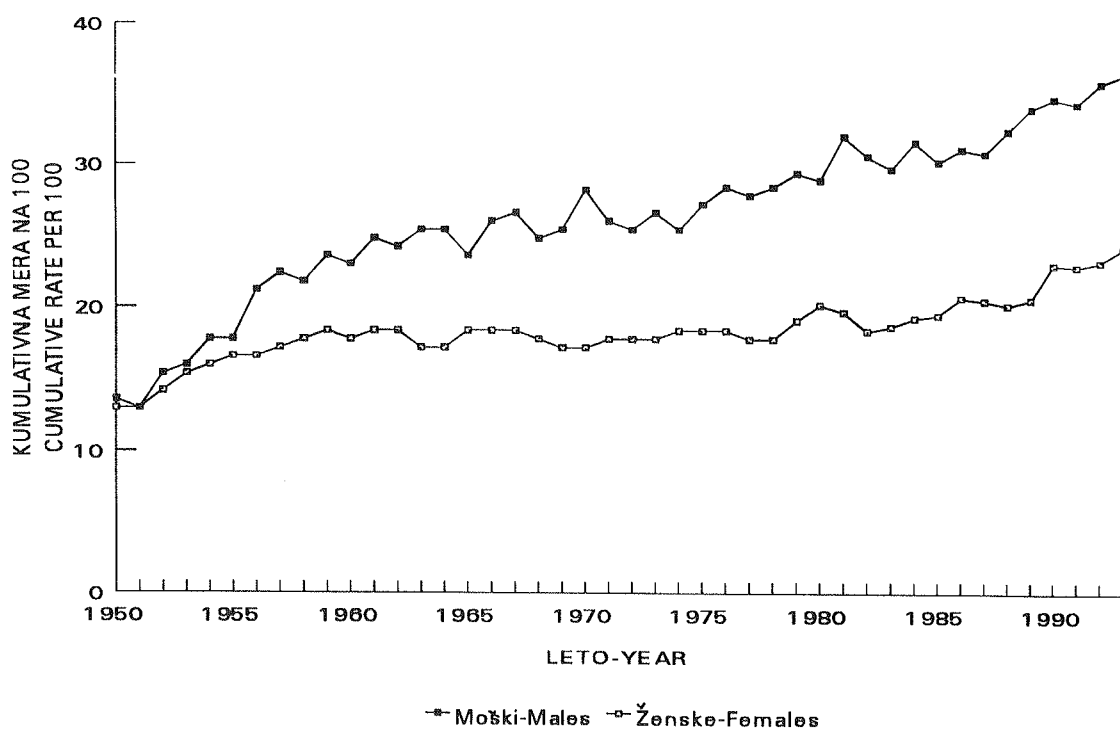
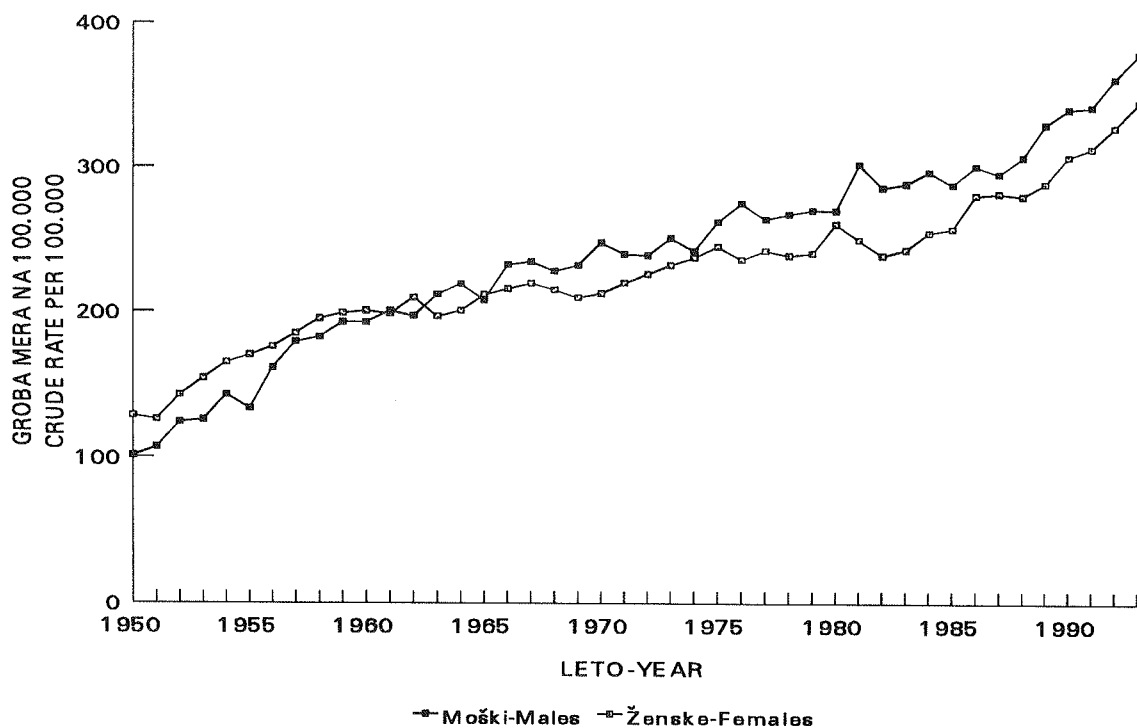
Slika 1. Najpogostejše lokacije raka po spolu - Slovenija 1993

Figure 1. The leading cancer sites by sex - Slovenia 1993



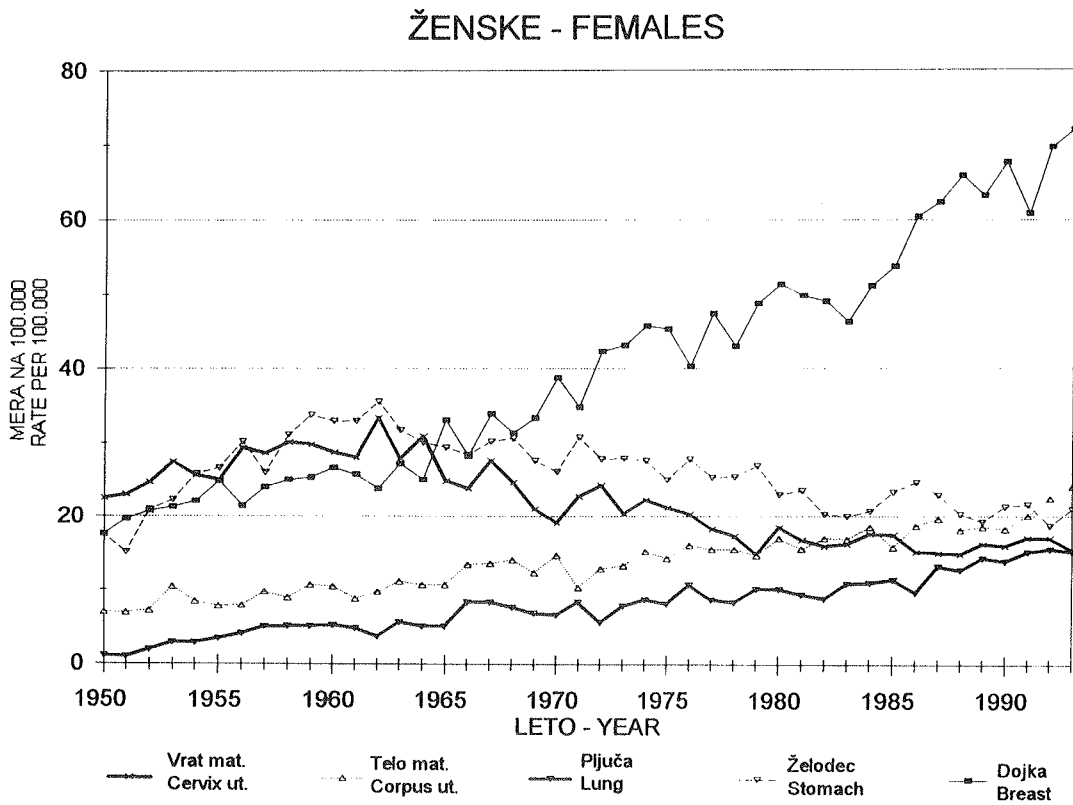
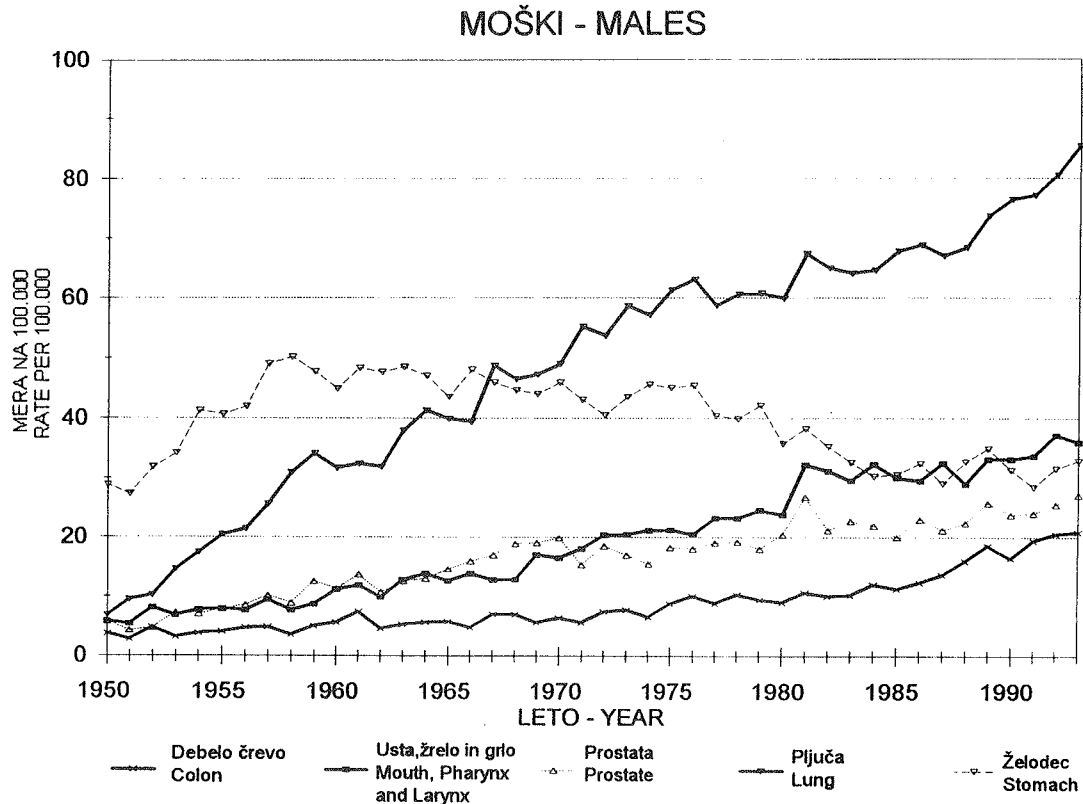
Slika 2. Groba in kumulativna letna incidenca raka vseh lokacij po spolu - Slovenija 1950-1993

Figure 2. Crude and cumulative annual cancer incidence; all sites by sex - Slovenia 1950-1993



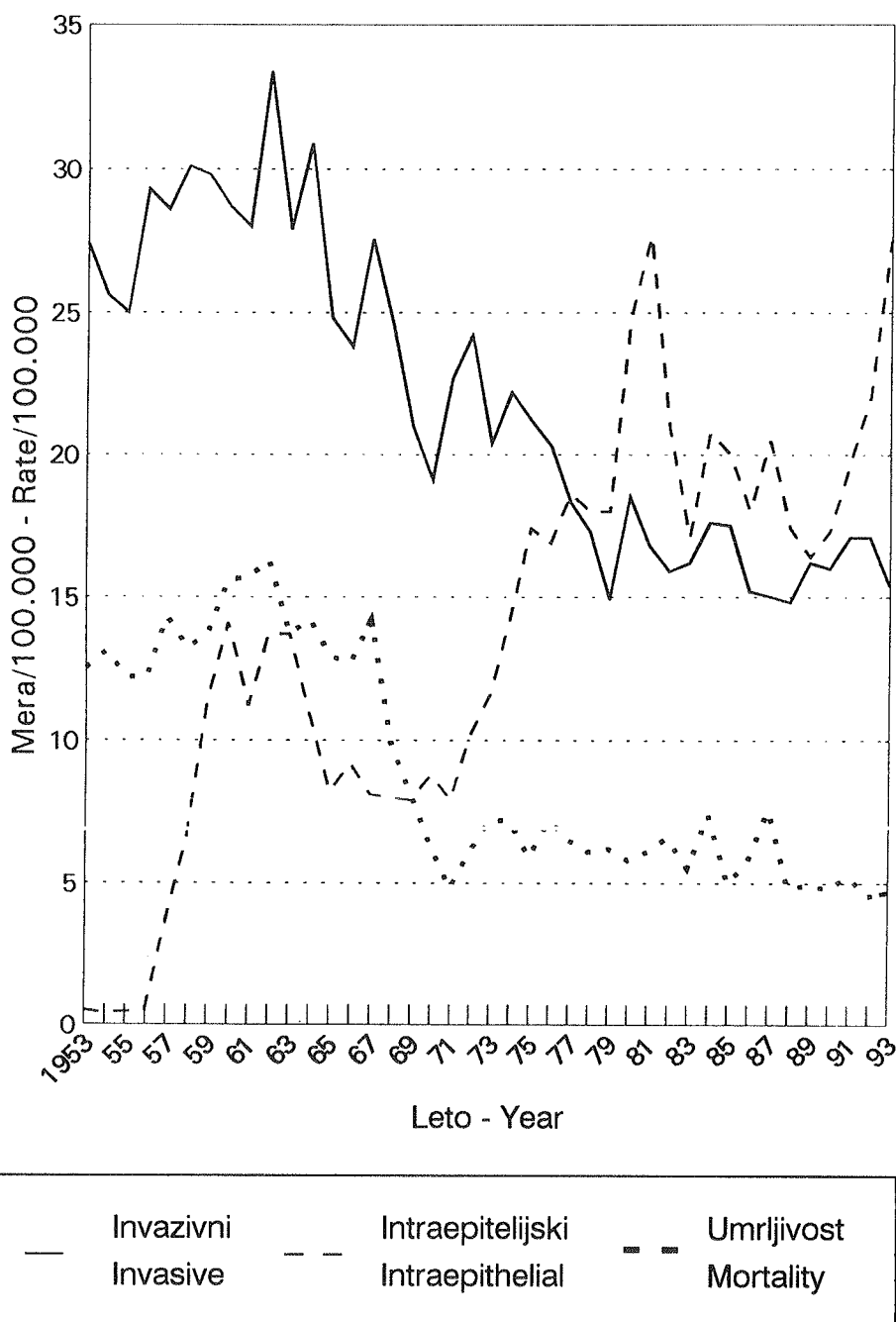
Slika 3. Groba letna incidenca izbranih rakov po spolu - Slovenija 1950-1993

Figure 3. Crude annual cancer incidence by selected primary sites and sex - Slovenia 1950-1993



Slika 4. Letna incidenca intraepitelijske in invazivne oblike ter umrljivost zaradi karcinoma materničnega vratu - Slovenija 1953-93

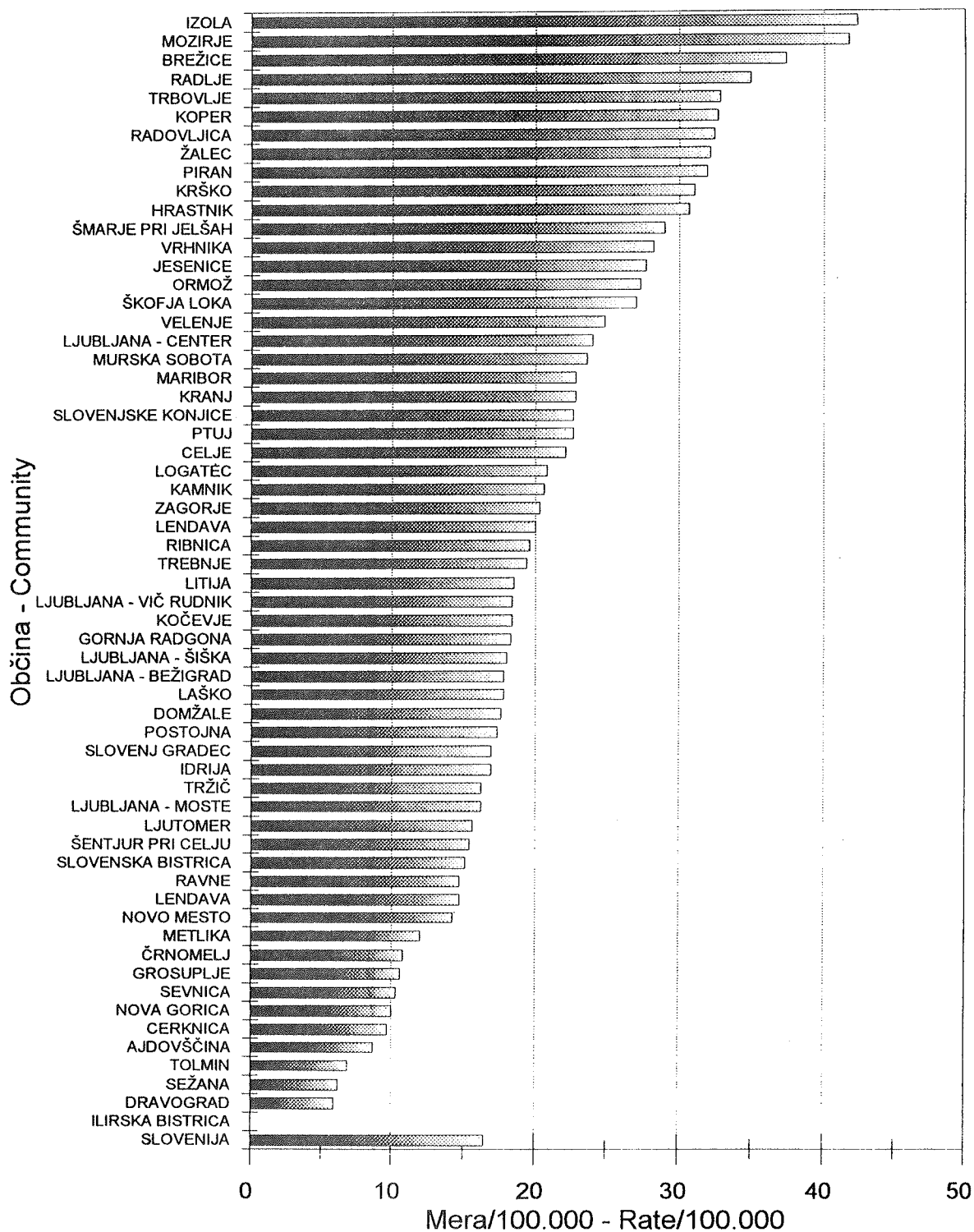
Figure 4. Annual incidence of intraepithelial and invasive, and mortality of cervical carcinoma - Slovenia 1953-93



* Vir podatkov: Inštitut za varovanje zdravja RS in Kovačič J (doktorsko delo)
 Source of data: Institute of Public Health of the RS, and Kovačič J (PhD Thesis)

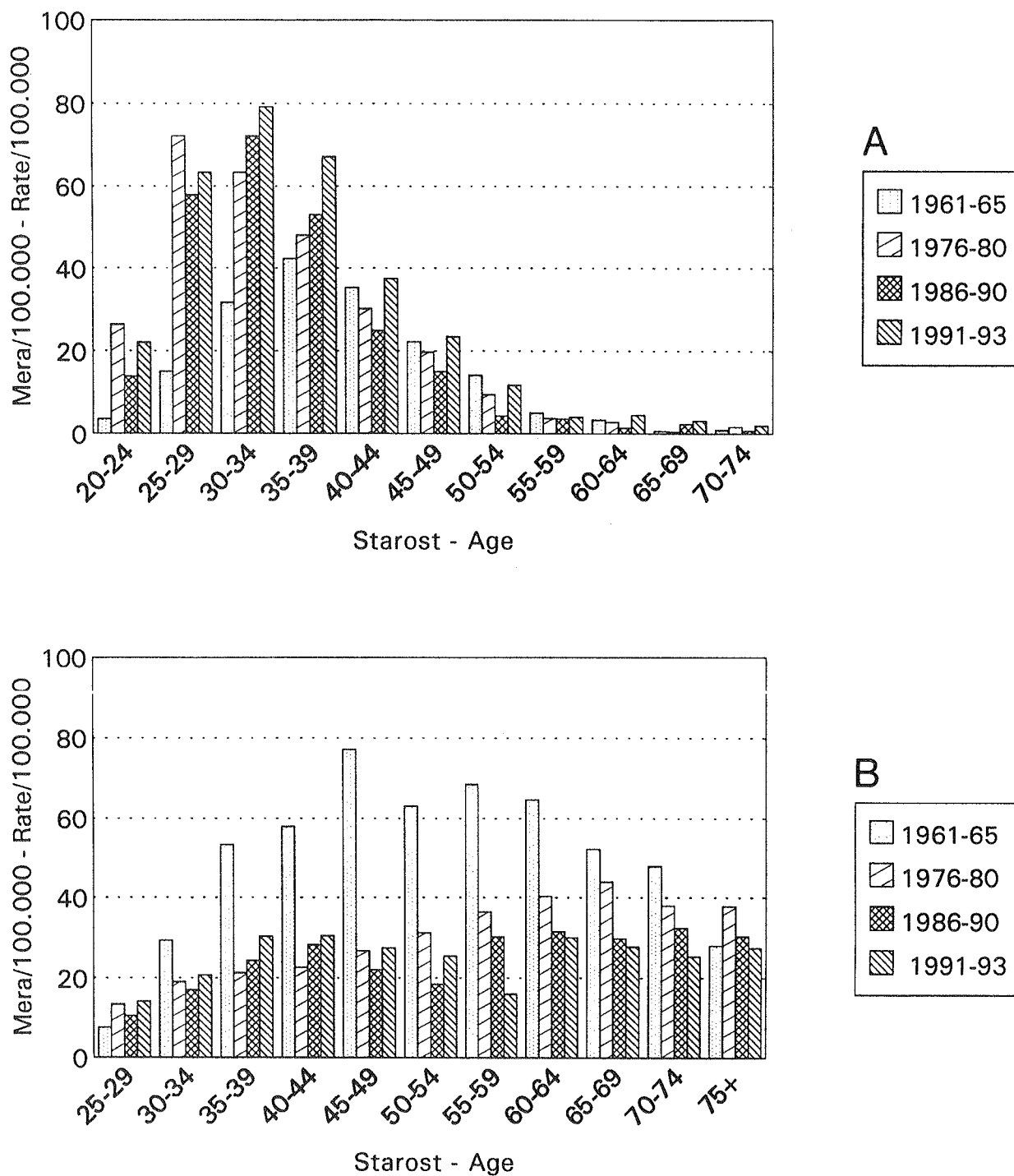
Slika 5. Povprečna letna incidenca invazivne oblike karcinoma materničnega vratu po območjih občin - Slovenija 1989-93

Figure 5. Average annual invasive cervical carcinoma incidence by communities - Slovenia 1989-93



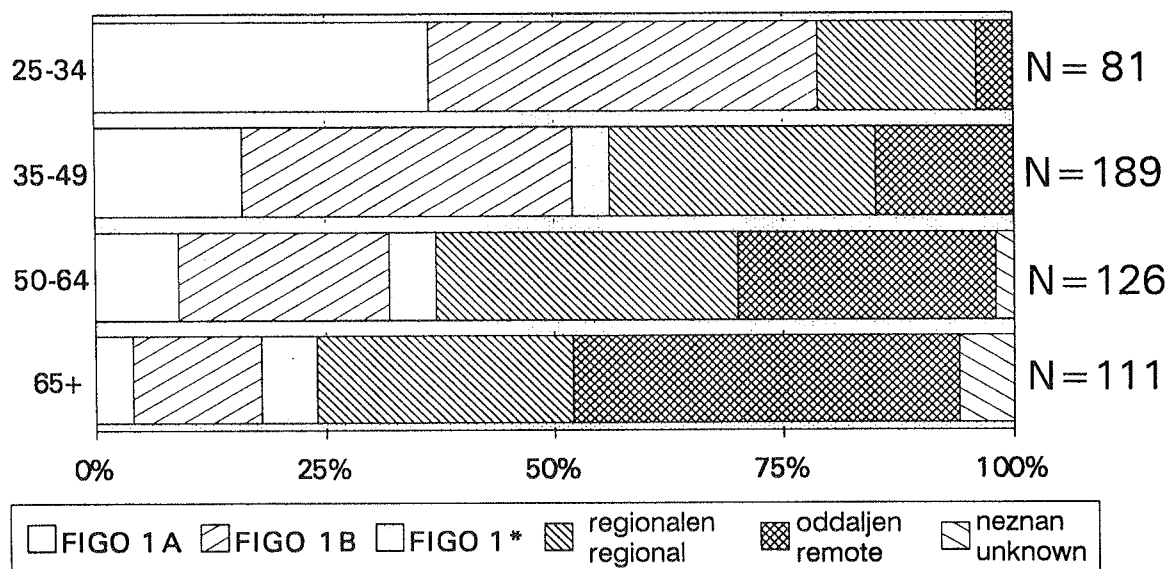
Slika 6. Starostno specifična incidenca intraepitelijske (A) in invazivne oblike (B) karcinoma materničnega vratu - Slovenija 1961-93

Figure 6. Age-specific intraepithelial (A) and invasive (B) cervical carcinoma incidence - Slovenia 1961-93



Slika 7. Porazdelitev stadijev invazivnega karcinoma materničnega vratu po starosti - Slovenija 1991-93

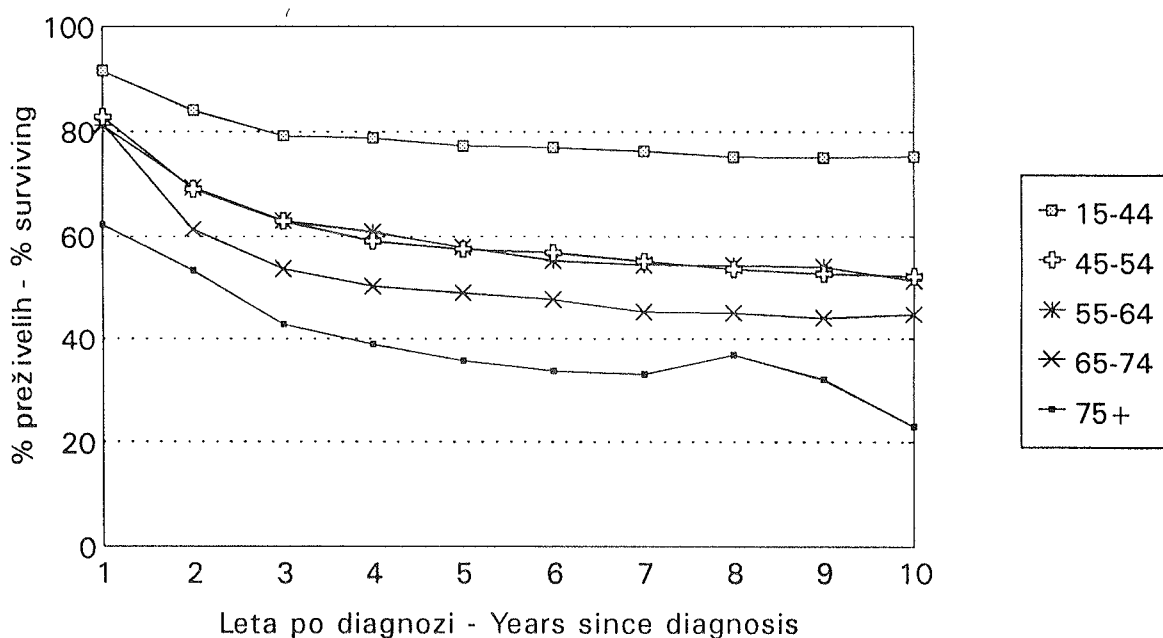
Figure 7. Stage distribution of invasive cervical carcinoma by age - Slovenia 1991-93



* FIGO 1 neopredeljen - FIGO 1 not classified

Slika 8. Relativno desetletno preživetje bolnic s karcinomom materničnega vratu po starosti - Slovenija 1983-87

Figure 8. Relative ten-year survival of cervical carcinoma patients by age - Slovenia 1983-87



Mesec dni po izdaji velike knjige o preživetju bolnikov z rakom v Evropi je na podlagi podatkov Registra raka za Slovenijo izšla tudi knjiga PREŽIVETJE BOLNIKOV Z RAKOM V SLOVENIJI (avtorji V. Pompe-Kirn, B. Zakotnik, N. Volk, T. Benulič in J. Škrk). Z barvnimi slikami in tabelami je predstavljeno pričakovano, opazovano in relativno preživetje bolnikov z rakom v letih 1963-90. Pri pisanju spremnega besedila je sodelovalo 18 klinikov-onkologov, ki že vrsto let zdravijo bolnike z rakom v Sloveniji. Knjiga je izšla 5. junija 1995.

Knjiga je na voljo po subvencionirani ceni 3000 SIT. Kupite jo lahko v Registru raka za Slovenijo na Onkološkem inštitutu v Ljubljani, Zaloška 2 (III. nadstropje stavbe C), če pa izpolnite in nam pošljete spodnjo naročilnico, vam knjigo pošljemo s plačilom po povzetju.

*Registru raka za Slovenijo
Onkološki inštitut
1000 Ljubljana
Zaloška c. 2*

NAROČILNICA

Prosim, da na naslov

.....
.....
.....
.....

pošljete po povzetju
..... izvod(ov) knjige

PREŽIVETJE BOLNIKOV Z RAKOM V SLOVENIJI, 1963-1990

V....., dne.....

Podpis (in žig)

Tabela 1. Prebivalstvo Slovenije po starosti in spolu na dan 30. 6. 1993***Table 1. Population of Slovenia by age and sex on June 30th, 1993***

<i>Starost Age</i>	<i>Skupaj Total</i>	<i>Moški Males</i>	<i>Ženske Females</i>
0 - 4	108 526	55 811	52 715
5 - 9	129 109	66 040	63 069
10 - 14	146 885	75 339	71 546
15 - 19	148 936	76 463	72 473
20 - 24	141 368	71 537	69 831
25 - 29	152 925	75 945	76 980
30 - 34	154 159	77 370	76 789
35 - 39	162 168	82 539	79 629
40 - 44	157 729	80 993	76 736
45 - 49	120 215	61 145	59 070
50 - 54	119 517	59 674	59 843
55 - 59	111 125	53 710	57 415
60 - 64	107 769	48 477	59 292
65 - 69	86 873	33 348	53 525
70 - 74	60 302	20 845	39 457
75 - 79	33 469	11 399	22 070
80 in več 80 and over	49 548	14 540	35 008
Vse starosti Total	1 990 623	965 175	1 025 448

* Vir: *Statistične informacije*, št. 265/1993, Zavod R Slovenije za statistiko, Ljubljana, 2. november 1993
 Source: *Statistične informacije*, No. 265/1993, Zavod R Slovenije za statistiko, Ljubljana, November 2, 1993

Tabela 2. Prebivalstvo Slovenije po zdravstvenih regijah in območjih zdravstvenih domov po spolu na dan 30. junija 1993*

Table 2. Population of Slovenia by health regions and subregions by sex on June 30th, 1993*

<i>Zdravstvena regija</i> <i>Health region</i>	<i>Skupaj</i> <i>Total</i>	<i>Moški</i> <i>Males</i>	<i>Ženske</i> <i>Females</i>
Celje	242 061	117 703	124 358
Gorica	102 839	50 140	52 699
Koper	135 520	66 276	69 244
Kranj	194 472	94 149	100 323
Ljubljana	592 643	283 914	308 729
Ljubljanske občine	328 841	155 224	173 617
Maribor	325 563	157 965	167 598
Občina Maribor	153 251	73 300	79 951
Murska Sobota	130 535	63 565	66 970
Novo mesto	133 173	65 244	67 929
Ravne	133 817	66 219	67 598
R Slovenija skupaj Total	1 990 623	965 175	1 025 448

* Vir: *Statistične informacije*, št. 265/1993, Zavod R Slovenije za statistiko, Ljubljana, 2. november 1993
 Source: *Statistical information*, No. 265/1993, Zavod R Slovenije za statistiko, Ljubljana, November 2, 1993

Tabela 3. Število novih primerov raka ter število in odstotek primerov, registriranih samo iz zdravniških poročil o vzroku smrti, po lokaciji in spolu - Slovenija 1993

Table 3. Total number of new cancer cases and number and percentage of cases registered from death certificates only, by site and sex - Slovenia 1993

<i>Šifra MKB*</i>	<i>Primarna lokacija</i>	<i>Spol</i>	<i>Število novih primerov</i>	<i>Registrirani samo iz zdravniških poročil o vzroku smrti</i>	
<i>ICD* No.</i>	<i>Primary site</i>	<i>Sex</i>	<i>Number of new cases</i>	<i>Registered from death certificates only Number</i>	<i>Odstotek** Per cent**</i>
140	Vse lokacije	Skupaj	7 195	226	3
-	All sites	Total			
209		Moški	3 658	110	3
		Male			
		Ženske	3 537	116	3
		Female			
140	Ustnica	M	25	-	-
	Lip	Ž	5	-	-
141	Jezik	M	27	-	-
	Tongue	Ž	9	-	-
142	Slinavke	M	4	-	-
	Salivary glands	Ž	6	-	-
143	Dlesni	M	5	-	-
	Gum	Ž	2	-	-
144	Ustno dno	M	41	-	-
	Floor of mouth	Ž	4	-	-
145	Usta, drugo	M	26	-	-
	Mouth, other parts	Ž	5	-	-
146	Orofarinks	M	106	1	1
	Oropharynx	Ž	9	-	-
147	Epifarinks	M	7	-	-
	Epipharynx	Ž	5	-	-
148	Hipofarinks	M	50	-	-
	Hypopharynx	Ž	5	-	-
149	Žrelo, neoznačeno	M	-	-	-
	Pharynx, not specified	Ž	-	-	-
150	Požiralnik	M	67	1	1
	Esophagus	Ž	9	2	-
151	Želodec	M	318	19	6
	Stomach	Ž	215	19	9
152	Tanko črevo	M	8	-	-
	Small intestine	Ž	4	-	-

cont. ↓

Tabela 3. Nadaljevanje - continued

<i>Šifra MKB*</i>	<i>Primarna lokacija</i>	<i>Spol</i>	<i>Število novih primerov</i>	<i>Registrirani samo iz zdravniških poročil o vzroku smrti</i>	
<i>ICD* No.</i>	<i>Primary site</i>	<i>Sex</i>	<i>Number of new cases</i>	<i>Število</i>	<i>Odstotek**</i>
				<i>Registered from death certificates only</i>	<i>Number</i>
					<i>Per cent**</i>
153	Debelo črevo	M	202	7	3
	Colon	Ž	213	11	5
154	Rektum	M	229	10	4
	Rectum, anus	Ž	199	8	4
155	Jetra	M	36	-	-
	Liver	Ž	18	-	-
156	Žolčnik, žolčni vodi	M	40	1	3
	Gall bladder, bile ducts	Ž	84	4	5
157	Trebušna slinavka	M	75	2	3
	Pancreas	Ž	93	12	13
158	Retro-, peritonej	M	4	-	-
	Retro-, peritoneum	Ž	12	1	-
159	Prebavila, drugo	M	5	3	-
	Digestive organs, other	Ž	7	3	-
160	Nos, obnosne votline, drugo	M	12	-	-
	Nose, sinuses, etc.	Ž	8	1	-
161	Grlo	M	93	2	2
	Larynx	Ž	12	-	-
162	Sapnik, sapnica, pljuča	M	825	26	3
	Trachea, bronchus, lung	Ž	155	7	5
163	Plevra, mediastin., drugo	M	12	-	-
	Pleura, mediastinum, etc.	Ž	2	-	-
170	Kosti	M	5	-	-
	Bone	Ž	10	-	-
171	Mehka tkiva	M	10	-	-
	Soft tissues	Ž	12	-	-
172	Koža, maligni melanom	M	68	-	-
	Skin, malignant melanoma	Ž	82	-	-
173	Koža, drugi malignomi	M	342	-	-
	Skin, other malignancies	Ž	412	-	-
174	Dojka	M	8	-	-
	Breast	Ž	739	14	2
180	Maternica, vrat	Ž	157	1	1
	Uterus, cervix				
181	Horioepiteliom	Ž	1	-	-
	Chorioepithelioma				

cont. ↓

Tabela 3. Nadaljevanje - continued

<i>Šifra MKB*</i>	<i>Primarna lokacija</i>	<i>Spol</i>	<i>Število novih primerov</i>	<i>Registrirani samo iz zdravniških poročil o vzroku smrti</i>	
<i>ICD* No.</i>	<i>Primary site</i>	<i>Sex</i>	<i>Number of new cases</i>	<i>Število</i> <i>Registered from death certificates only</i> <i>Number</i>	<i>Odstotek**</i> <i>Per cent**</i>
182	Maternica, telo, drugo Uterus, corpus, etc.	Ž	248	3	1
183	Jajčnik, jajcevod, drugo Ovary, Fallopian tube, etc.	Ž	159	1	1
184	Nožnica, vulva, drugo Vagina, vulva, etc.	Ž	44	-	-
185	Prostata Prostate	M	263	17	6
186	Modo Testis	M	59	-	-
187	Penis, obmodek, drugo Penis, epididymis, etc.	M	4	-	-
188	Mehur Bladder	M Ž	126 47	3 3	2 6
189	Ledvica, sečevod, drugo Kidney, ureter, etc.	M Ž	99 93	1 2	1 2
190	Oko Eye	M Ž	9 9	- -	- -
191	Možgani Brain	M Ž	54 42	- 1	- 2
192	Živčevje, drugo Nervous system, other	M Ž	4 12	- -	- -
193	Ščitnica Thyroid	M Ž	13 59	- -	- -
194	Endokrine žleze, druge Endocrine glands, other	M Ž	2 6	- -	- -
195	Slabo opredeljena lokaliz. Ill-defined site	M Ž	10 30	3 5	17
196	Metastaze v bezgavkah Lymph node metastases	M Ž	11 12	- -	- -
197	Met. v dihalih, prebavilih Respiratory, digestive tract met.	M Ž	64 62	5 8	8 13
198	Metastaze, drugje Metastases, other	M Ž	32 13	- -	- -
199	Malignomi, neopredeljeni Malignancies, unspecified	M Ž	67 44	7 8	10 18

cont. ↓

Tabela 3. Nadaljevanje - continued

Šifra MKB*	Primarna lokacija	Spol	Število novih primerov	Registrirani samo iz zdravniških poročil o vzroku smrti	
ICD* No.	Primary site	Sex	Number of new cases	Število	Odstotek**
				Registered from death certificates only	Per cent**
				Number	Per cent**
200	Ne-Hodgkinovi limfomi	M	59	1	2
202	Non-Hodgkin's lymphomas	Ž	48	1	2
201	Hodgkinov limfom	M	21	-	-
	Hodgkin's disease	Ž	20	-	-
203	Plazmacitom	M	25	-	-
	Plasmacytoma	Ž	29	-	-
204.0	Levkemija, limfat., akutna	M	12	-	-
	Leukaemia, lymphatic acute	Ž	7	1	-
204.1	Levkemija, limfat., kronična	M	29	-	-
	Leukaemia, lymphatic chronic	Ž	27	-	-
205	Levkemija, mieloična	M	23	-	-
	Leukaemia, myeloid	Ž	21	-	-
206	Levkemija, monocitna	M	2	-	-
	Leukaemia, monocytic	Ž	2	-	-
207	Levkemije, druge	M	7	1	-
	Leukaemias, other	Ž	1	-	-
208	Policitemija, prava	M	8	-	-
	Polycythemia vera	Ž	4	-	-
209	Mielofibroza	M	5	-	-
	Myelofibrosis	Ž	4	-	-
Zgoraj neupoštevani					
Not included above					
-	Dojka, in situ	Ž	17	-	-
	Breast, in situ				
-	Maternica, vrat, CIN III***	Ž	545	-	-
	Uterus, cervix, CIN III***				
2250	Možgani, benigni tumor	M	5	-	-
	Brain, benign tumor	Ž	18	-	-
2381	Možgani, neopredeljeno	M	7	-	-
	Brain, unspecified	Ž	6	1	-

* Mednarodna klasifikacija bolezni, osma revizija, 1965
International Classification of Diseases, Eighth Revision, 1965

** Odstotki niso računani pri številih pod 15
Percentages are not calculated for less than 15 cases

*** Vse spremembe CIN III, vključno šifra 2340 (in situ)
All CIN III changes including 2340 (in situ)

Tabela 4. Število novih primerov raka po lokaciji, spolu in starosti - Slovenija 1993

Table 4. Number of new cancer cases by site, sex, and age - Slovenia 1993

Šifra MKB ICD No.	Lokacija Site	Spol Sex	Vse starosti All ages	Starost Age																	
				0-	5-	10-	15-	20-	25-	30-	35-	40-	45-	50-	55-	60-	65-	70-	75-	80+	?
140 209	Vse lokacije All sites	Skupaj Total	7 195	20	9	15	23	39	68	97	193	304	374	568	843	1043	1149	878	605	967	-
		Moški Male	3 658	8	6	7	14	19	31	35	72	136	191	292	512	583	612	433	296	411	-
		Ženske Female	3 537	12	3	8	9	20	37	62	121	168	183	276	331	460	537	445	309	556	-
140	Ustnica Lip	M Ž	25 5	-	-	-	-	-	-	1	-	1	1	2	1	6	3	3	2	5	-
141	Jezik Tongue	M Ž	27 9	-	-	-	-	-	-	-	-	1	1	4	8	8	2	2	1	-	-
142	Slinavke Salivary glands	M Ž	4 6	-	-	-	1	-	1	-	-	-	-	-	1	-	-	-	1	-	-
143	Dlesni Gum	M Ž	5 2	-	-	-	-	-	-	-	-	1	-	-	1	-	1	1	1	-	-
144	Ustno dno Floor of mouth	M Ž	41 4	-	-	-	-	-	-	1	3	5	4	10	10	4	3	1	-	-	-
145	Usta, drugo Mouth, other parts	M Ž	26 5	-	-	-	-	-	-	-	4	3	-	6	7	2	3	1	-	-	-
146	Orofarinks Oropharynx	M Ž	106 9	-	-	-	-	-	-	2	3	14	17	28	11	17	10	-	4	-	-
147	Epifarinks Epipharynx	M Ž	7 5	-	1	-	-	-	-	-	-	2	3	-	1	-	-	-	-	-	-
148	Hipofarinks Hypopharynx	M Ž	50 5	-	-	-	-	-	-	1	4	4	6	12	16	4	1	1	1	-	-
149	Žrelo, neoznačeno Pharynx, not specified	M Ž	- -	-	-	-	-	-	-	-	-	-	-	-	-	-	-	-	-	-	-
150	Požiralnik Esophagus	M Ž	67 9	-	-	-	-	-	-	1	3	6	2	13	17	11	5	3	6	-	-
151	Želodec Stomach	M Ž	318 215	-	-	-	1	2	-	3	4	8	7	11	13	18	44	28	25	51	-
152	Tanko črevo Small intestine	M Ž	8 4	-	-	-	-	-	-	-	-	-	-	1	2	3	2	-	-	-	-
153	Debelo črevo Colon	M Ž	202 213	-	-	1	-	-	-	7	3	7	12	25	28	37	36	16	30	-	-
154	Rektum Rectum, anus	M Ž	229 199	-	-	-	-	1	-	1	5	13	18	38	29	31	35	26	32	-	-

cont. ↓

Tabela 4. Nadaljevanje - continued

Šifra MKB	Lokacija ICD Site	Spol Sex	Vse starosti All ages	Starost Age																		
				0-	5-	10-	15-	20-	25-	30-	35-	40-	45-	50-	55-	60-	65-	70-	75-	80+	?	
155	Jetra Liver	M Ž	36 18	-	-	-	-	-	-	-	-	-	1	2	5	9	7	4	5	1	2	-
156	Žolčnik, žolčni vodi Gall bladder, bile ducts	M Ž	40 84	-	-	-	-	-	1	-	1	-	-	2	2	3	7	8	5	11	-	-
157	Trebušna slinavka Pancreas	M Ž	75 93	-	-	-	-	-	-	1	3	1	8	7	9	18	9	8	11	-	-	-
158	Retro-, peritonej Retro-, peritoneum	M Ž	4 12	-	-	-	-	1	-	-	1	2	-	-	-	-	-	-	-	-	-	-
159	Prebavila, drugo Digestive organs, other	M Ž	5 7	-	-	-	-	-	-	-	-	-	-	-	-	1	-	-	4	-	-	-
160	Nos, obnosne votl., drugo Nose, sinuses, etc.	M Ž	12 8	-	-	-	-	-	-	-	-	-	1	1	3	1	6	-	-	-	-	-
161	Grlo Larynx	M Ž	93 12	-	-	-	-	-	-	3	8	7	10	19	12	13	14	3	4	-	-	-
162	Sapnik, sapnica, pljuča Trachea, bronchus, lung	M Ž	825 155	-	-	-	1	-	1	8	30	45	81	131	170	166	90	47	55	-	-	-
163	Plevra, mediastin., drugo Pleura, mediastinum, etc.	M Ž	12 2	-	-	-	-	-	-	-	-	1	-	4	2	2	1	1	1	-	-	-
170	Kosti Bone	M Ž	5 10	-	-	3	-	-	-	-	-	-	-	2	-	-	-	-	-	-	-	-
171	Mehka tkiva Soft tissues	M Ž	10 12	-	-	-	1	2	-	-	1	-	1	1	1	1	-	-	2	-	-	-
172	Koža, maligni melanom Skin, malignant melanoma	M Ž	68 82	-	-	1	-	2	4	7	7	11	5	5	10	5	4	4	3	-	-	-
173	Koža, drugi malignomi Skin, other malignancies	M Ž	342 412	-	-	-	2	-	3	3	17	20	21	44	49	50	47	44	42	-	-	-
174	Dojka Breast	M Ž	8 739	-	-	-	-	-	1	-	2	-	1	1	3	-	-	-	-	-	-	-
180	Maternica, vrat Uterus, cervix	Ž	157	-	-	-	3	13	13	25	19	17	16	4	16	12	11	3	5	-	-	-
181	Horioepiteliom Chorioepithelioma	Ž	1	-	-	-	1	-	-	-	-	-	-	-	-	-	-	-	-	-	-	-
182	Maternica, telo, drugo Uterus, corpus, etc.	Ž	248	-	-	-	-	-	1	3	6	18	20	38	47	45	28	15	27	-	-	-
183	Jajčnik, jajcevod, drugo Ovary, Fallopian tube, etc.	Ž	159	-	-	1	1	1	3	4	6	8	13	16	15	28	21	16	14	12	-	-
184	Nožnica, vulva, drugo Vagina, vulva, etc.	Ž	44	-	-	-	1	1	1	1	2	-	2	3	4	6	9	5	9	-	-	-

cont. ↓

Tabela 4. Nadaljevanje - continued

Šifra MKB	Lokacija Site	Spol Sex	Vse starosti All ages	Starost Age																		
				0-	5-	10-	15-	20-	25-	30-	35-	40-	45-	50-	55-	60-	65-	70-	75-	80+	?	
185	Prostata Prostate	M	263	-	-	-	-	-	-	-	-	1	-	1	3	10	36	56	44	57	55	-
186	Modo Testis	M	59	-	-	-	5	7	14	12	10	4	2	1	-	1	3	-	-	-	-	-
187	Penis, obmodek, drugo Penis, epididymis, etc.	M	4	-	-	-	-	-	-	-	-	1	1	-	1	1	-	-	-	-	-	-
188	Mehur Bladder	M	126	-	-	-	-	-	-	-	2	3	2	11	12	13	32	14	12	25	-	
		Ž	47	-	-	-	-	-	-	-	-	-	-	-	1	4	4	10	7	6	15	-
189	Ledvica, sečevod, drugo Kidney, ureter, etc.	M	99	2	-	-	-	-	-	2	4	5	6	9	11	15	22	14	4	5	-	
		Ž	93	1	1	-	-	-	-	-	2	1	2	5	10	17	19	16	11	8	-	-
190	Okno Eye	M	9	-	-	-	1	-	-	-	-	-	-	2	-	1	2	2	1	-	-	
		Ž	9	-	-	-	-	1	-	-	1	1	-	1	-	1	1	2	1	-	-	-
191	Možgani Brain	M	54	1	3	3	-	1	2	2	3	4	6	6	10	7	5	1	-	-	-	
		Ž	42	2	1	1	1	1	2	1	4	3	1	3	4	8	6	3	1	-	-	-
192	Živčevje, drugo Nervous system, other	M	4	1	-	-	-	-	-	1	-	-	1	-	-	-	-	1	-	-	-	
		Ž	12	5	-	-	1	-	-	-	1	1	2	1	1	-	-	-	-	-	-	-
193	Ščitnica Thyroid	M	13	-	-	-	-	-	1	2	3	1	2	-	1	1	1	1	-	-	-	
		Ž	59	-	-	-	1	-	5	5	4	7	4	4	2	6	6	3	3	9	-	-
194	Endokrine žleze, druge Endocrine glands, other	M	2	-	-	-	-	-	-	-	1	-	-	-	-	1	-	-	-	-	-	
		Ž	6	-	-	-	-	-	-	-	-	1	-	2	1	2	-	-	-	-	-	-
195	Slabo opred. lokaliz. Ill-defined site	M	10	-	1	-	-	-	-	-	-	-	1	-	1	-	1	-	2	4	-	
		Ž	30	-	-	-	-	1	-	-	-	-	-	2	2	1	2	7	3	12	-	-
196	Metastaze v bezgavkah Lymph node metastases	M	11	-	-	-	-	-	-	-	-	-	-	2	1	2	2	3	-	1	-	
		Ž	12	-	-	-	-	-	-	-	-	2	-	1	2	2	1	2	-	2	-	-
197	Met. v dihalih, prebavilih Respiratory, digestive tract met.	M	64	-	-	-	-	-	-	-	1	3	1	5	10	9	9	8	5	13	-	
		Ž	62	-	-	-	-	-	-	-	-	2	1	6	2	4	11	7	11	18	-	-
198	Metastaze, drugje Metastases, other	M	32	-	-	-	-	-	-	-	1	-	1	3	7	5	7	3	1	4	-	
		Ž	13	-	-	-	-	-	-	-	-	1	1	1	1	-	2	4	1	2	-	-
199	Malignomi, neopredeljeni Malignancies, unspecified	M	67	-	-	-	-	-	-	2	-	1	4	7	7	14	10	9	4	9	-	
		Ž	44	-	-	-	-	-	-	1	1	1	-	5	3	6	5	6	6	10	-	-
200	Ne-Hodgkinovi limfomi	M	59	-	-	-	-	2	1	-	2	2	3	6	10	6	4	3	6	14	-	
202	Non-Hodgkin's lymphomas	Ž	48	1	-	-	-	-	1	1	2	1	1	2	6	4	8	6	3	12	-	
201	Hodgkinov limfom Hodgkin's disease	M	21	-	-	1	3	4	2	-	3	1	-	1	-	2	1	1	1	1	-	
		Ž	20	-	-	3	2	4	1	2	1	1	-	2	-	1	1	-	1	1	-	-
203	Plazmacitom Plasmacytoma	M	25	-	-	-	-	-	-	-	-	1	1	1	2	6	5	1	3	5	-	
		Ž	29	-	-	-	-	-	-	-	-	-	1	-	3	3	4	5	5	4	4	-

cont. ↓

Tabela 4. Nadaljevanje - continued

Šifra MKB	Lokacija	Spol	Vse starosti	Starost																	
				0-	5-	10-	15-	20-	25-	30-	35-	40-	45-	50-	55-	60-	65-	70-	75-	80+ ?	
ICD No.	Site	Sex	All ages	Age																	
204.0	Levkemija, limfat. akutna	M	12	4	1	2	-	1	-	2	-	-	1	-	-	-	-	1	-	-	
	Leukaemia, lymphatic, acute	Ž	7	3	1	-	-	-	-	-	-	-	1	-	-	1	-	-	-	1	
204.1	Levkemija, limfat. kron.	M	29	-	-	-	-	-	-	-	-	2	-	3	5	4	5	2	4	4	
	Leukaemia, lymphatic, chronic	Ž	27	-	-	-	-	-	-	-	-	1	2	1	8	3	4	5	3	-	
205	Levkemija, mieloična	M	23	-	-	-	-	1	-	1	1	1	2	3	2	2	3	2	5	-	
	Leukaemia, myeloid	Ž	21	-	-	1	1	-	1	-	2	2	1	1	2	3	3	-	4	-	
206	Levkemija, monocitna	M	2	-	-	-	-	-	-	-	1	-	-	-	-	-	-	1	-	-	
	Leukaemia, monocytic	Ž	2	-	-	-	-	-	-	-	-	-	1	-	-	-	-	-	1	-	
207	Levkemije, druge	M	7	-	-	-	-	-	-	1	-	1	-	-	1	1	1	-	2	-	
	Leukaemias, other	Ž	1	-	-	-	-	-	-	-	-	-	-	-	-	-	-	-	1	-	
208	Policitemija, prava	M	8	-	-	-	-	-	-	1	-	-	-	2	3	1	-	1	-	-	
	Polycythemia vera	Ž	4	-	-	-	-	-	-	1	-	-	-	-	-	-	2	-	1	-	
209	Mielofibroza	M	5	-	-	-	-	-	-	-	-	1	-	-	-	1	-	2	1	-	
	Myelofibrosis	Ž	4	-	-	-	-	-	-	-	-	-	-	-	1	1	1	1	1	-	
Zgoraj neupoštevani																					
Not included above																					
-	Dojka, in situ	Ž	17	-	-	-	-	-	-	1	-	1	5	4	1	2	3	-	-	-	
	Breast, in situ																				
-	Maternica, vrat, CIN III*	Ž	545	-	-	2	34	126	151	119	56	34	13	3	2	3	2	-	-	-	
	Uterus, cervix CIN III*																				
2250	Možgani, benigni tumor	M	6	-	-	-	-	-	-	2	-	-	1	1	-	1	1	-	-	-	
	Brain, benign tumor	Ž	18	-	-	-	-	1	-	-	1	3	4	1	3	2	2	1	-	-	
2381	Možgani, neopredeljeno	M	7	1	-	-	-	-	-	1	-	-	-	-	-	2	-	3	-	-	
	Brain, unspecified	Ž	6	-	-	-	-	-	-	-	1	1	-	1	-	1	1	1	1	-	

* Vse spremembe CIN III, vključno šifra 2340 (in situ)
All CIN III changes including 2340 (in situ)

Tabela 5. Incidenca raka na 100 000 prebivalcev po lokaciji, spolu in starosti - Slovenija 1993

Table 5. Cancer incidence per 100 000 population by site, sex, and age - Slovenia 1993

Šifra MEB	Lokacija Site	Spol Sex	Vse starosti All ages	Starost																	?
				0-4	5-9	10-14	15-19	20-24	25-29	30-34	35-39	40-44	45-49	50-54	55-59	60-64	65-69	70-74	75-79	80+	
140	Vse lokacije All sites	Skupaj Total	361.4	18.4	7.0	10.2	15.4	27.6	44.5	62.9	119.0	192.7	311.1	475.2	758.6	967.8	1322.6	1456.0	1807.6	1951.6	-
		Moški Male	379.0	14.3	9.1	9.3	18.3	26.6	40.8	45.2	87.2	167.9	312.4	489.3	953.3	1202.6	1835.2	2077.2	2596.7	2826.7	-
		Ženske Female	344.9	22.8	4.8	11.2	12.4	28.6	48.1	80.7	152.0	218.9	309.8	461.2	576.5	775.8	1003.3	1127.8	1400.1	1588.2	-
140	Ustnica Lip	M Ž	2.6 0.5	- -	- -	- -	- -	- -	- -	1.3 -	- -	1.2 -	1.6 -	3.4 -	1.9 -	12.4 1.7	9.0 -	14.4 2.5	17.5 -	34.4 8.6	- -
141	Jezik Tongue	M Ž	2.8 0.9	- -	- -	- -	- -	- 1.4	- -	- -	- -	1.2 -	1.6 1.7	6.7 -	14.9 -	16.5 1.7	6.0 7.5	9.6 -	8.8 -	- 5.7	- -
142	Slinavke Salivary glands	M Ž	0.4 0.6	- -	- -	- -	1.3 -	- -	1.3 -	- -	- -	- -	- 1.7	- -	1.9 1.7	- -	- 1.9	- 5.1	8.8 -	- 2.9	- -
143	Dlesni Gum	M Ž	0.5 0.2	- -	- -	- -	- -	- -	- -	- -	1.2 -	- 1.3	- -	- -	1.7 1.7	- -	2.1 -	3.0 -	4.8 -	- -	- -
144	Ustno dno Floor of mouth	M Ž	4.2 0.4	- -	- -	- -	- -	- -	- -	- 1.3	1.2 -	3.7 -	8.2 -	6.7 -	18.6 -	20.6 3.4	12.0 -	14.4 -	8.8 -	- 2.9	- -
145	Usta, drugo Mouth, other parts	M Ž	2.7 0.5	- -	- -	- -	- -	- -	- -	- -	- 4.9	4.9 -	- -	11.2 3.3	14.4 -	6.0 -	14.4 3.7	8.8 -	- 2.9	- -	- -
146	Orofarinks Oropharynx	M Ž	11.0 0.9	- -	- -	- -	- -	- -	- -	2.4 -	3.7 -	22.9 -	28.5 -	52.1 1.7	22.7 5.1	51.0 3.7	48.0 -	- -	27.5 -	- -	- -
147	Epifarinks Epipharynx	M Ž	0.7 0.5	- -	1.5 -	- -	- -	- -	- -	- -	- -	- -	3.3 -	5.0 1.7	- -	2.1 3.4	- 1.9	- -	- 4.5	- -	- -

cont. ↓

Tabela 5. Nadaljevanje - continued

Šifra MKB	Lokacija Site	Spol Sex	Vse starosti All ages	Starost Age																	
				0-4	5-9	10-14	15-19	20-24	25-29	30-34	35-39	40-44	45-49	50-54	55-59	60-64	65-69	70-74	75-79	80+	?
148	Hipofarinks Hypopharynx	M Ž	5.2 0.5	-	-	-	-	-	-	-	1.2	4.9	6.5	10.1	22.3	33.0	12.0	4.8	8.8	6.9	-
149	Žrelo, neoznačeno Pharynx, not specified	M Ž	- -	-	-	-	-	-	-	-	-	-	-	-	-	-	-	-	-	-	-
150	Požiralnik Esophagus	M Ž	6.9 0.9	-	-	-	-	-	-	-	1.2	3.7	9.8	3.4	24.2	35.1	33.0	24.0	26.3	41.3	-
151	Želodec Stomach	M Ž	32.9 21.0	-	-	-	-	-	2.6	2.6	1.2	11.1	14.7	41.9	87.5	101.1	164.9	211.1	219.3	343.9	-
152	Tanko črevo Small intestine	M Ž	0.8 0.4	-	-	-	-	-	-	-	-	-	-	1.7	3.7	6.2	6.0	-	-	-	-
153	Debelo črevo Colon	M Ž	20.9 20.8	-	-	1.3	-	-	-	-	8.5	3.7	11.4	20.1	46.5	57.8	111.0	172.7	140.4	206.3	-
154	Rektum Rectum, anus	M Ž	23.7 19.4	-	-	-	-	-	1.3	-	1.2	6.2	21.3	30.2	70.8	59.8	93.0	167.9	228.1	220.1	-
155	Jetra Liver	M Ž	3.7 1.8	-	-	-	-	-	-	-	1.2	3.3	8.4	16.8	14.4	12.0	24.0	8.8	13.8	-	-
156	Žolčnik, žolčni vodi Gall bladder, bile ducts	M Ž	4.1 8.2	-	-	-	-	-	1.3	-	1.2	-	-	3.4	3.7	6.2	21.0	38.4	43.9	75.7	-
157	Trebušna slinavka Pancreas	M Ž	7.8 9.1	-	-	-	-	-	-	-	1.2	3.7	1.6	13.4	13.0	18.6	54.0	43.2	70.2	75.7	-
158	Retro-, peritonej Retro-, peritoneum	M Ž	0.4 1.2	-	-	-	-	-	1.3	-	-	1.2	3.3	-	-	-	-	-	-	-	-
159	Prebavila, drugo Digestive organs, other	M Ž	0.5 0.7	-	-	-	-	-	-	-	-	-	-	-	-	-	3.0	-	-	27.5	-

cont. ↓

Tabela 5. Nadaljevanje - continued

Šifra MKB	Lokacija Site	Spol Sex	Vse starosti All ages	Starost Age																		
				0-4	5-9	10-14	15-19	20-24	25-29	30-34	35-39	40-44	45-49	50-54	55-59	60-64	65-69	70-74	75-79	80+	?	
160	Nos, obnosne votl., drugo Nose, sinuses, etc.	M	1.2	-	-	-	-	-	-	-	-	-	-	1.6	1.7	5.6	2.1	18.0	-	-	-	-
		Ž	0.8	-	-	-	-	-	-	-	-	-	-	-	-	-	-	3.4	1.9	5.1	-	8.6
161	Grlo Larynx	M	9.6	-	-	-	-	-	-	-	3.6	9.9	11.4	16.8	35.4	24.8	39.0	67.2	26.3	27.5	-	-
		Ž	1.2	-	-	-	-	-	-	-	-	1.3	3.4	-	1.7	5.1	3.7	5.1	-	2.9	-	-
162	Sapnik, sapnica, pljuča Trachea, bronchus, lung	M	85.5	-	-	-	-	1.4	-	1.3	9.7	37.0	73.6	135.7	243.9	350.7	497.8	431.8	412.3	378.3	-	-
		Ž	15.1	-	-	-	-	-	-	-	6.3	3.9	15.2	21.7	22.6	52.3	50.4	60.8	68.0	42.8	-	-
163	Plevra, mediastin., drugo Pleura, mediastinum, etc.	M	1.2	-	-	-	-	-	-	-	-	-	-	1.6	-	7.4	4.1	6.0	4.8	8.8	6.9	-
		Ž	0.2	-	-	-	-	-	-	-	1.3	-	1.7	-	-	-	-	-	-	-	-	-
170	Kosti Bone	M	0.5	-	-	-	3.9	-	-	-	-	-	-	-	-	3.7	-	-	-	-	-	-
		Ž	1.0	-	-	2.8	-	-	-	-	1.3	2.5	-	-	-	3.5	3.4	-	2.5	-	-	-
171	Mehka tkiva Soft tissues	M	1.0	-	-	-	-	1.4	2.6	-	-	1.2	-	1.7	1.9	2.1	3.0	-	-	13.8	-	-
		Ž	1.2	-	-	-	-	-	1.3	-	-	-	-	3.3	1.7	3.4	5.6	2.5	4.5	2.9	-	-
172	Koža, maligni melanom Skin, malignant melanoma	M	7.0	-	-	-	1.3	-	2.6	5.2	8.5	8.6	18.0	8.4	9.3	20.6	15.0	19.2	35.1	20.6	-	-
		Ž	8.0	-	-	-	4.3	5.2	9.1	5.0	6.5	11.9	30.1	15.7	11.8	9.3	10.1	13.6	17.1	-	-	-
173	Koža, drugi malignomi Skin, other malignancies	M	35.4	-	-	-	-	2.8	-	3.9	3.6	21.0	32.7	35.2	81.9	101.1	149.9	225.5	386.0	288.9	-	-
		Ž	40.2	-	-	1.4	1.4	1.4	-	2.6	3.8	15.6	11.9	38.4	64.4	86.0	134.5	144.5	249.2	257.1	-	-
174	Dojka Breast	M	0.8	-	-	-	-	-	-	1.3	-	2.5	-	1.7	1.9	6.2	-	-	-	-	-	-
		Ž	72.1	-	-	-	-	-	3.9	18.2	52.7	84.7	106.7	117.0	165.5	140.0	203.6	192.6	185.8	222.8	-	-
180	Maternica, vrat Uterus, cervix	Ž	15.3	-	-	-	-	4.3	16.9	16.9	31.4	24.8	28.8	26.7	7.0	27.0	22.4	27.9	13.6	14.3	-	-
181	Horioepiteliom Chorioepithelioma	Ž	0.1	-	-	-	-	1.4	-	-	-	-	-	-	-	-	-	-	-	-	-	-
182	Maternica, telo, drugo Uterus, corpus, etc.	Ž	24.2	-	-	-	-	-	-	1.3	3.8	7.8	30.5	33.4	66.2	79.3	84.1	71.0	68.0	77.1	-	-

cont. ↓

Tabela 5. Nadaljevanje - continued

Šifra MKB ICD No.	Lokacija Site	Spol Sex	Vse starosti All ages	Starost Age																	?
				0-4	5-9	10-14	15-19	20-24	25-29	30-34	35-39	40-44	45-49	50-54	55-59	60-64	65-69	70-74	75-79	80+	
183	Jajčnik, jajcevod, drugo Ovary, Fallopian tube, etc.	Ž	15.5	-	-	1.4	1.4	1.4	3.9	5.2	7.5	10.4	22.0	26.7	26.1	47.2	39.2	40.6	63.4	34.3	-
184	Nožnica, vulva, drugo Vagina, vulva, etc.	Ž	4.3	-	-	-	-	1.4	1.3	1.3	1.3	2.6	-	3.3	5.2	6.7	11.2	22.8	22.7	25.7	-
185	Prostata Prostate	M	27.2	-	-	-	-	-	-	-	1.2	-	1.6	5.0	18.6	74.3	167.9	211.1	500.0	378.3	-
186	Modo Testis	M	6.1	-	-	-	6.5	9.8	18.4	15.5	12.1	4.9	3.3	1.7	-	2.1	9.0	-	-	-	-
187	Penis, obmodek, drugo Penis, epididymis, etc.	M	0.4	-	-	-	-	-	-	-	-	1.2	1.6	-	1.9	2.1	-	-	-	-	-
188	Mehur Bladder	M	13.1	-	-	-	-	-	-	-	2.4	3.7	3.3	18.4	22.3	26.8	96.0	67.2	105.3	171.9	-
		Ž	4.6	-	-	-	-	-	-	-	-	-	-	-	1.7	7.0	6.7	18.7	17.7	27.2	42.8
189	Ledvica, sečevod, drugo Kidney, ureter, etc.	M	10.3	3.6	-	-	-	-	-	2.6	4.8	6.2	9.8	15.1	20.5	30.9	66.0	67.2	35.1	34.4	-
		Ž	9.1	1.9	1.6	-	-	-	-	-	2.5	1.3	3.4	8.4	17.4	28.7	35.5	40.6	49.8	22.9	-
190	Oko Eye	M	0.9	-	-	-	1.3	-	-	-	-	-	-	3.4	-	2.1	6.0	9.6	8.8	-	-
		Ž	0.9	-	-	-	-	1.4	-	-	1.3	1.3	-	1.7	-	1.7	1.9	5.1	4.5	-	-
191	Možgani Brain	M	5.6	1.8	4.5	4.0	-	1.4	2.6	2.6	3.6	4.9	9.8	10.1	18.6	14.4	15.0	4.8	-	-	-
		Ž	4.1	3.8	1.6	1.4	1.4	1.4	2.6	1.3	5.0	3.9	1.7	5.0	7.0	13.5	11.2	7.6	4.5	-	-
192	Živčevje, drugo Nervous system, other	M	0.4	1.8	-	-	-	-	-	1.3	-	-	1.6	-	-	-	-	4.8	-	-	-
		Ž	1.2	9.5	-	-	1.4	-	-	-	1.3	1.3	3.4	1.7	1.7	-	-	-	-	-	-
193	Ščitnica Thyroid	M	1.3	-	-	-	-	-	1.3	2.6	3.6	1.2	3.3	-	1.9	2.1	3.0	4.8	-	-	-
		Ž	5.8	-	-	-	1.4	-	6.5	6.5	5.0	9.1	6.8	6.7	3.5	10.1	11.2	7.6	13.6	25.7	-
194	Endokrine žleze, druge Endocrine glands, other	M	0.2	-	-	-	-	-	-	-	1.2	-	-	-	-	2.1	-	-	-	-	-
		Ž	0.6	-	-	-	-	-	-	-	-	-	1.3	-	3.3	1.7	3.4	-	-	-	-

cont. ↓

Tabela 5. Nadaljevanje - continued

Šifra MKB	Lokacija	Spol	Vse starosti	Starost																	?	
				0-4	5-9	10-14	15-19	20-24	25-29	30-34	35-39	40-44	45-49	50-54	55-59	60-64	65-69	70-74	75-79	80+		
ICD No.	Site	Sex	All ages	Age																		
195	Slabo opredeljena lokaliz. Ill-defined site	M	1.0	-	1.5	-	-	-	-	-	-	-	-	1.6	-	1.9	-	3.0	-	17.5	27.5	-
		Ž	2.9	-	-	-	-	-	1.3	-	-	-	-	-	3.3	3.5	1.7	3.7	17.7	13.6	34.3	-
196	Metastaze v bezgavkah Lymph node metastases	M	1.1	-	-	-	-	-	-	-	-	-	-	-	3.4	1.9	4.1	6.0	14.4	-	6.9	-
		Ž	1.2	-	-	-	-	-	-	-	-	2.6	-	1.7	3.5	3.4	1.9	5.1	-	-	5.7	-
197	Met. v dihalih, prebavilih Respiratory, digestive tract met.	M	6.6	-	-	-	-	-	-	-	1.2	3.7	1.6	8.4	18.6	18.6	27.0	38.4	43.9	89.4	-	
		Ž	6.0	-	-	-	-	-	-	-	-	2.6	1.7	10.0	3.5	6.7	20.6	17.7	49.8	51.4	-	
198	Metastaze, drugje Metastases, other	M	3.3	-	-	-	-	-	-	-	1.2	-	1.6	5.0	13.0	10.3	21.0	14.4	8.8	27.5	-	
		Ž	1.3	-	-	-	-	-	-	-	-	-	1.3	1.7	1.7	1.7	-	3.7	10.1	4.5	5.7	-
199	Malignomi, neopredeljeni Malignancies, unspecified	M	6.9	-	-	-	-	-	-	2.6	-	1.2	6.5	11.7	13.0	28.9	30.0	43.2	35.1	61.9	-	
		Ž	4.3	-	-	-	-	-	-	1.3	1.3	1.3	-	8.4	5.2	10.1	9.3	15.2	27.2	28.6	-	
200 202	Ne-Hodgkinovi limfomi Non-Hodgkin's lymphomas	M	6.1	-	-	-	-	2.8	1.3	-	2.4	2.5	4.9	10.1	18.6	12.4	12.0	14.4	52.6	96.3	-	
		Ž	4.7	1.9	-	-	-	-	1.3	1.3	2.5	1.3	1.7	3.3	10.5	6.7	14.9	15.2	13.6	34.3	-	
201	Hodgkinov limfom Hodgkin's disease	M	2.2	-	-	1.3	3.9	5.6	2.6	-	3.6	1.2	-	1.7	-	4.1	3.0	4.8	8.8	6.9	-	
		Ž	2.0	-	-	4.2	2.8	5.7	1.3	2.6	1.3	1.3	-	3.3	-	1.7	1.9	-	4.5	2.9	-	
203	Plazmacitom Plasmacytoma	M	2.6	-	-	-	-	-	-	-	-	1.2	1.6	1.7	3.7	12.4	15.0	4.8	26.3	34.4	-	
		Ž	2.8	-	-	-	-	-	-	-	-	-	1.3	-	5.0	5.2	6.7	9.3	12.7	18.1	11.4	-
204.0	Levkemija, limfatična, ak. Leukaemia, lymphatic, ac.	M	1.2	7.2	1.5	2.7	-	1.4	-	2.6	-	-	1.6	-	-	-	-	4.8	-	-	-	
		Ž	0.7	5.7	1.6	-	-	-	-	-	-	-	-	1.7	-	-	1.7	-	-	-	2.9	-
204.1	Levkemija, limfatična, kron. Leukaemia, lymphatic, chron.	M	3.0	-	-	-	-	-	-	-	-	2.5	-	5.0	9.3	8.3	15.0	9.6	35.1	27.5	-	
		Ž	2.6	-	-	-	-	-	-	-	-	-	-	1.7	3.3	1.7	13.5	5.6	10.1	22.7	8.6	-
205	Levkemija, mieloična Leukaemia, myeloid	M	2.4	-	-	-	-	-	1.3	-	1.2	1.2	1.6	3.4	5.6	4.1	6.0	14.4	17.5	34.4	-	
		Ž	2.0	-	-	-	1.4	1.4	-	1.3	-	2.6	3.4	1.7	1.7	3.4	5.6	7.6	-	11.4	-	
206	Levkemija, monocitna Leukaemia, monocytic	M	0.2	-	-	-	-	-	-	-	-	-	1.2	-	-	-	-	-	8.8	-	-	
		Ž	0.2	-	-	-	-	-	-	-	-	-	-	-	1.7	-	-	-	-	-	2.9	-

cont. ↓

Tabela 5. Nadaljevanje - continued

Šifra MKB	Lokacija	Spol	Vse starosti	Starost																?	
				0-4	5-9	10-14	15-19	20-24	25-29	30-34	35-39	40-44	45-49	50-54	55-59	60-64	65-69	70-74	75-79		80+
ICD No.	Site	Sex	All ages	Age																	
207	Levkemije, druge	M	0.7	-	-	-	-	-	-	-	1.2	-	1.6	-	-	2.1	3.0	4.8	-	13.8	-
	Leukaemias, other	Ž	0.1	-	-	-	-	-	-	-	-	-	-	-	-	-	-	-	-	2.9	-
208	Policitemija, prava	M	0.8	-	-	-	-	-	-	1.2	-	-	-	3.7	6.2	3.0	-	8.8	-	-	-
	Polycythemia vera	Ž	0.4	-	-	-	-	-	-	-	1.3	-	-	-	-	-	5.1	-	2.9	-	-
209	Mielofibroza	M	0.5	-	-	-	-	-	-	-	-	-	1.6	-	-	-	3.0	-	17.5	6.9	-
	Myelofibrosis	Ž	0.4	-	-	-	-	-	-	-	-	-	-	-	-	1.9	2.5	4.5	2.9	-	-
Zgoraj neupoštevani																					
Not included above																					
-	Dojka, in situ	Ž	1.7	-	-	-	-	-	-	-	1.3	-	1.7	8.4	7.0	1.7	3.7	7.6	-	-	-
	Breast, in situ																				
-	Maternica, vrat, CIN III*	Ž	53.1	-	-	-	2.8	48.7	163.7	196.6	149.4	73.0	57.6	21.7	5.2	3.4	5.6	5.1	-	-	-
	Uterus, cervix, CIN III																				
2250	Možgani, benigni tumor	M	0.6	-	-	-	-	-	-	2.4	-	-	1.7	1.9	-	3.0	4.8	-	-	-	-
	Brain, benign tumor	Ž	1.8	-	-	-	-	-	1.3	-	-	1.3	5.1	6.7	1.7	5.1	3.7	5.1	4.5	-	-
2381	Možgani, neopredeljeno	M	0.7	1.8	-	-	-	-	-	1.2	-	-	-	-	-	6.0	-	26.3	-	-	-
	Brain, unspecified	Ž	0.6	-	-	-	-	-	-	-	-	-	1.7	1.7	-	1.7	-	2.5	4.5	2.9	-

* Vse spremembe CIN III, vključno šifra 2340 (in situ)
All CIN III changes including 2340 (in situ)

Tabela 6. Število novih primerov raka po zdravstvenih regijah, po najpogostejših lokacijah in spolu - Slovenija 1993

Table 6. Number of new cancer cases by health regions, by most frequent sites and sex - Slovenia 1993

Zdravstvena regija Health region	Spol Sex	Skupaj 140 - 209 All sites	L o k a c i j a (šifre MKB)* Site (ICD No.)*								Druge lokal. Other sites		
			151	153	154	162	173	174	180	182	185	219	
Slovenija skupaj Slovenia, total	M	3 658	318	202	229	825	342	8	-	-	263	1471	-
	Ž	3 537	215	213	199	155	412	739	157	248	-	1199	545
Celje	M	425	29	19	31	113	30	2	-	-	17	184	-
	Ž	411	33	30	22	15	41	71	25	34	-	140	68
Gorica	M	190	11	15	11	37	15	-	-	-	21	80	-
	Ž	190	6	9	9	10	21	52	3	9	-	71	15
Koper	M	274	16	14	12	60	34	1	-	-	17	120	-
	Ž	216	8	10	8	13	21	44	12	18	-	82	28
Kranj	M	318	41	12	20	71	24	2	-	-	28	120	-
	Ž	348	16	26	14	24	33	77	17	26	-	115	42
Ljubljana	M	1150	94	70	59	266	116	1	-	-	77	467	-
	Ž	1171	65	67	59	50	129	269	45	89	-	398	184
Ljublj. občine	M	651	45	40	42	147	82	-	-	-	47	262	-
	Ž	733	38	42	36	35	82	183	23	52	-	242	118
Maribor	M	595	63	28	39	142	63	-	-	-	49	211	-
	Ž	551	46	33	41	19	63	110	32	39	-	168	133
Občina Maribor	M	360	46	19	25	74	38	-	-	-	32	126	-
	Ž	336	28	17	21	13	37	70	21	29	-	100	84
Murska Sobota	M	263	26	15	25	46	34	-	-	-	15	102	-
	Ž	235	19	13	20	8	49	36	5	17	-	68	24
Novo mesto	M	228	21	13	20	40	16	2	-	-	19	97	-
	Ž	231	13	14	18	5	36	48	6	11	-	80	4
Ravne	M	215	17	16	12	50	10	-	-	-	20	90	-
	Ž	184	9	11	8	11	19	32	12	5	-	77	47

* Opis šifer MKB:

Description of the ICD numbers:

151 Želodec
Stomach153 Debelo črevo
Colon154 Rektum
Rectum, anus162 Sapnik, sapnica, pljuča
Trachea, bronchus, lung173 Koža, drugi malignomi
Skin, other malignancies174 Dojka
Breast180 Maternica, vrat
Uterus, cervix182 Maternica, telo, drugo
Uterus, corpus, etc.185 Prostata
Prostate** Neupoštevano v skupnem številu: 219 Maternica, vrat, CIN III
Not included in all sites: Uterus, cervix, CIN III

Tabela 7. Število novih primerov raka, ugotovljenih v bolnišnicah, ter število in odstotek mikroskopsko potrjenih primerov, po lokaciji in spolu - Slovenija 1993

Table 7. Total number of new cancer cases diagnosed in hospitals and number and percentage of microscopically confirmed cases, by site and sex - Slovenia 1993

Šifra MKB*	L o k a c i j a	Spol	Število novih primerov	Mikroskopsko potrjeni primeri	
				Število	Odstotek**
ICD* No.	Site	Sex	Number of new cases	Microscopically confirmed cases Number	Per cent**
140	Vse lokacije	Skupaj	6 969	6 396	92
-	All sites	Total			
209		Moški	3 548	3 239	91
		Male			
		Ženske	3 421	3 157	92
		Female			
140	Ustnica	M	25	24	96
	Lip	Ž	5	5	
141	Jezik	M	27	27	100
	Tongue	Ž	9	9	
142	Slinavke	M	4	4	
	Salivary glands	Ž	6	6	
143	Dlesni	M	5	5	
	Gum	Ž	2	2	
144	Ustno dno	M	41	41	100
	Floor of mouth	Ž	4	4	
145	Usta, drugo	M	26	26	100
	mouth, other parts	Ž	5	5	
146	Orofarinks	M	105	105	100
	Oropharynx	Ž	9	8	
147	Epifarinks	M	7	7	
	Epipharynx	Ž	5	5	
148	Hipofarinks	M	50	50	100
	Hypopharynx	Ž	5	5	
149	Žrelo, neoznačeno	M	-	-	
	Pharynx, not specified	Ž	-	-	
150	Požiralnik	M	66	59	89
	Esophagus	Ž	7	5	
151	Želodec	M	299	267	89
	Stomach	Ž	196	164	84
152	Tanko črevo	M	8	7	
	Small intestine	Ž	4	4	

cont. ↓

Tabela 7. Nadaljevanje - continued

Šifra MKB*	L o k a c i j a	Spol	Število novih primerov	Mikroskopsko potrjeni primeri	
				Število	Odstotek**
ICD* No.	Site	Sex	Number of new cases	Microscopically confirmed cases Number	Per cent**
153	Debelo črevo Colon	M	195	171	88
		Ž	202	191	95
154	Rektum Rectum, anus	M	219	201	92
		Ž	191	173	91
155	Jetra Liver	M	36	32	89
		Ž	18	16	89
156	Žolčnik, žolčni vodi Gall bladder, bile ducts	M	39	28	72
		Ž	80	58	73
157	Trebušna slinavka Pancreas	M	73	43	59
		Ž	81	40	49
158	Retro-, peritonej Retro-, peritoneum	M	4	4	
		Ž	11	9	
159	Prebavila, drugo Digestive organs, other	M	2	2	
		Ž	4	3	
160	Nos, obnosne votline, drugo Nose, sinuses, etc.	M	12	12	
		Ž	7	6	
161	Grlo Larynx	M	91	90	99
		Ž	12	12	
162	Sapnik, sapnica, pljuča Trachea, bronchus, lung	M	799	744	93
		Ž	148	135	91
163	Plevra, mediastin., drugo Pleura, mediastinum, etc.	M	12	12	
		Ž	2	1	
170	Kosti Bone	M	5	5	
		Ž	10	10	
171	Mehka tkiva Soft tissues	M	10	10	
		Ž	12	12	
172	Koža, maligni melanom Skin, malignant melanoma	M	68	68	100
		Ž	82	82	100
173	Koža, drugi malignomi Skin, other malignancies	M	342	334	98
		Ž	412	403	98
174	Dojka Breast	M	8	8	
		Ž	725	703	97
180	Maternica, vrat Uterus, cervix	Ž	156	156	100
181	Horioepiteliom Chorioepithelioma	Ž	1	1	

cont. ↓

Tabela 7. Nadaljevanje - continued

Šifra MKB*	L o k a c i j a	Spol	Število novih primerov	Mikroskopsko potrjeni primeri	
				Število	Odstotek**
ICD* No.	Site	Sex	Number of new cases	Microscopically confirmed cases Number	Per cent**
182	Maternica, telo, drugo Uterus, corpus, etc.	Ž	245	243	99
183	Jajčnik, jajcevod, drugo Ovary, Fallopian tube, etc.	Ž	158	150	95
184	Nožnica, vulva, drugo Vagina, vulva, etc.	Ž	44	41	93
185	Prostata Prostate	M	246	223	91
186	Modo Testis	M	59	59	100
187	Penis, obmodek, drugo Penis, epididymis, etc.	M	4	4	
188	Mehur Bladder	M Ž	123 44	113 42	92 95
189	Ledvica, sečevod, drugo Kidney, ureter, etc.	M Ž	98 91	91 81	93 89
190	Oko Eye	M Ž	9 9	8 8	
191	Možgani Brain	M Ž	54 41	50 40	93 98
192	Živčevje, drugo Nervous system, other	M Ž	4 12	4 12	
193	Ščitnica Thyroid	M Ž	13 59	13 59	100
194	Endokrine žleze, druge Endocrine glands, other	M Ž	2 6	1 6	
195	Slabo opredeljena lokaliz. Ill-defined site	M Ž	7 25	3 16	64
196	Metastaze v bezgavkah Lymph node metastases	M Ž	11 12	11 12	
197	Met. v dihalih, prebavilih Respiratory, digestive tract met.	M Ž	59 54	30 27	51 50
198	Metastaze, drugje Metastases, other	M Ž	32 13	12 6	38
199	Malignomi, neopred. Malignancies, unspecified	M Ž	60 36	42 22	70 61

cont. ↓

Tabela 7. Nadaljevanje - continued

Šifra MKB*	L o k a c i j a	Spol	Število novih primerov	Mikroskopsko potrjeni primeri	
				Število	Odstotek**
ICD* No.	Site	Sex	Number of new cases	Microscopically confirmed cases Number	Per cent**
200	Ne-Hodgkinovi limfomi	M	58	58	100
202	Non-Hodgkin's lymphomas	Ž	47	46	98
201	Hodgkinov limfom	M	21	21	100
	Hodgkin's disease	Ž	20	20	100
203	Plazmacitom	M	25	25	100
	Plasmacytoma	Ž	29	28	97
204.0	Levkemija, limfatična, akut.	M	12	12	
	Leukaemia, lymphatic, acute	Ž	6	6	
204.1	Levkemija, limfatična, kron.	M	29	29	100
	Leukaemia, lymphatic, chronic	Ž	27	27	100
205	Levkemija, mieloična	M	23	23	100
	Leukaemia, myeloid	Ž	21	21	100
206	Levkemija, monocitna	M	2	2	
	Leukaemia, monocytic	Ž	2	2	
207	Levkemije, druge	M	6	6	
	Leukaemias, other	Ž	1	1	
208	Policitemija, prava	M	8	8	
	Polycythemia vera	Ž	4	4	
209	Mielofibroza	M	5	5	
	Myelofibrosis	Ž	4	4	
Zgoraj neupoštevani					
Not included above					
-	Dojka, in situ	Ž	17	17	100
	Breast, in situ				
-	Maternica, vrat, CIN III	Ž	545	545	100
	Uterus, cervix, CIN III				
2250	Možgani, benigni tumor	M	5	5	
	Brain, benign tumor	Ž	18	17	94
2381	Možgani, neopredeljeno	M	7	2	
	Brain, unspecified	Ž	5	1	

* Mednarodna klasifikacija bolezni, osma revizija, 1965
International classification of diseases, eighth revision, 1965

** Odstotki niso računani pri številih pod 15
Percentages are not calculated for less than 15 cases

Tabela 8. Število histološko (in citološko) potrjenih novih primerov raka - po histološki vrsti in lokaciji - Slovenija 1993

Table 8. Number of histologically (and cytologically) confirmed new cancer cases by histologic type and site - Slovenia 1993

Histološka vrsta Histologic type	Skupaj All sites	L o k a c i j a (šifra MKB) - S i t e (ICD No.)												
		140 - 209	140	141	142	143	144	145	146	147	148			
Vse vrste - hist.(cit.)	5632(764)	29	-	34 (2)	9 (1)	7	-	45	-	29 (2)	113	-	11 (1)	54 (1)
All types - hist.(cyt.)														
Carcinoma non specified	329 (233)	-	-	3 (1)	1	-	-	1	-	-	4	-	2	1
Small cell carcinoma	111 (64)	-	-	-	-	-	-	-	-	-	-	-	-	-
Papillary carcinoma	8	2	-	1	-	-	-	-	-	1	-	-	-	-
Squamous carcinoma	994 (140)	27	-	26 (1)	-	6	-	44	-	24 (1)	102	-	6 (1)	53 (1)
Basal cell carcinoma	537 (22)	-	-	-	-	-	-	-	-	-	-	-	-	-
Transitional cell ca.	157 (1)	-	-	-	-	-	-	-	-	-	-	-	-	-
Adenocarcinoma	2691 (200)	-	-	1	2 (1)	1	-	-	-	1 (1)	-	-	-	-
Mucoepidermoid ca.	7	-	-	-	4	-	-	-	-	1	1	-	-	-
Fibrosarcoma	2	-	-	-	-	-	-	-	-	-	-	-	-	-
Fibrohistiocytic sarcoma	12	-	-	-	-	-	-	-	-	-	-	-	-	-
Liposarcoma	4	-	-	-	-	-	-	-	-	-	-	-	-	-
Leiomyosarcoma	21	-	-	-	-	-	-	-	-	-	-	-	-	-
Rhabdomyosarcoma	1	-	-	-	-	-	-	-	-	-	-	-	-	-
Endothelial vessels sarcoma	2	-	-	-	-	-	-	-	-	-	-	-	-	-
Perivascular sarcoma	-	-	-	-	-	-	-	-	-	-	-	-	-	-
Malignant mesothelioma	14 (1)	-	-	-	-	-	-	-	-	-	-	-	-	-
Neural sarcoma	6 (2)	-	-	-	-	-	-	-	-	-	-	-	-	-
Malignant paraganglioma	-	-	-	-	-	-	-	-	-	-	-	-	-	-
Malignant mesenchymoma	1	-	-	-	-	-	-	-	-	-	-	-	-	-
Miscellaneous sarcoma	5 (1)	-	-	-	-	-	-	-	-	-	-	-	-	-
Unclassified														
soft tissue sarcoma	6 (2)	-	-	-	-	-	-	-	-	-	-	-	-	-
Osteosarcoma	7 (1)	-	-	-	-	-	-	-	-	-	-	-	-	-
Chondrosarcoma	3	-	-	-	-	-	-	-	-	-	-	-	-	-
Complex mixed and stromal malignoma	16	-	-	-	1	-	-	-	-	-	-	-	-	-
Retinoblastoma	-	-	-	-	-	-	-	-	-	-	-	-	-	-
Cystosarcoma phyllodes	-	-	-	-	-	-	-	-	-	-	-	-	-	-
Malignant melanoma	168 (5)	-	-	-	-	-	-	-	-	2	-	-	-	-
Specialized gonadal malignoma	-	-	-	-	-	-	-	-	-	-	-	-	-	-
Dysgerminoma and seminoma	27 (1)	-	-	-	-	-	-	-	-	-	-	-	-	-
Other germ cell malignoma	32 (1)	-	-	-	-	-	-	-	-	-	-	-	-	-
Trophoblastic malignoma	3	-	-	-	-	-	-	-	-	-	-	-	-	-
Brenner tumor	-	-	-	-	-	-	-	-	-	-	-	-	-	-
Malignant glioma	89	-	-	-	-	-	-	-	-	-	-	-	-	-
Malignant meningioma	3	-	-	-	-	-	-	-	-	-	-	-	-	-
Non Hodgkin lymphoma	143 (35)	-	-	3	1	-	-	-	-	-	6	-	3	-
Hodgkin lymphoma	39 (2)	-	-	-	-	-	-	-	-	-	-	-	-	-
Plasma cell tumors	50 (5)	-	-	-	-	-	-	-	-	-	-	-	-	-
Leukemia except chronic lymphoid	60 (13)	-	-	-	-	-	-	-	-	-	-	-	-	-
Chronic lymphoid leukemia	44 (12)	-	-	-	-	-	-	-	-	-	-	-	-	-
Other lymphoreticular neoplasms	-	-	-	-	-	-	-	-	-	-	-	-	-	-
Mast cell sarcoma	-	-	-	-	-	-	-	-	-	-	-	-	-	-
Miscellaneous malignoma	21 (2)	-	-	-	-	-	-	-	-	-	-	-	-	-
Small cell malignoma	1 (2)	-	-	-	-	-	-	-	-	-	-	-	-	-
Malignoma non specified	18 (19)	-	-	-	-	-	-	-	-	-	-	-	-	-

Tabela 8. Nadaljevanje - continued

<i>Histološka vrsta</i> <i>Histologic type</i>	<i>Skupaj</i> <i>All sites</i>	<i>L o k a c i j a (šifra MKB) - Site (ICD No.)</i>															
		140 - 209	150	151	152	153	154	155	156	157	158	159 <i>cont. →</i>					
Vse vrste - hist.(cit.)	5632(764)	62 (2)	423 (8)	11	-	361 (1)	369 (5)	40 (8)	83 (3)	69(14)	11 (2)	2 (3)					
All types - hist.(cyl)																	
Carcinoma non specified	329 (233)	6 (1)	34 (3)	-	-	16	-	16 (3)	2	-	7	-	6 (5)	-	-	-	-
Small cell carcinoma	111 (64)	-	-	-	-	-	-	-	-	-	-	-	-	-	-	-	-
Papillary carcinoma	8	-	-	-	-	-	-	-	-	-	-	-	-	-	-	-	-
Squamous carcinoma	994 (140)	54 (1)	1	-	-	-	-	2	-	-	-	-	1	-	-	-	-
Basal cell carcinoma	537 (22)	-	-	-	-	-	-	-	-	-	-	-	-	-	-	-	-
Transitional cell ca.	157 (1)	-	-	-	-	-	-	1	-	-	-	-	-	-	-	-	-
Adenocarcinoma	2691 (200)	2	-	353 (5)	5	-	341	-	346 (2)	38 (8)	76 (2)	60 (6)	-	(1)	2 (3)	-	-
Mucoepidermoid ca.	7	-	-	-	-	-	-	-	-	-	-	-	-	-	-	-	-
Fibrosarcoma	2	-	-	-	-	-	-	-	-	-	-	-	-	-	-	-	-
Fibrohistiocytic sarcoma	12	-	-	-	-	-	-	-	-	-	-	-	-	-	1	-	-
Liposarcoma	4	-	-	-	-	-	-	-	-	-	-	-	-	-	1	-	-
Leiomyosarcoma	21	-	-	5	-	3	-	-	-	-	-	-	-	-	4	-	-
Rhabdomyosarcoma	1	-	-	-	-	-	-	-	-	-	-	-	-	-	-	-	-
Endothelial vessels sarcoma	2	-	-	-	-	-	-	-	-	-	-	-	-	-	-	-	-
Perivascular sarcoma	-	-	-	-	-	-	-	-	-	-	-	-	-	-	-	-	-
Malignant mesothelioma	14 (1)	-	-	-	-	-	-	-	-	-	-	-	-	-	3	-	-
Neural sarcoma	6 (2)	-	-	-	-	-	-	-	-	-	-	-	-	-	-	-	-
Malignant paraganglioma	-	-	-	-	-	-	-	-	-	-	-	-	-	-	-	-	-
Malignant mesenchymoma	1	-	-	1	-	-	-	-	-	-	-	-	-	-	-	-	-
Miscellaneous sarcoma	5 (1)	-	-	-	-	-	-	-	-	-	-	-	-	-	-	-	-
Unclassified																	
soft tissue sarcoma	6 (2)	-	-	-	-	-	-	-	-	-	-	-	1	-	-	-	-
Osteosarcoma	7 (1)	-	-	-	-	-	-	-	-	-	-	-	-	-	-	-	-
Chondrosarcoma	3	-	-	-	-	-	-	-	-	-	-	-	-	-	-	-	-
Complex mixed and stromal malignoma	16	-	-	-	2	-	-	2	-	-	-	-	-	-	-	-	-
Retinoblastoma	-	-	-	-	-	-	-	-	-	-	-	-	-	-	-	-	-
Cystosarcoma phyllodes	-	-	-	-	-	-	-	-	-	-	-	-	-	-	-	-	-
Malignant melanoma	168 (5)	-	-	-	-	-	-	-	-	-	-	-	-	-	-	-	-
Specialized gonadal malignoma	-	-	-	-	-	-	-	-	-	-	-	-	-	-	-	-	-
Dysgerminoma and seminoma	27 (1)	-	-	-	-	-	-	-	-	-	-	-	-	-	-	-	-
Other germ cell malignoma	32 (1)	-	-	-	-	-	-	-	-	-	-	-	-	-	2	-	-
Trophoblastic malignoma	3	-	-	-	-	-	-	-	-	-	-	-	-	-	-	-	-
Brenner tumor	-	-	-	-	-	-	-	-	-	-	-	-	-	-	-	-	-
Malignant glioma	89	-	-	-	-	-	-	-	-	-	-	-	-	-	-	-	-
Malignant meningioma	3	-	-	-	-	-	-	-	-	-	-	-	-	-	-	-	-
Non Hodgkin lymphoma	143 (35)	-	-	23	-	1	-	1 (1)	-	-	-	-	-	-	-	-	-
Hodgkin lymphoma	39 (2)	-	-	-	-	-	-	-	-	-	-	-	-	-	-	-	-
Plasma cell tumors	50 (5)	-	-	1	-	-	-	-	-	-	-	-	-	-	-	-	-
Leukemia except chronic lymphoid	60 (13)	-	-	-	-	-	-	-	-	-	-	-	-	-	-	-	-
Chronic lymphoid leukemia	44 (12)	-	-	-	-	-	-	-	-	-	-	-	-	-	-	-	-
Other lymphoreticular neoplasms	-	-	-	-	-	-	-	-	-	-	-	-	-	-	-	-	-
Mast cell sarcoma	-	-	-	-	-	-	-	-	-	-	-	-	-	-	-	-	-
Miscellaneous malignoma	21 (2)	-	-	-	-	-	-	-	-	-	-	-	-	-	-	-	-
Small cell malignoma	1 (2)	-	-	-	-	-	-	-	-	-	-	-	1	-	-	(1)	-
Malignoma non specified	18 (19)	-	-	5	-	-	3	-	2	-	-	-	(1)	-	(1)	-	-

Tabela 8. Nadaljevanje - continued

Histološka vrsta Histologic type	Skupaj All sites	Lokacija (šifra MKB) - Site (ICD No.)									
	140 - 209	160	161	162	163	170	171	172	173	174	cont. →
Vse vrste - hist.(cit.)	5632(764)	18	-	101 (1)	550(329)	11 (2)	12 (3)	21 (1)	148 (2)	703(34)	582(129)
All types - hist.(cyt.)											
Carcinoma non specified	329 (233)	1	-	-	87 (78)	-	-	-	-	16 (4)	35(100)
Small cell carcinoma	111 (64)	-	-	-	108 (60)	-	-	-	-	-	-
Papillary carcinoma	8	-	-	-	-	-	-	-	-	3	-
Squamous carcinoma	994 (140)	8	-	99 (1)	241(120)	-	-	-	-	130 (9)	-
Basal cell carcinoma	537 (22)	-	-	-	-	-	-	-	-	535 (21)	1 (1)
Transitional cell ca.	157 (1)	-	-	-	-	-	-	-	-	-	-
Adenocarcinoma	2691 (200)	2	-	1	112 (66)	-	-	-	-	3	541 (27)
Mucoepidermoid ca.	7	-	-	-	-	-	-	-	-	-	-
Fibrosarcoma	2	-	-	-	-	-	-	2	-	-	-
Fibrohistiocytic sarcoma	12	-	-	-	-	-	-	7	-	4	-
Liposarcoma	4	1	-	-	-	-	-	2	-	-	-
Leiomyosarcoma	21	-	-	-	1	-	1	1	-	1	-
Rhabdomyosarcoma	1	-	-	-	-	-	-	-	-	-	-
Endothelial vessels sarcoma	2	1	-	-	-	-	-	-	-	1	-
Perivascular sarcoma	-	-	-	-	-	-	-	-	-	-	-
Malignant mesothelioma	14 (1)	-	-	-	-	11 (1)	-	-	-	-	-
Neural sarcoma	6 (2)	-	-	-	-	-	-	-	-	1	-
Malignant paraganglioma	-	-	-	-	-	-	-	-	-	-	-
Malignant mesenchymoma	1	-	-	-	-	-	-	-	-	-	-
Miscellaneous sarcoma	5 (1)	-	-	-	-	-	1 (1)	3	-	-	1
Unclassified											
soft tissue sarcoma	6 (2)	-	-	-	-	-	-	3 (1)	-	-	-
Osteosarcoma	7 (1)	-	-	-	-	-	7 (1)	-	-	-	-
Chondrosarcoma	3	-	-	-	-	-	3	-	-	-	-
Complex mixed and stromal malignoma	16	-	-	1	1	-	-	-	-	-	1
Retinoblastoma	-	-	-	-	-	-	-	-	-	-	-
Cystosarcoma phyllodes	-	-	-	-	-	-	-	-	-	-	-
Malignant melanoma	168 (5)	1	-	-	-	-	-	-	148 (2)	-	-
Specialized gonadal malignoma	-	-	-	-	-	-	-	-	-	-	-
Dysgerminoma and seminoma	27 (1)	-	-	-	-	-	-	-	-	-	-
Other germ cell malignoma	32 (1)	-	-	-	-	-	-	-	-	-	-
Trophoblastic malignoma	3	-	-	-	-	-	-	-	-	-	-
Brenner tumor	-	-	-	-	-	-	-	-	-	-	-
Malignant glioma	89	-	-	-	-	-	-	-	-	-	-
Malignant meningioma	3	-	-	-	-	-	-	-	-	-	-
Non Hodgkin lymphoma	143 (35)	4	-	-	-	(1)	(1)	1	-	7	3
Hodgkin lymphoma	39 (2)	-	-	-	-	-	-	-	-	-	-
Plasma cell tumors	50 (5)	-	-	-	-	-	-	-	-	1	-
Leukemia except chronic lymphoid	60 (13)	-	-	-	-	-	-	-	-	-	-
Chronic lymphoid leukemia	44 (12)	-	-	-	-	-	-	-	-	-	-
Other lymphoreticular neoplasms	-	-	-	-	-	-	-	-	-	-	-
Mast cell sarcoma	-	-	-	-	-	-	-	-	-	-	-
Miscellaneous malignoma	21 (2)	-	-	-	-	-	-	2	-	-	-
Small cell malignoma	1 (2)	-	-	-	-	-	-	-	-	-	-
Malignoma non specified	18 (19)	-	-	-	(5)	-	-	-	-	1	(1)

Tabela 8. Nadaljevanje - continued

<i>Histološka vrsta</i> <i>Histologic type</i>	<i>Skupaj</i> <i>All sites</i>	<i>L o k a c i j a (šifra MKB) - S i t e (ICD No.)</i>															
		140 - 209	180	181	182	183	184	185	186	187	188	189 <i>cont. →</i>					
Vse vrste - hist.(cit.)	5632(764)	156	-	1	-	243	-	141 (9)	40 (1)	221 (2)	57 (2)	4	-	155	-	160(12)	
All types - hist.(cyt.)																	
Carcinoma non specified	329 (233)	7	-	-	-	4	-	4 (2)	1	-	50	-	-	-	5	-	2
Small cell carcinoma	111 (64)	-	-	-	-	-	-	-	-	-	-	-	-	-	1	-	-
Papillary carcinoma	8	-	-	-	-	-	-	-	1	-	-	-	-	-	-	-	-
Squamous carcinoma	994 (140)	124	-	-	-	-	-	-	31	-	1	-	-	4	-	1	-
Basal cell carcinoma	537 (22)	-	-	-	-	-	-	-	1	-	-	-	-	-	-	-	-
Transitional cell ca.	157 (1)	-	-	-	-	-	-	-	-	-	2	-	-	-	140	-	13 (1)
Adenocarcinoma	2691 (200)	24	-	-	-	231	-	130 (7)	3	-	168 (2)	-	-	-	8	-	140(10)
Mucoepidermoid ca.	7	-	1	-	-	-	-	-	-	-	-	-	-	-	-	-	-
Fibrosarcoma	2	-	-	-	-	-	-	-	-	-	-	-	-	-	-	-	-
Fibrohistiocytic sarcoma	12	-	-	-	-	-	-	-	-	-	-	-	-	-	-	-	-
Liposarcoma	4	-	-	-	-	-	-	-	-	-	-	-	-	-	-	-	-
Leiomyosarcoma	21	-	-	-	-	4	-	-	1	-	-	-	-	-	-	-	-
Rhabdomyosarcoma	1	-	-	-	-	-	-	-	-	-	-	-	-	-	-	-	-
Endothelial vessels sarcoma	2	-	-	-	-	-	-	-	-	-	-	-	-	-	-	-	-
Perivascular sarcoma	-	-	-	-	-	-	-	-	-	-	-	-	-	-	-	-	-
Malignant mesothelioma	14 (1)	-	-	-	-	-	-	-	-	-	-	-	-	-	-	-	-
Neural sarcoma	6 (2)	-	-	-	-	-	-	-	-	-	-	-	-	-	-	-	-
Malignant paraganglioma	-	-	-	-	-	-	-	-	-	-	-	-	-	-	-	-	-
Malignant mesenchymoma	1	-	-	-	-	-	-	-	-	-	-	-	-	-	-	-	-
Miscellaneous sarcoma	5 (1)	-	-	-	-	-	-	-	-	-	-	-	-	-	-	-	-
Unclassified																	
soft tissue sarcoma	6 (2)	-	-	-	-	1	-	-	1	-	-	-	-	-	-	-	-
Osteosarcoma	7 (1)	-	-	-	-	-	-	-	-	-	-	-	-	-	-	-	-
Chondrosarcoma	3	-	-	-	-	-	-	-	-	-	-	-	-	-	-	-	-
Complex mixed and stromal malignoma	16	-	-	-	-	3	-	1	-	-	-	-	-	-	-	-	4
Retinoblastoma	-	-	-	-	-	-	-	-	-	-	-	-	-	-	-	-	-
Cystosarcoma phyllodes	-	-	-	-	-	-	-	-	-	-	-	-	-	-	-	-	-
Malignant melanoma	168 (5)	-	-	-	-	-	-	-	1	-	-	-	-	-	-	-	1
Specialized gonadal malignoma	-	-	-	-	-	-	-	-	-	-	-	-	-	-	-	-	-
Dysgerminoma and seminoma	27 (1)	-	-	-	-	-	-	-	-	-	-	-	26 (1)	-	-	-	-
Other germ cell malignoma	32 (1)	-	-	-	-	-	5	-	-	-	-	-	25 (1)	-	-	-	-
Trophoblastic malignoma	3	-	-	-	1	-	-	-	-	-	-	-	2	-	-	-	-
Brenner tumor	-	-	-	-	-	-	-	-	-	-	-	-	-	-	-	-	-
Malignant glioma	89	-	-	-	-	-	-	-	-	-	-	-	-	-	-	-	-
Malignant meningioma	3	-	-	-	-	-	-	-	-	-	-	-	-	-	-	-	-
Non Hodgkin lymphoma	143 (35)	-	-	-	-	-	-	-	-	-	-	4	-	-	-	-	-
Hodgkin lymphoma	39 (2)	-	-	-	-	-	-	-	-	-	-	-	-	-	-	-	-
Plasma cell tumors	50 (5)	-	-	-	-	-	-	-	-	-	-	-	-	-	-	-	-
Leukemia except chronic lymphoid	60 (13)	-	-	-	-	-	-	-	-	-	-	-	-	-	-	-	-
Chronic lymphoid leukemia	44 (12)	-	-	-	-	-	-	-	-	-	-	-	-	-	-	-	-
Other lymphoreticular neoplasms	-	-	-	-	-	-	-	-	-	-	-	-	-	-	-	-	-
Mast cell sarcoma	-	-	-	-	-	-	-	-	-	-	-	-	-	-	-	-	-
Miscellaneous malignoma	21 (2)	-	-	-	-	-	-	-	-	-	-	-	-	-	-	-	-
Small cell malignoma	1 (2)	-	-	-	-	-	-	-	-	-	-	-	-	-	-	-	-
Malignoma non specified	18 (19)	-	-	-	-	-	-	1	-	-	(1)	-	-	-	-	-	(1)

Tabela 8. Nadaljevanje - continued

<i>Histološka vrsta</i>	<i>Skupaj</i>	<i>L o k a c i j a (šifra MKB) - S i t e (ICD No.)</i>												
<i>Histologic type</i>	<i>All sites</i>	190	191	192	193	194	195	196	197	198	199			
		<i>cont. →</i>												
Vse vrste - hist.(cit.)	5632(764)	16	-	90	-	13 (3)	60(12)	5 (2)	8(11)	9(14)	24(33)	8(10)	26(38)	
All types - hist.(cyt.)														
Carcinoma non specified	329 (233)	-	-	-	-	-	2 (3)	1	-	1 (3)	- (7)	4 (8)	1 (4)	9(11)
Small cell carcinoma	111 (64)	-	-	-	-	-	-	-	-	-	(2)	1	-	1
Papillary carcinoma	8	-	-	-	-	-	-	-	-	-	-	-	-	-
Squamous carcinoma	994 (140)	1	-	-	-	-	-	-	-	(1)	6	-	-	(2)
Basal cell carcinoma	537 (22)	-	-	-	-	-	-	-	-	-	-	-	-	2 (2)
Transitional cell ca.	157 (1)	-	-	-	-	-	-	-	-	-	1	-	-	-
Adenocarcinoma	2691 (200)	-	-	-	-	-	56 (4)	4 (2)	6 (4)	1 (4)	15(21)	7 (4)	11(20)	
Mucoepidermoid ca.	7	-	-	-	-	-	-	-	-	-	-	-	-	-
Fibrosarcoma	2	-	-	-	-	-	-	-	-	-	-	-	-	-
Fibrohistiocytic sarcoma	12	-	-	-	-	-	-	-	-	-	-	-	-	-
Liposarcoma	4	-	-	-	-	-	-	-	-	-	-	-	-	-
Leiomyosarcoma	21	-	-	-	-	-	-	-	-	-	-	-	-	-
Rhabdomyosarcoma	1	-	-	-	-	-	-	-	1	-	-	-	-	-
Endothelial vessels sarcoma	2	-	-	-	-	-	-	-	-	-	-	-	-	-
Perivascular sarcoma	-	-	-	-	-	-	-	-	-	-	-	-	-	-
Malignant mesothelioma	14 (1)	-	-	-	-	-	-	-	-	-	-	-	-	-
Neural sarcoma	6 (2)	-	-	-	5 (2)	-	-	-	-	-	-	-	-	-
Malignant paraganglioma	-	-	-	-	-	-	-	-	-	-	-	-	-	-
Malignant mesenchymoma	1	-	-	-	-	-	-	-	-	-	-	-	-	-
Miscellaneous sarcoma	5 (1)	-	-	-	-	-	-	-	-	-	-	-	-	-
Unclassified														
soft tissue sarcoma	6 (2)	-	-	-	-	-	-	-	(1)	-	-	-	-	-
Osteosarcoma	7 (1)	-	-	-	-	-	-	-	-	-	-	-	-	-
Chondrosarcoma	3	-	-	-	-	-	-	-	-	-	-	-	-	-
Complex mixed and stromal malignoma	16	-	-	-	-	-	-	-	-	-	-	-	-	-
Retinoblastoma	-	-	-	-	-	-	-	-	-	-	-	-	-	-
Cystosarcoma phyllodes	-	-	-	-	-	-	-	-	-	-	-	-	-	-
Malignant melanoma	168 (5)	13	-	-	-	(1)	-	-	-	1 (1)	- (1)	-	-	1
Specialized gonadal malignoma	-	-	-	-	-	-	-	-	-	-	-	-	-	-
Dysgerminoma and seminoma	27 (1)	-	-	-	-	-	-	-	-	-	1	-	-	-
Other germ cell malignoma	32 (1)	-	-	-	-	-	-	-	-	-	-	-	-	-
Trophoblastic malignoma	3	-	-	-	-	-	-	-	-	-	-	-	-	-
Brenner tumor	-	-	-	-	-	-	-	-	-	-	-	-	-	-
Malignant glioma	89	-	-	83	-	6	-	-	-	-	-	-	-	-
Malignant meningioma	3	-	-	3	-	-	-	-	-	-	-	-	-	-
Non Hodgkin lymphoma	143 (35)	1	-	4	-	2	-	2 (5)	-	-	-	-	-	-
Hodgkin lymphoma	39 (2)	-	-	-	-	-	-	-	-	-	-	-	-	-
Plasma cell tumors	50 (5)	-	-	-	-	-	-	-	-	-	-	-	-	-
Leukemia except chronic lymphoid	60 (13)	-	-	-	-	-	-	-	-	-	-	-	-	-
Chronic lymphoid leukemia	44 (12)	-	-	-	-	-	-	-	-	-	-	-	-	-
Other lymphoreticular neoplasms	-	-	-	-	-	-	-	-	-	-	-	-	-	-
Mast cell sarcoma	-	-	-	-	-	-	-	-	-	-	-	-	-	-
Miscellaneous malignoma	21 (2)	-	-	-	-	-	-	-	-	-	-	-	-	-
Small cell malignoma	1 (2)	-	-	-	-	-	-	-	(1)	-	-	-	-	-
Malignoma non specified	18 (19)	1	-	-	-	-	-	-	(1)	1	-	2 (3)	-	2 (5)

Tabela 8. Nadaljevanje - continued

Histološka vrsta <i>Histologic type</i>	Skupaj 140 - 209 <i>All sites</i>	L o k a c i j a (šifra MKB) - Site (ICD No.)									
		200 202	201	203	204	205	206	207	208	209	
Vse vrste - hist.(cit.) All types - hist.(cyt.)	5632(764)	77(27)	39 (2)	48 (5)	62(12)	32(12)	4	-	6 (1)	11 (1)	8 (1)
Carcinoma non specified	329 (233)	-	-	-	-	-	-	-	-	-	-
Small cell carcinoma	111 (64)	-	-	-	-	-	-	-	-	-	-
Papillary carcinoma	8	-	-	-	-	-	-	-	-	-	-
Squamous carcinoma	994 (140)	-	-	-	-	-	-	-	-	-	-
Basal cell carcinoma	537 (22)	-	-	-	-	-	-	-	-	-	-
Transitional cell ca.	157 (1)	-	-	-	-	-	-	-	-	-	-
Adenocarcinoma	2691 (200)	-	-	-	-	-	-	-	-	-	-
Mucoepidermoid ca.	7	-	-	-	-	-	-	-	-	-	-
Fibrosarcoma	2	-	-	-	-	-	-	-	-	-	-
Fibrohistiocytic sarcoma	12	-	-	-	-	-	-	-	-	-	-
Liposarcoma	4	-	-	-	-	-	-	-	-	-	-
Leiomyosarcoma	21	-	-	-	-	-	-	-	-	-	-
Rhabdomyosarcoma	1	-	-	-	-	-	-	-	-	-	-
Endothelial vessels sarcoma	2	-	-	-	-	-	-	-	-	-	-
Perivascular sarcoma	-	-	-	-	-	-	-	-	-	-	-
Malignant mesothelioma	14 (1)	-	-	-	-	-	-	-	-	-	-
Neural sarcoma	6 (2)	-	-	-	-	-	-	-	-	-	-
Malignant paraganglioma	-	-	-	-	-	-	-	-	-	-	-
Malignant mesenchymoma	1	-	-	-	-	-	-	-	-	-	-
Miscellaneous sarcoma	5 (1)	-	-	-	-	-	-	-	-	-	-
Unclassified											
soft tissue sarcoma	6 (2)	-	-	-	-	-	-	-	-	-	-
Osteosarcoma	7 (1)	-	-	-	-	-	-	-	-	-	-
Chondrosarcoma	3	-	-	-	-	-	-	-	-	-	-
Complex mixed and stromal malignoma	16	-	-	-	-	-	-	-	-	-	-
Retinoblastoma	-	-	-	-	-	-	-	-	-	-	-
Cystosarcoma phyllodes	-	-	-	-	-	-	-	-	-	-	-
Malignant melanoma	168 (5)	-	-	-	-	-	-	-	-	-	-
Specialized gonadal malignoma	-	-	-	-	-	-	-	-	-	-	-
Dysgerminoma and seminoma	27 (1)	-	-	-	-	-	-	-	-	-	-
Other germ cell malignoma	32 (1)	-	-	-	-	-	-	-	-	-	-
Trophoblastic malignoma	3	-	-	-	-	-	-	-	-	-	-
Brenner tumor	-	-	-	-	-	-	-	-	-	-	-
Malignant glioma	89	-	-	-	-	-	-	-	-	-	-
Malignant meningioma	3	-	-	-	-	-	-	-	-	-	-
Non Hodgkin lymphoma	143 (35)	77 (27)	-	-	-	-	-	-	-	-	-
Hodgkin lymphoma	39 (2)	-	39 (2)	-	-	-	-	-	-	-	-
Plasma cell tumors	50 (5)	-	-	48 (5)	-	-	-	-	-	-	-
Leukemia except chronic lymphoid	60 (13)	-	-	-	18	32 (12)	4	6 (1)	-	-	-
Chronic lymphoid leukemia	44 (12)	-	-	-	44 (12)	-	-	-	-	-	-
Other lymphoreticular neoplasms	-	-	-	-	-	-	-	-	-	-	-
Mast cell sarcoma	-	-	-	-	-	-	-	-	-	-	-
Miscellaneous malignoma	21 (2)	-	-	-	-	-	-	-	-	11 (1)	8 (1)
Small cell malignoma	1 (2)	-	-	-	-	-	-	-	-	-	-
Malignoma non specified	18 (19)	-	-	-	-	-	-	-	-	-	-

Tabela 9. Število primerov ne-Hodgkinovih limfomov* po lokaciji, spolu in starosti - Slovenija 1993

Table 9. Total number of non-Hodgkin's malignant lymphomas* by site, sex, and age - Slovenia 1993

Šifra MKB	Lokacija	Spol	Vse starosti	Starost																	?
				0-	5-	10-	15-	20-	25-	30-	35-	40-	45-	50-	55-	60-	65-	70-	75-	80+	
ICD No.	Site	Sex	All ages	Age																	
	Vse lokacije All sites	Skupaj Total	178	1	1	1	2	4	3	1	4	5	10	14	23	20	28	16	12	33	-
		Moški Male	94	-	1	1	2	2	-	2	2	6	12	15	10	12	5	6	17	-	
		Ženske Female	84	1	-	-	1	2	1	1	2	3	4	2	8	10	16	11	6	16	-
**	Glava in vrat Head and neck	M	9	-	1	-	-	-	-	-	-	-	1	2	2	-	1	-	-	2	-
		Ž	8	-	-	-	-	1	-	-	-	-	1	-	-	1	3	1	-	1	-
151	Želodec Stomach	M	15	-	-	-	-	1	-	-	-	-	3	1	3	4	2	1	-	-	
		Ž	8	-	-	-	1	1	-	-	-	1	-	-	-	2	-	1	1	1	-
152	Tanko črevo Small intestine	M	-	-	-	-	-	-	-	-	-	-	-	-	-	-	-	-	-	-	
		Ž	1	-	-	-	-	-	-	-	-	-	-	-	-	-	1	-	-	-	
153	Debelo črevo Colon	M	2	-	-	1	-	-	-	-	-	-	-	-	-	1	-	-	-	-	
		Ž	-	-	-	-	-	-	-	-	-	-	-	-	-	-	-	-	-	-	
163	Plevra Pleura	M	1	-	-	-	-	-	-	-	-	-	-	-	-	-	-	-	-	1	
		Ž	-	-	-	-	-	-	-	-	-	-	-	-	-	-	-	-	-	-	
170	Kosti Bone	M	-	-	-	-	-	-	-	-	-	-	-	-	-	-	-	-	-	-	
		Ž	1	-	-	-	-	-	-	-	-	-	-	-	-	-	-	1	-	-	
171	Mehka tkiva Soft tissue	M	-	-	-	-	-	-	-	-	-	-	-	-	-	-	-	-	-	-	
		Ž	1	-	-	-	-	-	-	-	-	-	-	-	1	-	-	-	-	-	
173	Koža Skin	M	3	-	-	-	-	-	-	-	-	2	-	-	-	-	1	-	-	-	
		Ž	4	-	-	-	-	-	-	-	-	-	-	1	-	2	-	1	-	-	
174	Dojka Breast	M	-	-	-	-	-	-	-	-	-	-	-	-	-	-	-	-	-	-	
		Ž	3	-	-	-	-	-	-	-	-	-	-	-	1	-	1	-	1	-	
186	Modo Testis	M	4	-	-	-	1	-	-	-	-	-	1	-	-	2	-	-	-	-	
190	Oko Eye	M	-	-	-	-	-	-	-	-	-	-	-	-	-	-	-	-	-	-	
		Ž	1	-	-	-	-	-	-	-	-	-	-	-	-	-	-	1	-	-	
191	Možgani Brain	M	2	-	-	-	-	-	-	-	-	-	-	2	-	-	-	-	-	-	
		Ž	2	-	-	-	-	-	-	-	-	1	1	-	-	-	-	-	-	-	
192	Živčevje, drugo Nervous system, other	M	-	-	-	-	-	-	-	-	-	-	-	-	-	-	-	-	-	-	
		Ž	2	-	-	-	-	-	-	-	1	1	-	-	-	-	-	-	-	-	
193	Ščitnica Thyroid	M	-	-	-	-	-	-	-	-	-	-	-	-	-	1	2	-	1	3	
		Ž	7	-	-	-	-	-	-	-	-	-	-	-	-	-	-	-	-	-	
202	Bezgavke Lymph nodes	M	58	-	-	-	2	1	-	2	2	3	6	10	6	4	3	5	14	-	
		Ž	46	1	-	-	-	1	1	2	1	1	2	6	4	8	6	3	10	-	

* Vključeni so vsi citološko in/ali histološko potrjeni primeri
All cases included have been cytologically or histologically verified

** Šifre MKB/ ICD Nos.: 141, 142, 146, 147, 160

Tabela 10. Število novih primerov raka po bolnišnicah ugotovitve diagnoze ter število in odstotek primerov, napotenih na Onkološki inštitut (OI) - Slovenija 1993

Table 10. Number of new cancer cases diagnosed by reporting hospitals, and number and percentage of cases referred to the Institute of Oncology (IO), Ljubljana - Slovenia 1993

<i>Bolnišnice</i>	<i>Število novih primerov</i>	<i>Napoteni na OI</i>	
<i>Hospitals</i>	<i>Number of new cases</i>	<i>Število</i>	<i>Odstotek*</i>
		<i>Referred to the IO Number</i>	<i>Per cent*</i>
Skupaj	6 969	3 612	52
Total			
Onkološki inštitut, Ljubljana	734	734	100
Institute of Oncology, Ljubljana			
Klinični center, Ljubljana	2 414	1 271	53
University Medical Center, Ljubljana			
Dermatološka klinika	165	13	8
Gastroenterološka interna klinika	143	47	33
Ginekološka klinika	206	155	75
Infekcijska klinika	24	15	63
Inštitut za gerontologijo	24	9	38
Inštitut za pljučne bolezni in tbc, Golnik	479	271	57
Interna klinika	200	60	30
Kirurška gastroenterološka klinika	350	205	59
Klinična bolnišnica za pediatrijo	34	29	85
Klinična bolnišnica za psihiatrijo	2	0	
Klinika za maksilofacialno kirurgijo	53	45	85
Klinika za nevrokirurgijo	58	34	59
Klinika za plastično kirurgijo in opeklino	81	35	43
Klinika za torakalno kirurgijo	59	27	46
Nevrološka klinika	45	28	62
Očesna klinika	19	13	68
Ortopedska klinika	7	7	
Otorinolaringološka klinika	195	180	92
Travmatološka klinika	3	1	
Urološka klinika	267	97	36
Splošne in specialne bolnišnice	3 754	1 559	42
General and special hospitals			
Splošna bolnišnica Brežice	52	29	56
Splošna bolnišnica Celje**	673	328	49

cont. ↓

Tabela 10. Nadaljevanje - continued

<i>Bolnišnice</i>	<i>Število novih primerov</i>	<i>Napoteni na OI</i>	
<i>Hospitals</i>	<i>Number of new cases</i>	<i>Število</i>	<i>Odstotek*</i>
		<i>Referred to the IO</i>	<i>Number</i>
			<i>Per cent*</i>
Splošna bolnišnica Jesenice	132	56	42
Splošna bolnišnica Izola	178	85	48
Splošna bolnišnica Maribor	1 132	392	35
Splošna bolnišnica Murska Sobota	348	137	39
Splošna bolnišnica Nova Gorica	317	117	37
Splošna bolnišnica Novo mesto	362	151	42
Splošna bolnišnica Ptuj	73	21	29
Splošna bolnišnica Slovenj Gradec	207	75	36
Splošna bolnišnica Trbovlje	59	27	46
Bolnišnica za ginekologijo in porodništvo Kranj	26	21	81
Bolnišnica za ženske bolezni in porodništvo Postojna	25	24	96
Bolnišnica za zdravljenje in rehabilitacijo pljučnih bolnikov Sežana	67	34	51
Ortopedska bolnišnica Valdoltra	6	6	
Psihiatrična bolnišnica Begunje	-	-	
Psihiatrična bolnišnica Idrija	-	-	
Diagnostični center Bled	97	56	58
Drugi zdravstveni zavodi	67	48	72
Other health institutions			

* Odstotki niso računani pri številih pod 15
Percentages are not calculated for less than 15 cases

** Vključno bolnišnica Topolšica
Including hospital Topolšica

Tabela 11. Število in odstotek novih primerov raka, ugotovljenih v bolnišnicah, po stadiju, lokaciji in spolu - Slovenija 1993

Table 11. Number and percentage of new cancer cases reported by hospitals by stage, site and sex - Slovenia 1993

Šifra MKB	L o k a c i j a	Spol	Število primerov	Lokaliziran		S t a d i j				Neznan	
				Število	Odstotek*	Regionarna razširitev	Oddaljena razširitev	Število	Odstotek*	Število	Odstotek*
ICD No.	Site	Sex	Number of cases	Localized Number	Per cent*	Regional Number	Per cent*	Remote Number	Per cent*	Unknown Number	Per cent*
140 209	Vse lokacije All sites	Skupaj Total	6969	2665	38	2013	29	1776	25	515	7
		Moški Male	3548	1213	34	1038	29	995	28	302	9
		Ženske Female	3421	1452	42	975	29	781	23	213	6
140	Ustnica Lip	M Ž	25 5	24 5	96	1 -	4	- -	-	- -	-
141	Jezik Tongue	M Ž	27 9	9 3	33	17 3	63	1 2	4	- 1	-
142	Slinavke Salivary glands	M Ž	4 6	1 2		3 4		- -		- -	
143	Dlesni Gum	M Ž	5 2	2 -		3 1		- 1		- -	
144	Ustno dno Floor of mouth	M Ž	41 4	8 -	20	24 3	59	9 1	22	- -	-
145	Usta, drugo Mouth, other parts	M Ž	26 5	6 3	23	14 2	54	5 -	19	1 -	4
146	Orofarinks Oropharynx	M Ž	105 9	14 -	13	66 7	63	25 1	24	- 1	-
147	Epifarinks Epipharynx	M Ž	7 5	1 1		3 4		3 -		- -	
148	Hipofarinks Hypopharynx	M Ž	50 5	3 -	6	43 5	86	3 -	6	1 -	2
149	Žrelo, neoznačeno Pharynx, not specified	M Ž	- -	- -		- -		- -		- -	
150	Požiralnik Esophagus	M Ž	66 7	17 1	26	29 4	44	11 2	17	9 -	14
151	Želodec Stomach	M Ž	299 196	41 50	14 26	113 56	38 29	92 50	31 26	53 40	18 20
152	Tanko črevo Small intestine	M Ž	8 4	2 2		4 2		1 -		1 -	

cont. ↓

Tabela 11. Nadaljevanje - continued

Šifra MKB	Lokacija	Spol	Število primerov	Lokaliziran		S t a d i j				Neznan	
				Število	Odstotek*	Regionarna razširitev		Oddaljena razširitev		Število	Odstotek*
ICD No.	Site	Sex	Number of cases	Localized		S t a g e				Unknown	
				Number	Per cent*	Regional		Remote		Number	Per cent*
153	Debelo črevo Colon	M	195	26	13	97	50	51	26	21	11
		Ž	202	26	13	113	56	49	24	14	7
154	Rektum Rectum, anus	M	219	38	17	105	48	57	26	19	9
		Ž	191	33	17	88	46	47	25	23	12
155	Jetra Liver	M	36	16	44	4	11	12	33	4	11
		Ž	18	7	39	6	33	4	22	1	6
156	Žolčnik, žolčni vodi Gall bladder, bile ducts	M	39	10	26	11	28	10	26	8	21
		Ž	80	8	10	28	35	34	43	10	13
157	Trebušna slinavka Pancreas	M	73	6	8	13	18	30	41	24	33
		Ž	81	7	9	24	30	27	33	23	28
158	Retro-, peritonej Retro-, peritoneum	M	4	1	-	2	-	1	-	-	-
		Ž	11	1	-	4	-	4	-	2	-
159	Prebavila, drugo Digestive organs, other	M	2	-	-	-	-	2	-	-	-
		Ž	4	-	-	-	-	2	-	2	-
160	Nos, obnosne votl., drugo Nose, sinuses, etc.	M	12	5	-	4	-	3	-	-	-
		Ž	7	3	-	3	-	1	-	-	-
161	Grlo Larynx	M	91	49	54	39	43	3	3	-	-
		Ž	12	10	-	2	-	-	-	-	-
162	Sapnik, sapnica, pljuča Trachea, bronchus, lung	M	799	201	25	292	37	268	34	38	5
		Ž	148	35	24	49	33	52	35	12	8
163	Plevra, mediastin., drugo Pleura, mediastinum, etc.	M	12	8	-	2	-	-	-	2	-
		Ž	2	-	-	1	-	-	-	1	-
170	Kosti Bone	M	5	-	-	5	-	-	-	-	-
		Ž	10	5	-	4	-	1	-	-	-
171	Mehka tkiva Soft tissues	M	10	6	-	3	-	-	-	1	-
		Ž	12	11	-	1	-	-	-	-	-
172	Koža, maligni melanom Skin, malignant melanoma	M	68	53	78	9	13	3	4	3	4
		Ž	82	64	78	11	13	4	5	3	4
173	Koža, drugi malignomi Skin, other malignancies	M	342	327	96	11	3	1	-	3	1
		Ž	412	403	98	6	1	1	-	2	-
174	Dojka Breast	M	8	2	-	5	-	1	-	-	-
		Ž	725	282	39	360	50	71	10	12	2
180	Maternica, vrat Uterus, cervix	Ž	156	82	53	39	25	33	21	2	1
181	Horioepiteliom Chorioepithelioma	Ž	1	-	-	-	-	-	-	1	-

cont. ↓

Tabela 11. Nadaljevanje - continued

Šifra MKB	L o k a c i j a	Spol	Število primerov	Lokaliziran		S t a d i j				Neznan	
				Število	Odstotek*	Regionarna razširitev		Oddaljena razširitev		Število	Odstotek*
ICD No.	Site	Sex	Number of cases	Localized		S t a g e				Unknown	
				Number	Per cent*	Regional		Remote		Number	Per cent*
182	Maternica, telo, drugo Uterus, corpus, etc.	Ž	245	181	74	34	14	22	9	8	3
183	Jajčnik, jajcevod, drugo Ovary, Fallopian tube, etc.	Ž	158	41	26	14	9	97	61	6	4
184	Nožnica, vulva, drugo Vagina, vulva, etc.	Ž	44	21	48	17	39	6	14	-	-
185	Prostata Prostate	M	246	120	49	22	9	55	22	49	20
186	Modo Testis	M	59	20	34	29	49	8	14	2	3
187	Penis, obmodek, drugo Penis, epididymis, etc.	M	4	2		1		-		1	
188	Mehur Bladder	M	123	58	47	26	21	12	10	27	22
		Ž	44	25	57	8	18	4	9	7	16
189	Ledvica, sečevod, drugo Kidney, ureter, etc.	M	98	57	58	13	13	23	23	5	5
		Ž	91	46	51	22	24	14	15	9	10
190	Oko Eye	M	9	9		-		-		-	
		Ž	9	8		1		-		-	
191	Možgani Brain	M	54	54	100	-	-	-	-	-	-
		Ž	41	38	93	2	5	1	2	-	-
192	Živčevje, drugo Nervous system, other	M	4	2		2		-		-	
		Ž	12	6		2		4		-	
193	Ščitnica Thyroid	M	13	4		8		1		-	
		Ž	59	30	51	22	37	5	8	2	3
194	Endokrine žleze, druge Endocrine glands, other	M	2	1		-		-		1	
		Ž	6	2		1		2		1	
195	Slabo opredeljena lokaliz. Ill-defined site	M	7	-		4		-		3	
		Ž	25	-	-	10	40	10	40	5	20
196	Metastaze v bezgavkah Lymph node metastases	M	11	-		-		1		10	
		Ž	12	-		-		-		12	
197	Met. v dihalih, prebavilih Respiratory, digestive tract met.	M	59	-	-	-	-	58	98	1	2
		Ž	54	-	-	-	-	53	98	1	2
198	Metastaze, druge Metastases, other	M	32	-	-	-	-	32	100	-	-
		Ž	13	-	-	-	-	13		-	-
199	Malignomi, neopredeljeni Malignancies, unspecified	M	60	-	-	-	-	60	100	-	-
		Ž	36	-	-	-	-	36	100	-	-

cont. ↓

Tabela 11. Nadaljevanje - continued

Šifra MKB	Lokacija	Spol	Število primerov	S t a d i j (A n n - A r b o r)							
				I		II		III + IV		Neznan	
ICD No.	Site	Sex	Number of cases	Število	Odstotek*	Število	Odstotek*	Število	Odstotek*	Število	Odstotek*
				Number	Per cent*	Number	Per cent*	Number	Per cent*	Number	Per cent*
200	Ne-Hodgkinovi limfomi	M	58	7	12	9	16	33	57	9	16
+202	Non-Hodgkin's limfomas	Ž	47	8	17	3	6	27	57	9	19
201	Hodgkinov limfom	M	21	3	14	3	14	15	71	-	-
	Hodgkin's disease	Ž	20	2	10	9	45	7	35	2	10

* Odstotki niso računani pri številih pod 15

* Percentages are not calculated for less than 15 cases