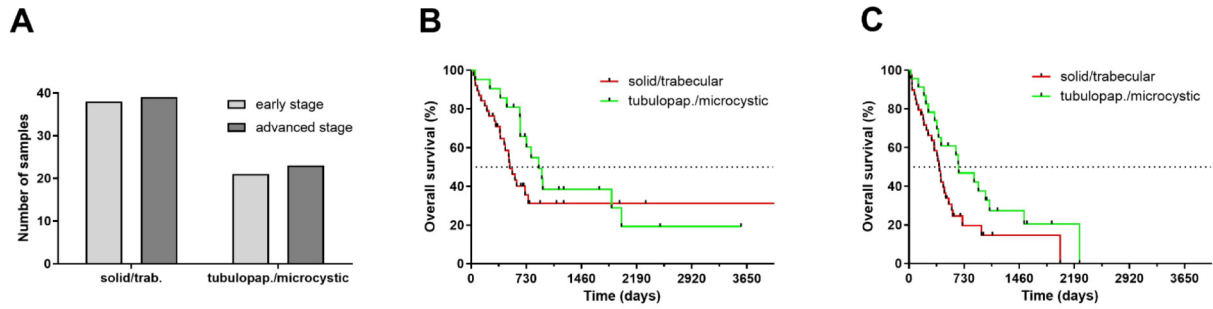


Supplementary Figure 1



Suppl. Figure 1.: (A) Distribution of histologic variants among early and advanced disease stage patients. ($p=0.999$, Fisher's exact test). (B) OS of tubulopapillary/microcystic and solid/trabecular histologic subtypes in the early stage subgroup of patients (median OS: 897 days, HR=Ref. vs. median OS: 510 days, HR=1.55, 95% CI [0.80-2.98], $p=0.194$ by Mantel-Cox test; $p=0.041$ by Gehan-Breslow-Wilcoxon test) C) OS of tubulopapillary/microcystic and solid/trabecular histologic subtypes in the advanced stage subgroup of patients (median OS: 660 days, HR=Ref. vs. median OS: 401 days, HR=1.75, 95% CI [1.00-3.06], $p=0.047$, Mantel-Cox test).