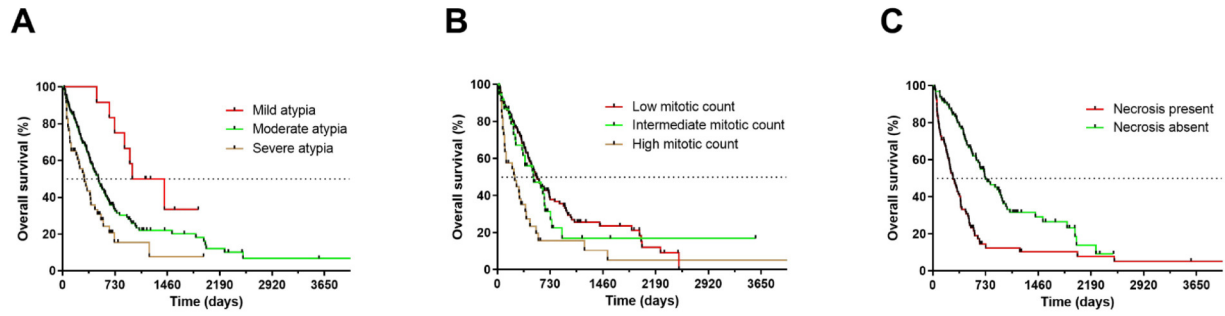


Supplementary Figure 2



Suppl. Figure 2.: (A) OS of tumors exhibiting mild (HR=Ref.), moderate (HR=2.29, 95% CI [1.32-3.97], $p=0.027$) and severe nuclear atypia (HR=3.47, 95% CI [1.88-6.42], $p<0.001$). (B) OS and mitotic counts. Low (HR=Ref.) and intermediate (HR=1.17, 95% CI [0.75-1.87], $p=0.470$) numbers of mitotic figures are associated with a significantly better OS in comparison to high mitotic counts (HR=2.48, 95% CI [1.45-4.25], $p<0.001$) (C) The presence of necrosis is associated with significantly shorter OS (HR=2.38, 95% CI [1.68-3.38], $p<0.0001$)